

**2769 Guelph St,  
Vancouver, B.C.**

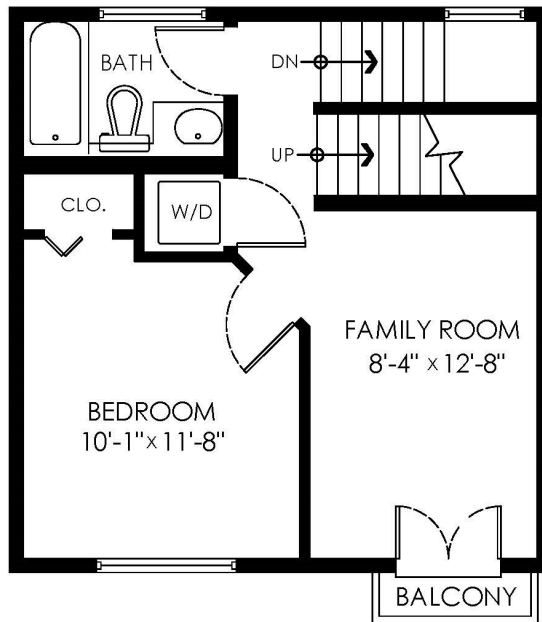
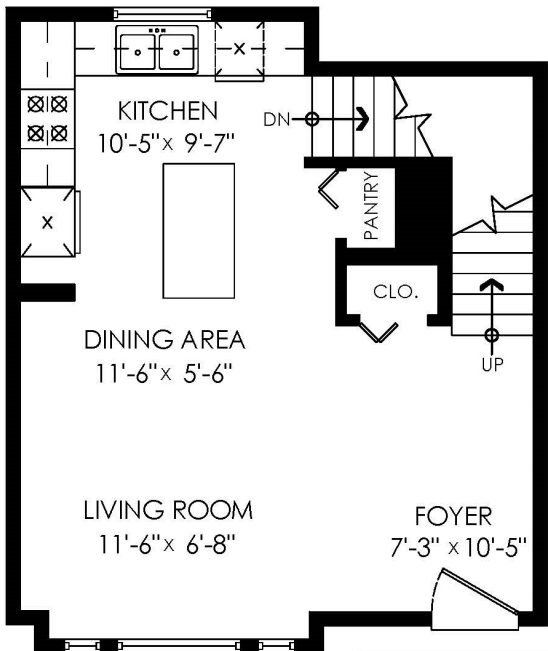
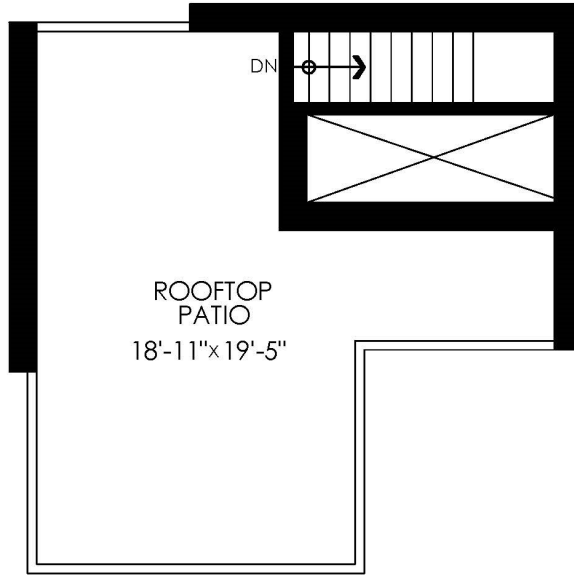
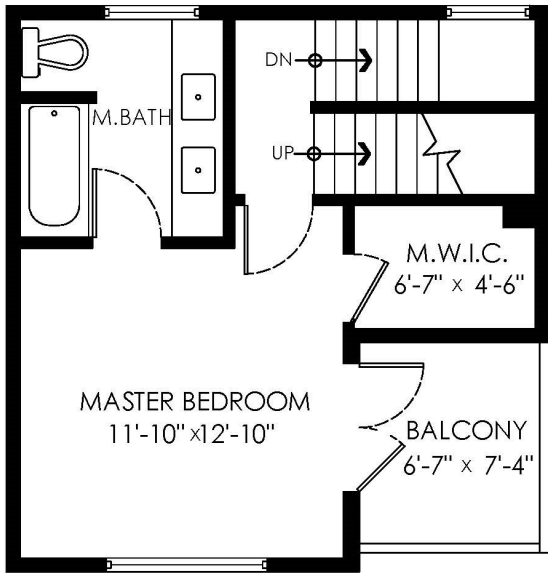
Main Floor:	439 sq.ft
Upper Floor:	407 sq.ft
Top Floor:	351 sq.ft
Lower Floor:	155 sq.ft
<b>Total:</b>	<b>1,352 sq.ft</b>

Rooftop Patio:	341 sq.ft
Balconies:	65 sq.ft

Top Floor Plan

Floor Area: 351 sq.ft.

Ceiling Height: 7'-11"



Upper Floor Plan

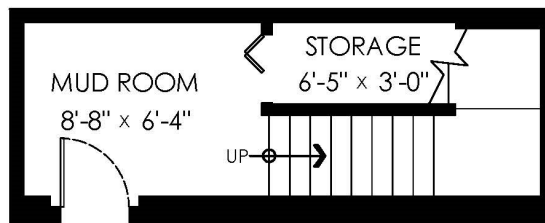
Floor Area: 407 sq.ft

Ceiling Height: 7'-11"

Main Floor Plan

Floor Area: 439 sq.ft.

Ceiling Height: 9'



TO PARKADE

Lower Floor Plan

Floor Area: 155 sq.ft.

Ceiling Height: 8'-6"



www.DraftQnSite.com  
(604) 876-3738  
Floor Plan Measuring, Drafting & Design  
E&O Insured for \$1,000,000

**Pixilink**  
SOLUTIONS  
604-639-5434  
WWW.PIXILINK.COM

Total sq.ft. is calculated using BOMA Standard Method A