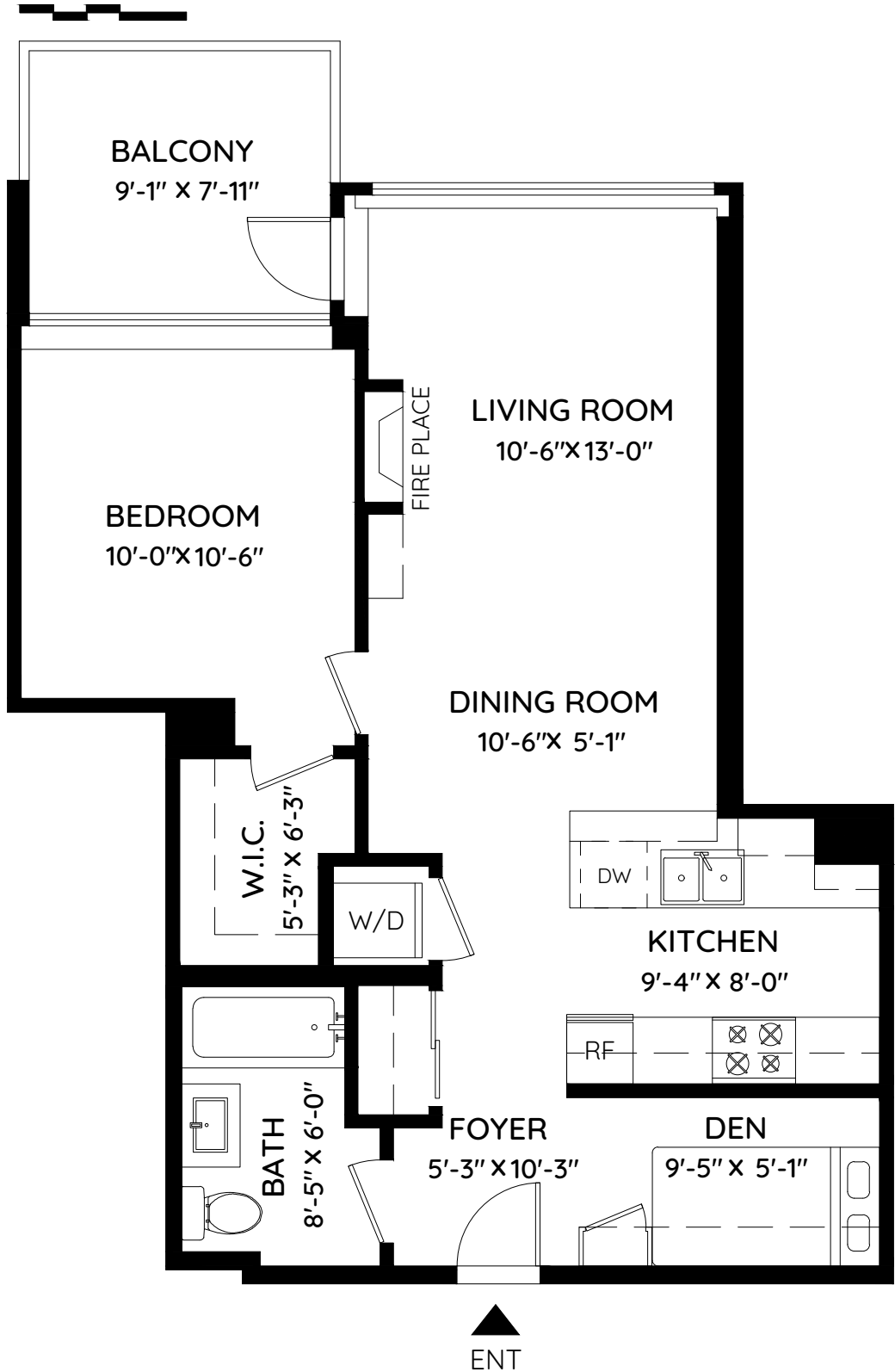


0 ft 3 ft 5 ft



TOTAL AREA	678 SQ.FT.
BALCONY	79 SQ.FT.
CEILING HEIGHTS	8'-0"

MAIN FLOOR
 678 SQ.FT.
 CH: 8'-4"



Total sq.ft. is calculated using method ANSI - Z765
 The floor plan and the measurements are approximate and are to be used for advertising usage only.
 Not suitable for architectural or construction E&OE. © 2019 KEYPLAN Measuring Inc.

