

Kyle Cupido

REAL ESTATE **Sotheby's** | Canada
INTERNATIONAL REALTY

778.378.9779 kcupido@sothebysrealty.ca
www.kylecupido.com

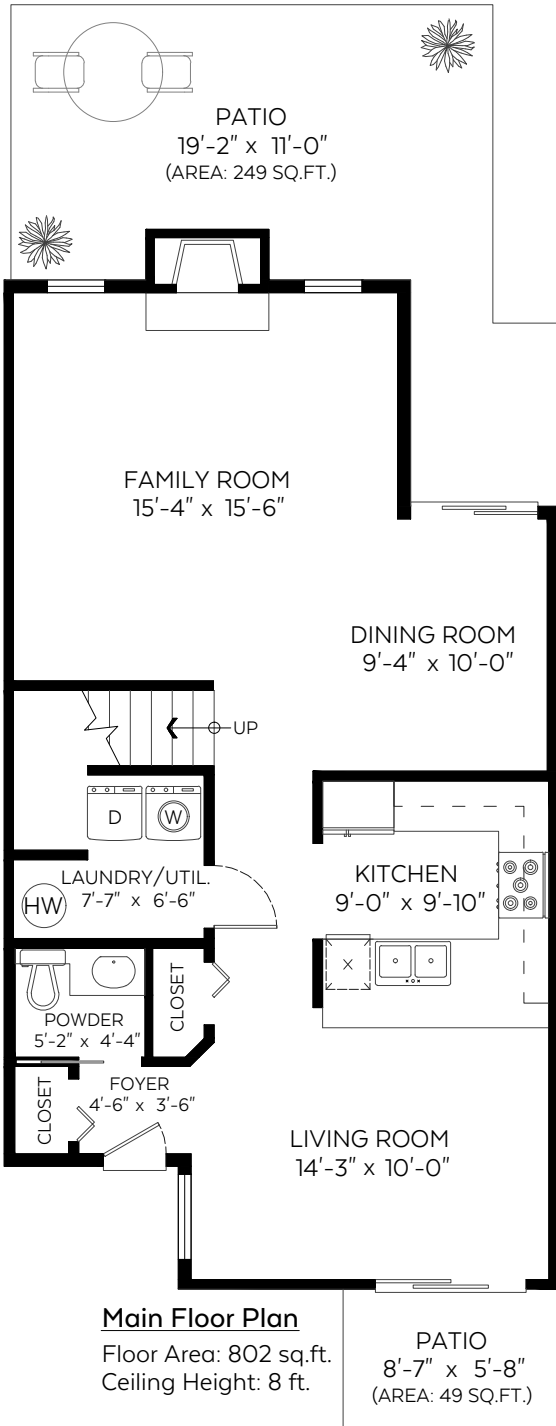
2912 Mount Seymour Parkway,
North Vancouver, B.C.

Main Floor: 802 sq.ft.
Upper Floor: 802 sq.ft.

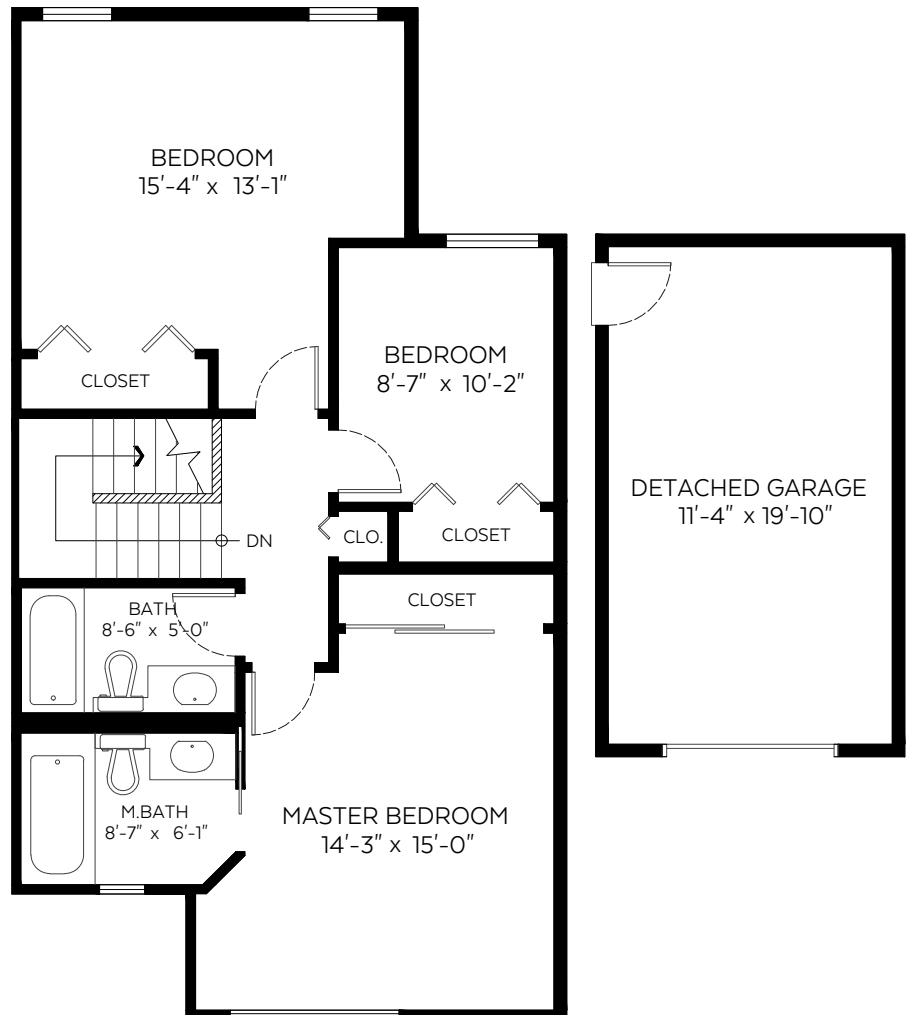
Total: 1,604 sq.ft.

Auxiliary Area

Garage: 256 sq.ft.
Patios: 298 sq.ft.



SCALE
0' 5'



Valid Until: March 15, 2022

The floor plan is not suitable for architectural/construction and is covered under E&O. © Excelsior Measuring Inc. 2019. All rights reserved for Excelsior Measuring Inc. Users shall not publish and distribute such material (in whole or in part) and/or incorporate it in other works in any form.

