

# Kyle Cupido

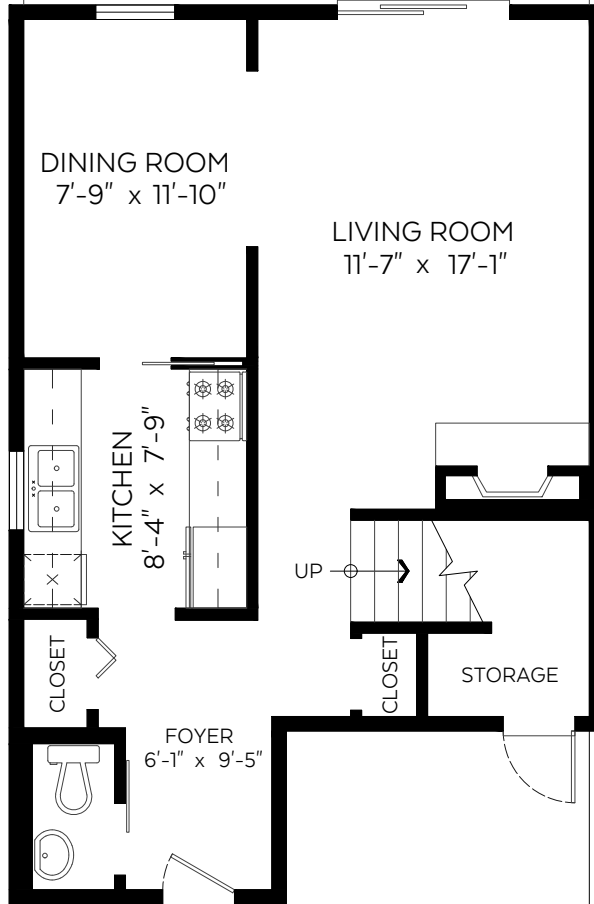
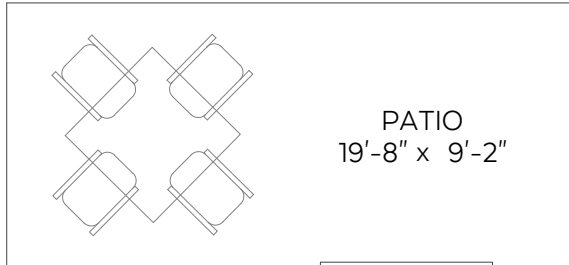
REAL ESTATE **Sotheby's** | Canada  
INTERNATIONAL REALTY  
 778.378.9779 kcupido@sothebysrealty.ca  
 www.kylecupido.com

#25-1500 Judd Road,  
 Squamish, B.C.

Main Floor: 580 sq.ft.  
 Upper Floor: 647 sq.ft.  
**Total: 1,227 sq.ft.**

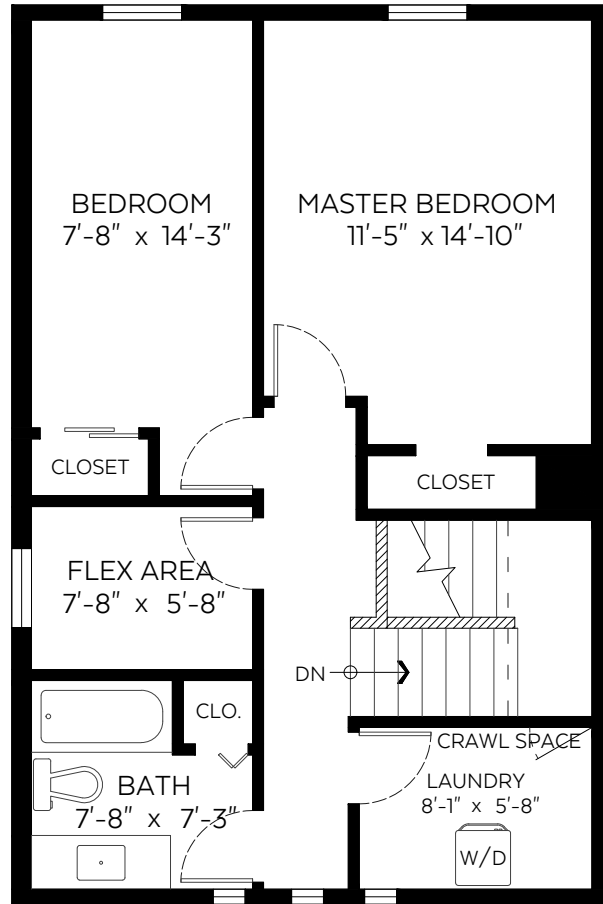
### Auxiliary Area

Carport: 211 sq.ft.  
 Patio: 181 sq.ft.



### Main Floor Plan

Floor Area: 580 sq.ft.  
 Ceiling Height: 8 ft.



### Upper Floor Plan

Floor Area: 647 sq.ft.  
 Ceiling Height: 8 ft.



Valid Until: October 02, 2022

The floor plan is not suitable for architectural/construction and is covered under E&O. © Excelsior Measuring Inc. 2021. All rights reserved for Excelsior Measuring Inc. Users shall not publish and distribute such material (in whole or in part) and/or incorporate it in other works in any form.

