

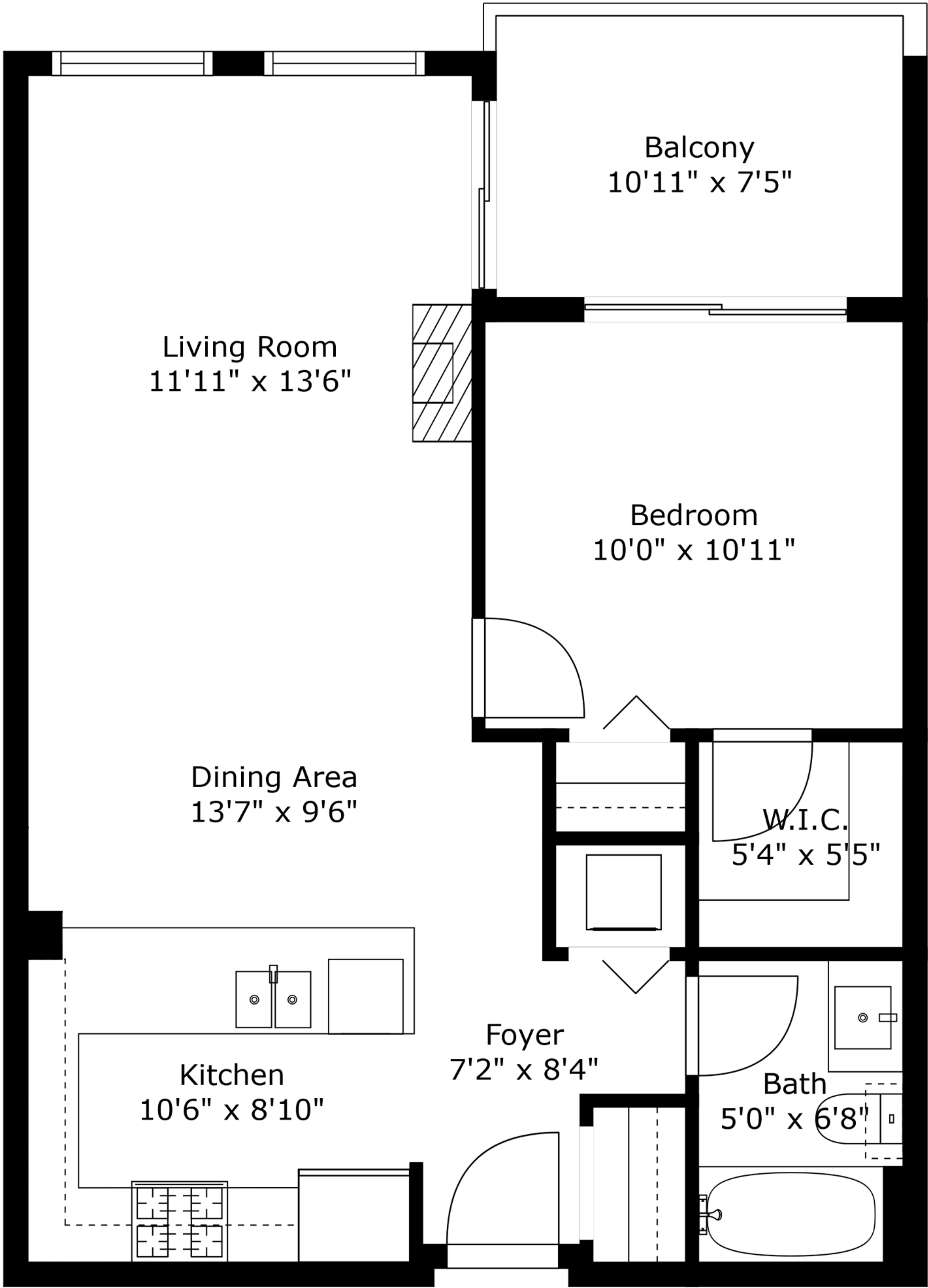
#411- 201 Morrissey Rd, Port Moody, BC

1 Bed 1 Bath

Main Level - 718 Sq.Ft

Total - 718 Sq.Ft

Balcony - 80 Sq.Ft



Main Level - 718 Sq.Ft

Ceiling Height- 9'0" - 15'5"

**Lance Phillips**  
604.924.8282  
Lance@PhillipsandPrem.com  
phillipsandprem.ca

**Nik Prem**  
604.992.9451  
Nik@PhillipsandPrem.com  
phillipsandprem.ca

Floor plan measurements, dimensions, square footage, existing structures & features are approximations and are for illustrative purposes only. We make no guarantee, warranty, or representation, expressed or implied, as to the accuracy and completeness of this illustration. Independent verification is recommended

**Phillips & Prem**  
REAL ESTATE GROUP