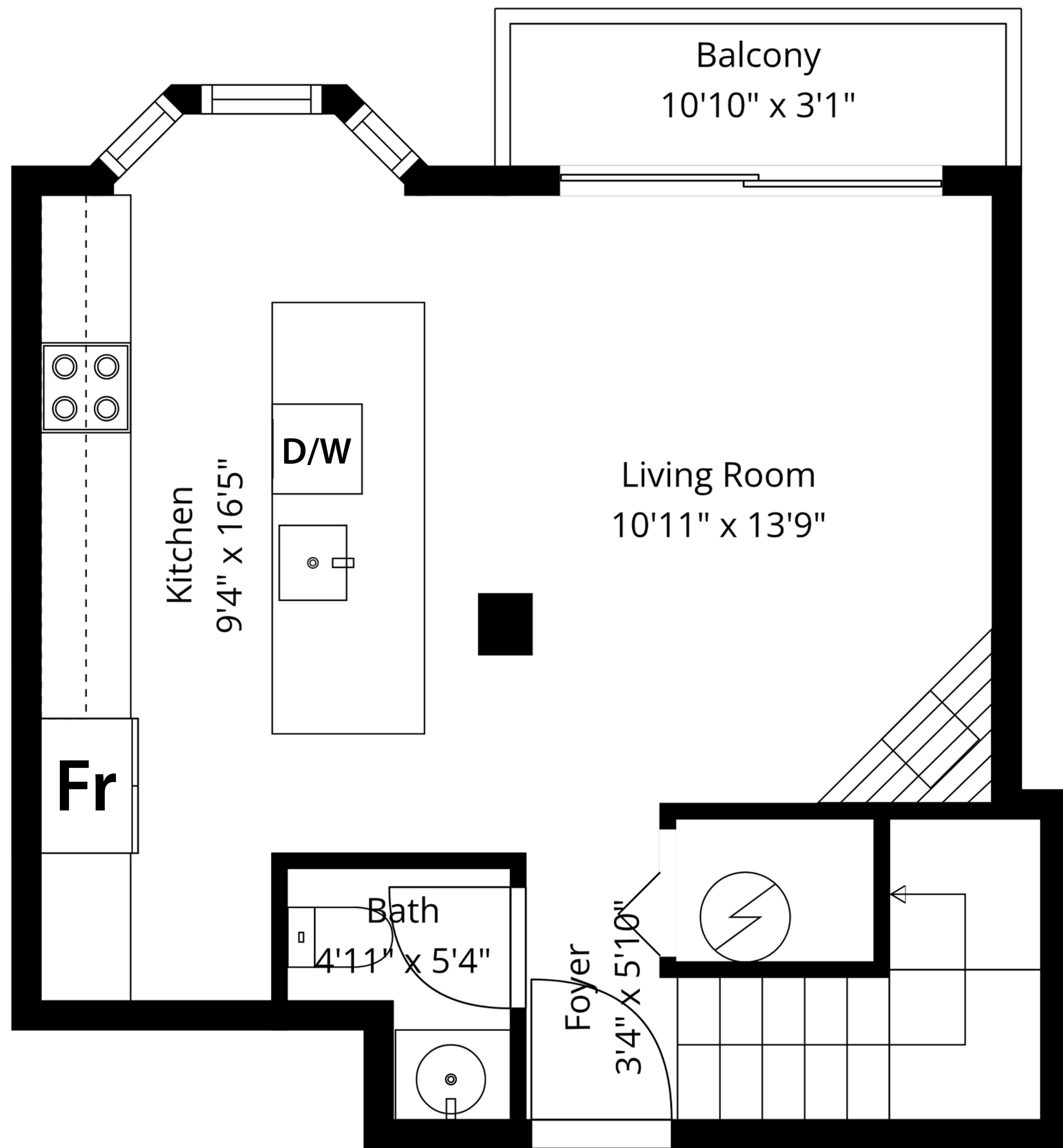


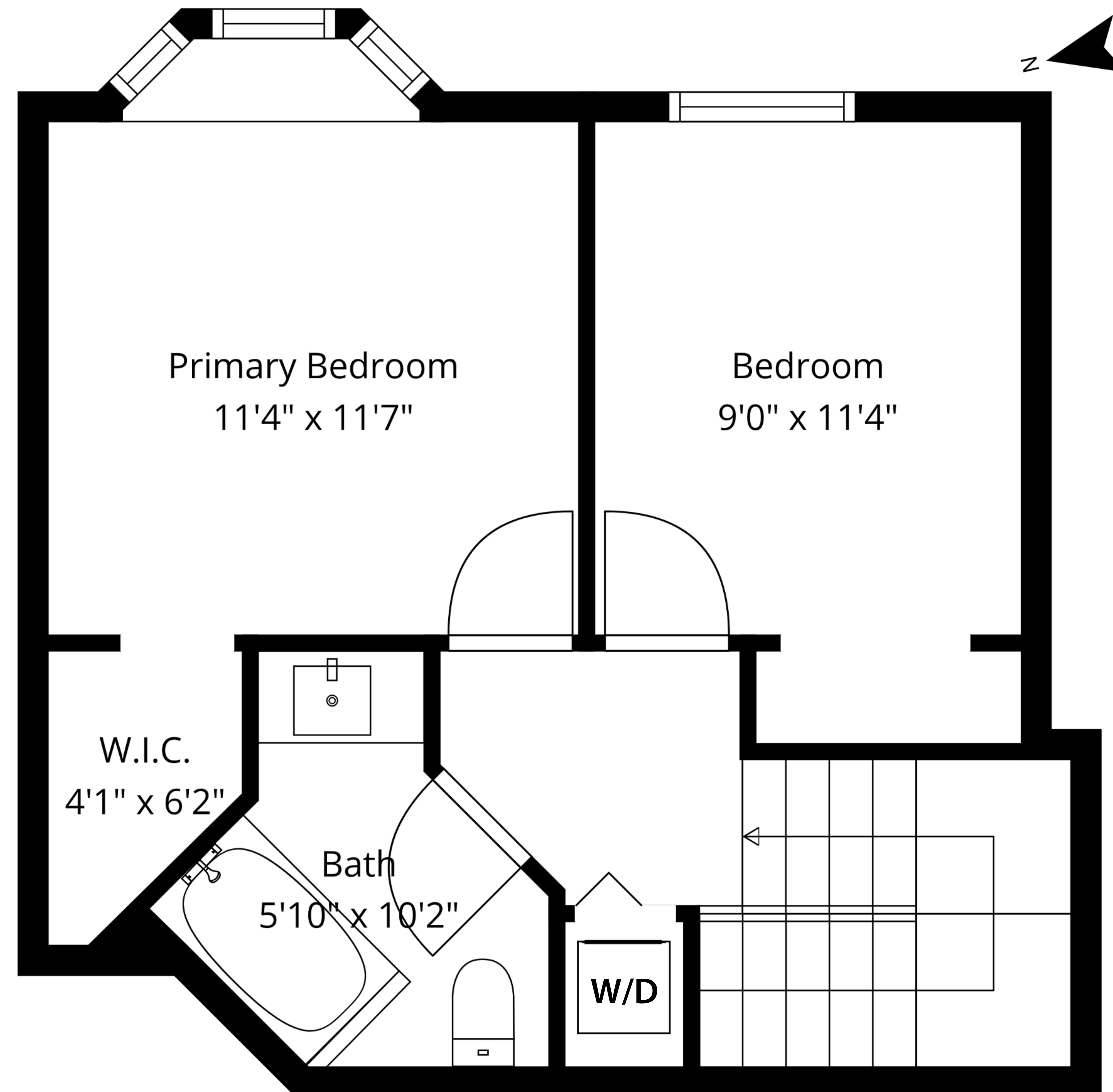
#202-1106 W 11th Ave, Vancouver, BC

2 Bed 2 Bath

Main Level - 469 Sq.Ft
Upper Level - 465 Sq.Ft
Total - 934 Sq.Ft
Balcony - 34 Sq.Ft



Main Level - 469 Sq.Ft
Ceiling Height - 7'10"



Upper Level - 465 Sq.Ft
Ceiling Height - 8'0"

Lance Phillips
604.924.8282
Lance@PhillipsandPrem.com
phillipsandprem.ca

Nik Prem
604.992.9451
Nik@PhillipsandPrem.com
phillipsandprem.ca

Floor plan measurements, dimensions, square footage, existing structures & features are approximations and are for illustrative purposes only. We make no guarantee, warranty, or representation, expressed or implied, as to the accuracy and completeness of this illustration. Independent verification is recommended

Phillips & Prem
REAL ESTATE GROUP