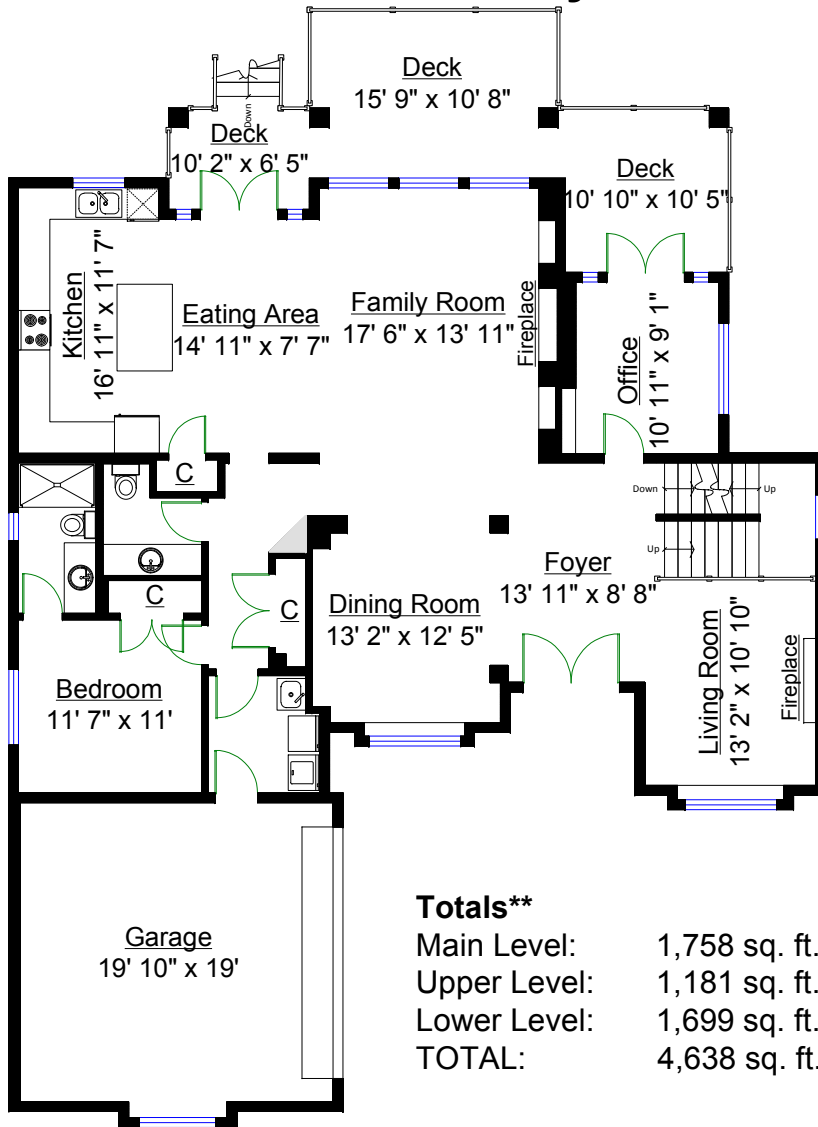


# 683 Sylvan Avenue, North Vancouver



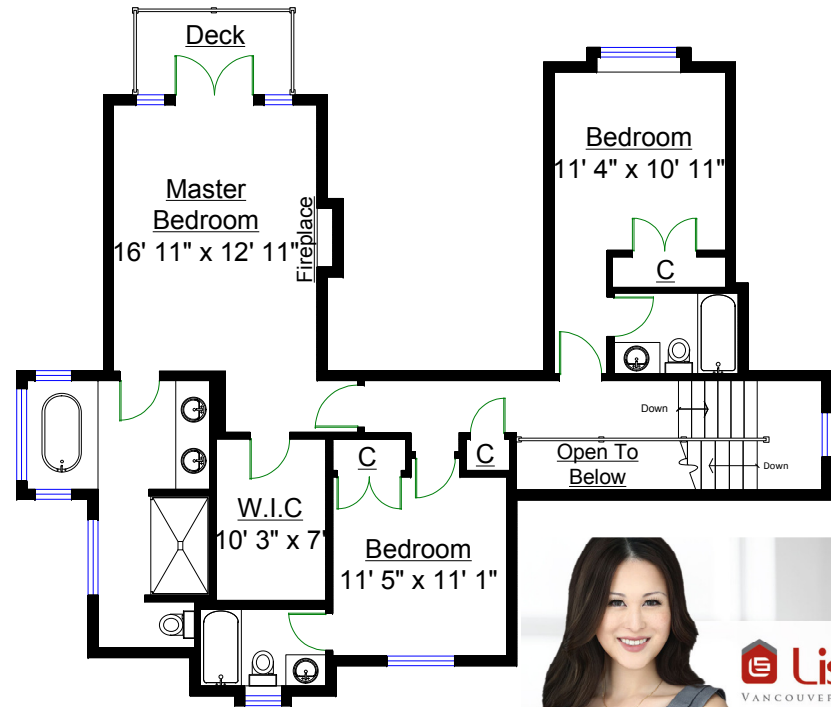
**MAIN LEVEL**

**Totals\*\***

Main Level:	1,758 sq. ft.
Upper Level:	1,181 sq. ft.
Lower Level:	1,699 sq. ft.
<b>TOTAL:</b>	<b>4,638 sq. ft.</b>

**Other Areas**

Garage:	424 sq. ft.
Deck:	350 sq. ft.
Master Deck:	54 sq. ft.
<b>TOTAL:</b>	<b>828 sq. ft.</b>

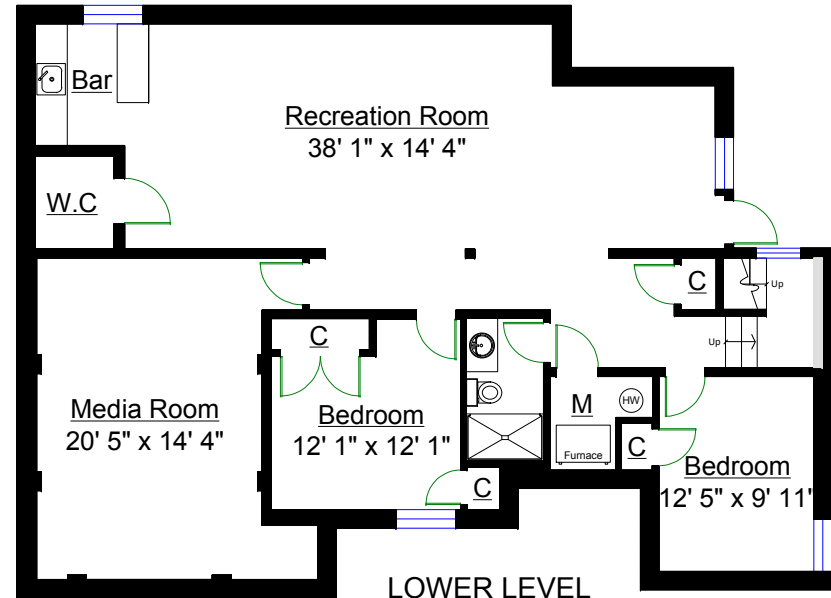


**UPPER LEVEL**



**Lisa Sun**  
VANCOUVER LUXURY HOMES

RE/MAX  
WWW.LISASUN.CA



**LOWER LEVEL**