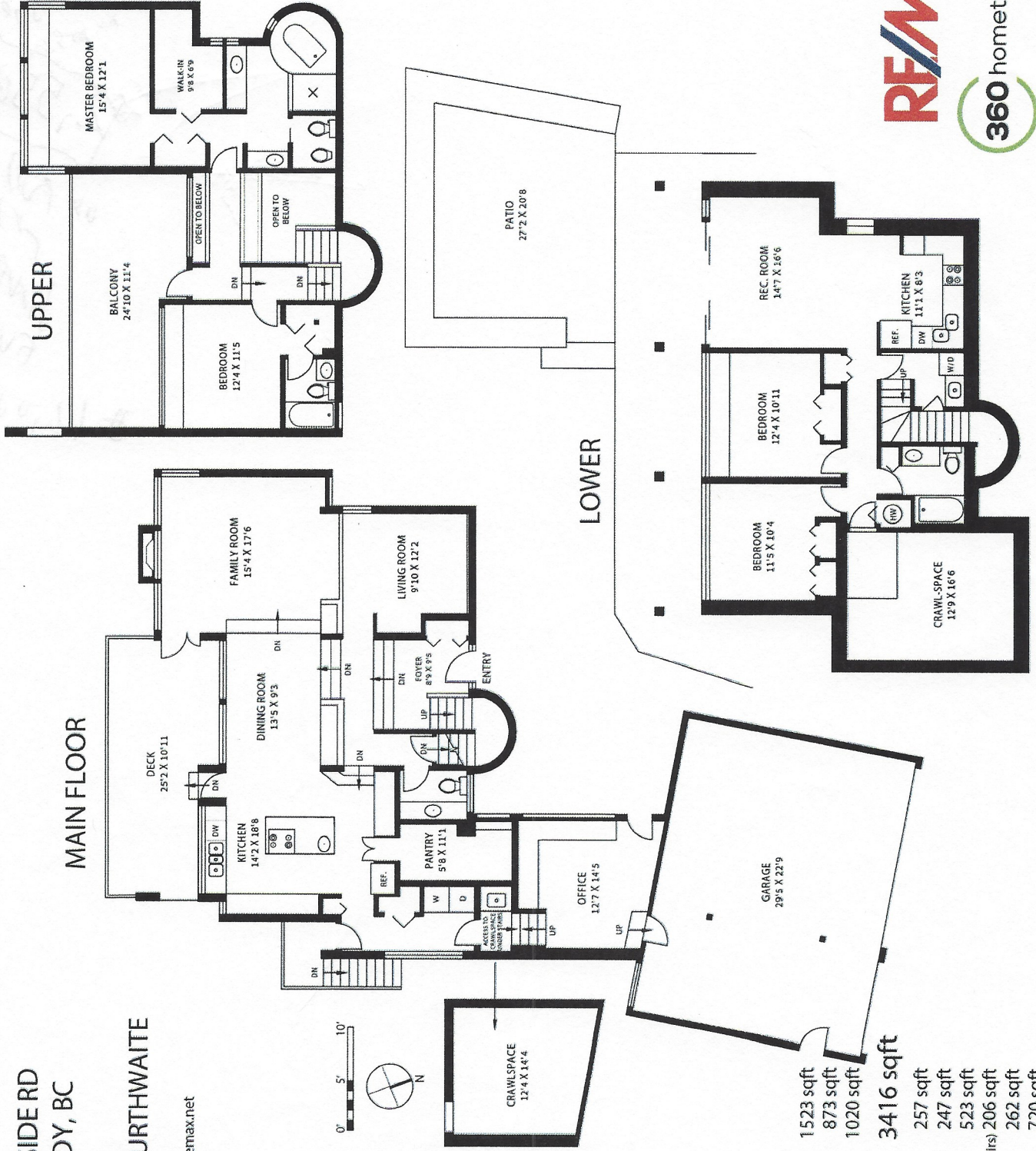


726 ALDERSIDE RD
PORT MOODY, BC

PRESENTED BY:

DARREN SMURTHWAITE

604-328-2040
darrensmurthwaite@remax.net



MAIN	1523 sqft
UPPER	873 sqft
LOWER	1020 sqft
TOTAL AREA	3416 sqft
DECK	257 sqft
BALCONY	247 sqft
PATIO	523 sqft
CRAWL SPACE (under stairs)	206 sqft
CRAWL SPACE	262 sqft
GARAGE	720 sqft

RE/MAX

360 hometours.ca
since 2006

THIS FLOORPLAN IS FOR ILLUSTRATION PURPOSES ONLY AND ALL DIMENSIONS SHOULD BE CONSIDERED APPROXIMATE