

225 - 13963 105 BLVD

SURREY, BC



Welcome to HQ Dwell by Porte Homes! This rare & sought after southeast corner unit offers one of the best locations in the building, just steps from the elevator and entrance. Featuring 2 beds, 2 baths & over 1,000 sqft of living space, the home boasts a modern kitchen w/ quartz countertops, SS appliances, ample cabinetry, laminate flooring throughout. The spacious primary bedroom includes a walk-in closet, additional closet, a double vanity ensuite. Comes w/ 2 tandem parking spaces & a large storage locker. Enjoy top-tier amenities: 2-level gym, yoga room, party room, billiards, table tennis, courtyard, BBQ area, EV charging & ample visitor parking. Ideally located near schools, parks, Surrey Central & King George SkyTrain, SFU, future UBC campus, Central City shopping & Holland Park.



Condo (Corner Unit)



Built 2020



2 Bedrooms



2 Bathrooms



1009 SF



2 Tandem Parking



1 Storage Locker



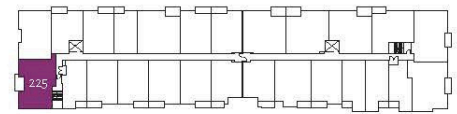
MARLON PRADANA PERSONAL REAL ESTATE CORPORATION

OAKWYN REALTY LTD | 3195 OAK ST. VANCOUVER BC V6H 2L2

OFFICE (604) 620-6788 | CELL (604) 782-5560 | MARLONPRADANA@GMAIL.COM







LEVEL 2