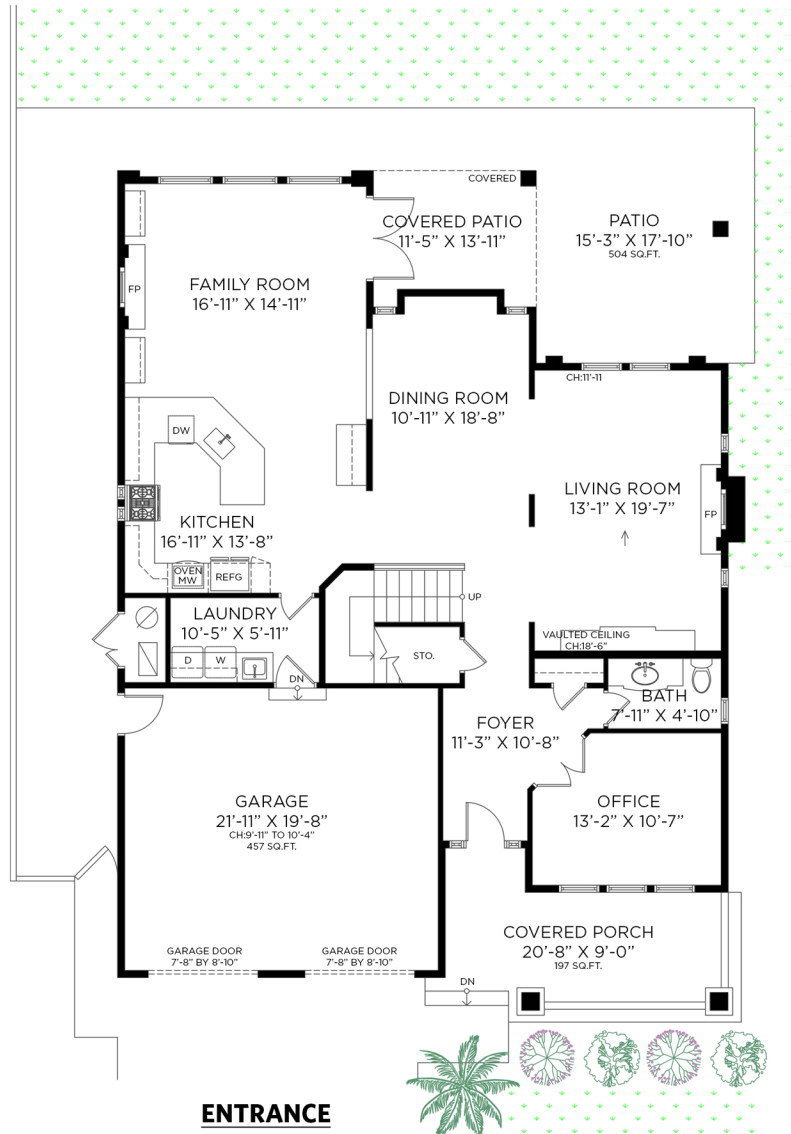


5324 SPETIFORE CRESCENT DELTA, BC

4 BEDROOMS + OFFICE + 3 1/2 BATHROOMS

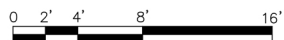
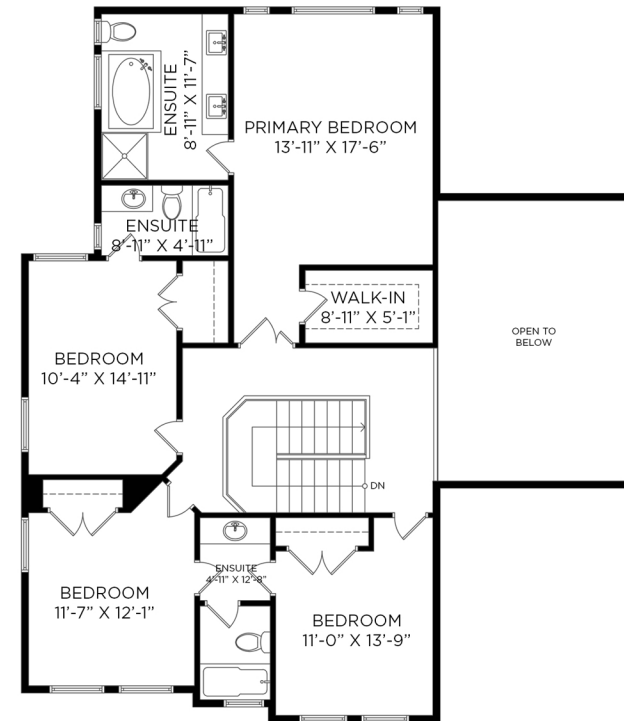
MAIN FLOOR - 1,526 SQ.FT.
CEILING HEIGHT: 8'-11" TO 18'-6"



MAIN FLOOR: 1,526 SQ.FT.
UPPER FLOOR: 1,341 SQ.FT.
TOTAL INTERIOR: 2,867 SQ.FT.

ATTACHED GARAGE: 457 SQ.FT.
EXTERIOR LIVING: 701 SQ.FT.

UPPER FLOOR - 1,341 SQ.FT.
CEILING HEIGHT: 9'-0"



Floor plan not suitable for architectural/construction purposes. ANSI Z765 standards used to calculate square footage. Buyer to verify. E&O insured for \$1,000,000.