

MONET TYLER

604.931.4307

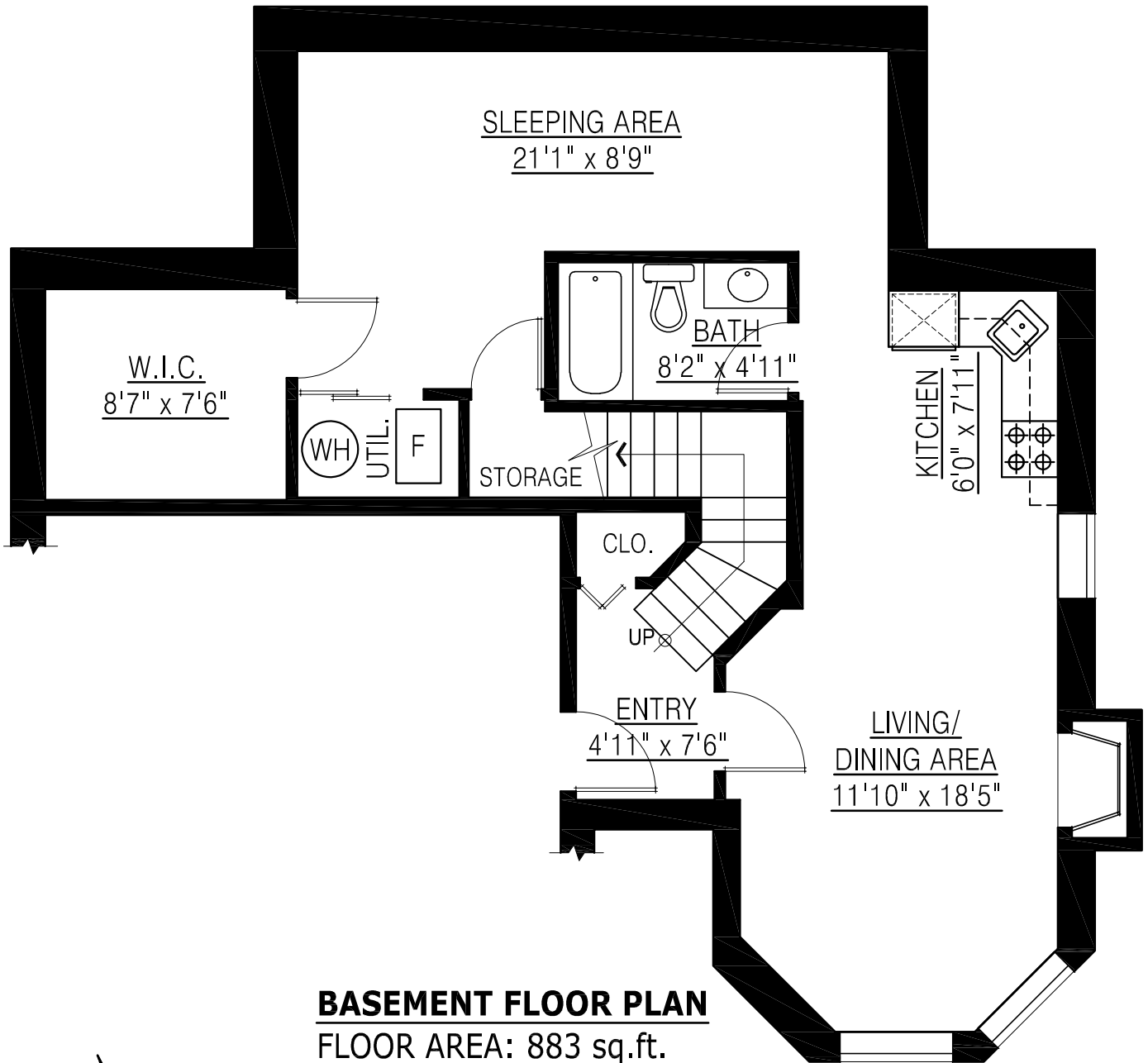
Royal LePage West R.E.S.

www.monettyler.com

monet@monettyler.com

**202 Ravine Dr.
Port Moody, BC**

Basement Floor:	883 sq. ft.
Main Floor:	1,151 sq. ft.
Upper Floor:	884 sq. ft.
Total:	2,918 sq. ft.



BASEMENT FLOOR PLAN
FLOOR AREA: 883 sq.ft.

