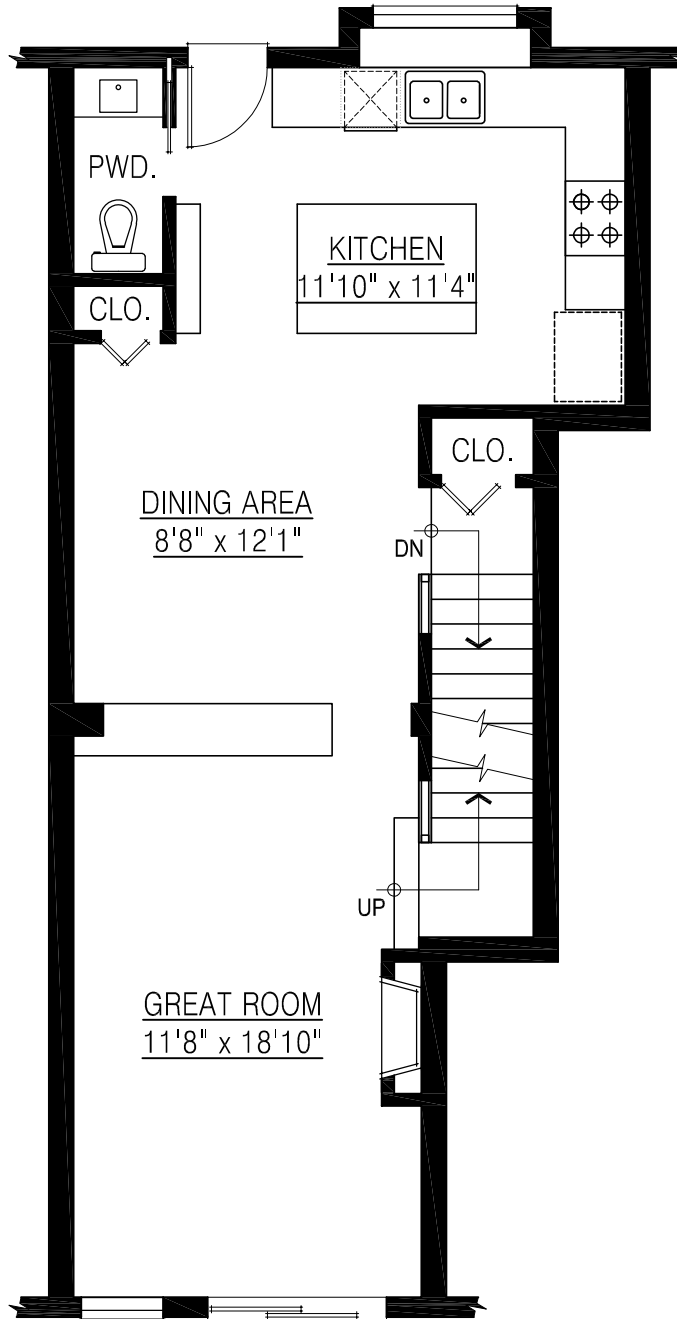


**#89 - 55 Hawthorn Dr.
Port Moody, BC**

Lower Floor: 308 sq. ft.
Main Floor: 684 sq. ft.
Upper Floor: 655 sq. ft.
Total: 1,647 sq. ft.

Garage: 355 sq. ft.



MAIN FLOOR PLAN
FLOOR AREA: 684 sq.ft.

MONET TYLER

604.931.4307

Royal LePage West R.E.S.

www.monettyler.com

monet@monettyler.com

