

# 1596 Salal Crescent

Coquitlam BC V3E 2Y3

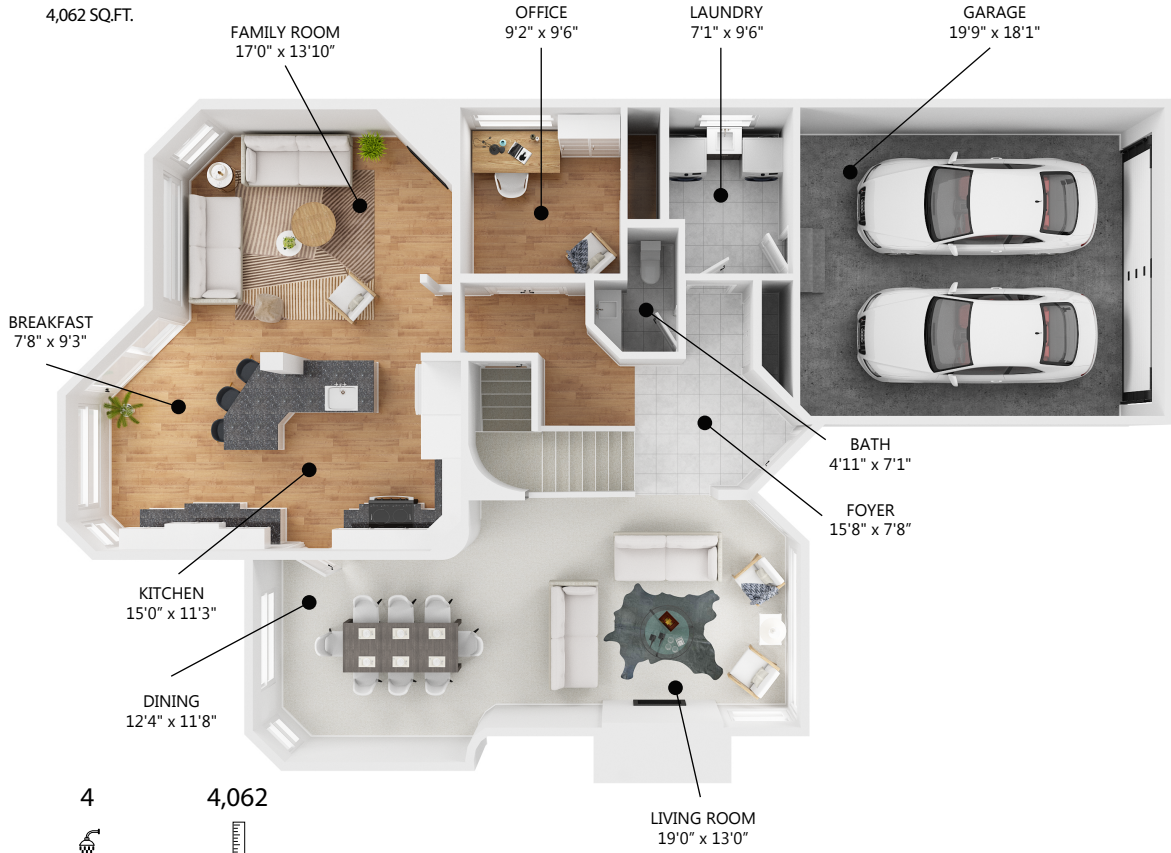
Lower Level: 1,301 SQ.FT.  
Main Level: 1,408 SQ.FT.  
Upper Level: 1,353 SQ.FT.

Total Area 4,062 SQ.FT.

MONET TYLER



Main Level: 1,408 SQ.FT  
Ceiling Height: 8'0"-16'9"



6 BEDROOMS

4 BATHROOMS

4,062 TOTAL SQ.FT.

## 1596 Salal Cres, Coquitlam BC V3E 2Y3

The floor plan illustration is not suitable for construction/architectural purposes. Measurements are approximate and may not be to scale. This communication is not intended to cause or induce breach of an existing agency agreement

**3D IMMERSIVE**  
Tours Photos Floor Plans

Professionally measured by: 3D Immersive Marketing Ltd.

Lead Floor Planner: *Sara Alexander*  
Quality Assurance: *Jessie Graham*