

1596 Salal Crescent

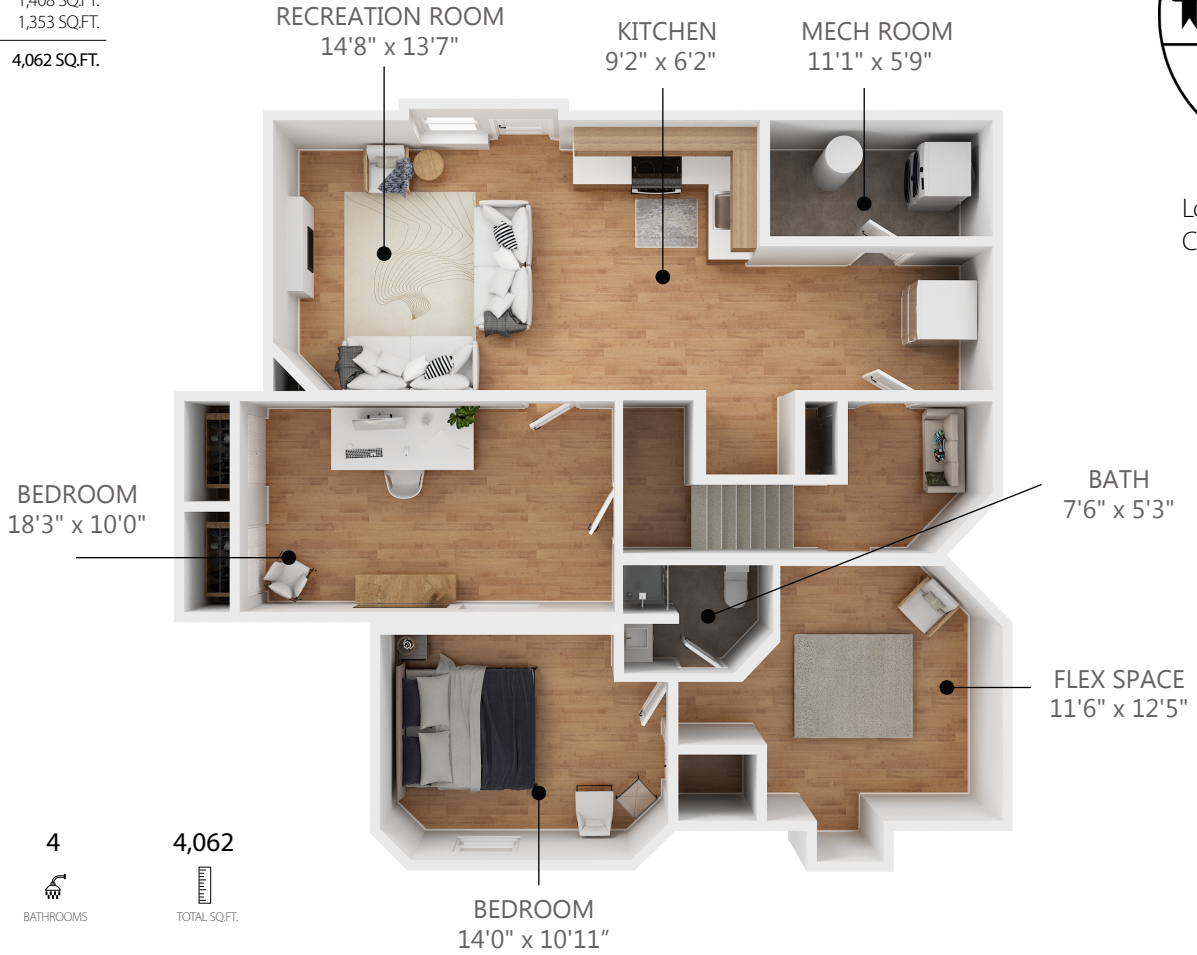
Coquitlam BC V3E 2Y3

Lower Level:	1,301 SQ.FT.
Main Level:	1,408 SQ.FT.
Upper Level:	1,353 SQ.FT.
Total Area	4,062 SQ.FT.

MONET TYLER



Lower Level: 1,301 SQ.FT
Ceiling Height: 8'0"



6 BEDROOMS

4 BATHROOMS

4,062 TOTAL SQ.FT.

1596 Salal Cres, Coquitlam BC V3E 2Y3

The floor plan illustration is not suitable for construction/architectural purposes. Measurements are approximate and may not be to scale. This communication is not intended to cause or induce breach of an existing agency agreement

3D IMMERSIVE
Tours Photos Floor Plans
Professionally measured by: 3D Immersive Marketing Ltd.
Lead Floor Planner: *Sara Alexander*
Quality Assurance: *Janice Graham*