

**#43 – 15 Forest Park Way,  
Port Moody, B.C.**

**Totals\*\***

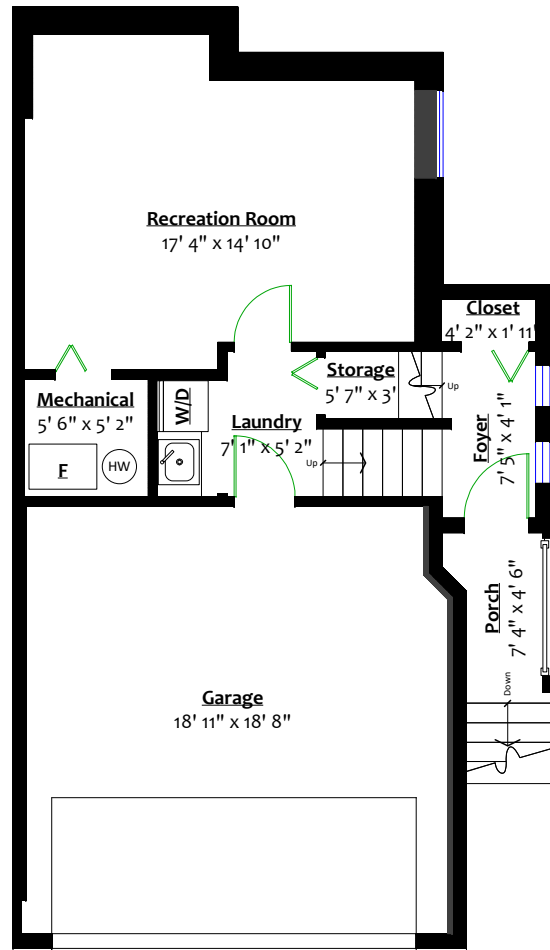
Main Level:	691 sq. ft.	Porch:	28 sq. ft.
Upper Level:	702 sq. ft.	Garage:	387 sq. ft.
Lower Level:	454 sq. ft.	Front Deck:	110 sq. ft.
Total:	1,847 sq. ft.	Back Deck:	325 sq. ft.
		Total:	850 sq. ft.



**Monet Tyler**

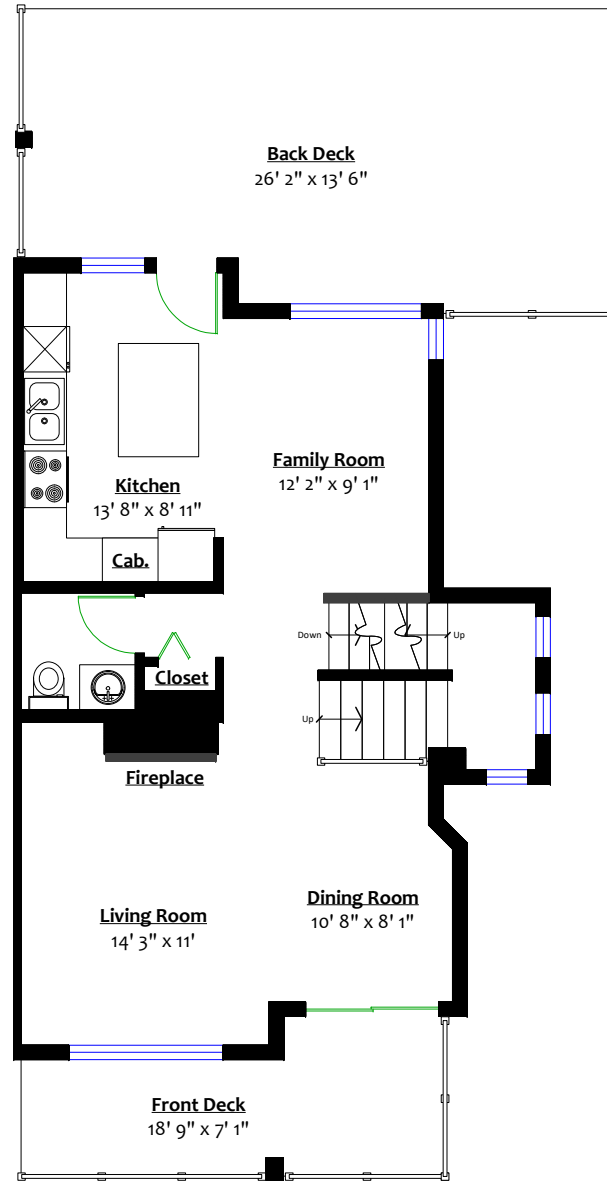
604.763.4307

monet@monettyler.com



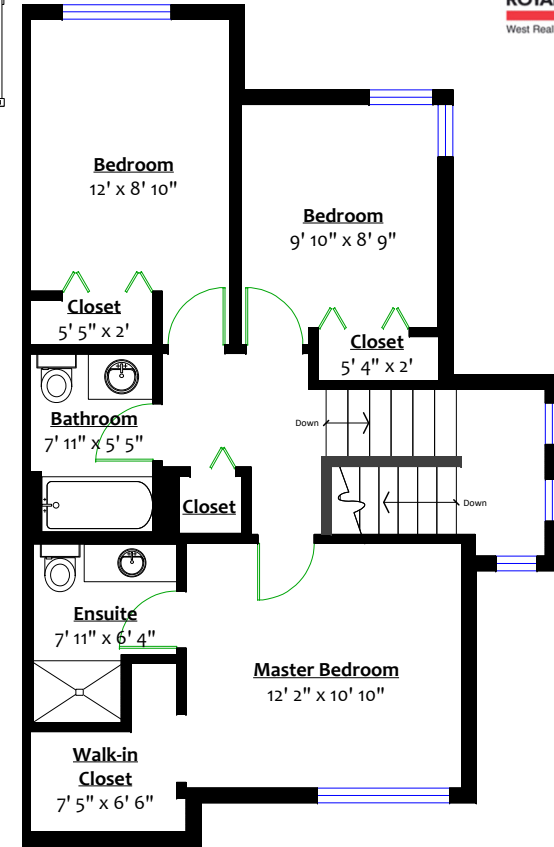
**LOWER LEVEL**

Floor Area: 454 Sq. Ft.  
Ceiling Height: 8' 7"



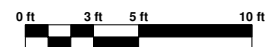
**MAIN LEVEL**

Floor Area: 691 Sq. Ft.  
Ceiling Height: 8' 11"



**UPPER LEVEL**

Floor Area: 702 Sq. Ft.  
Ceiling Height: 7' 11"



\*\* While all reasonable attempts have been made to ensure accuracy and the square footage and room dimensions are believed to be correct to ANSI Standards, due to the possibility of human error the information cannot be guaranteed. E&O Insured for \$1,000,000  
\*\* Total square footage includes unfinished mechanical area