

145 Forest Park Way, Port Moody

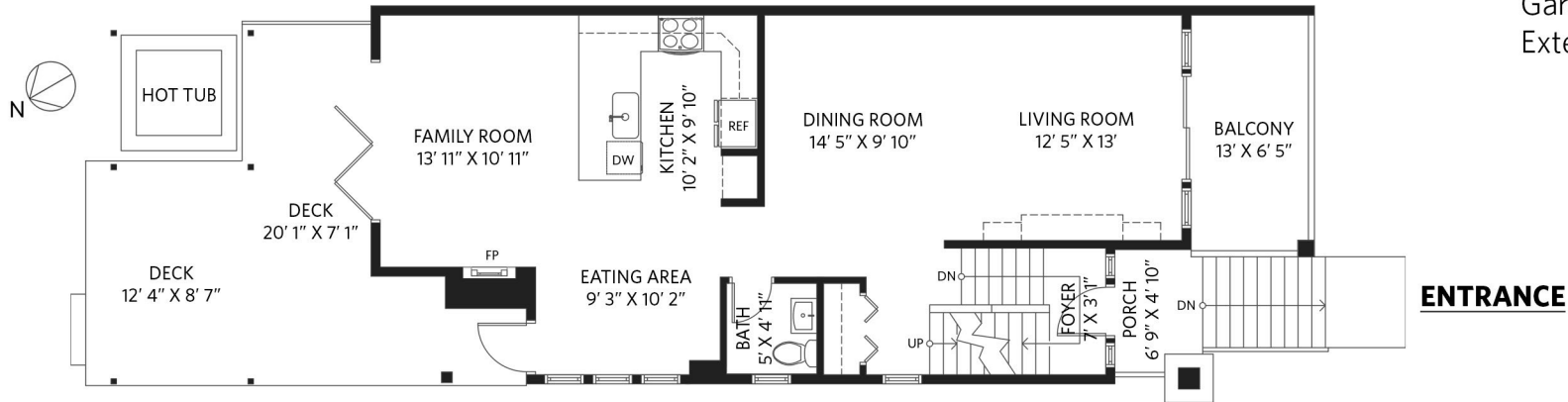
3 bedrooms + den + 2 1/2 bathrooms

Lower Floor: 424 sq.ft.
Main Floor: 853 sq.ft.
Upper Floor: 865 sq.ft.
Total Interior: 2,142 sq.ft.

Garage: 521 sq.ft.
Exterior Living: 455 sq.ft.

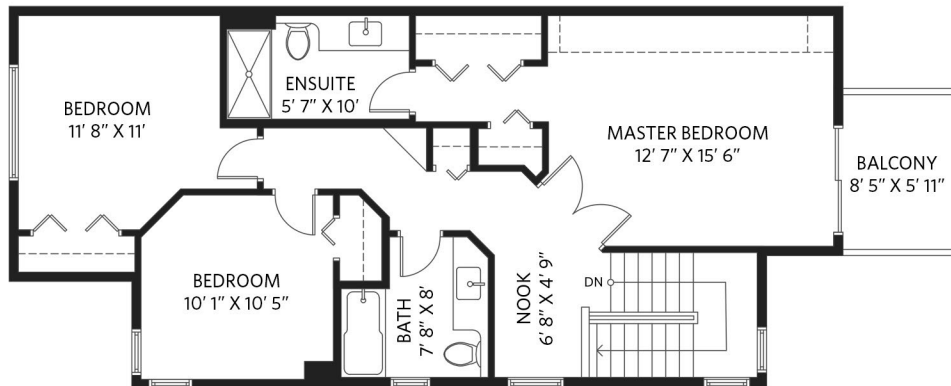
Main Floor - 853 sq.ft.

Ceiling height - 9' 0"



Upper Floor - 865 sq.ft.

Ceiling height - 8' 0"



Lower Floor - 424 sq.ft.

Ceiling height - 7' 8" to 9' 9"

