

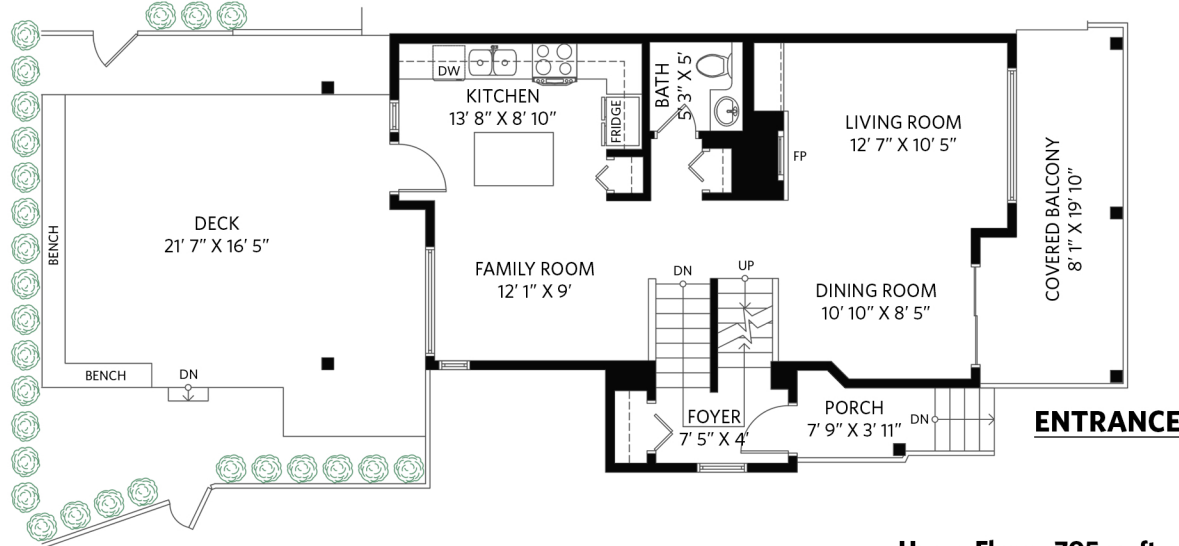
## #57-50 Panorama Place, Port Moody

3 bedrooms + 3 1/2 bathrooms

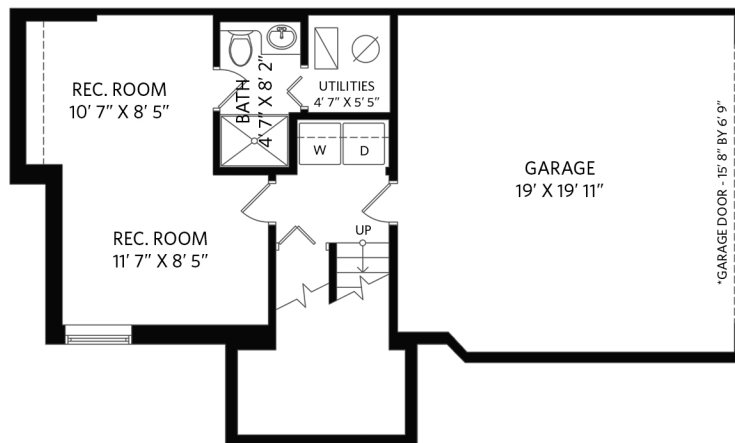
Lower Floor: 411 sq.ft.  
Main Floor: 694 sq.ft.  
Upper Floor: 705 sq.ft.  
**Total Interior: 1,810 sq.ft.**

Attached Garage: 382 sq.ft.  
Exterior Living: 533 sq.ft.

### Main Floor - 694 sq.ft. Ceiling height - 9' 0"



### Lower Floor - 411 sq.ft. Ceiling height - 8' 7"



### Upper Floor - 705 sq.ft. Ceiling height - 8' 0"

