

#37-55 Hawthorn Drive, Port Moody

3 bedrooms + 2 1/2 bathrooms

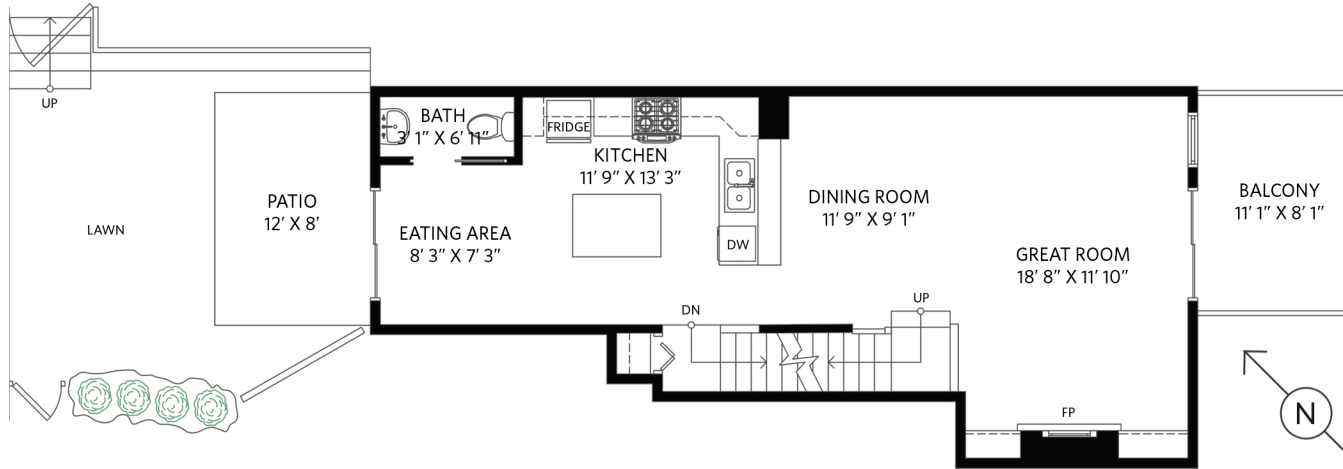
Lower Floor: 117 sq.ft.
Main Floor: 688 sq.ft.
Upper Floor: 688 sq.ft.

Total Interior: 1,493 sq.ft.

Attached Garage: 556 sq.ft.
Exterior Living: 209 sq.ft.

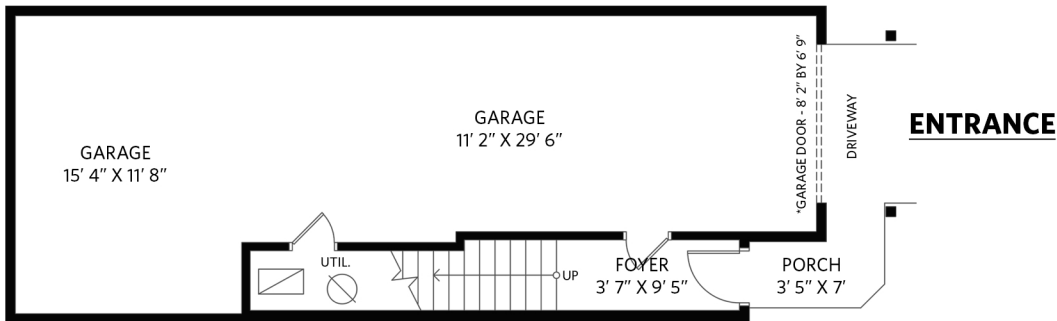
Main Floor - 688 sq.ft.

Ceiling height - 8' 10"



Lower Floor - 117 sq.ft.

Ceiling height - 8' 10"



Upper Floor - 688 sq.ft.

Ceiling height - 8' 0"

