

42 Alder Drive, Port Moody

3 bedrooms + den + 2 full bathrooms + 2 half bathrooms

Lower Floor: 820 sq.ft.
Main Floor: 1,019 sq.ft.
Upper Floor: 863 sq.ft.
Total Interior: 2,702 sq.ft.

Attached Garage: 407 sq.ft.
Exterior Living: 338 sq.ft.

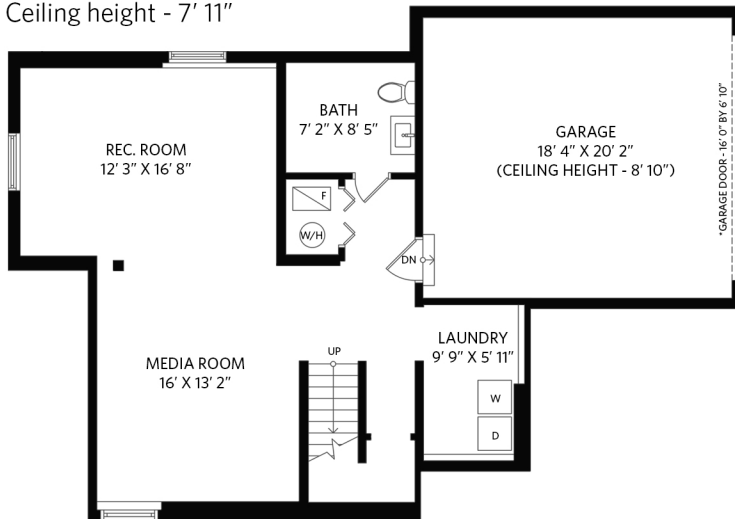
Upper Floor - 863 sq.ft.

Ceiling height - 8' 0" to 10' 6"



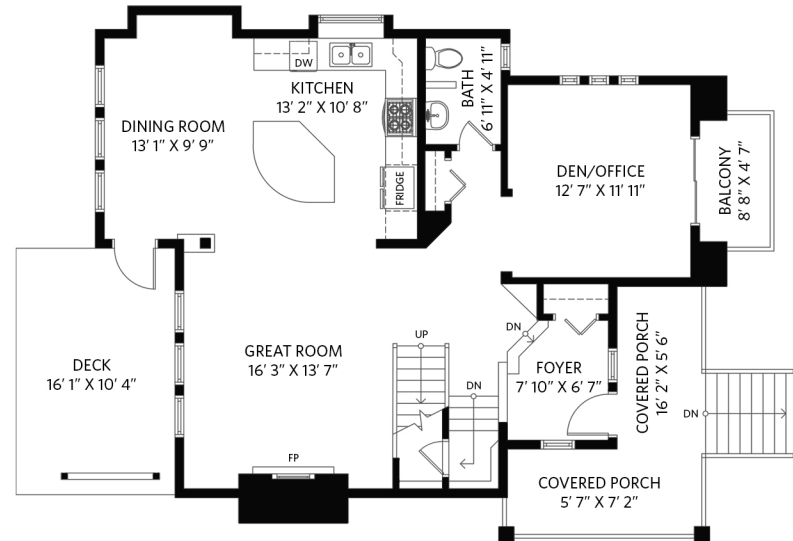
Lower Floor - 820 sq.ft.

Ceiling height - 7' 11"



Main Floor - 1,019 sq.ft.

Ceiling height - 8' 10" to 9' 9"



ENTRANCE

