

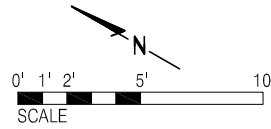
MONET TYLER

604.931.4307

Royal LePage West

www.monettyler.com

monet@monettyler.com



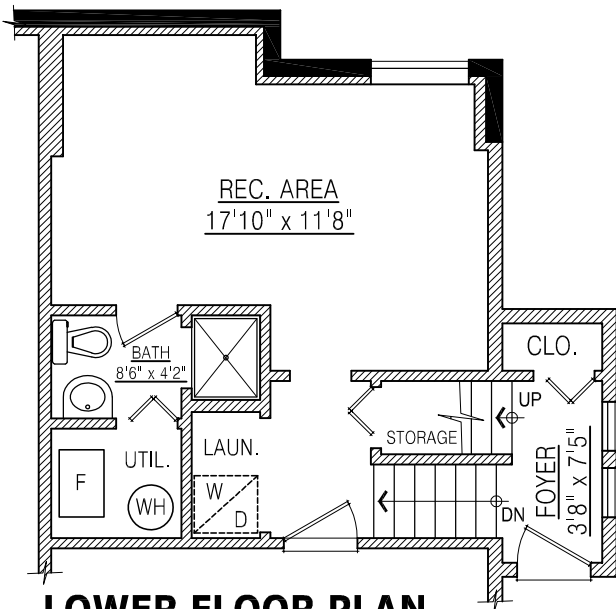
**33 - 15 Forest Park Way
Port Moody, BC**

Lower Floor: 443 sq. ft.

Main Floor: 677 sq. ft.

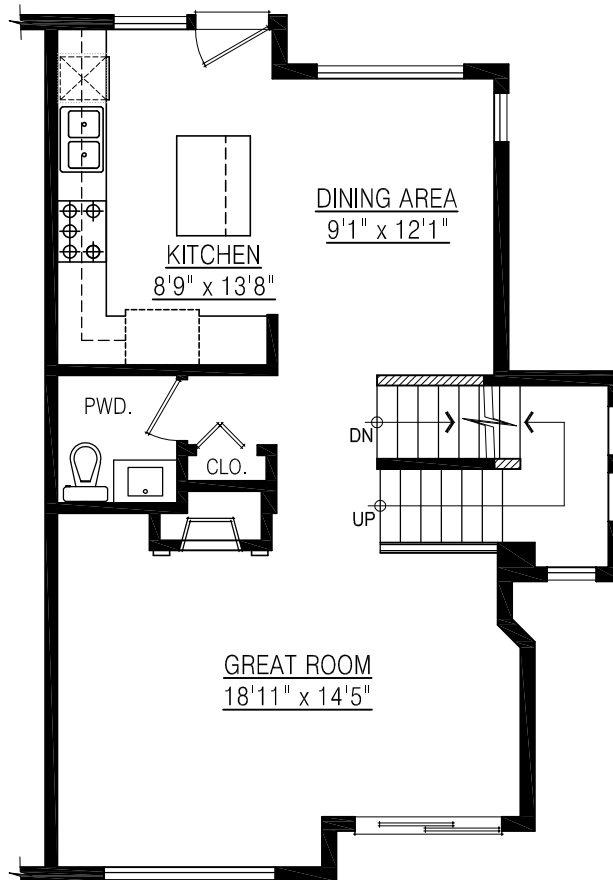
Upper Floor: 645 sq. ft.

Total: 1,765 sq. ft.



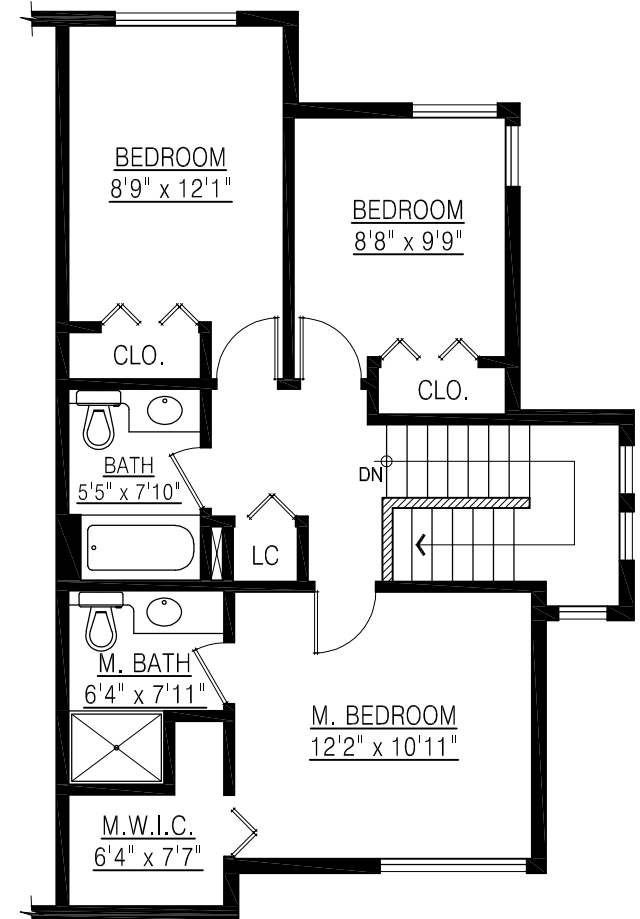
LOWER FLOOR PLAN

FLOOR AREA: 443 sq.ft.



MAIN FLOOR PLAN

FLOOR AREA: 677 sq.ft.



UPPER FLOOR PLAN

FLOOR AREA: 645 sq.ft.