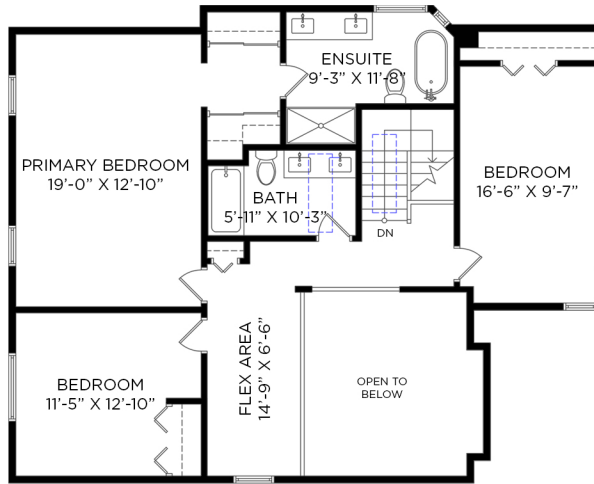


## #9 BOULDERWOOD PL PORT MOODY, BC

4 BEDROOMS + DEN + 3 1/2 BATHROOMS

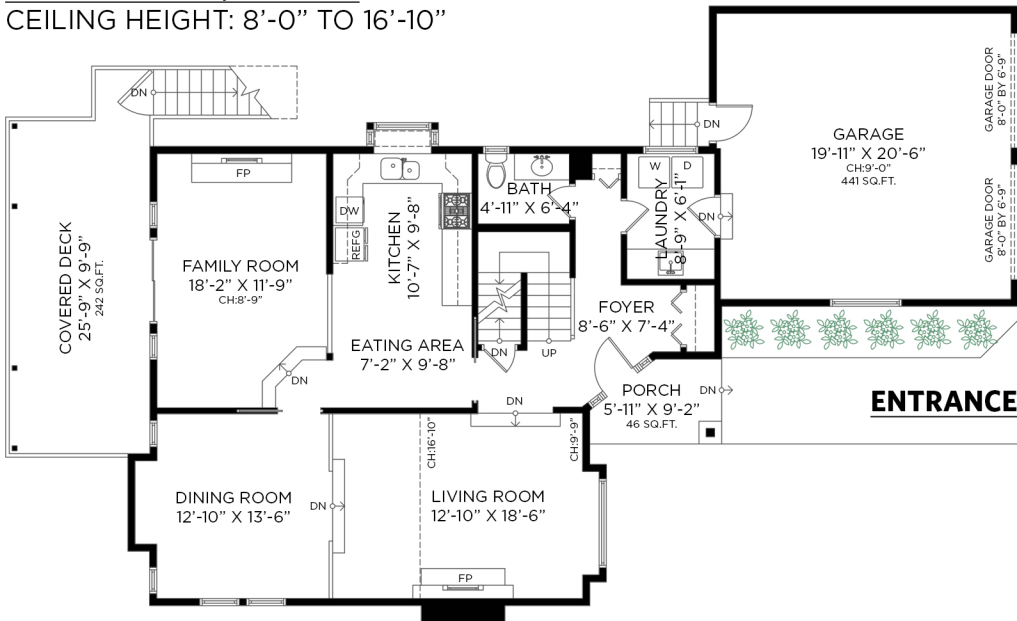
**UPPER FLOOR - 1,080 SQ.FT.**  
CEILING HEIGHT: 8'-0"



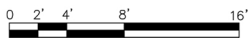
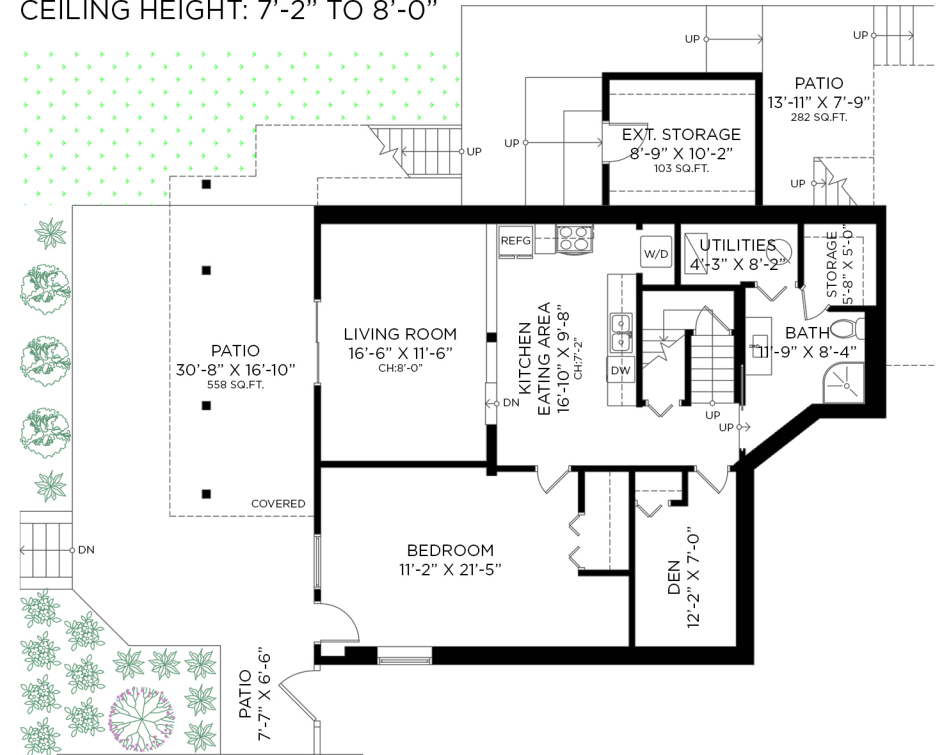
LOWER FLOOR: 1,124 SQ.FT.  
MAIN FLOOR: 1,151 SQ.FT.  
UPPER FLOOR: 1,080 SQ.FT.  
**TOTAL INTERIOR: 3,355 SQ.FT.**

ATTACHED GARAGE: 441 SQ.FT.  
EXTERIOR LIVING: 1,128 SQ.FT.  
EXTERIOR STORAGE: 103 SQ.FT.

**MAIN FLOOR - 1,151 SQ.FT.**  
CEILING HEIGHT: 8'-0" TO 16'-10"



**LOWER FLOOR - 1,124 SQ.FT.**  
CEILING HEIGHT: 7'-2" TO 8'-0"



Floor plan not suitable for architectural/construction purposes. ANSI Z765 stand used to calculate square footage. Buyer to verify. E&O insured for \$1,000,000.