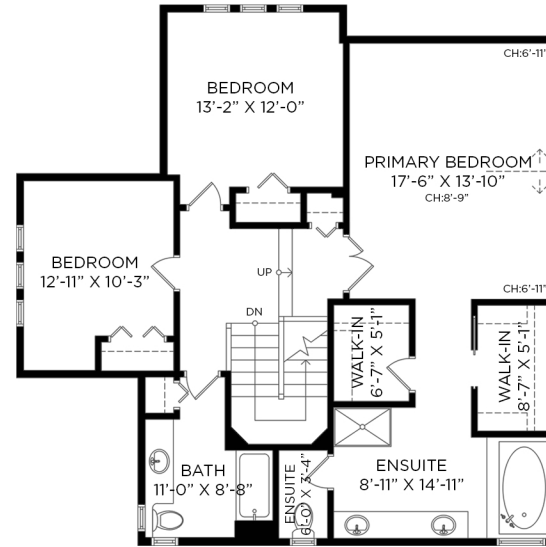


64 MAPLE DRIVE

PORT MOODY, BC

4 BEDROOMS + DEN + 3 1/2 BATHROOMS

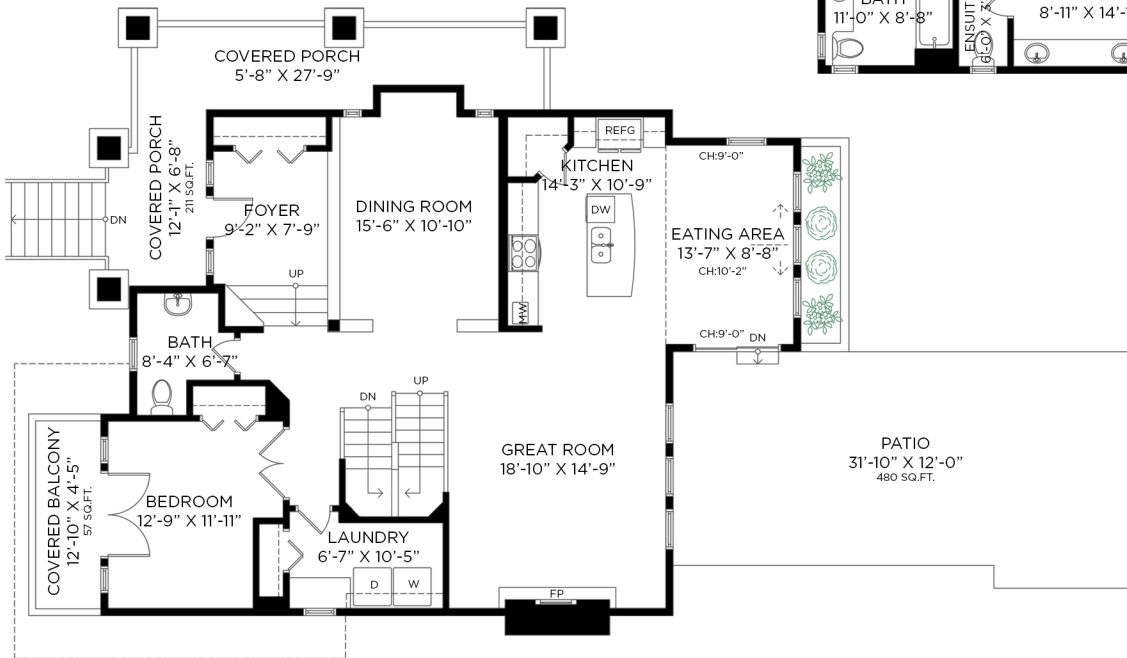
UPPER FLOOR - 1,132 SQ.FT.
 CEILING HEIGHT: 6'-11" TO 8'-9"



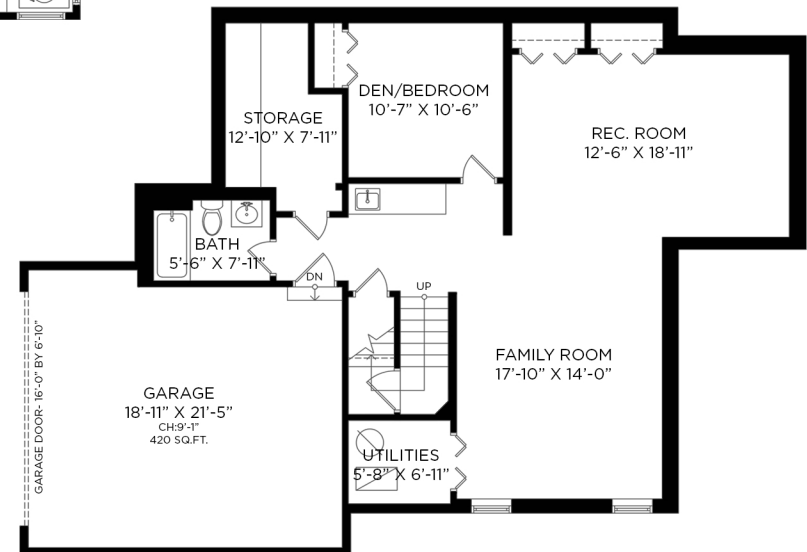
LOWER FLOOR: 1,127 SQ.FT.
 MAIN FLOOR: 1,393 SQ.FT.
 UPPER FLOOR: 1,132 SQ.FT.
TOTAL INTERIOR: 3,652 SQ.FT.

ATTACHED GARAGE: 420 SQ.FT.
 DETACHED GARAGE: 523 SQ.FT.
 EXTERIOR LIVING: 748 SQ.FT.

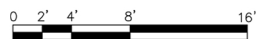
MAIN FLOOR - 1,393 SQ.FT.
 CEILING HEIGHT: 8'-11" TO 10'-8"



LOWER FLOOR - 1,127 SQ.FT.
 CEILING HEIGHT: 7'-8"



ENTRANCE



Floor plan not suitable for architectural/construction purposes. ANSI Z765 stand used to calculate square footage. Buyer to verify. E&O insured for \$1,000,000.