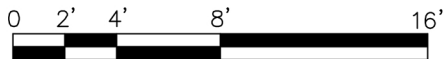
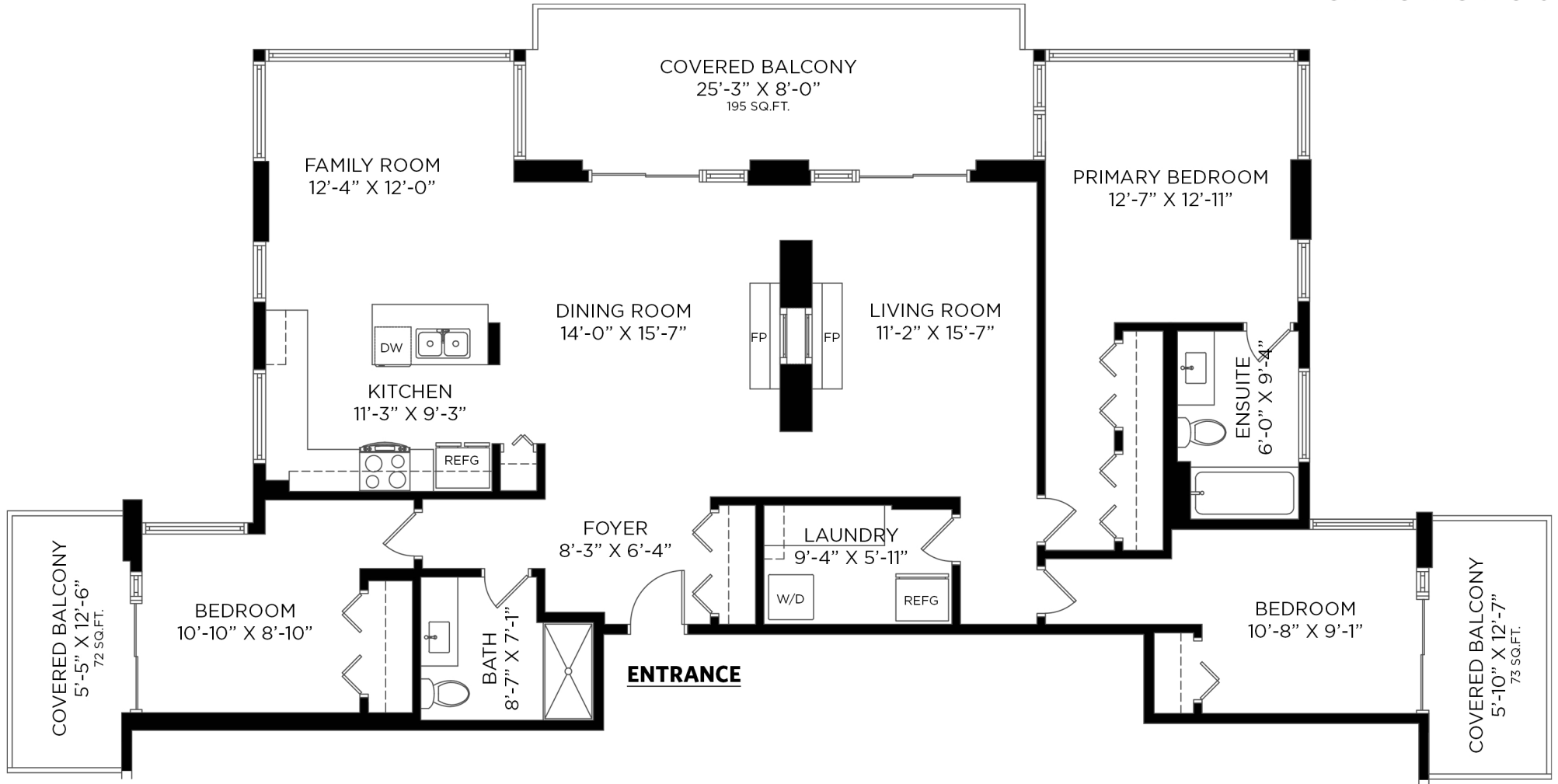


3 BEDROOMS + 2 BATHROOMS

TOTAL INTERIOR: 1,622 SQ.FT.
EXTERIOR LIVING: 340 SQ.FT.

CEILING HEIGHT: 8'-0"



Floor plan not suitable for architectural/construction purposes. ANSI Z765 stand used to calculate square footage. Buyer to verify. E&O insured for \$1,000,000.