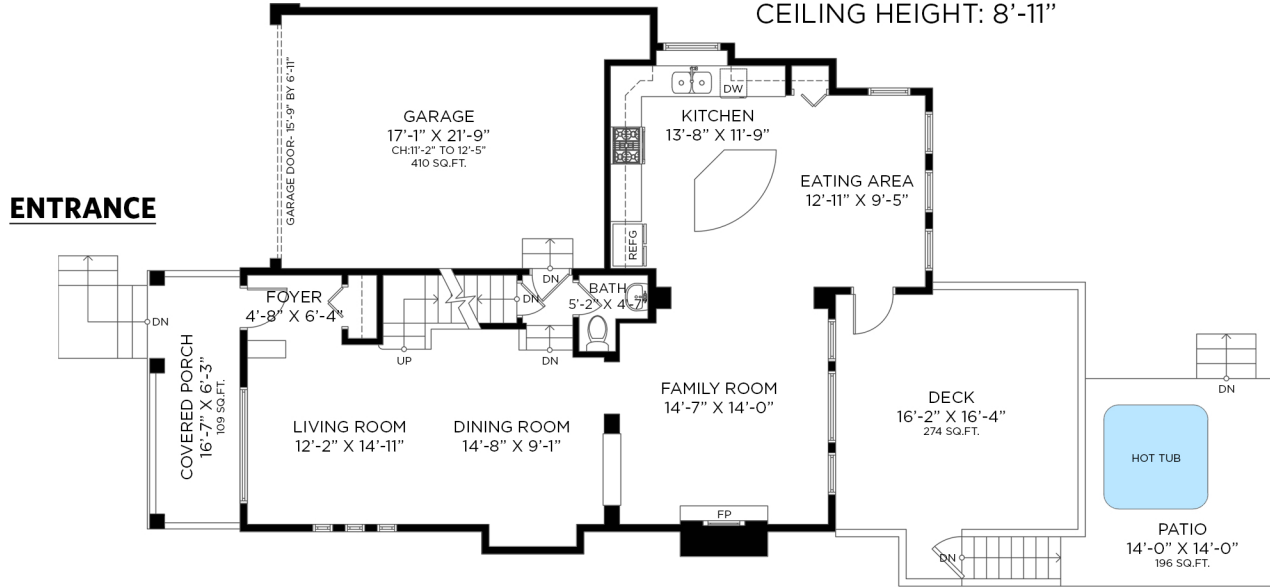


71 HOLLY DRIVE PORT MOODY, BC

5 BEDROOMS + 3 1/2 BATHROOMS

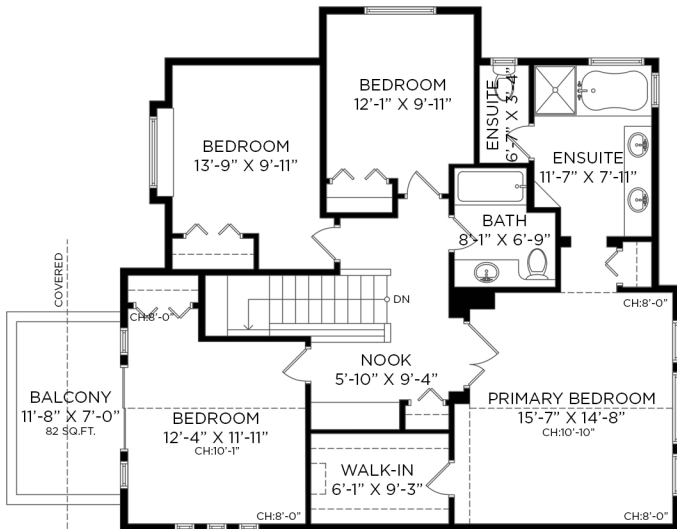
MAIN FLOOR - 1,035 SQ.FT.
CEILING HEIGHT: 8'-11"



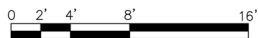
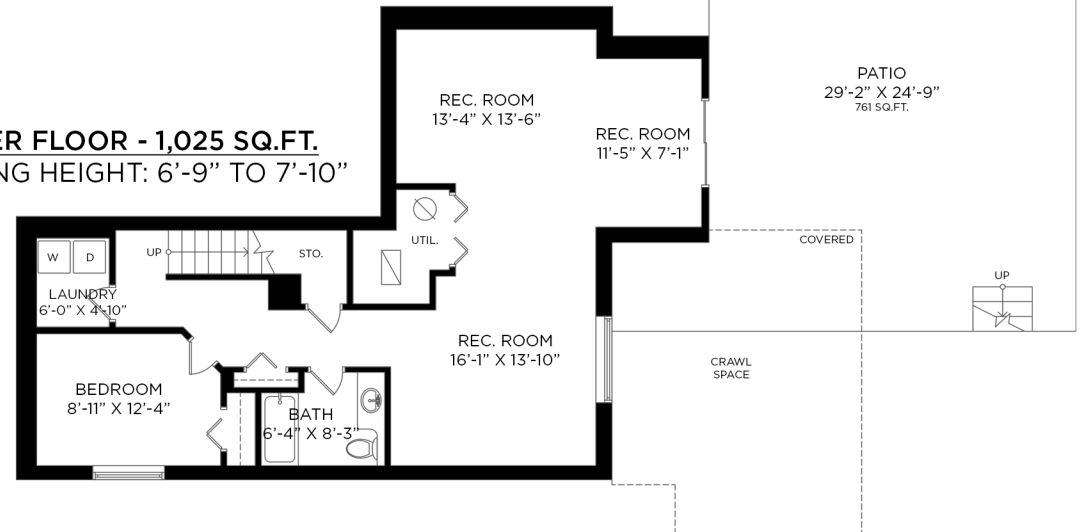
LOWER FLOOR: 1,025 SQ.FT.
MAIN FLOOR: 1,035 SQ.FT.
UPPER FLOOR: 1,178 SQ.FT.
TOTAL INTERIOR: 3,238 SQ.FT.

ATTACHED GARAGE: 410 SQ.FT.
EXTERIOR LIVING: 1,422 SQ.FT.

UPPER FLOOR - 1,178 SQ.FT.
CEILING HEIGHT: 8'-0" TO 10'-10"



LOWER FLOOR - 1,025 SQ.FT.
CEILING HEIGHT: 6'-9" TO 7'-10"



Floor plan not suitable for architectural/construction purposes. ANSI Z765 stand used to calculate square footage. Buyer to verify. E&O insured for \$1,000,000.