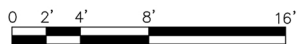
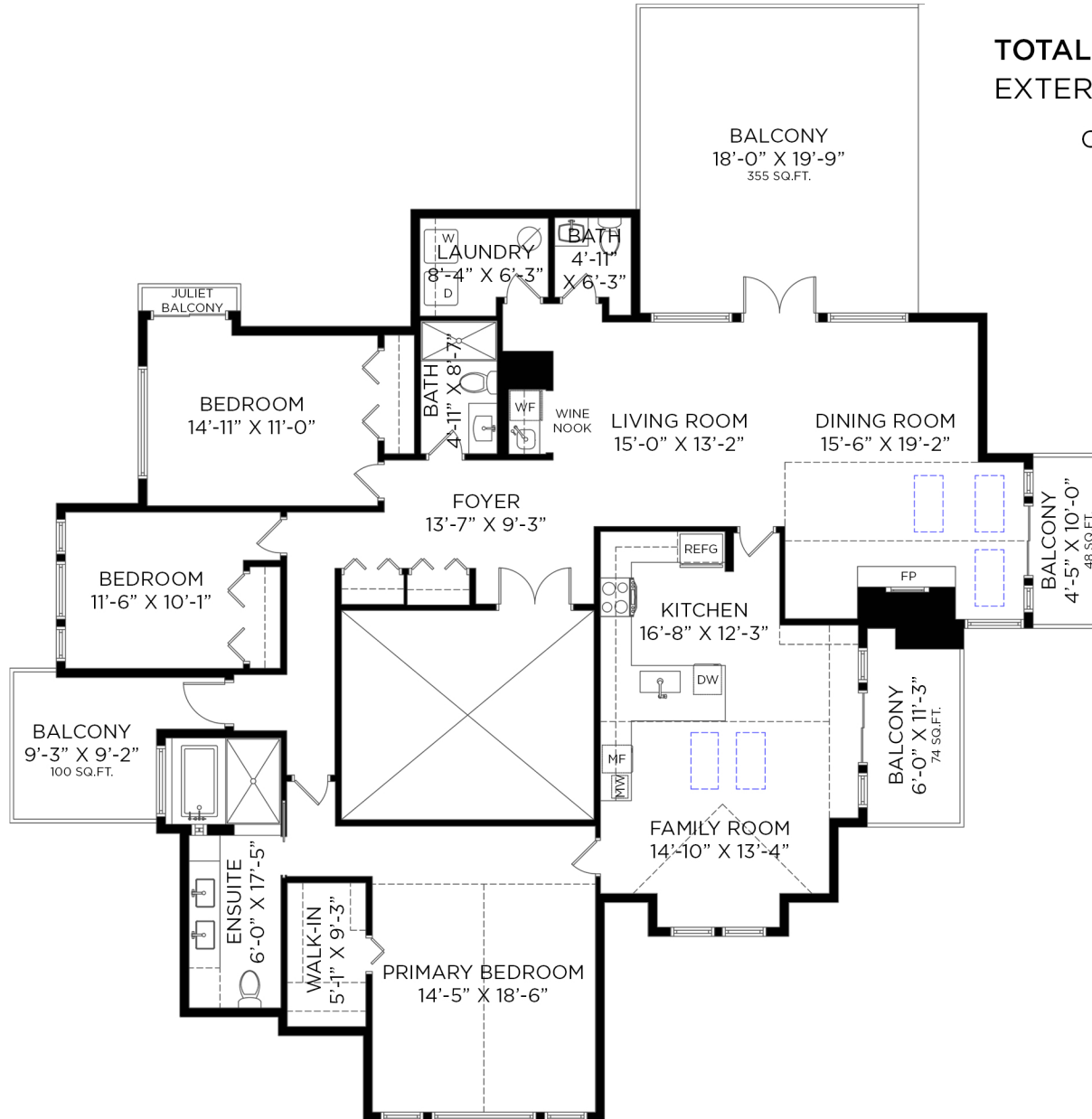


#401-180 RAVINE DRIVE PORT MOODY, BC

3 BEDROOMS + 2 1/2 BATHROOMS

TOTAL INTERIOR: 2,208 SQ.FT.
EXTERIOR LIVING: 577 SQ.FT.

CEILING HEIGHT: 8'-0" TO 15'-3"



Floor plan not suitable for architectural/construction purposes. ANSI Z765 stand used to calculate square footage. Buyer to verify. E&O insured for \$1,000,000.

