

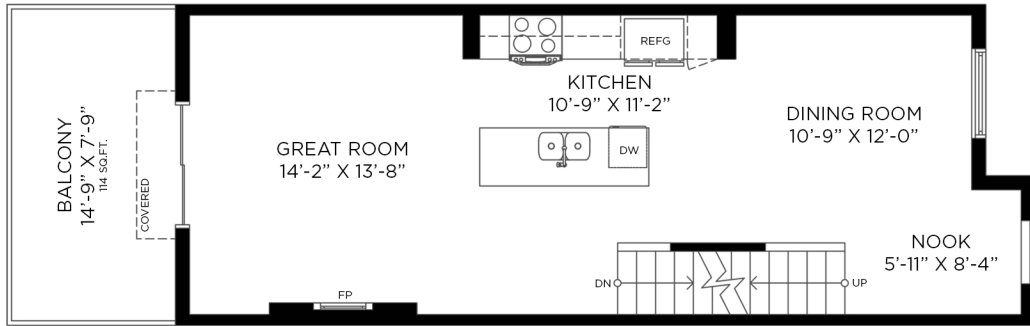
#38-2325 RANGER LANE PORT COQUITLAM, BC

3 BEDROOMS + 3 BATHROOMS

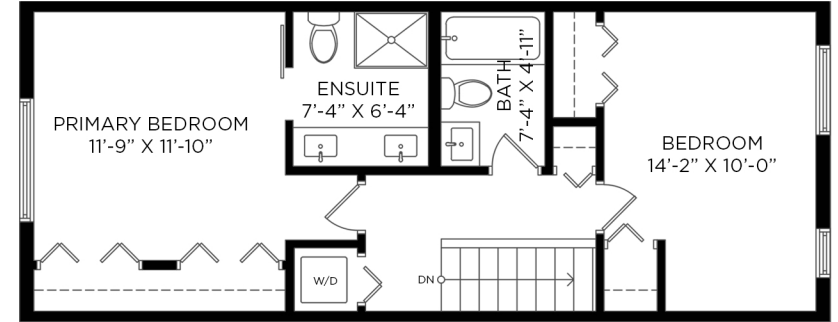
LOWER FLOOR: 296 SQ.FT.
MAIN FLOOR: 600 SQ.FT.
UPPER FLOOR: 581 SQ.FT.
TOTAL INTERIOR: 1,477 SQ.FT.

ATTACHED GARAGE: 304 SQ.FT.
EXTERIOR LIVING: 133 SQ.FT.

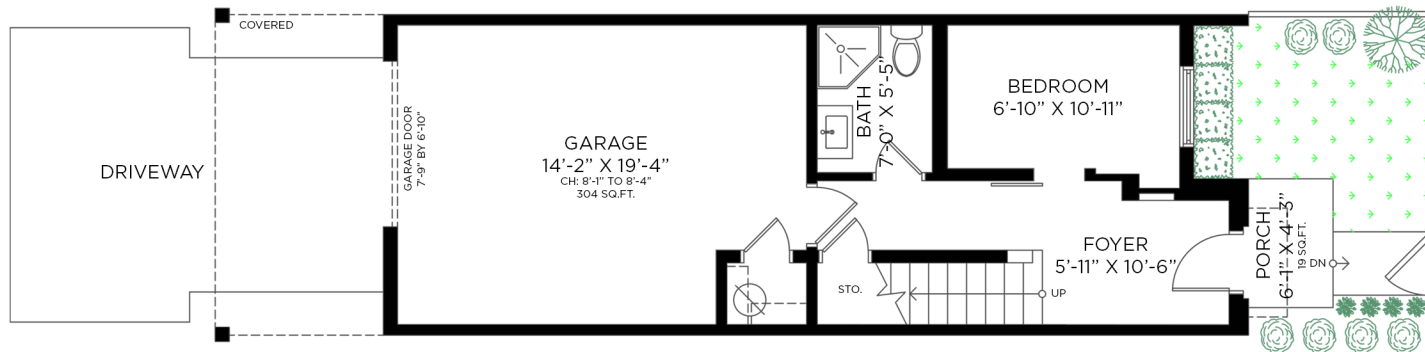
UPPER FLOOR - 581 SQ.FT. CEILING HEIGHT: 8'-0"



MAIN FLOOR - 600 SQ.FT. CEILING HEIGHT: 9'-0"



LOWER FLOOR - 296 SQ.FT. CEILING HEIGHT: 8'-0"



ENTRANCE



Floor plan not suitable for architectural/construction purposes. ANSI Z765 stand used to calculate square footage. Buyer to verify. E&O insured for \$1,000,000.