

MONET TYLER

PERSONAL REAL ESTATE CORPORATION

604.763.4307 monet@monettyler.com

www.monettyler.com

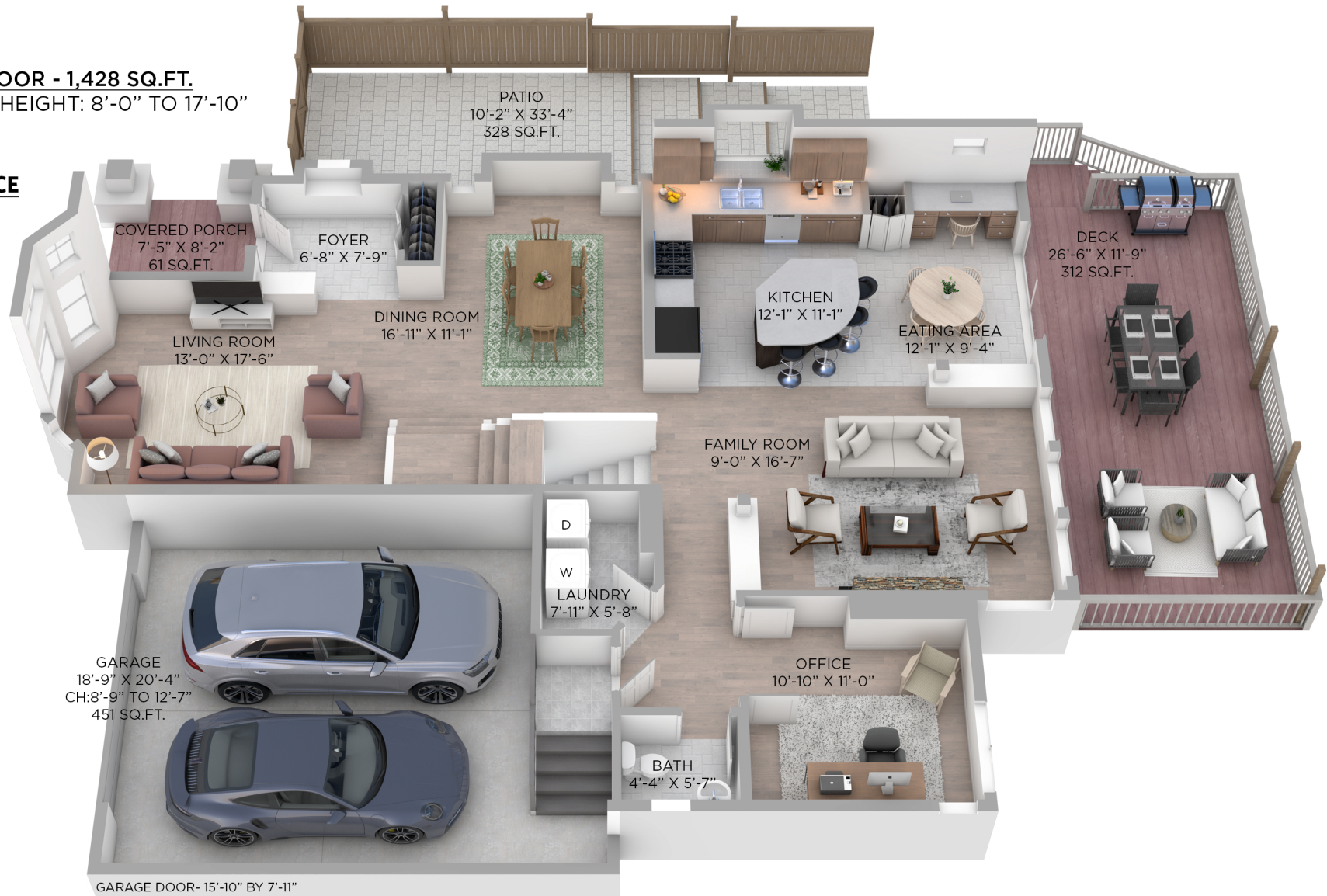
ROYAL LEPAGE
West Real Estate Services

82 CLIFFWOOD DR PORT MOODY, BC

5 BEDROOMS + OFFICE + DEN + 3 1/2 BATHROOMS

MAIN FLOOR - 1,428 SQ.FT.
CEILING HEIGHT: 8'-0" TO 17'-10"

ENTRANCE



Floor plan not suitable for architectural/construction purposes. ANSI Z765 stand used to calculate square footage. Buyer to verify. E&O insured for \$1,000,000.

OPTIMUM
FLOOR PLAN DESIGNS