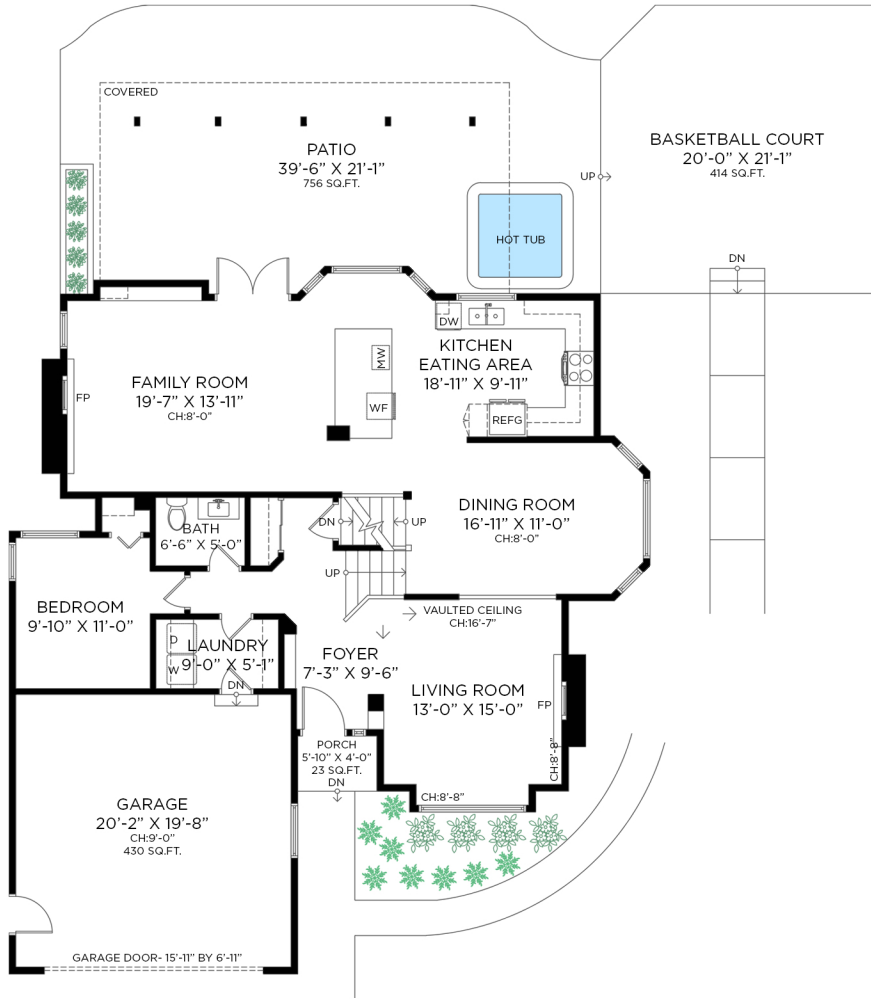


2823 THIMBLEBERRY COURT COQUITLAM, BC

6 BEDROOMS + 3 1/2 BATHROOMS

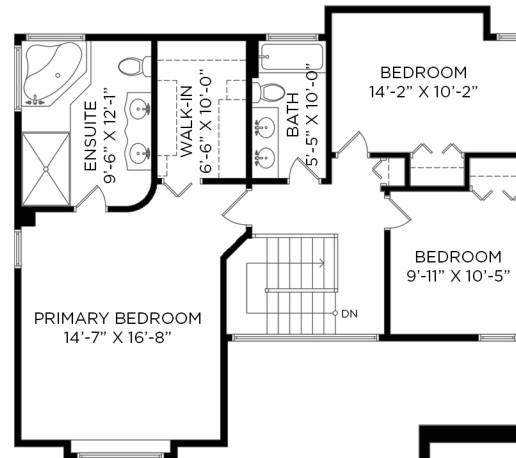
LOWER FLOOR:	755 SQ.FT.	ATTACHED GARAGE:	430 SQ.FT.
MAIN FLOOR:	1,394 SQ.FT.	EXTERIOR LIVING:	779 SQ.FT.
UPPER FLOOR:	995 SQ.FT.	BASKETBALL COURT:	414 SQ.FT.
TOTAL INTERIOR:	3,144 SQ.FT.	CRAWL SPACE:	577 SQ.FT.

MAIN FLOOR - 1,394 SQ.FT.
CEILING HEIGHT: 8'-0" TO 16'-7"

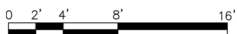
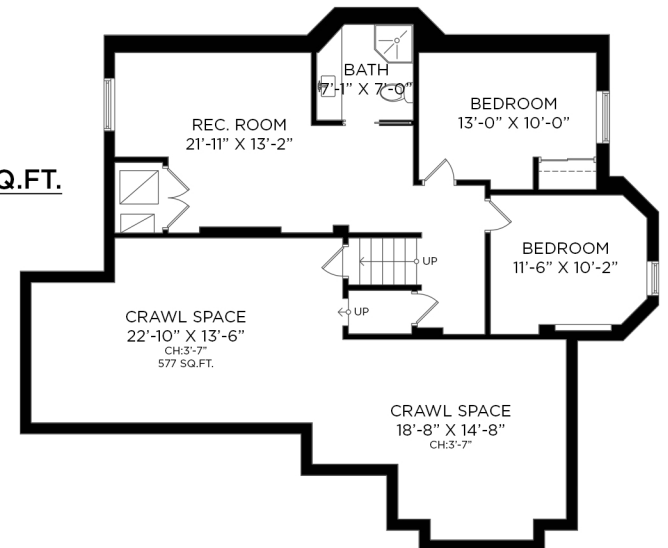


ENTRANCE

UPPER FLOOR - 995 SQ.FT.
CEILING HEIGHT: 8'-0"



LOWER FLOOR - 755 SQ.FT.
CEILING HEIGHT: 7'-10"



Floor plan not suitable for architectural/construction purposes. ANSI Z765 stand used to calculate square footage. Buyer to verify. E&O insured for \$1,000,000.