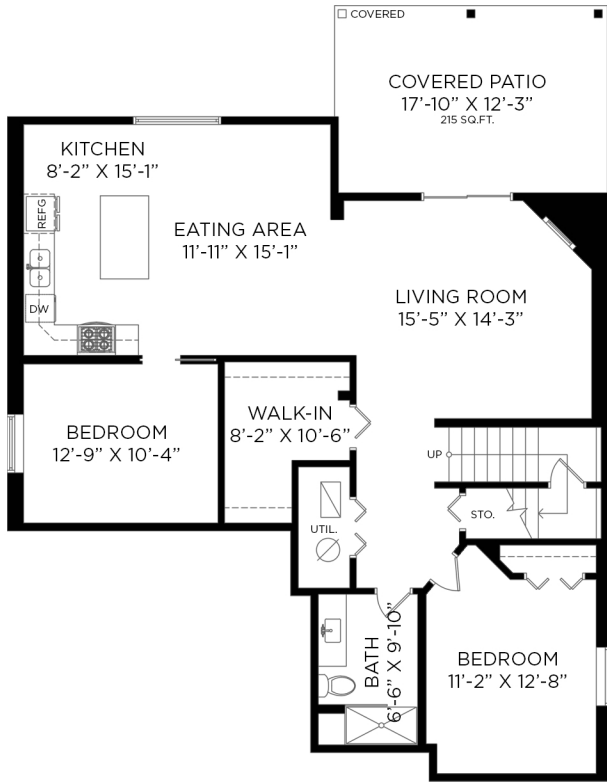


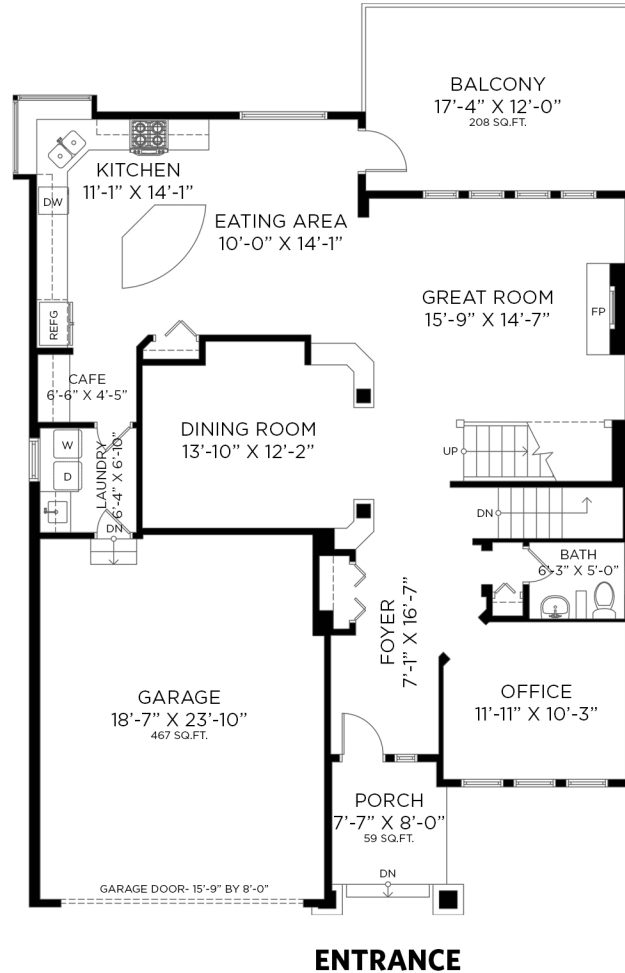
3 MAPLE DRIVE PORT MOODY, BC

5 BEDROOMS + OFFICE + 3 1/2 BATHROOMS

LOWER FLOOR - 1,281 SQ.FT.
CEILING HEIGHT: 7'-8"



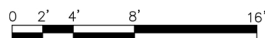
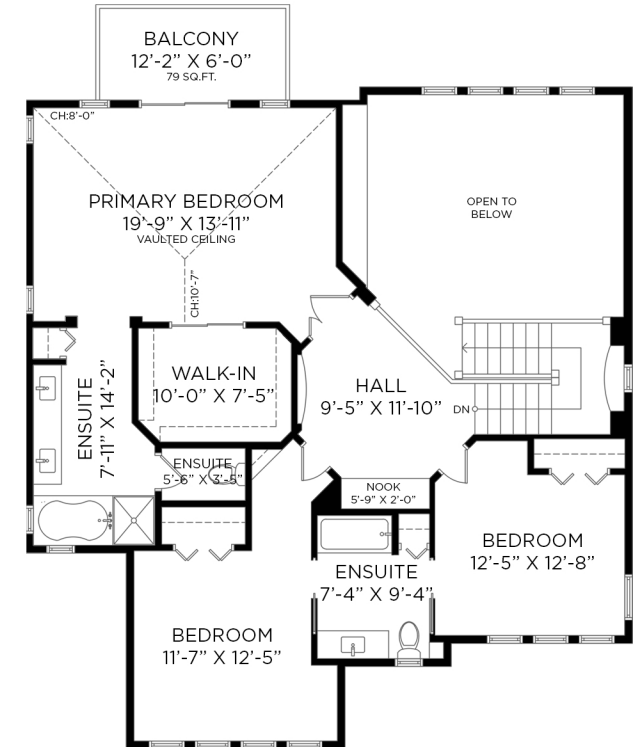
MAIN FLOOR - 1,329 SQ.FT.
CEILING HEIGHT: 8'-10" TO 17'-9"



LOWER FLOOR: 1,281 SQ.FT.
MAIN FLOOR: 1,329 SQ.FT.
UPPER FLOOR: 1,202 SQ.FT.
TOTAL INTERIOR: 3,812 SQ.FT.

ATTACHED GARAGE: 467 SQ.FT.
EXTERIOR LIVING: 561 SQ.FT.

UPPER FLOOR - 1,202 SQ.FT.
CEILING HEIGHT: 8'-0" TO 10'-7"



Floor plan not suitable for architectural/construction purposes. ANSI Z765 standards used to calculate square footage. Buyer to verify. E&O insured for \$1,000,000.