

MONET TYLER

PERSONAL REAL ESTATE CORPORATION

604.763.4307 monet@monettyler.com
www.monettyler.com



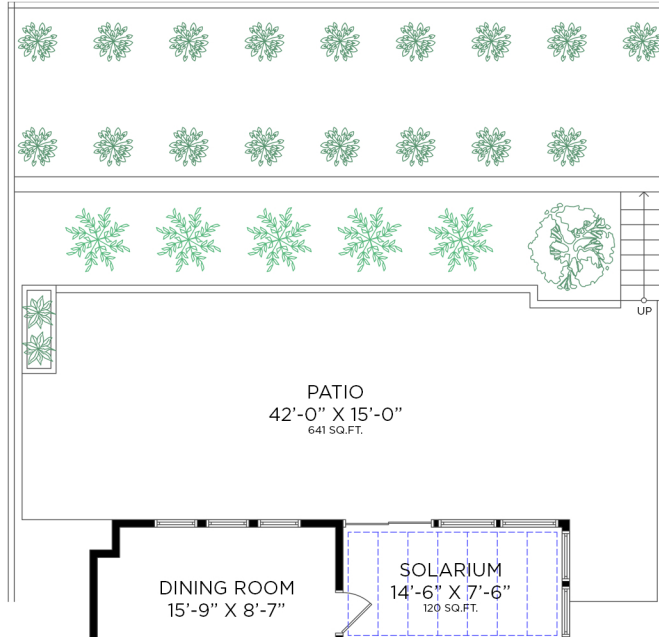
164 SYCAMORE DR PORT MOODY, BC

4 BEDROOMS + DEN +
3 1/2 BATHROOMS

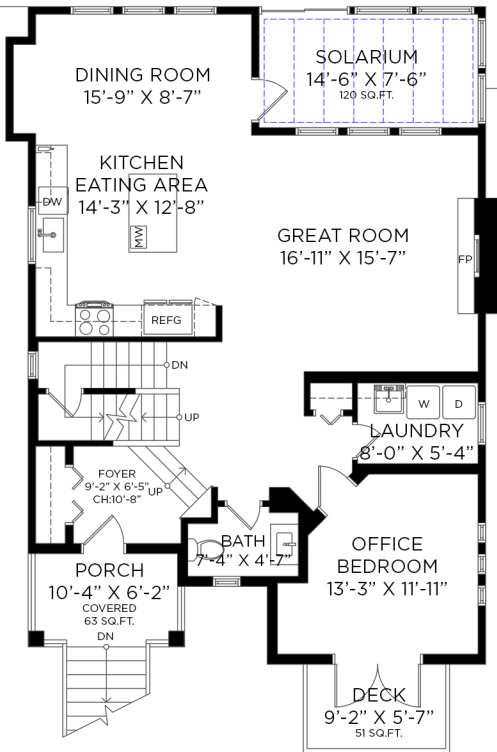
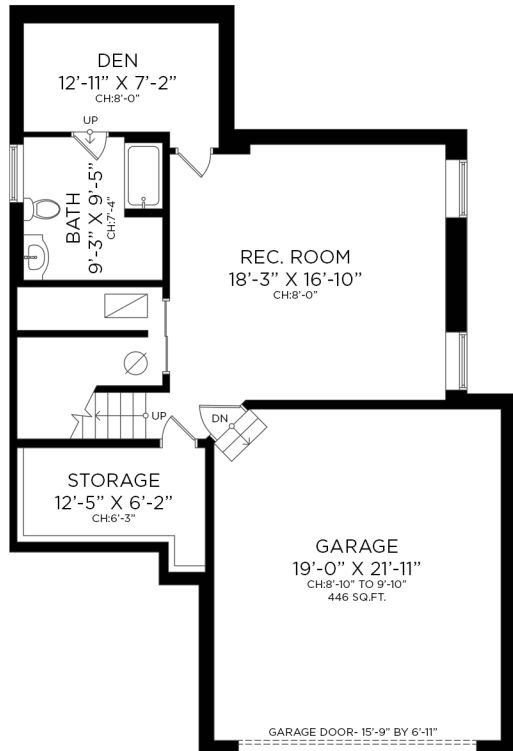
LOWER FLOOR: 820 SQ.FT.
MAIN FLOOR: 1,103 SQ.FT.
UPPER FLOOR: 891 SQ.FT.
TOTAL INTERIOR: 2,814 SQ.FT.

SOLARIUM: 120 SQ.FT.
ATTACHED GARAGE: 466 SQ.FT.
EXTERIOR LIVING: 755 SQ.FT.

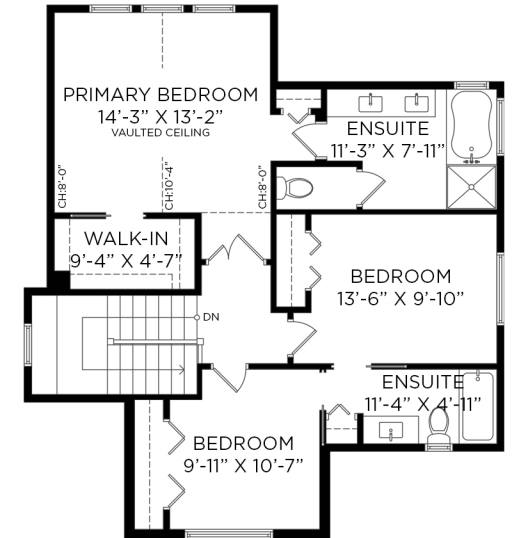
MAIN FLOOR - 1,103 SQ.FT.
CEILING HEIGHT: 9'-0" TO 10'-8"



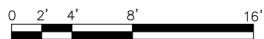
LOWER FLOOR - 820 SQ.FT.
CEILING HEIGHT: 6'-3" TO 8'-0"



UPPER FLOOR - 891 SQ.FT.
CEILING HEIGHT: 8'-0" TO 10'-4"



ENTRANCE



Floor plan not suitable for architectural/construction purposes. ANSI Z765 standards used to calculate square footage. Buyer to verify. E&O insured for \$1,000,000.

