

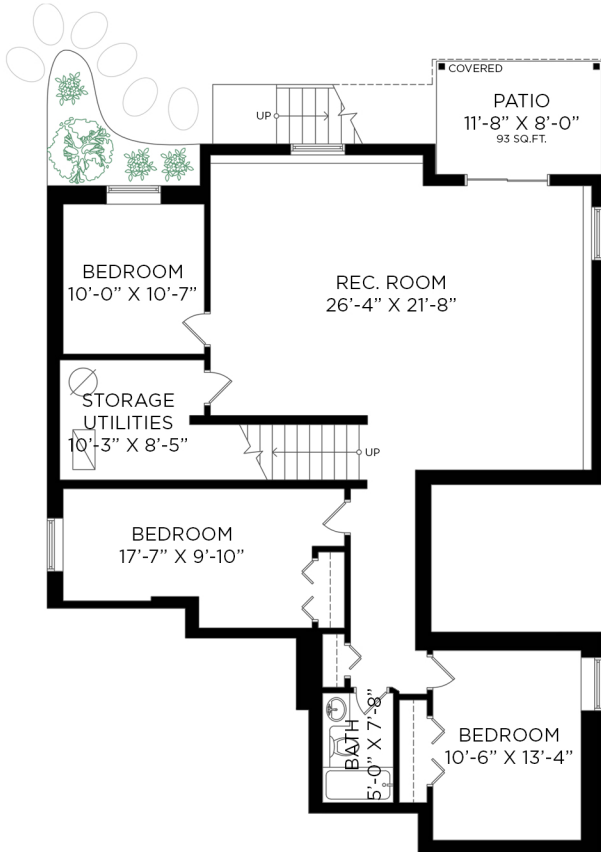
## 10 ASHWOOD DRIVE PORT MOODY, BC

7 BEDROOMS + 3 1/2 BATHROOMS

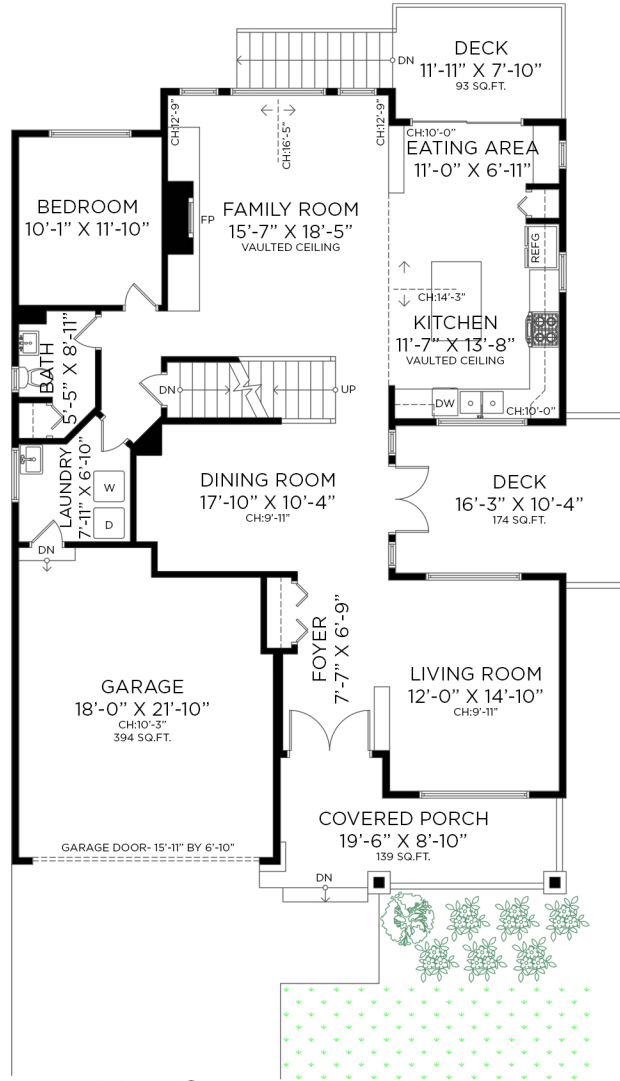
LOWER FLOOR: 1,460 SQ.FT.  
MAIN FLOOR: 1,454 SQ.FT.  
UPPER FLOOR: 1,161 SQ.FT.  
**TOTAL INTERIOR: 4,075 SQ.FT.**

ATTACHED GARAGE: 394 SQ.FT.  
EXTERIOR LIVING: 499 SQ.FT.

### LOWER FLOOR - 1,460 SQ.FT. CEILING HEIGHT: 7'-9"

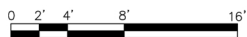
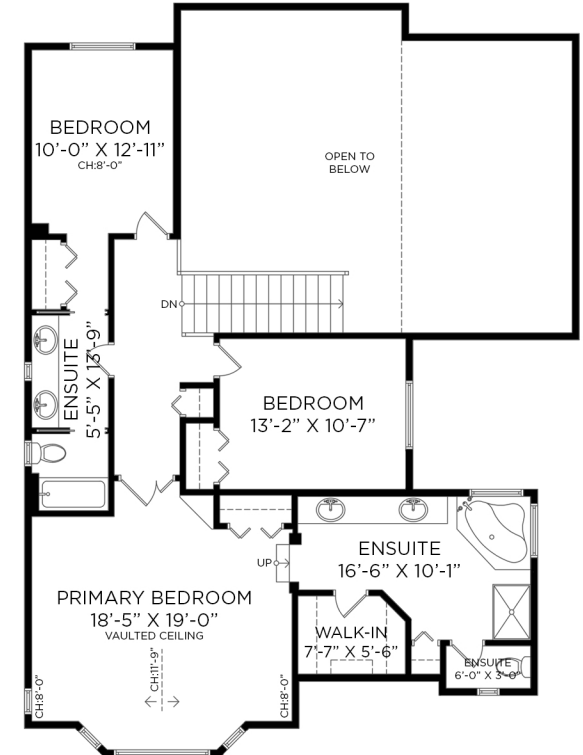


### MAIN FLOOR - 1,454 SQ.FT. CEILING HEIGHT: 9'-11" TO 16'-5"



**ENTRANCE**

### UPPER FLOOR - 1,161 SQ.FT. CEILING HEIGHT: 8'-0" TO 11'-9"



Floor plan not suitable for architectural/construction purposes. ANSI Z765 standards used to calculate square footage. Buyer to verify. E&O insured for \$1,000,000.