

## #21-50 PANORAMA PL PORT MOODY, BC

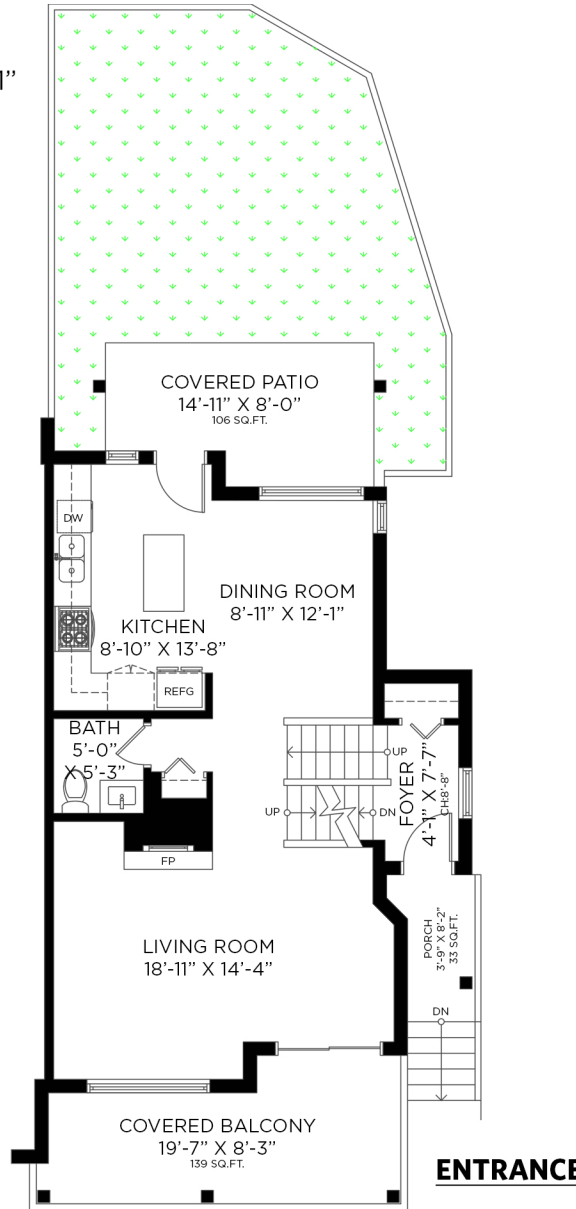
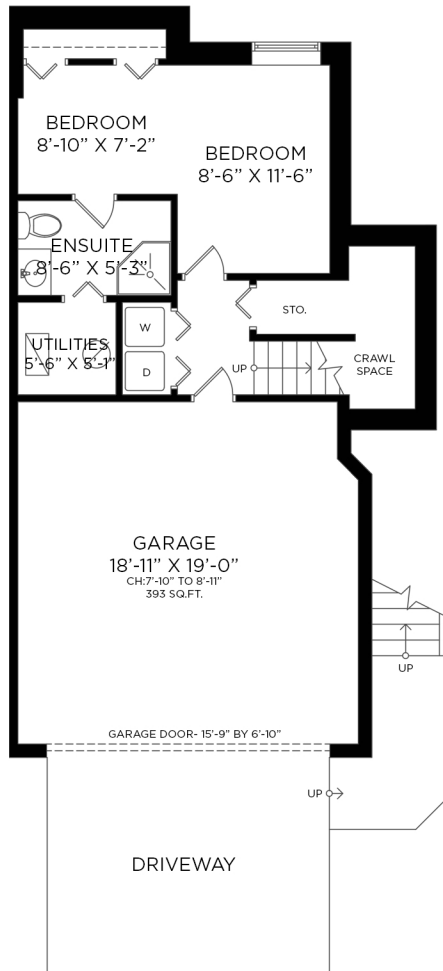
4 BEDROOMS + 3 1/2 BATHROOMS

**MAIN FLOOR - 708 SQ.FT.**  
CEILING HEIGHT: 8'-8" TO 8'-11"

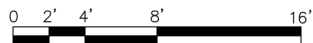
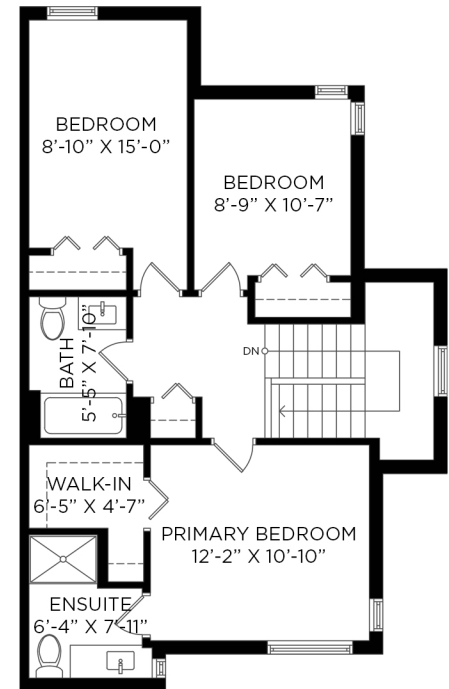
LOWER FLOOR: 455 SQ.FT.  
MAIN FLOOR: 708 SQ.FT.  
UPPER FLOOR: 728 SQ.FT.  
**TOTAL INTERIOR: 1,891 SQ.FT.**

ATTACHED GARAGE: 393 SQ.FT.  
EXTERIOR LIVING: 278 SQ.FT.

**LOWER FLOOR - 455 SQ.FT.**  
CEILING HEIGHT: 8'-0"



**UPPER FLOOR - 728 SQ.FT.**  
CEILING HEIGHT: 8'-0"



Floor plan not suitable for architectural/construction purposes. ANSI Z765 standards used to calculate square footage. Buyer to verify. E&O insured for \$1,000,000.