

MONNET TYLER

604.931.4307

Royal LePage West

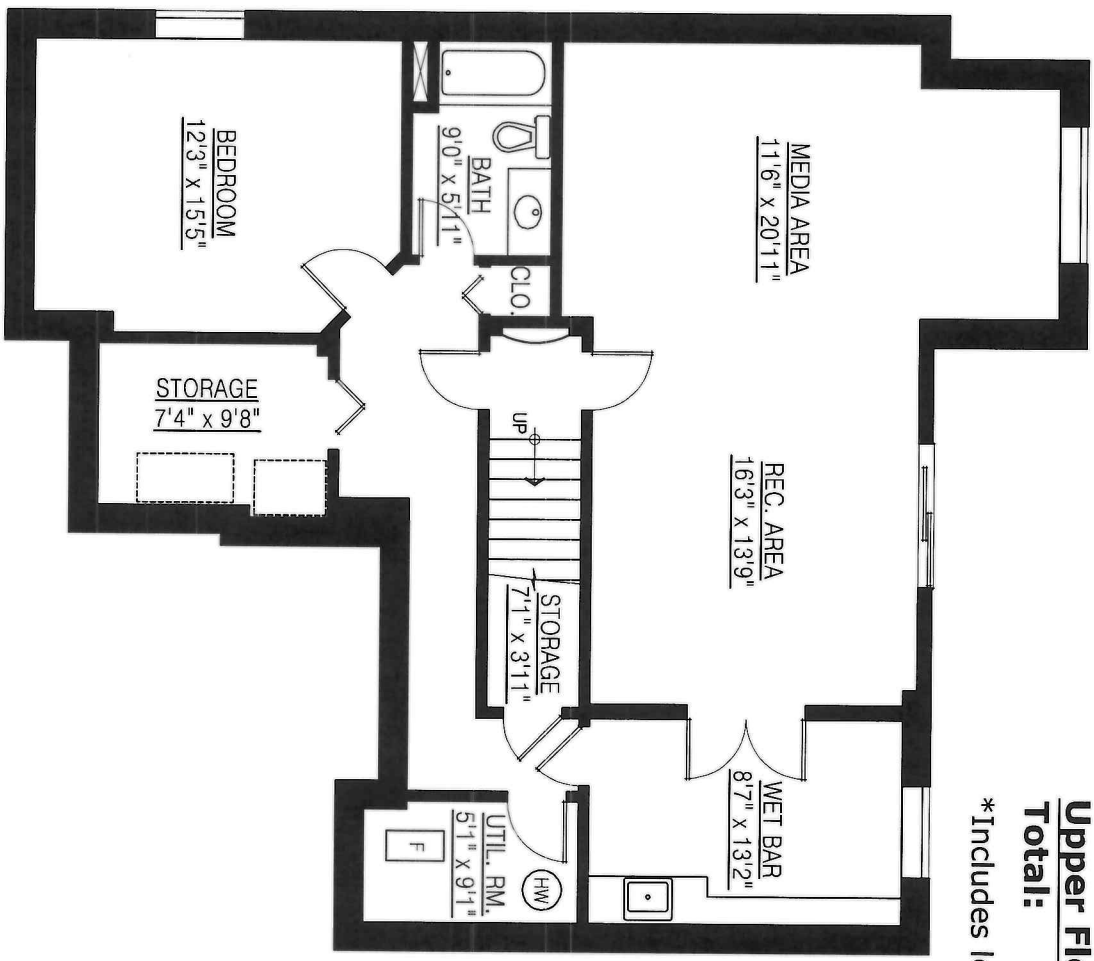
www.monnettyler.com

monnet@monnettyler.com

**42 Cliffwood Dr.
Port Moody, BC**

Basement Floor:	1,307 sq. ft.
Main Floor:	1,351 sq. ft.
Upper Floor:	*1,262 sq. ft.
Total:	*3,920 sq. ft.

*Includes lower ceiling space.



BASEMENT FLOOR PLAN
FLOOR AREA: 1,307 sq.ft.

MONNET TYLERS

604.931.4307

Royal LePage West

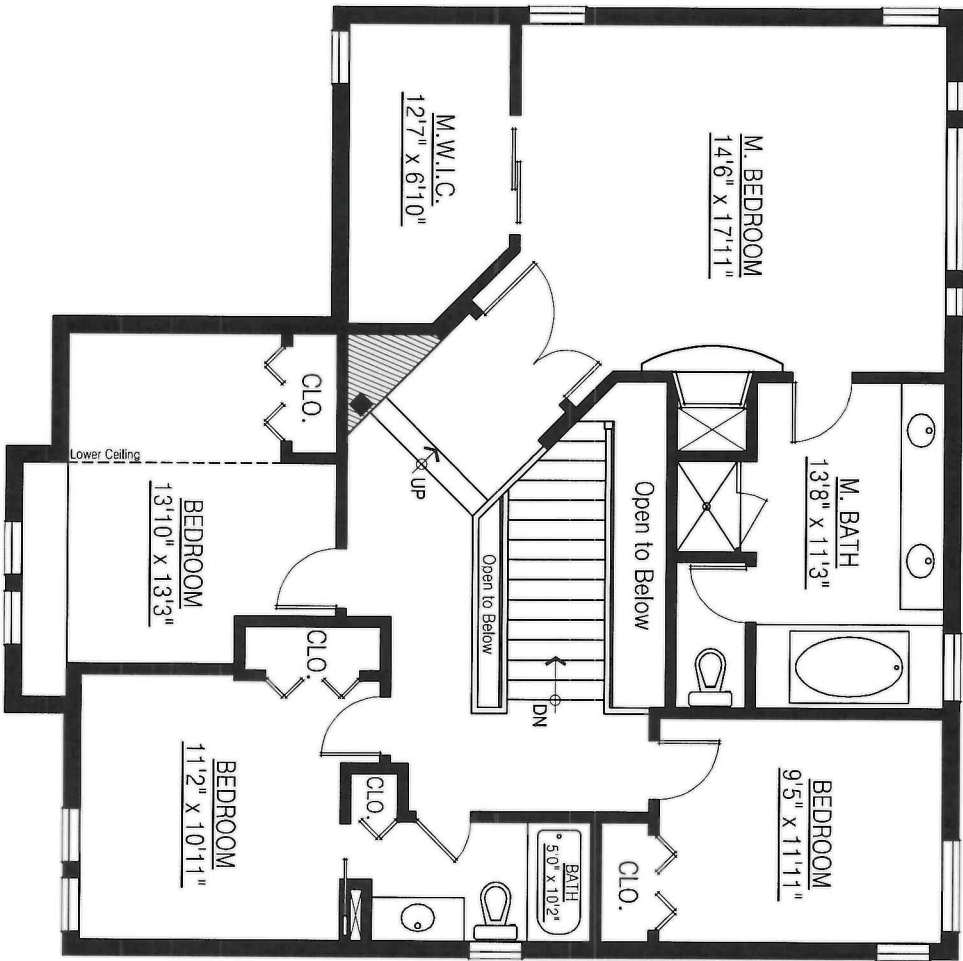
www.monnettyler.com

monnet@monnettyler.com

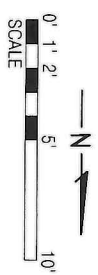
**42 Cliffwood Dr.
Port Moody, BC**

Basement Floor:	1,307 sq. ft.
Main Floor:	1,351 sq. ft.
Upper Floor:	*1,262 sq. ft.
Total:	*3,920 sq. ft.

*Includes lower ceiling space.



UPPER FLOOR PLAN
FLOOR AREA: *1,262 sq.ft.



MONNET TYLER

604.931.4307

Royal LePage West

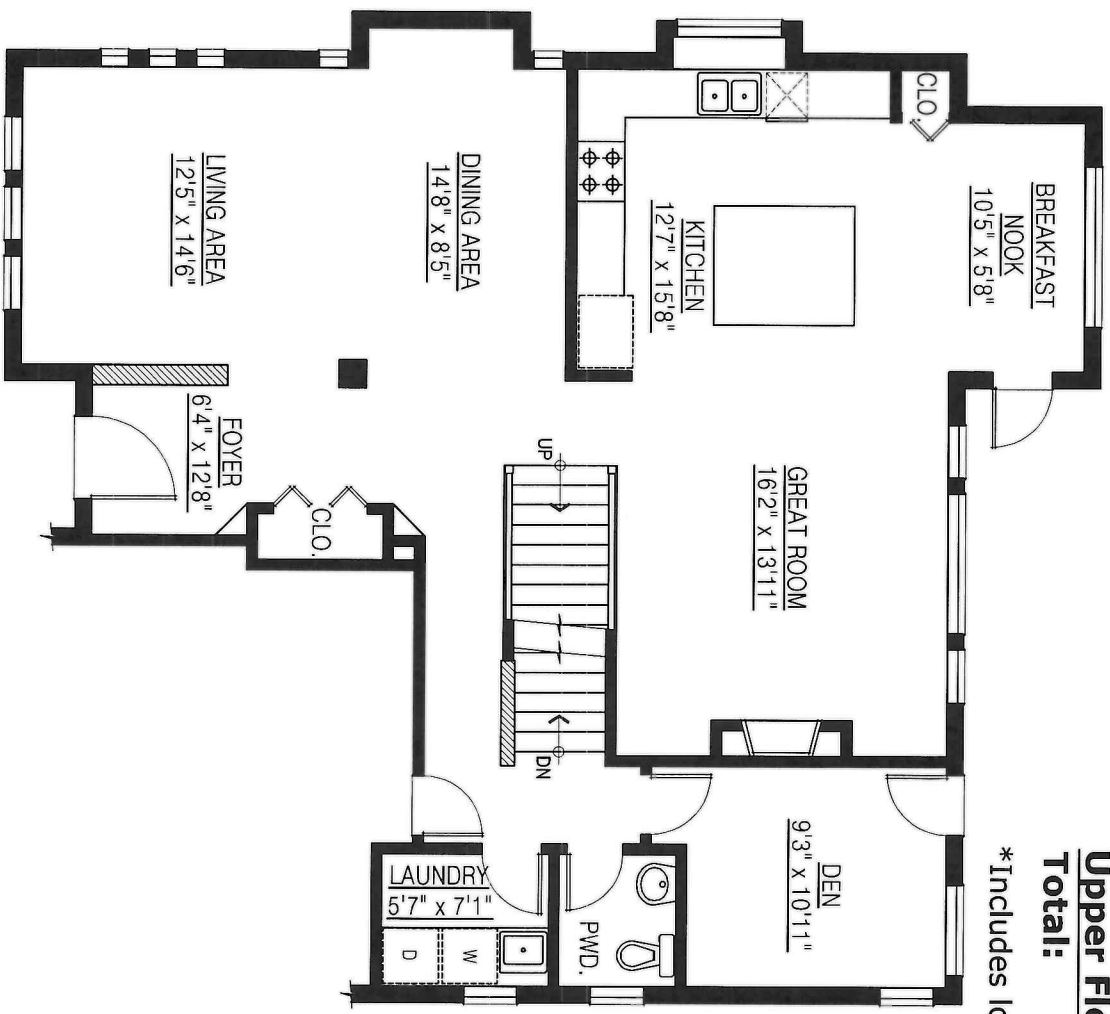
www.monnettyler.com

monnet@monnettyler.com

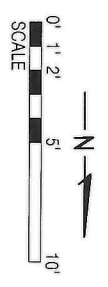
**42 Cliffwood Dr.
Port Moody, BC**

Basement Floor:	1,307 sq. ft.
Main Floor:	1,351 sq. ft.
Upper Floor:	*1,262 sq. ft.
Total:	*3,920 sq. ft.

*Includes lower ceiling space.



MAIN FLOOR PLAN
FLOOR AREA: 1,351 sq.ft.



MONNETTYLER

604.931.4307

Royal LePage West

www.monnettyler.com

monnet@monnettyler.com

**42 Clifford Dr.
Port Moody, BC**

Basement Floor:	1,307 sq. ft.
Main Floor:	1,351 sq. ft.
Upper Floor:	*1,262 sq. ft.
Total:	*3,920 sq. ft.

*Includes lower ceiling space.

