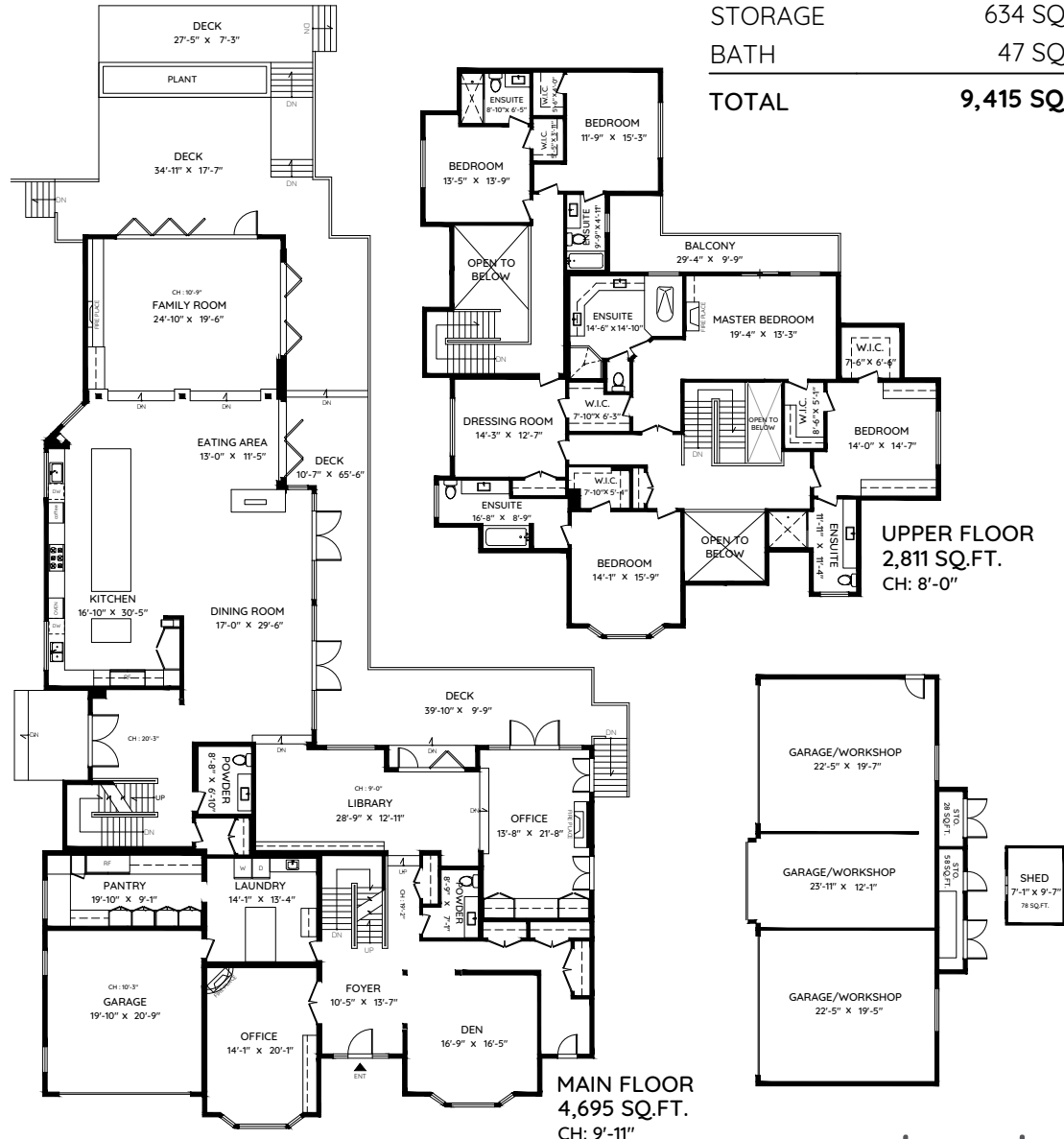
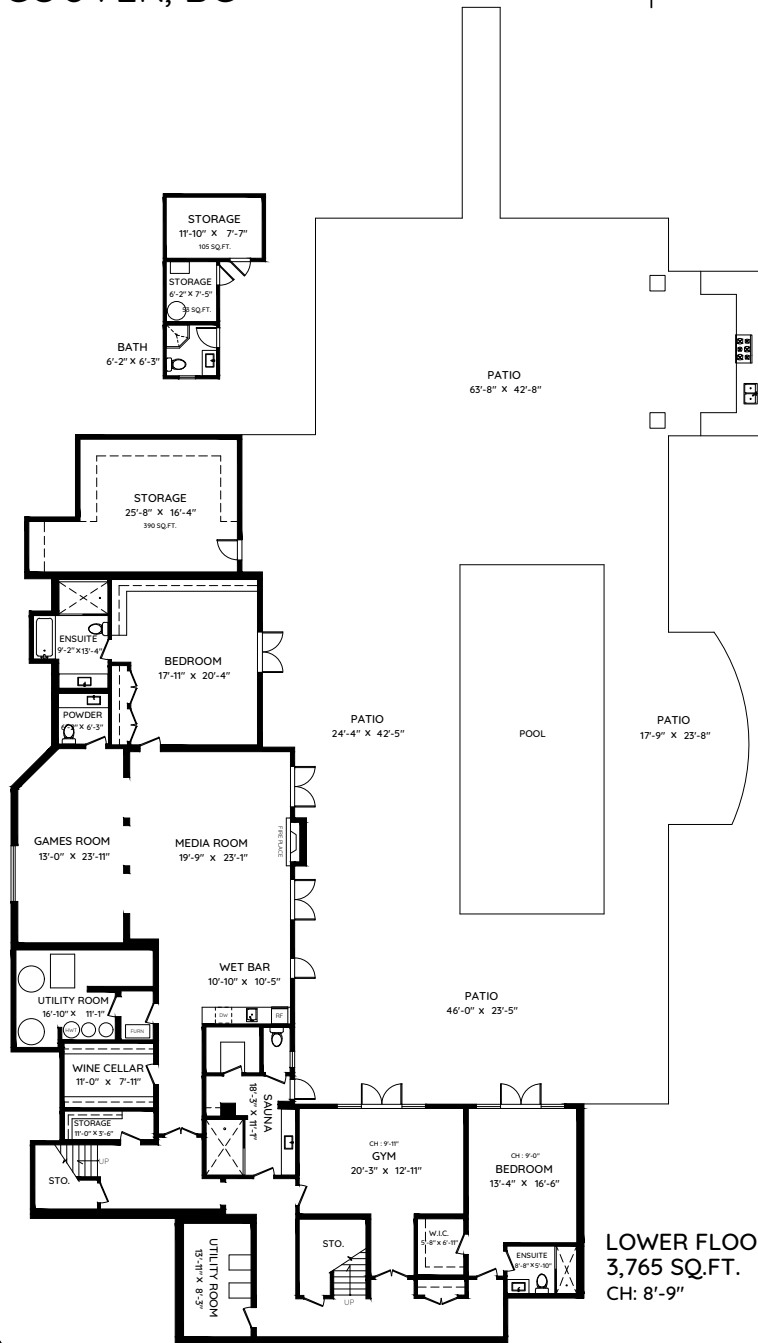


2870 SW MARINE DRIVE VANCOUVER, BC

ND NEACSU DENNER GROUP

MAIN	4,695 SQ.FT.	GARAGE	444 SQ.FT.
UPPER	2,811 SQ.FT.	GARAGE/WORKSHOP	1256 SQ.FT.
LOWER	3,765 SQ.FT.	PATIO	4937 SQ.FT.
TOTAL	11,271 SQ.FT.	DECK	1757 SQ.FT.
		BALCONY	179 SQ.FT.
		SHED	161 SQ.FT.
		STORAGE	634 SQ.FT.
		BATH	47 SQ.FT.
		TOTAL	9,415 SQ.FT.



The floor plan and the measurements are approximate within +/- 2% and are to be used for advertising usage only. May include unfinished area. Not suitable for architectural or construction. E&O Insured

