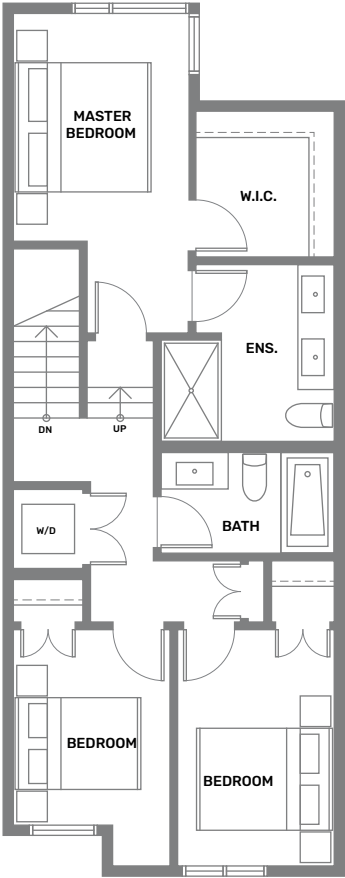
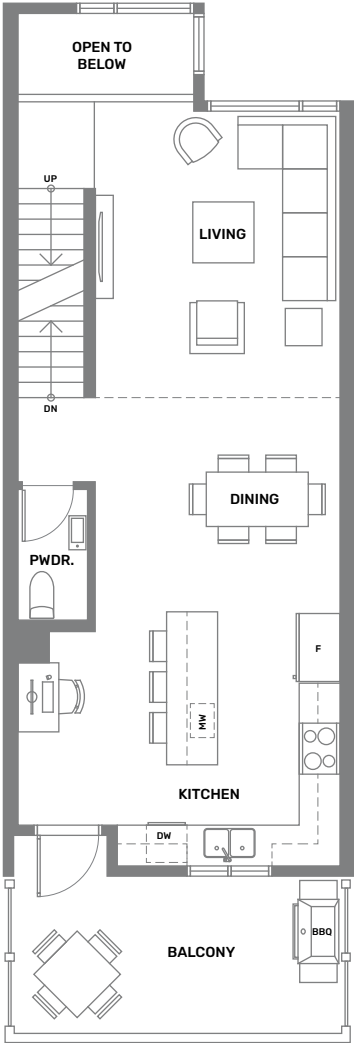
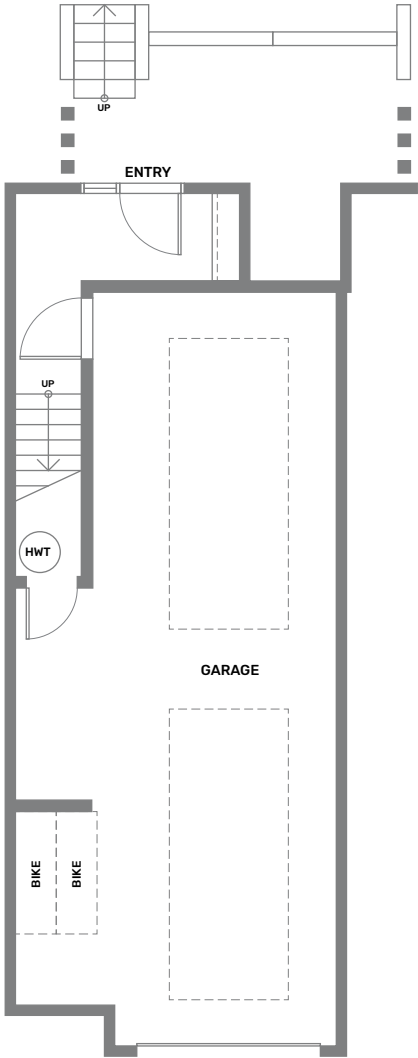
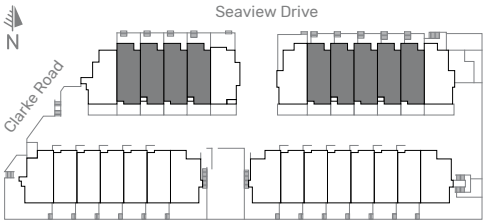


PLAN A1

3 BEDROOM | 2.5 BATH
1,414 SQUARE FEET

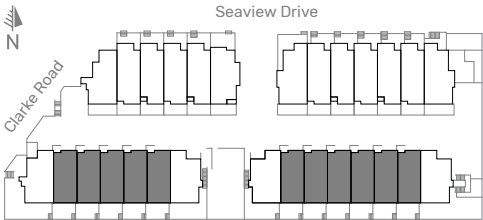
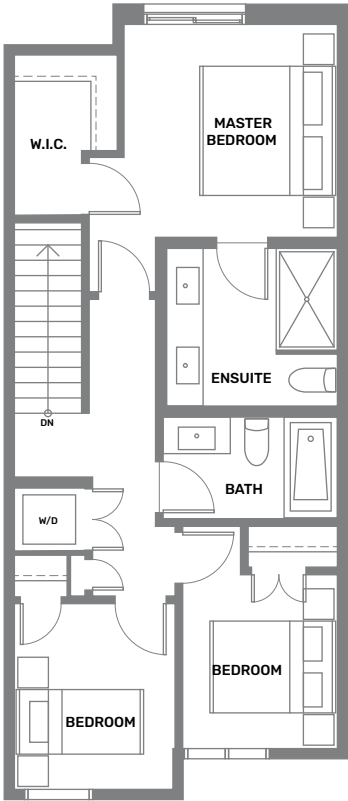
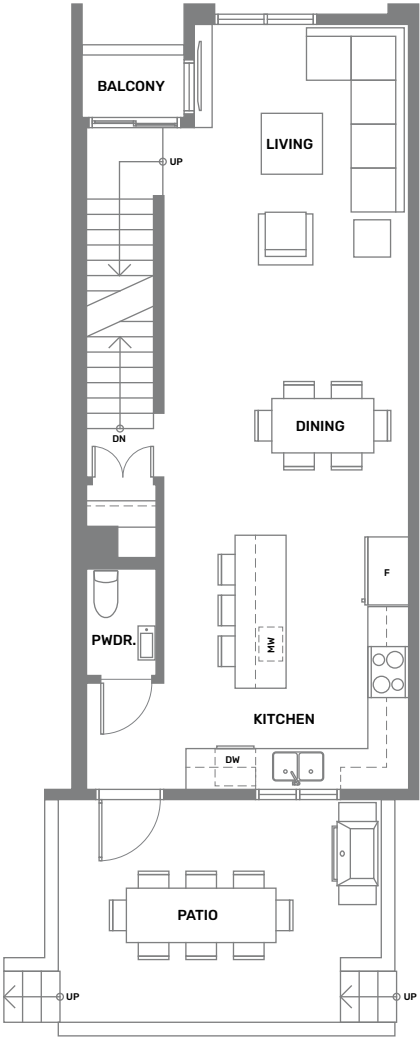
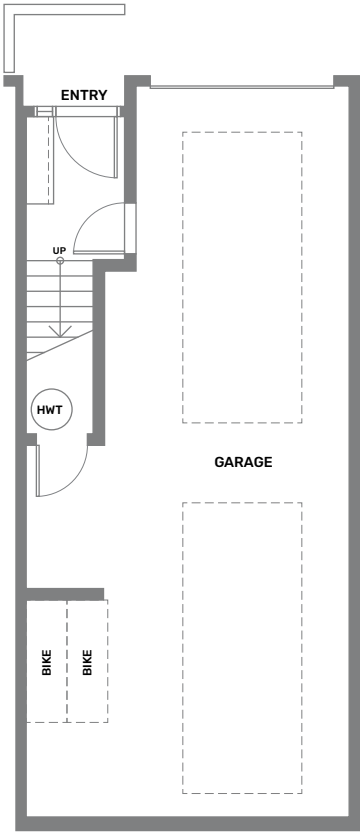


In our continuing effort to improve and maintain the high standard of the Cedar Ridge development, the developer reserves the right to modify or change plans, specifications, features and prices without notice. Materials may be substituted with equivalent or better at the developer's sole discretion. All dimensions and sizes are approximate and are based on architectural measurements. As slight variations may occur throughout the development please see architectural plans if material to your decision to purchase. Please see disclosure statement for specific offering details. E.&O.E.



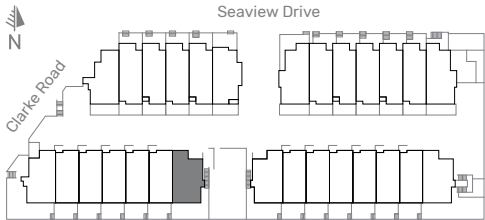
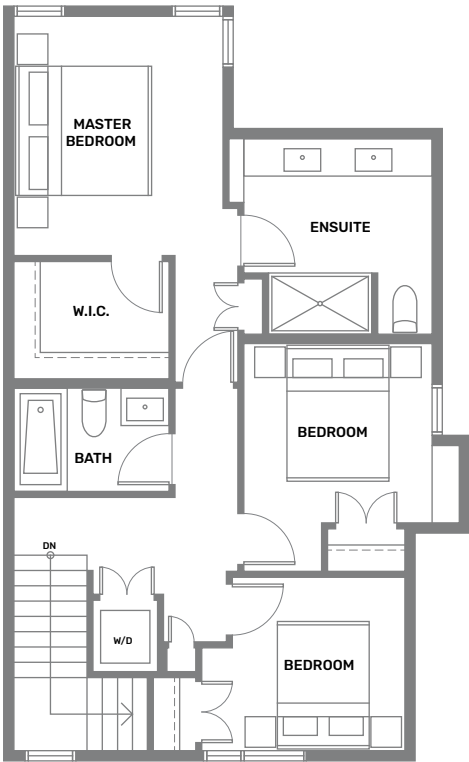
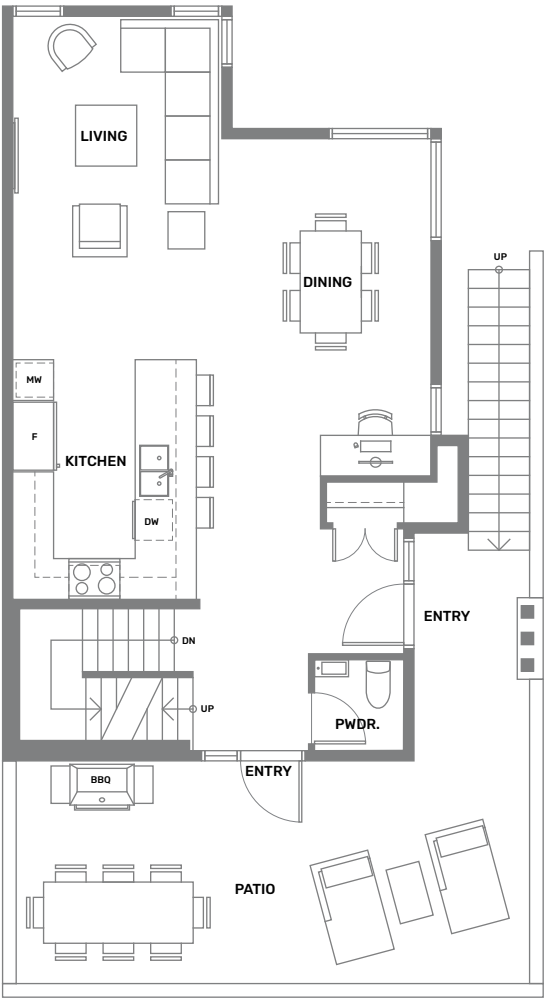
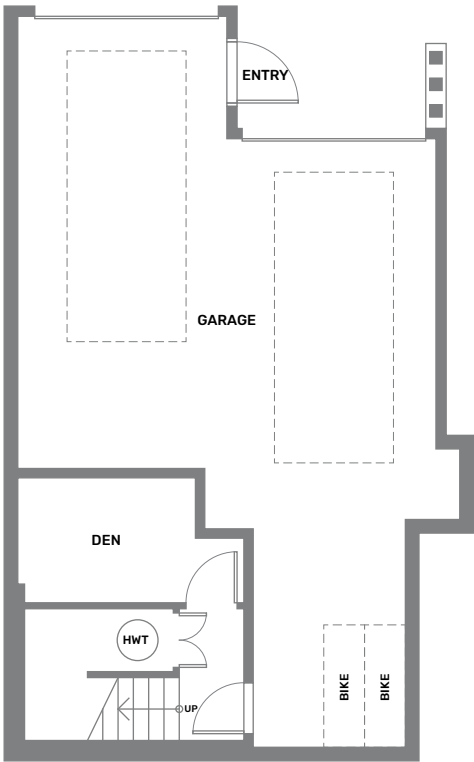
PLAN A2

3 BEDROOM | 2.5 BATH
1,304 SQUARE FEET



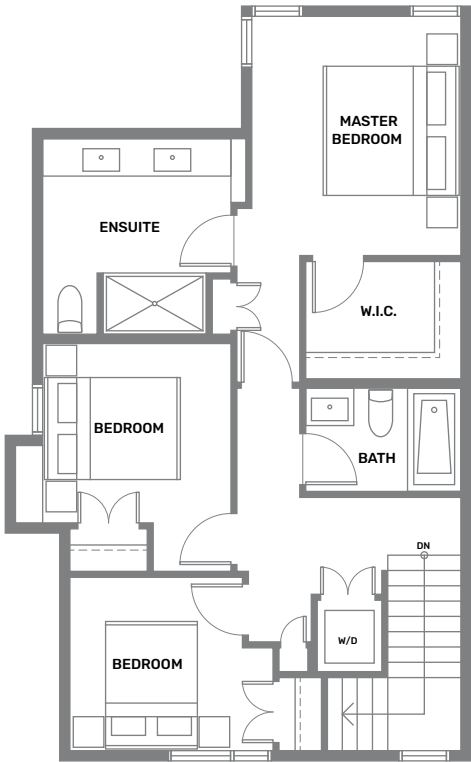
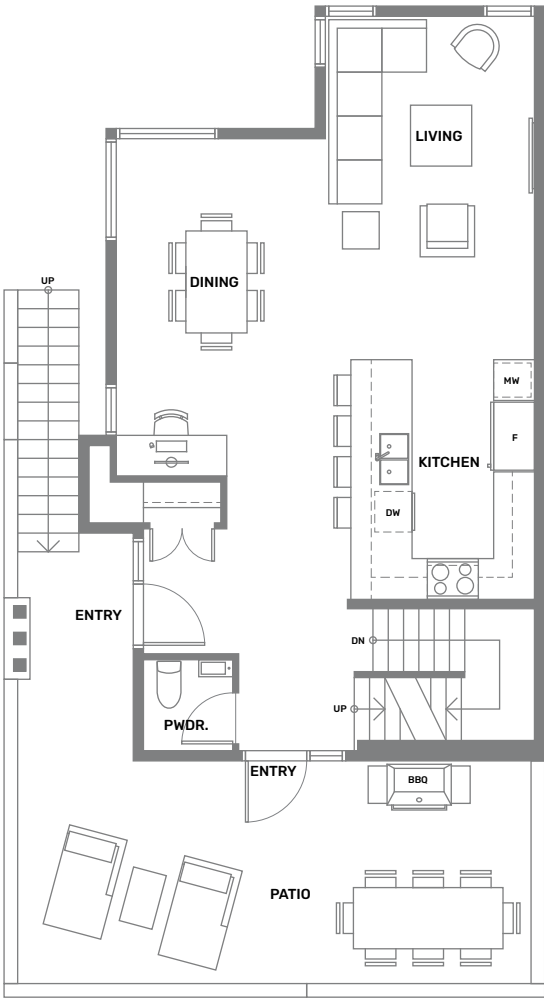
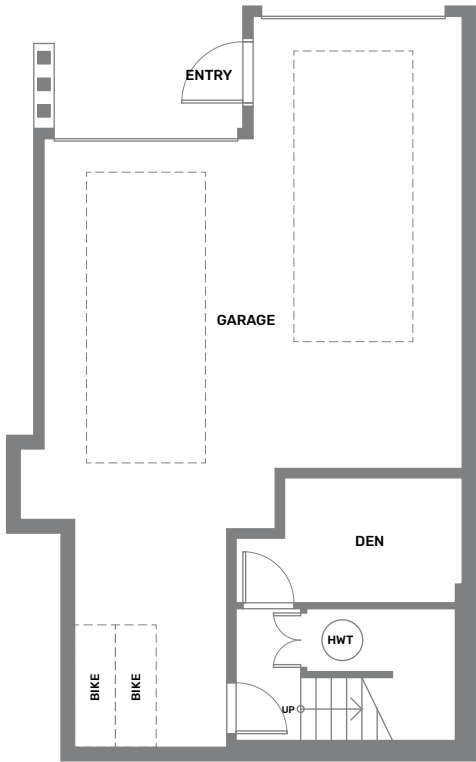
PLAN B2

3 BEDROOM + DEN | 2.5 BATH
1,602 SQUARE FEET



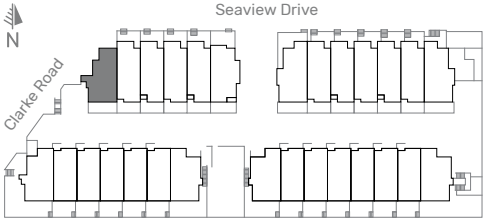
PLAN B2a

3 BEDROOM + DEN | 2.5 BATH
1,602 SQUARE FEET



PLAN C1

4 BEDROOM | 2.5 BATH
1,601 SQUARE FEET



PLAN C2

| 3 BEDROOM + DEN | 2.5 BATH
1,587 SQUARE FEET

