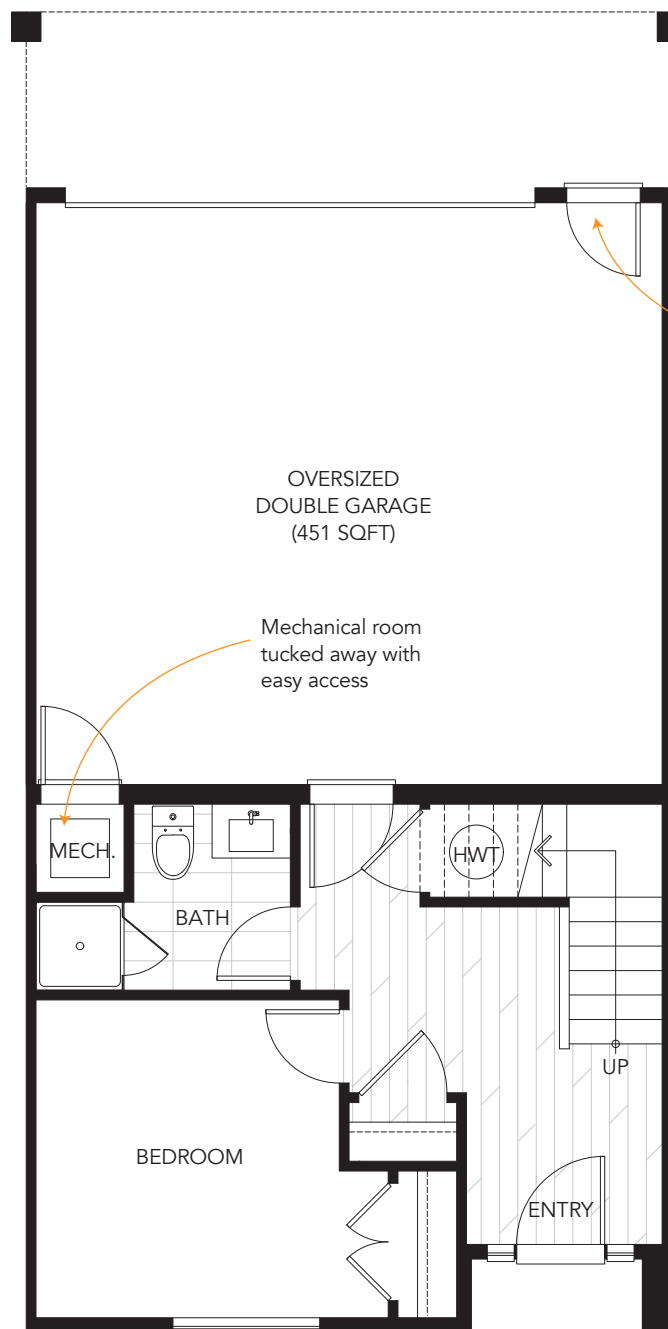
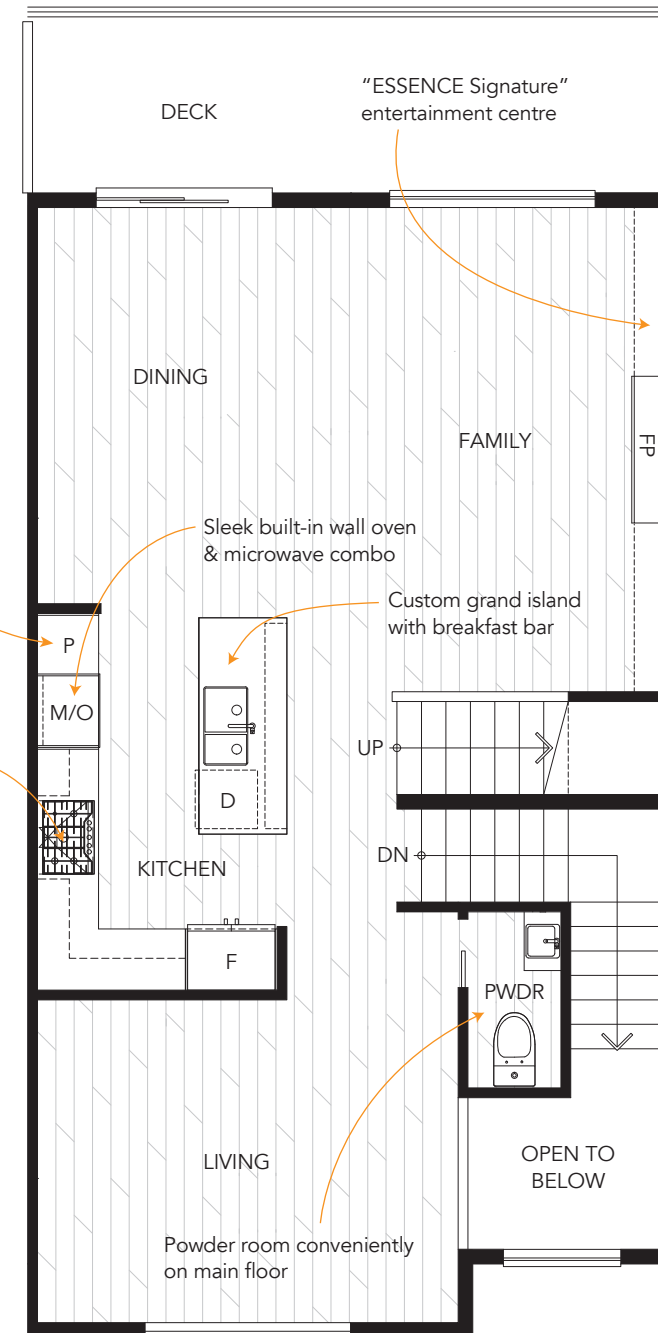


# TRIBUTE | Plan A

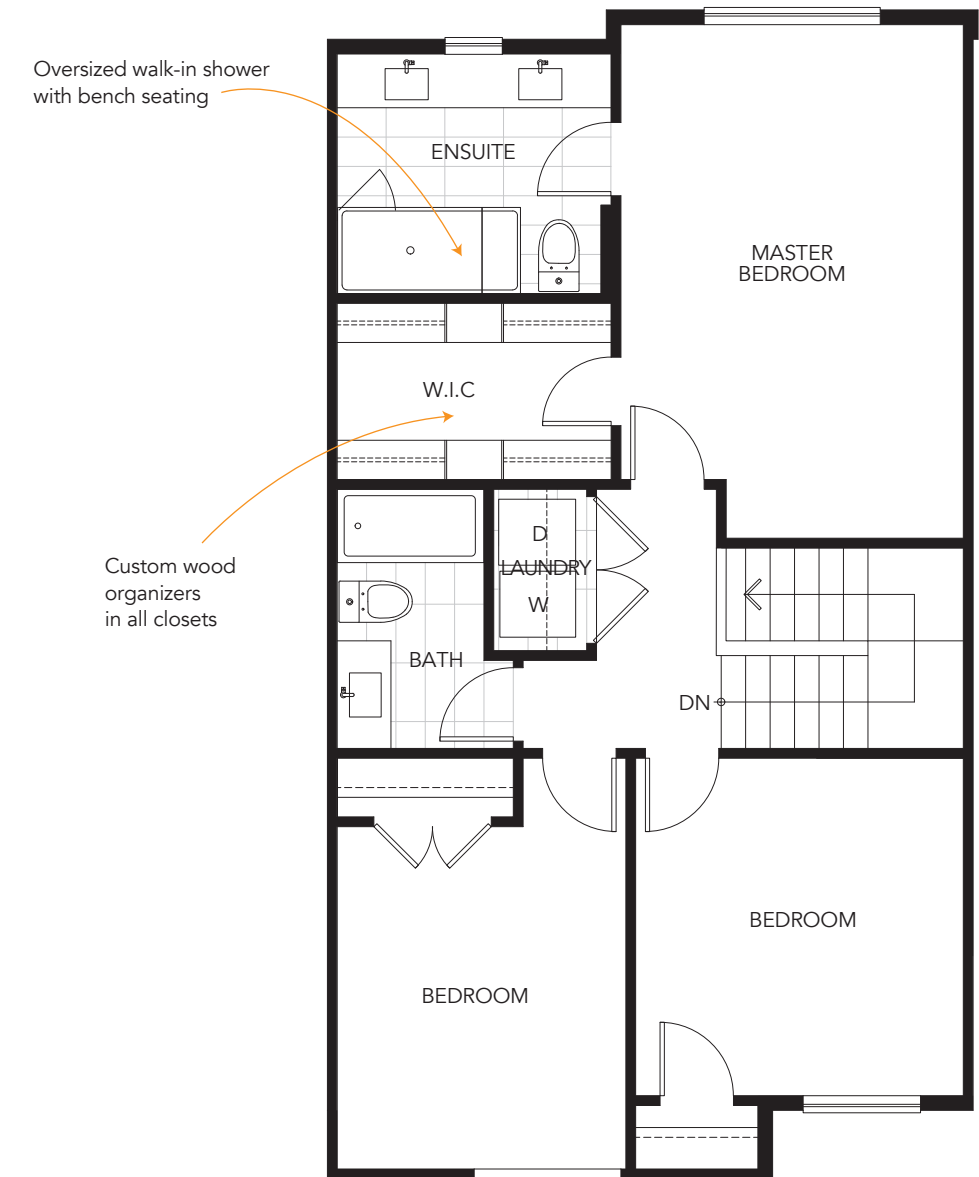
4 BEDROOM + 3.5 BATHS  
2,085 SQFT



**LOWER**  
390 SQFT



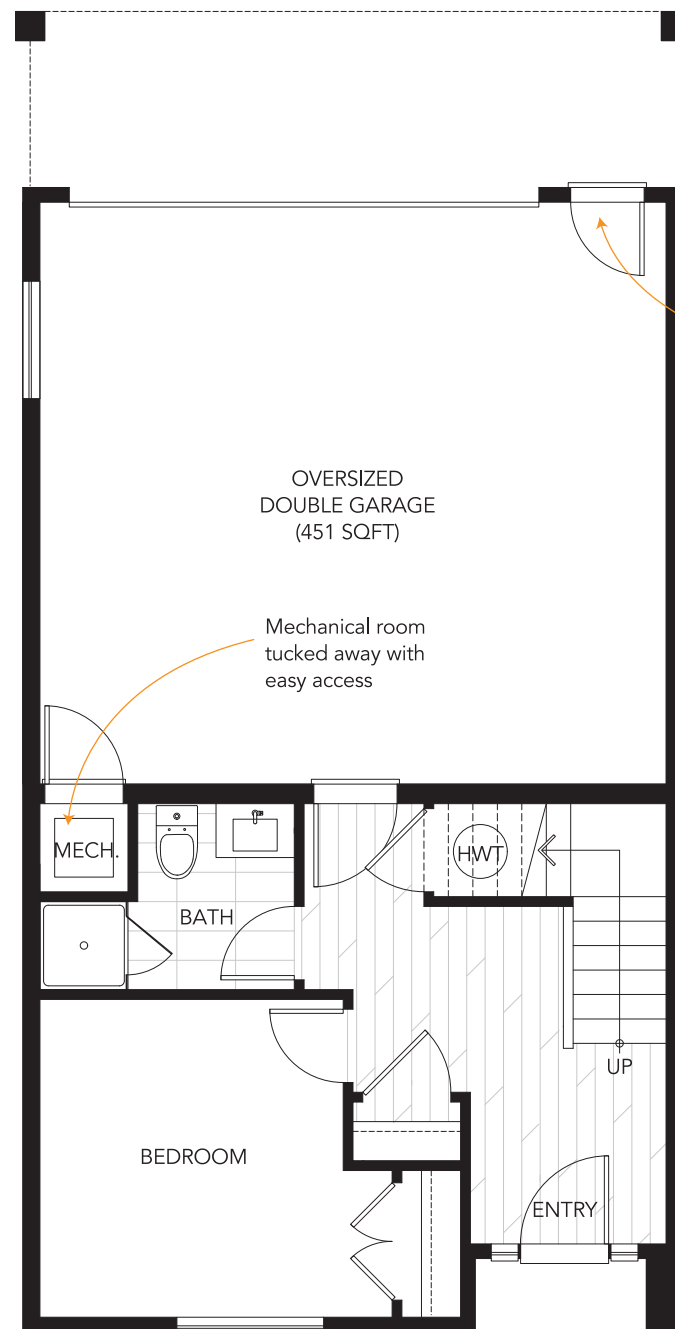
**MAIN**  
841 SQFT



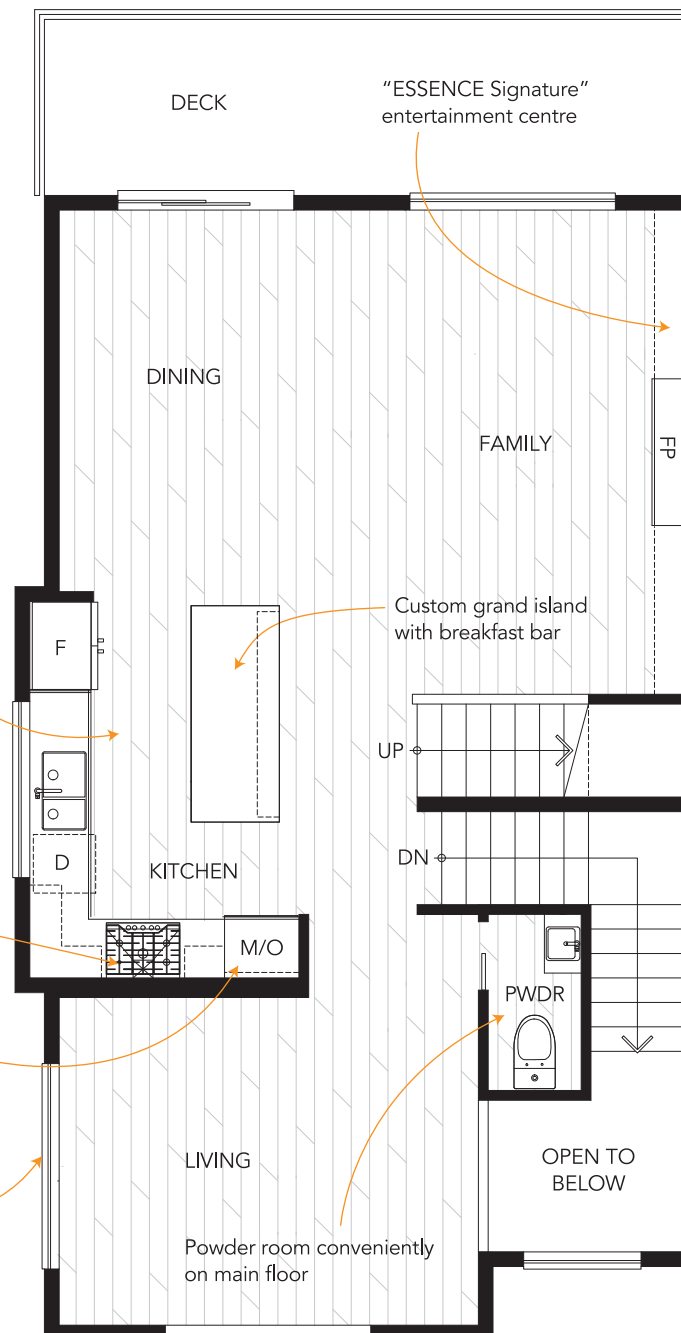
**UPPER**  
854 SQFT

# TRIBUTE | Plan A2

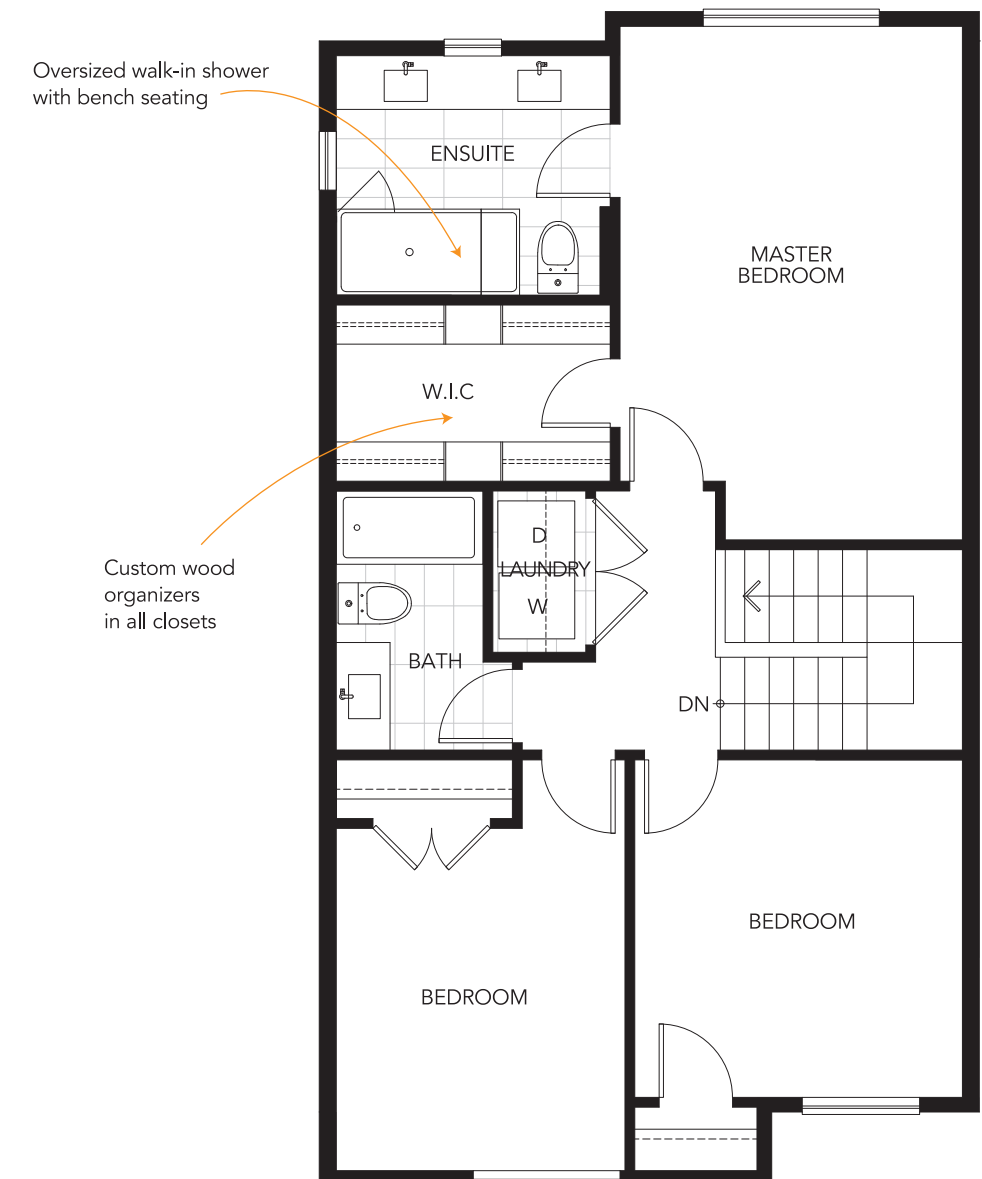
4 BEDROOM + 3.5 BATHS  
2,114 SQFT



**LOWER**  
393 SQFT



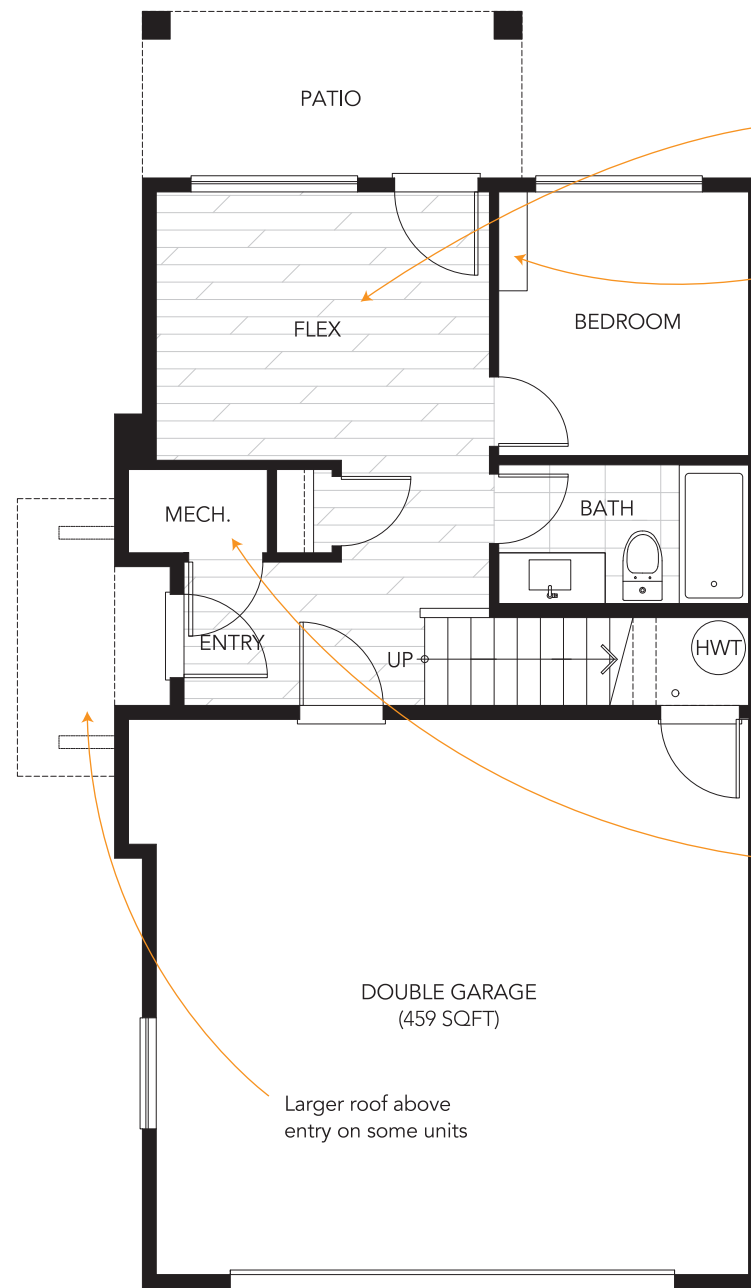
**MAIN**  
861 SQFT



**UPPER**  
860 SQFT

# TRIBUTE | Plan B

4 BEDROOM + FLEX, 3.5 BATHS  
2,255 SQFT



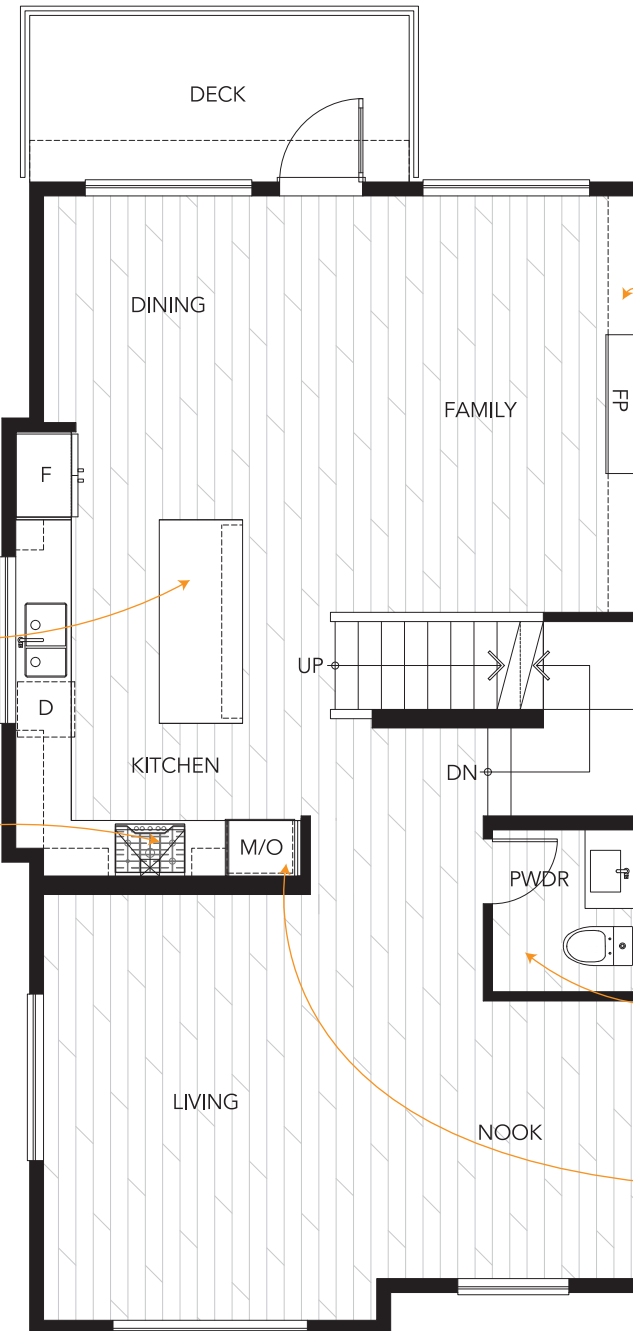
**LOWER**  
433 SQFT

Flex room perfect for a home office

Custom built-in wardrobe

Mechanical room tucked away with easy access

Larger roof above entry on some units



**MAIN**  
922 SQFT

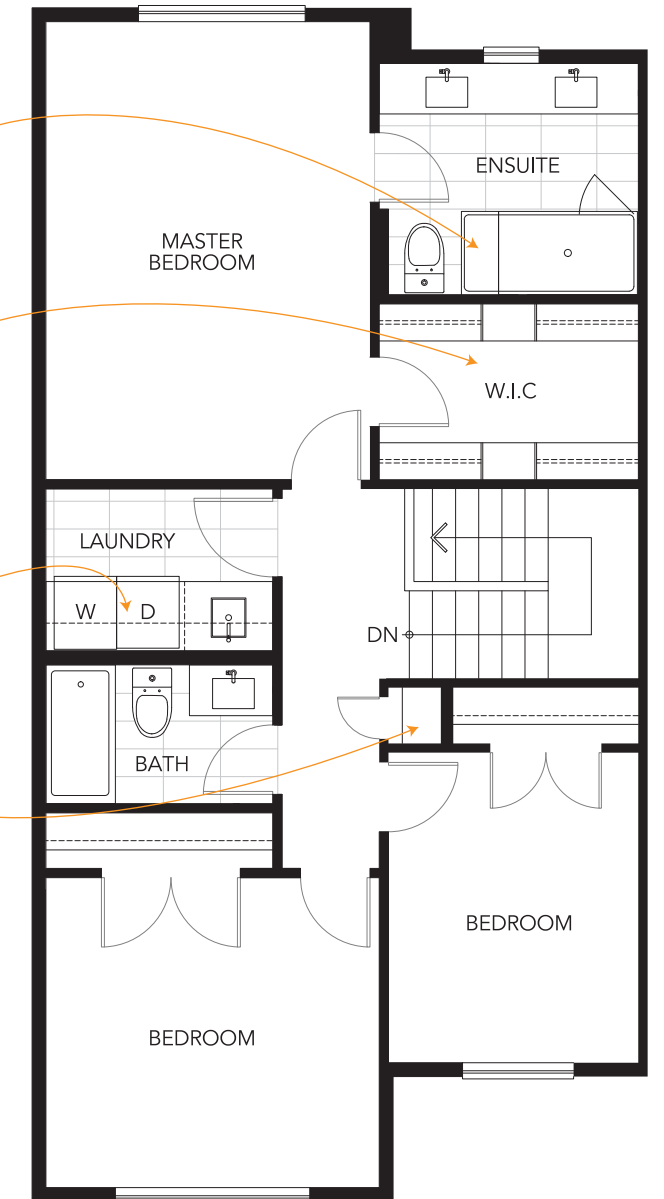
"ESSENCE Signature" entertainment centre

Custom grand island with breakfast bar

Gas cooktop

Powder room conveniently on main floor

Sleek built-in wall oven & microwave combo



**UPPER**  
900 SQFT

Oversized walk-in shower with bench seating

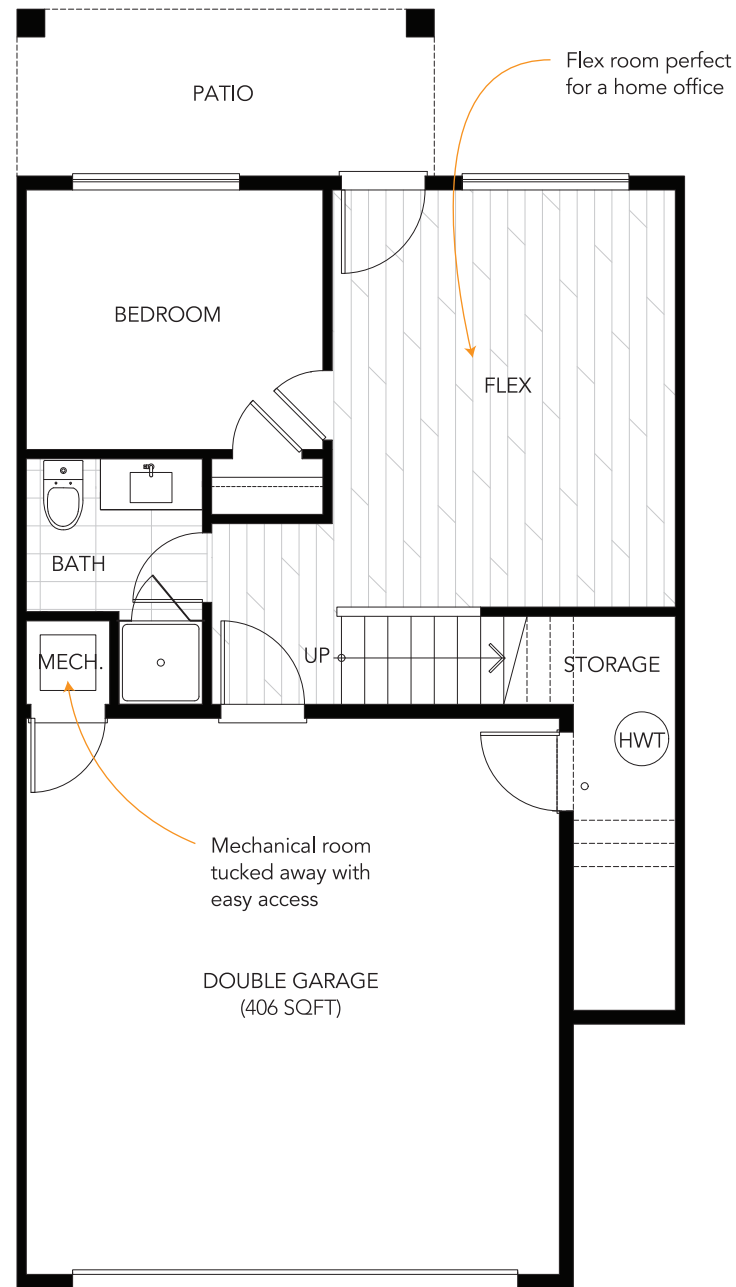
Custom wood organizers in all closets

Quartz countertop with built-in shelving above laundry

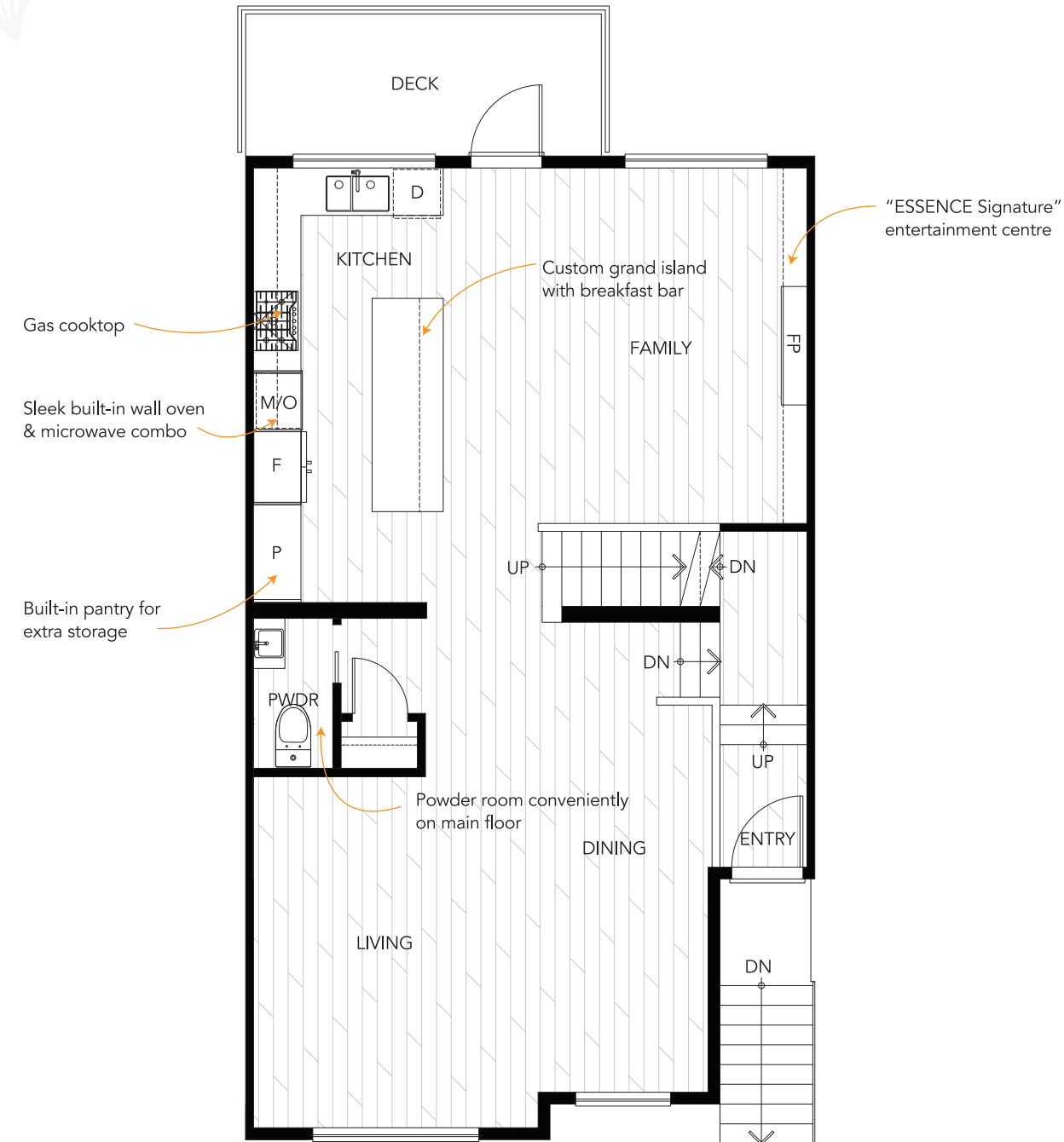
Linen closet

# TRIBUTE | Plan C

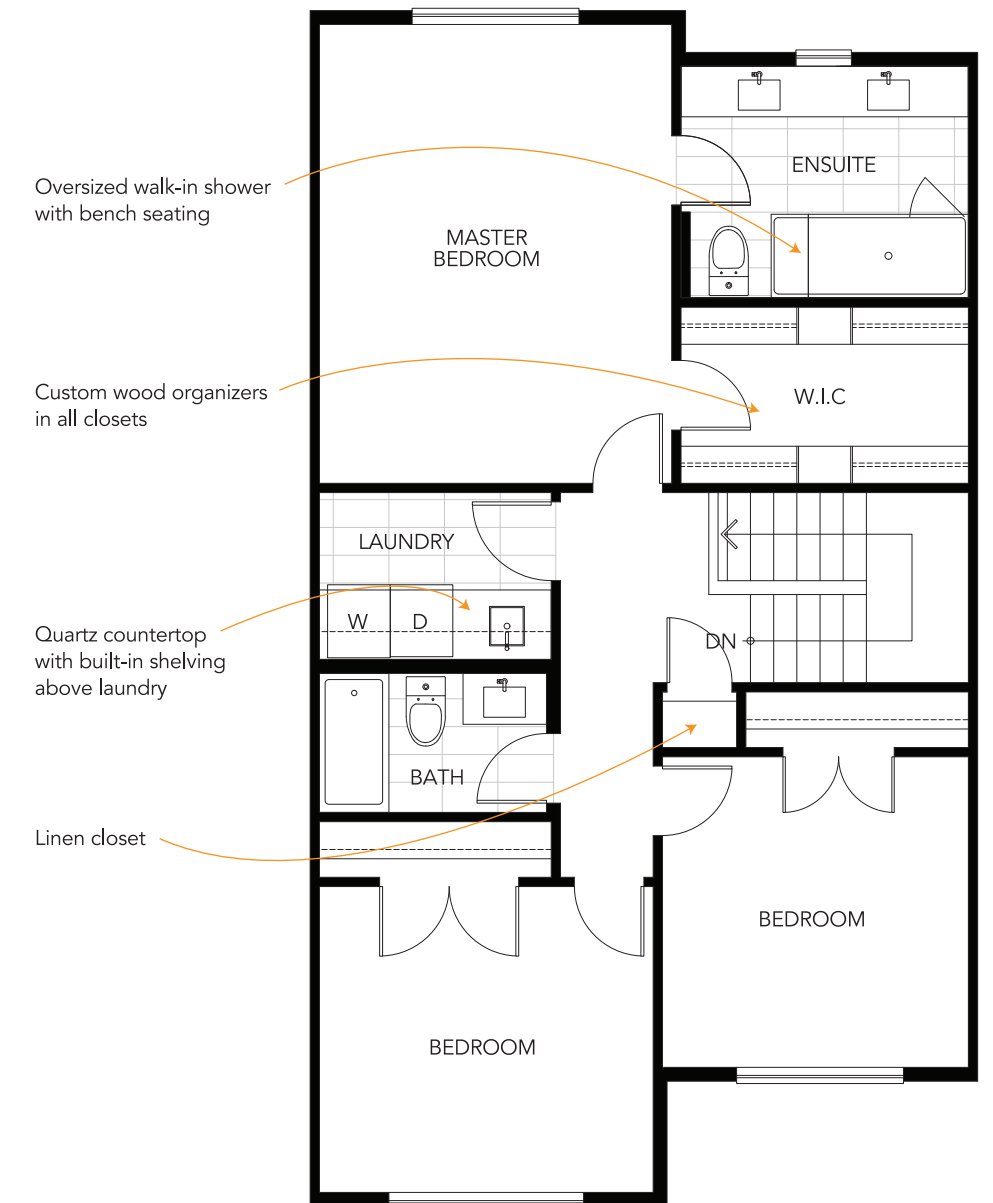
4 BEDROOM + FLEX, 3.5 BATHS  
2,427 SQFT



**LOWER**  
517 SQFT



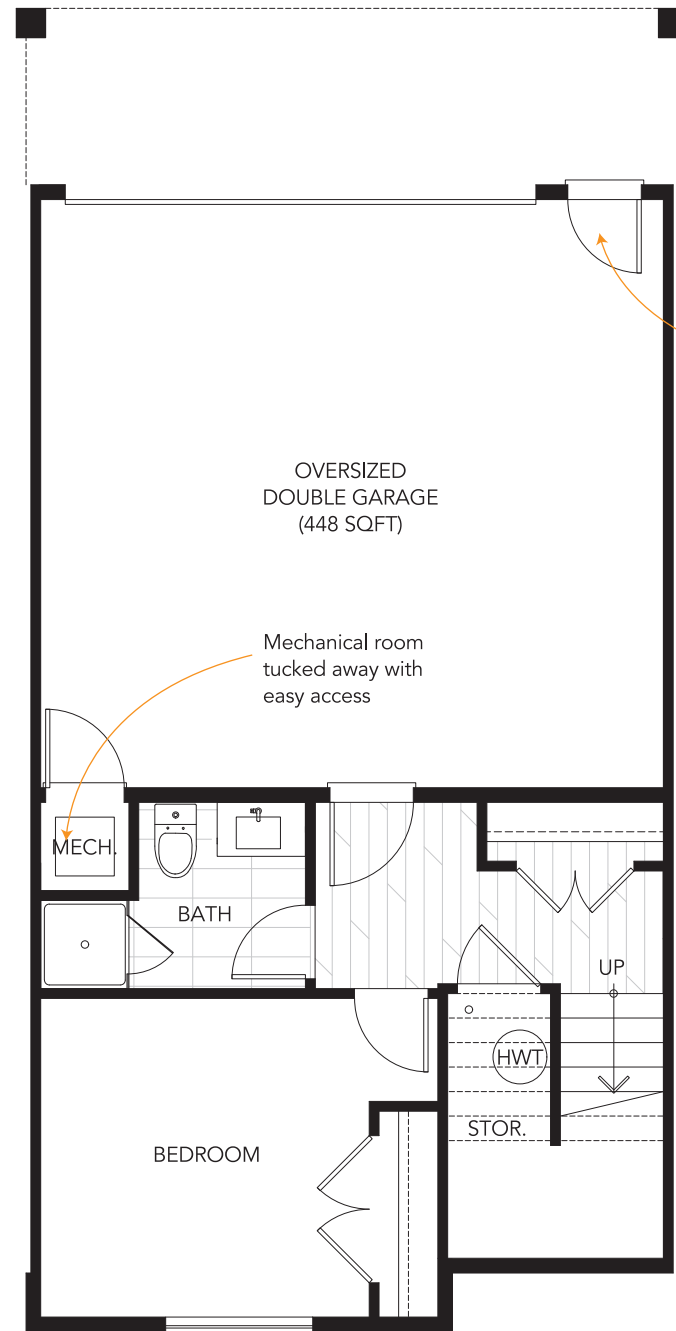
**MAIN**  
943 SQFT



**UPPER**  
967 SQFT

# TRIBUTE | Plan D

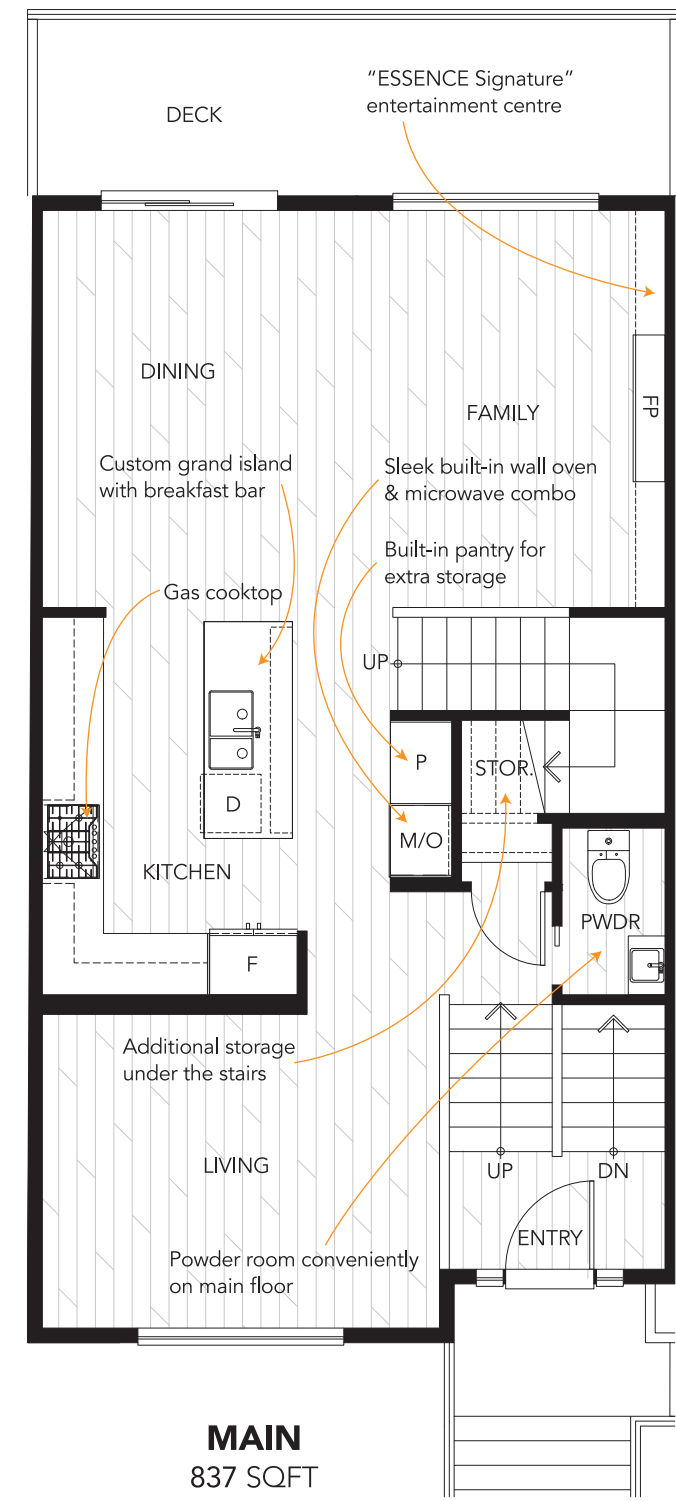
4 BEDROOM + 3.5 BATHS  
2,075 SQFT



**LOWER**  
389 SQFT

Conveniently located door for easy access

Mechanical room tucked away with easy access

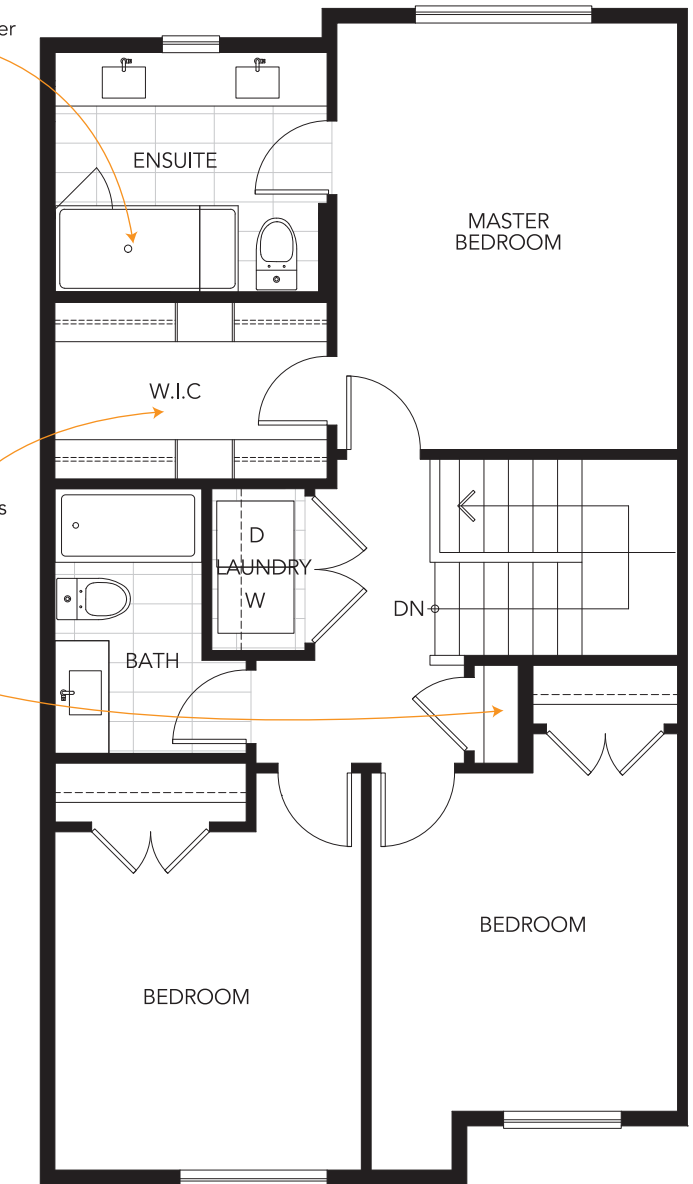


**MAIN**  
837 SQFT

Oversized walk-in shower with bench seating

Custom wood organizers in all closets

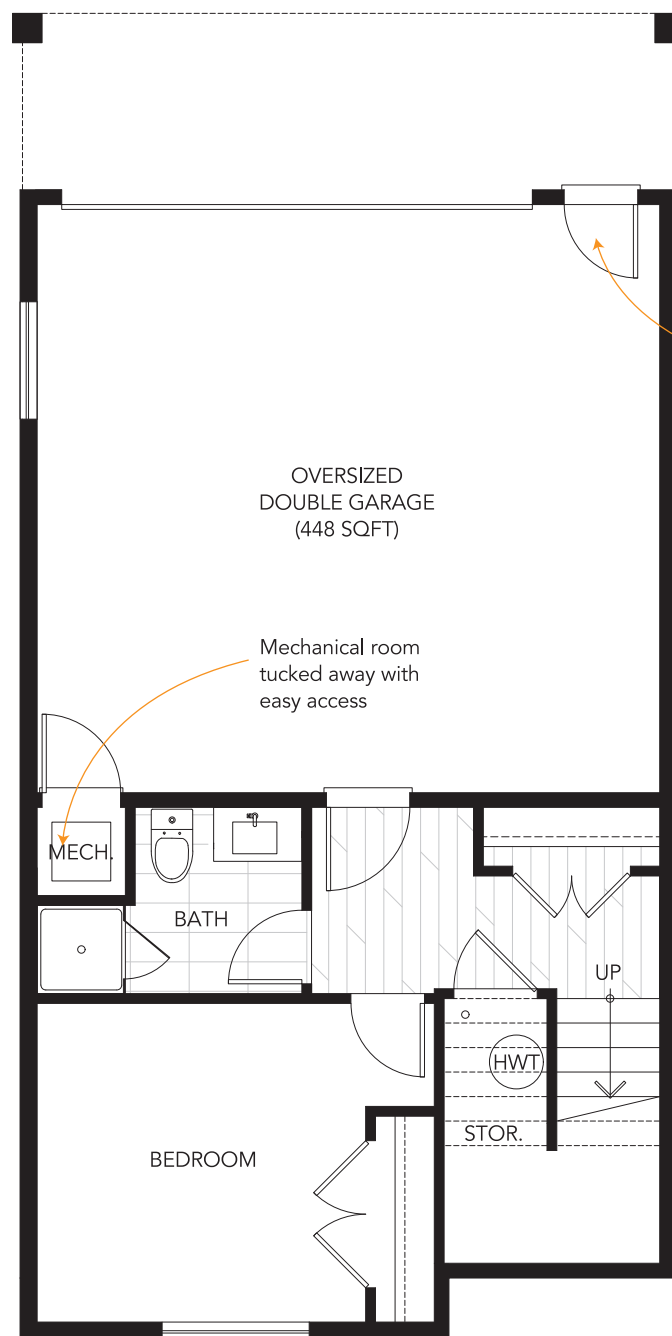
Linen closet



**UPPER**  
849 SQFT

# TRIBUTE | Plan D1

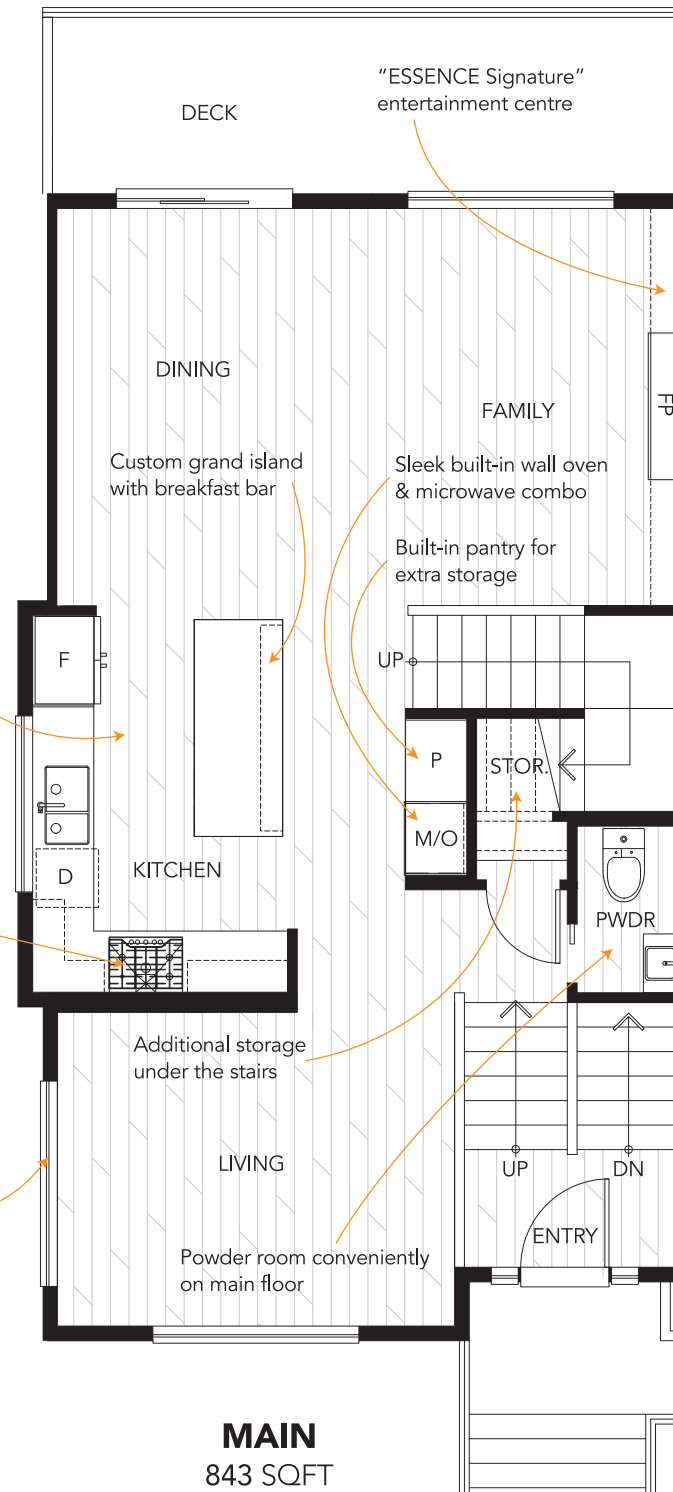
4 BEDROOM + 3.5 BATHS  
2,090 SQFT



**LOWER**  
392 SQFT

Conveniently located door for easy access

Mechanical room tucked away with easy access

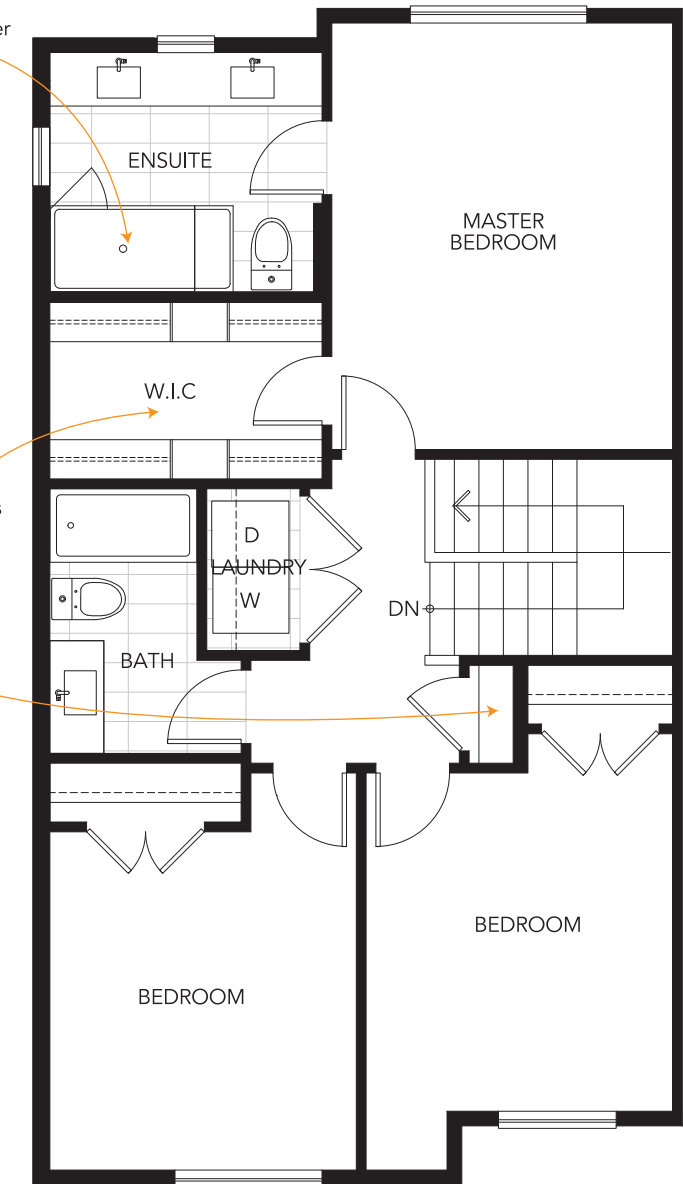


**MAIN**  
843 SQFT

Oversized walk-in shower with bench seating

Custom wood organizers in all closets

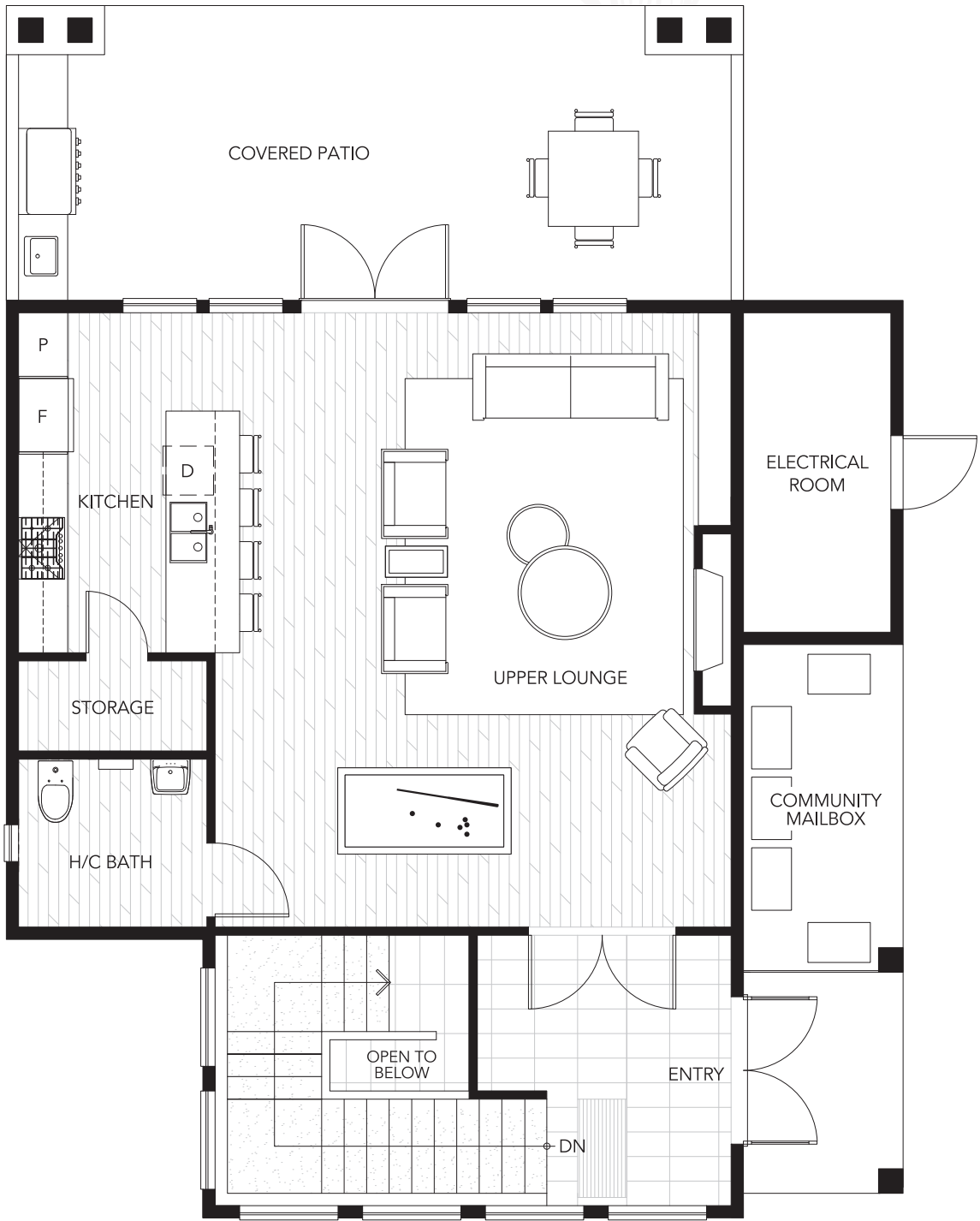
Linen closet



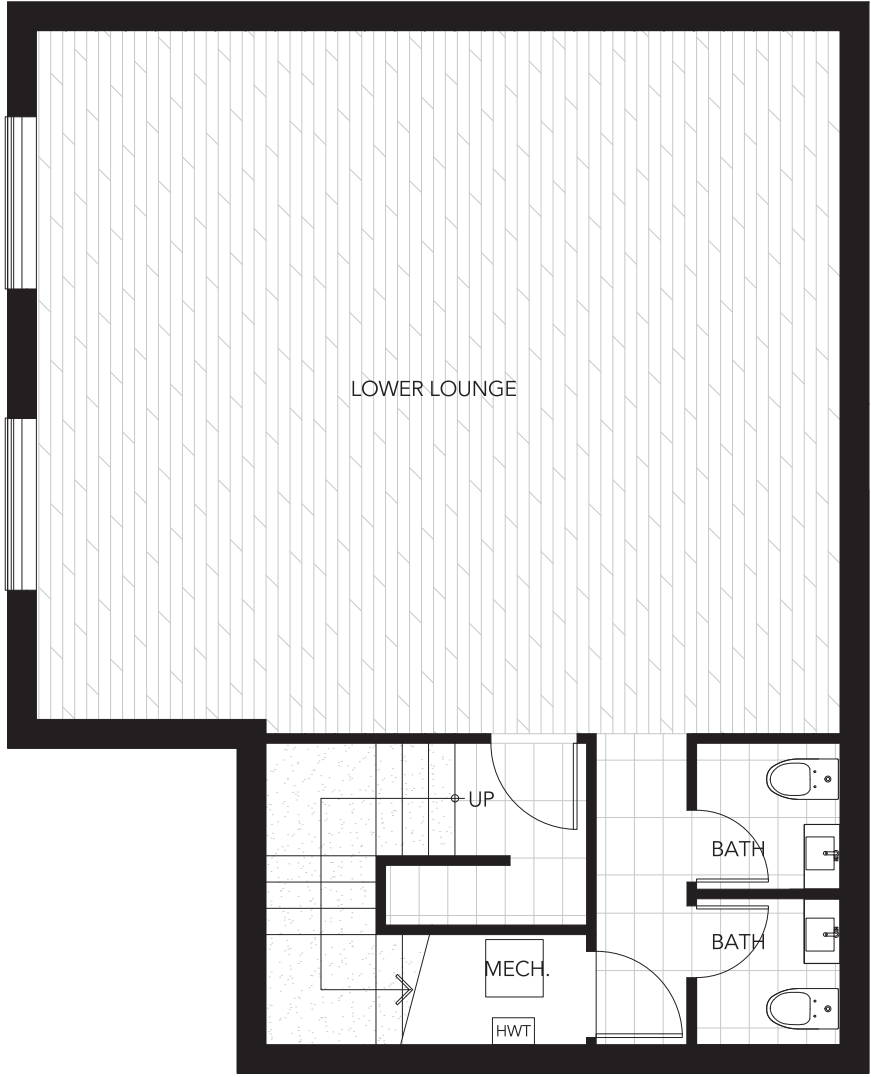
**UPPER**  
855 SQFT

# TRIBUTE | The Pavilion House

2 LOUNGES + FULLY FURNISHED INDOOR/OUTDOOR KITCHEN  
2,149 SQFT



**MAIN**  
1,120 SQFT



**BASEMENT**  
1,029 SQFT

In our continuing effort to improve and maintain the high standard of Parc Central development, the developer reserves the right to modify or change plans, specifications, features and prices without notice. Materials may be substituted with equivalent or better at the developer's sole discretion. All dimensions and sizes are approximate and are based on architectural measurements. As reverse and/or mirrored plans occur throughout the development, please see architectural plans. Please refer to disclosure statement for specific offering details. E.&O.E.