

VERDI

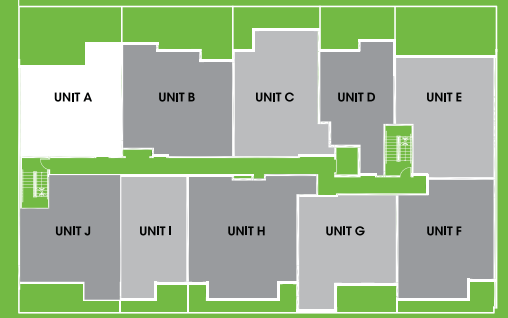
TYPE A

2 Bedroom + Den

Total Area 1008 sq ft

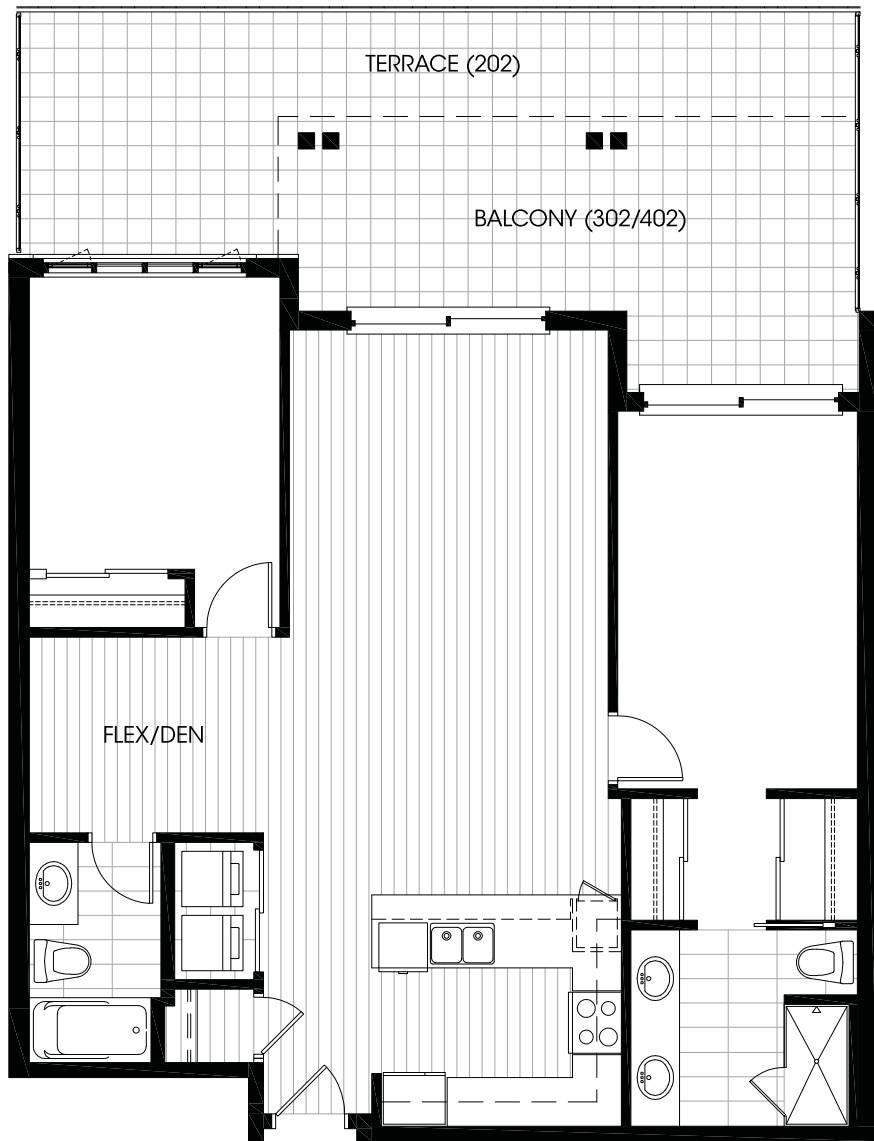
- Unit 201
- Unit 301
- Unit 401

Level 2 to 4



HASTINGS STREET

The builder reserves the right to change floorplans, elevations, specifications and prices without notice. Square footage as noted are approximations of each individual unit. The purchaser is responsible for verification of the unit layout and square footages. All renderings, floorplans, models and maps are artist's conceptions and not intended to be an actual depiction of buildings or landscaping. Floorplans may vary. Ask a salesperson for details. L&L, Inc.

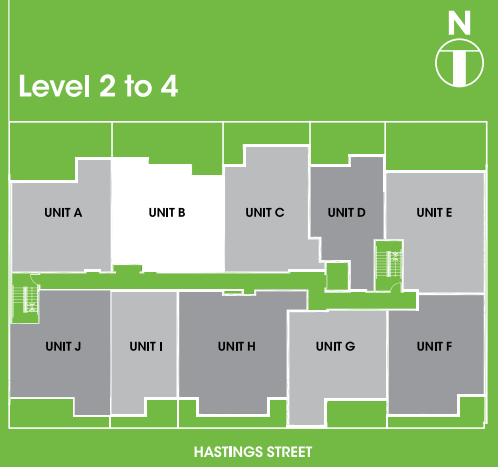


VERDI

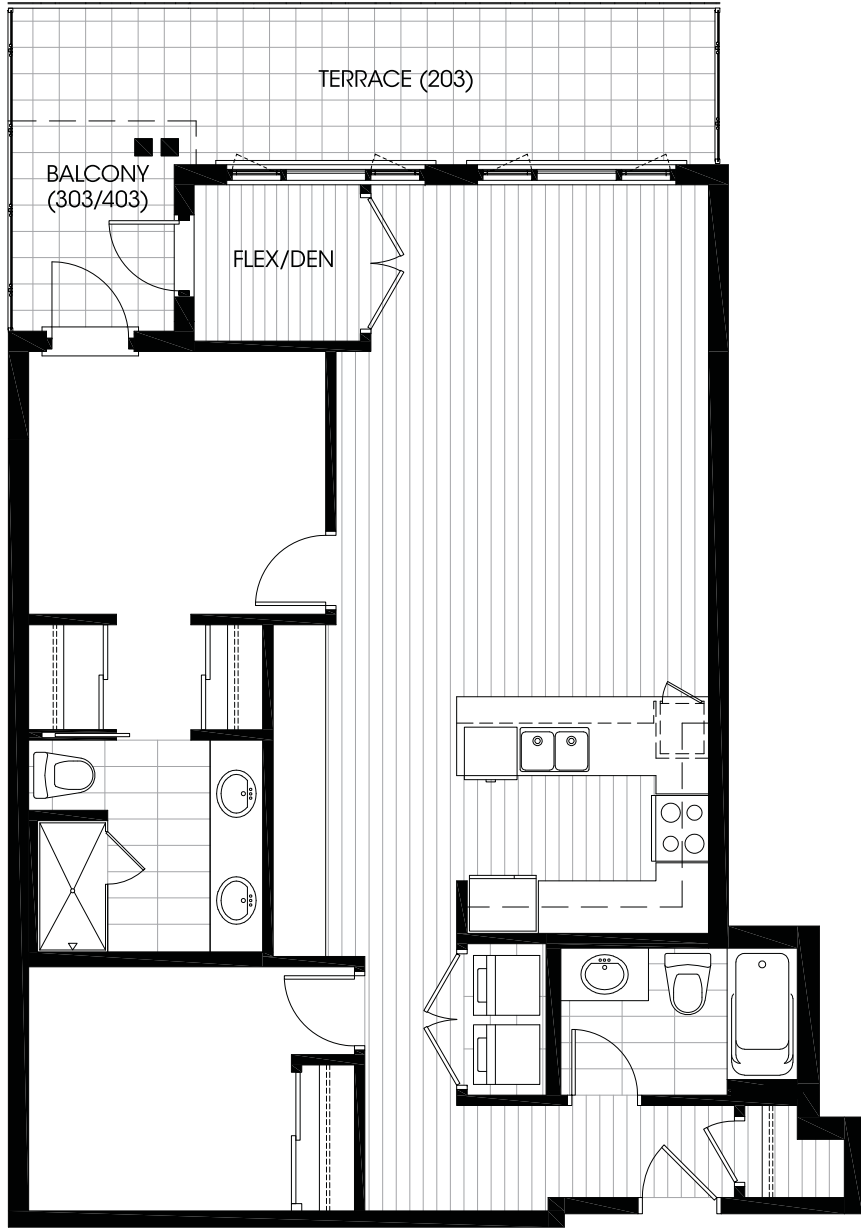
TYPE B

2 Bedroom + Den

Total Area	1140 sq ft
Unit	202
Unit	302
Unit	402



The builder reserves the right to change floorplans, elevations, specifications and prices without notice. Square footage as noted are approximations of each individual unit. The purchaser is responsible for verification of this unit layout and square footages. All renderings, floorplans, models and maps are artist's conceptions and not intended to be an actual depiction of buildings or landscaping. Floorplans may vary. Ask a salesperson for details. C.B.C.E.



VERDI

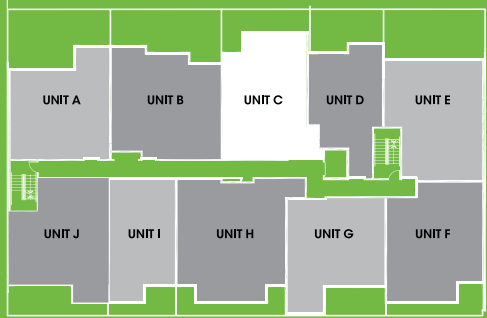
TYPE C

2 Bedroom + Den

Total Area 1072 sq ft

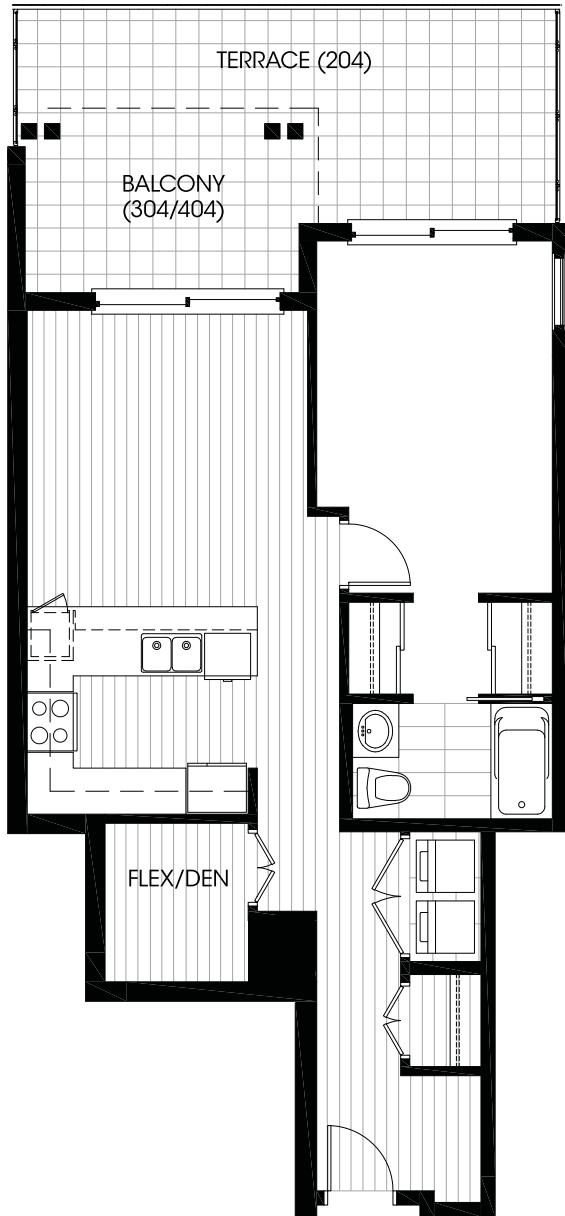
- Unit 203
- Unit 303
- Unit 403

Level 2 to 4



HASTINGS STREET

The builder reserves the right to change floorplans, elevations, specifications and prices without notice. Square footage as noted are approximations of each individual unit. The purchaser is responsible for verification of the unit layout and square footage. All renderings, floorplans, models and maps are artist's conceptions and not intended to be an actual depiction of buildings or landscaping. Floorplans may vary. Ask a salesperson for details. E&OE.



VERDI

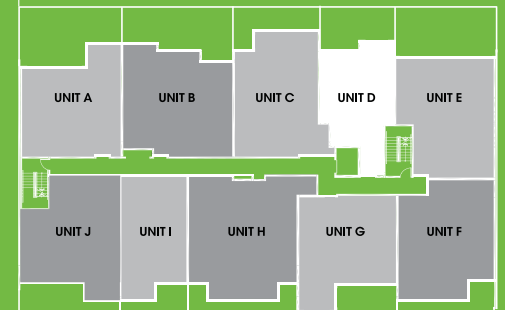
TYPE D

1 Bedroom + Den

Total Area 770 sq ft

- Unit 204
- Unit 304
- Unit 404

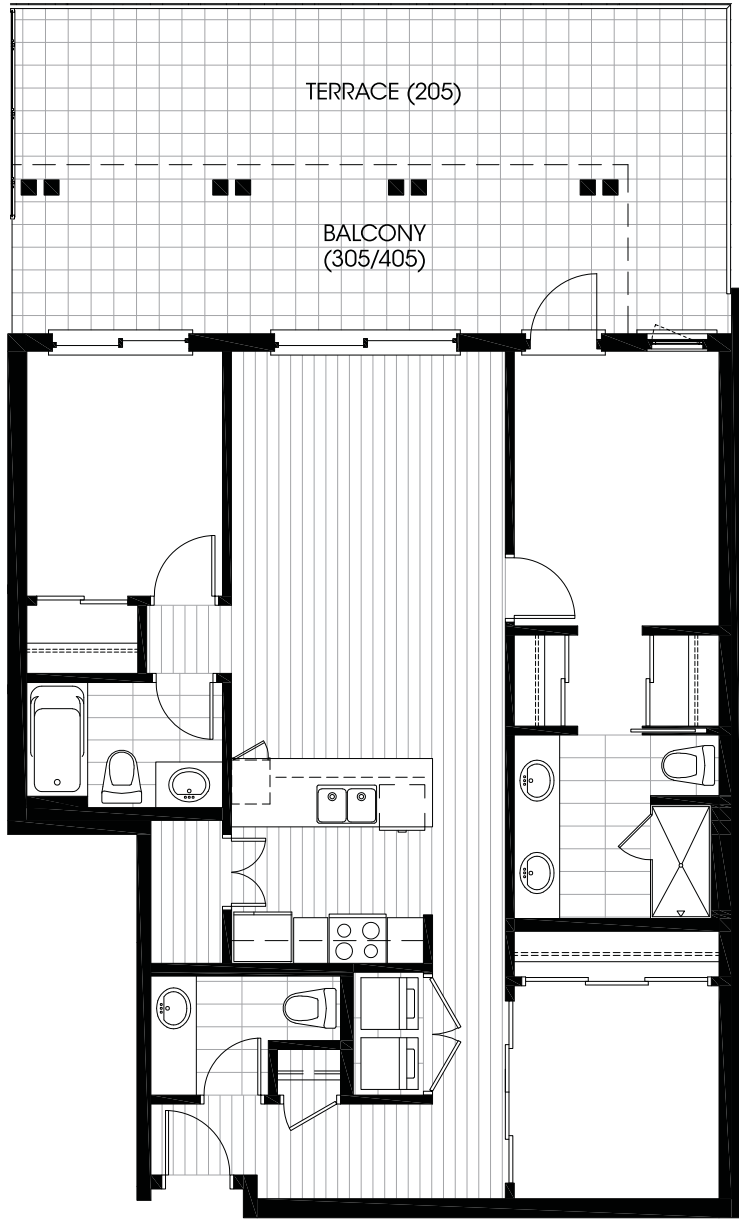
Level 2 to 4



HASTINGS STREET

* ADAPTABLE UNIT IF NECESSARY

The builder reserves the right to change floorplans, elevations, specifications and prices without notice. Square footage as noted are approximations of each individual unit. The purchaser is responsible for verification of the unit layout and square footage. All renderings, floorplans, models and maps are artist's conceptions and not intended to be an actual depiction of buildings or landscaping. Floorplans may vary. Ask a salesperson for details. E&OE.



VERDI

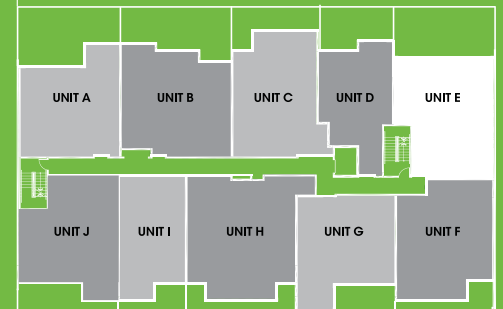
TYPE E

3 Bedroom

Total Area 1131 sq ft

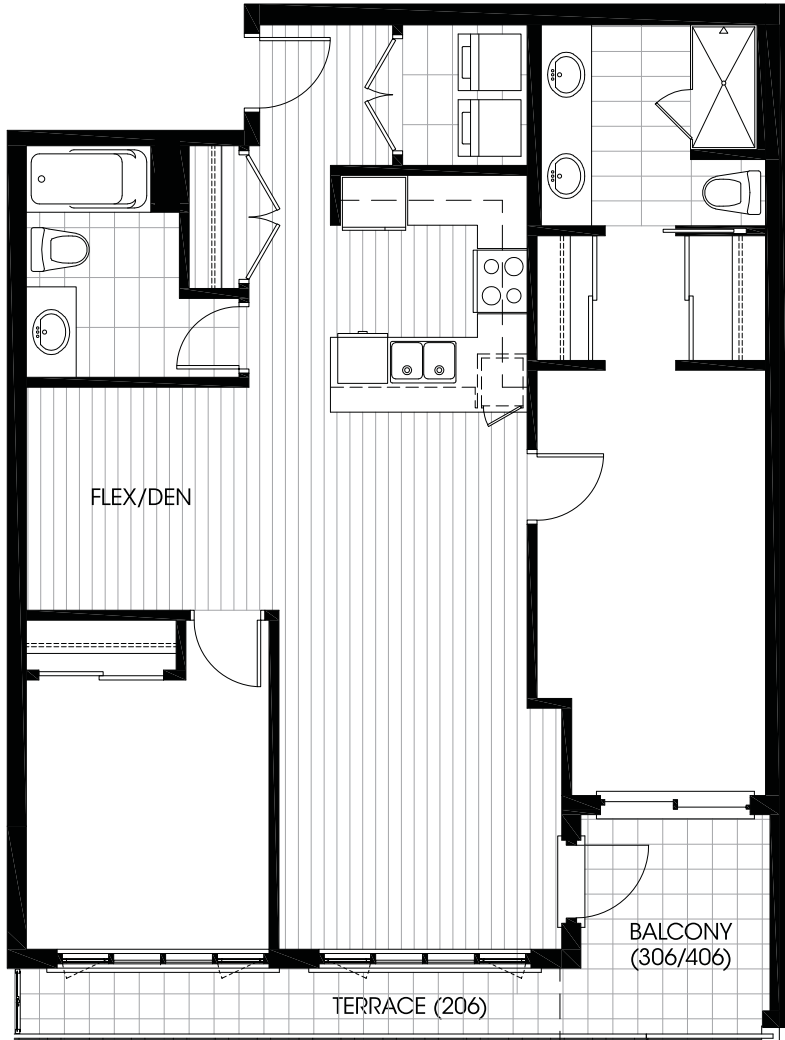
- Unit 205
- Unit 305
- Unit 405

Level 2 to 4



HASTINGS STREET

The builder reserves the right to change floorplans, elevations, specifications and prices without notice. Square footage as noted are approximations of each individual unit. The purchaser is responsible for verification of the unit layout and square footages. All renderings, floorplans, models and maps are artist's conceptions and not intended to be an actual depiction of buildings or landscaping. Floorplans may vary. Ask a salesperson for details. E.U.C.E.



VERDI

TYPE F

2 Bedroom + Den

Total Area 1097 sq ft

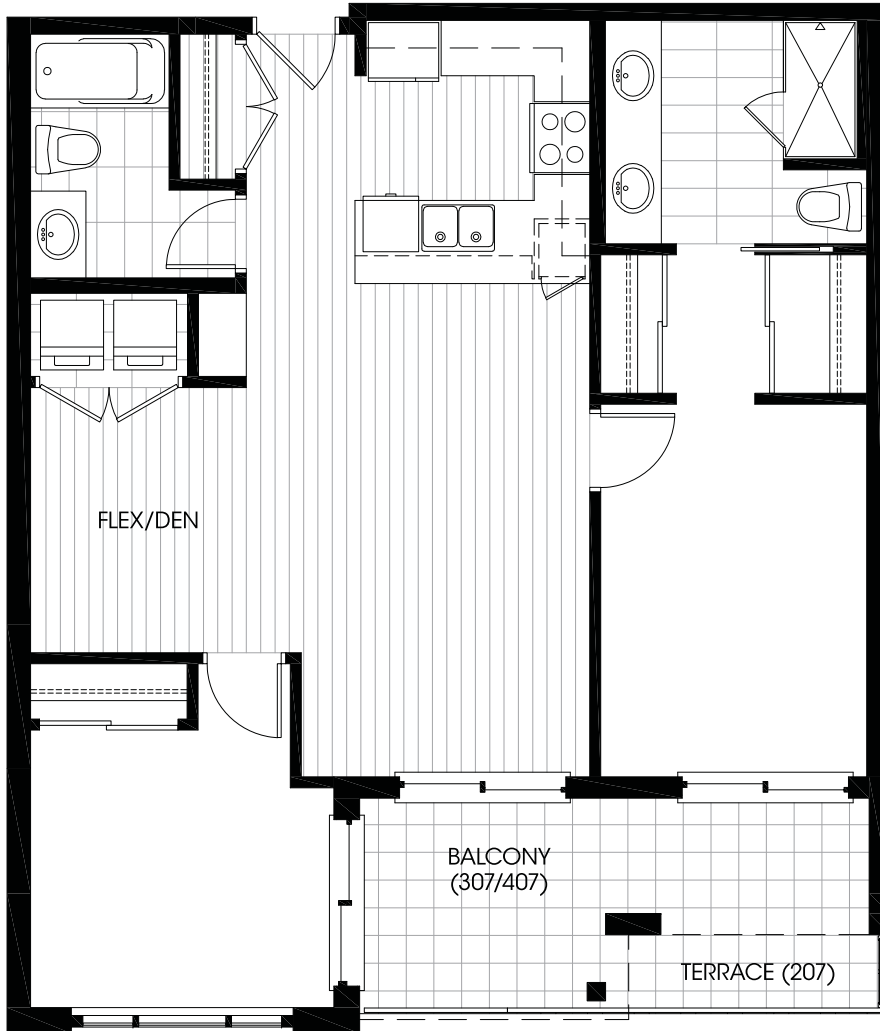
- Unit 206
- Unit 306
- Unit 406

Level 2 to 4



HASTINGS STREET

The builder reserves the right to change floorplans, elevations, specifications and prices without notice. Square footage as noted are approximations of each individual unit. The purchaser is responsible for verification of this unit layout and square footages. All renderings, floorplans, models and maps are artist's conceptions and not intended to be an actual depiction of buildings or landscaping. Floorplans may vary. Ask a salesperson for details. S.U.C.E.



VERDI

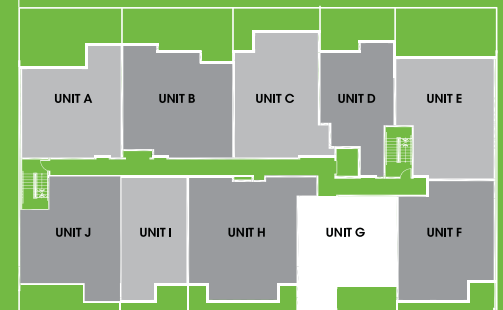
TYPE G

2 Bedroom + Den

Total Area 982 sq ft

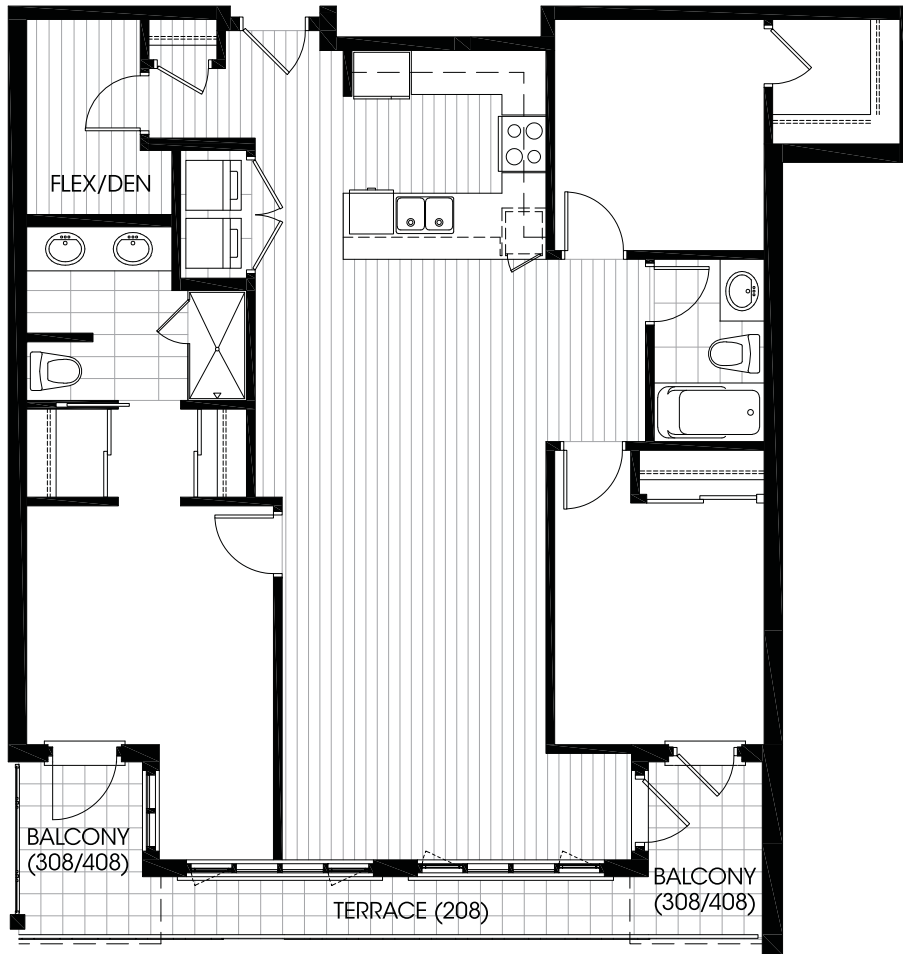
- Unit 207
- Unit 307
- Unit 407

Level 2 to 4



HASTINGS STREET

The builder reserves the right to change floorplans, elevations, specifications and prices without notice. Square footage as noted are approximations of each individual unit. The purchaser is responsible for verification of the unit layout and square footages. All renderings, floorplans, models and maps are artist's conceptions and not intended to be an actual depiction of buildings or landscaping. Floorplans may vary. Ask a salesperson for details. E.U.C.E.



VERDI

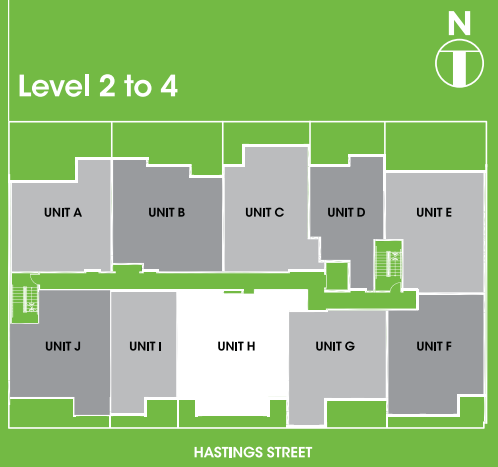


TYPE H

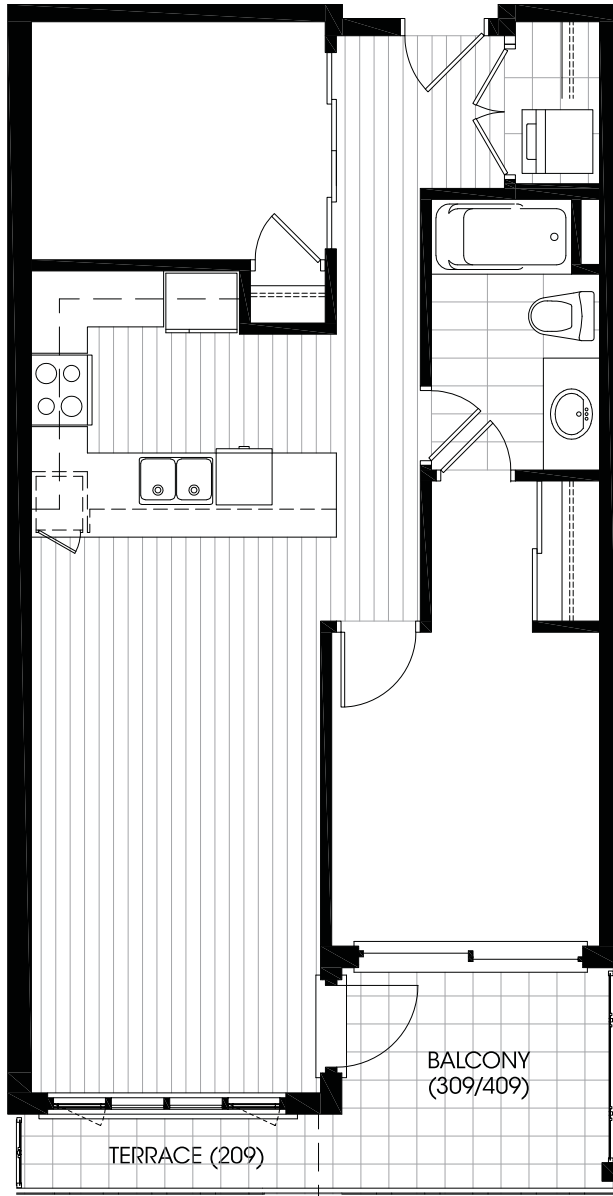
3 Bedroom + Den

Total Area 1313 sq ft

- Unit 208
- Unit 308
- Unit 408



The builder reserves the right to change floorplans, elevations, specifications and prices without notice. Square footage as noted are approximations of each individual unit. The purchaser is responsible for verification of the unit layout and square footages. All renderings, floorplans, models and maps are artist's conceptions and not intended to be an actual depiction of buildings or landscaping. Floorplans may vary. Ask a salesperson for details. E.A.C.L.



VERDI

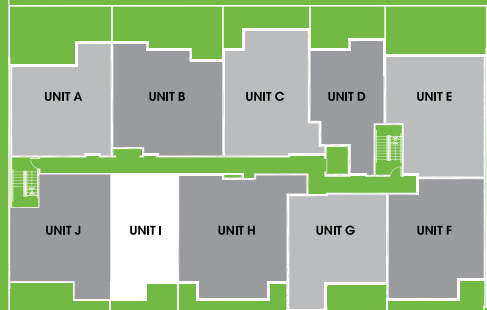


2 Bedroom

Total Area 776 sq ft

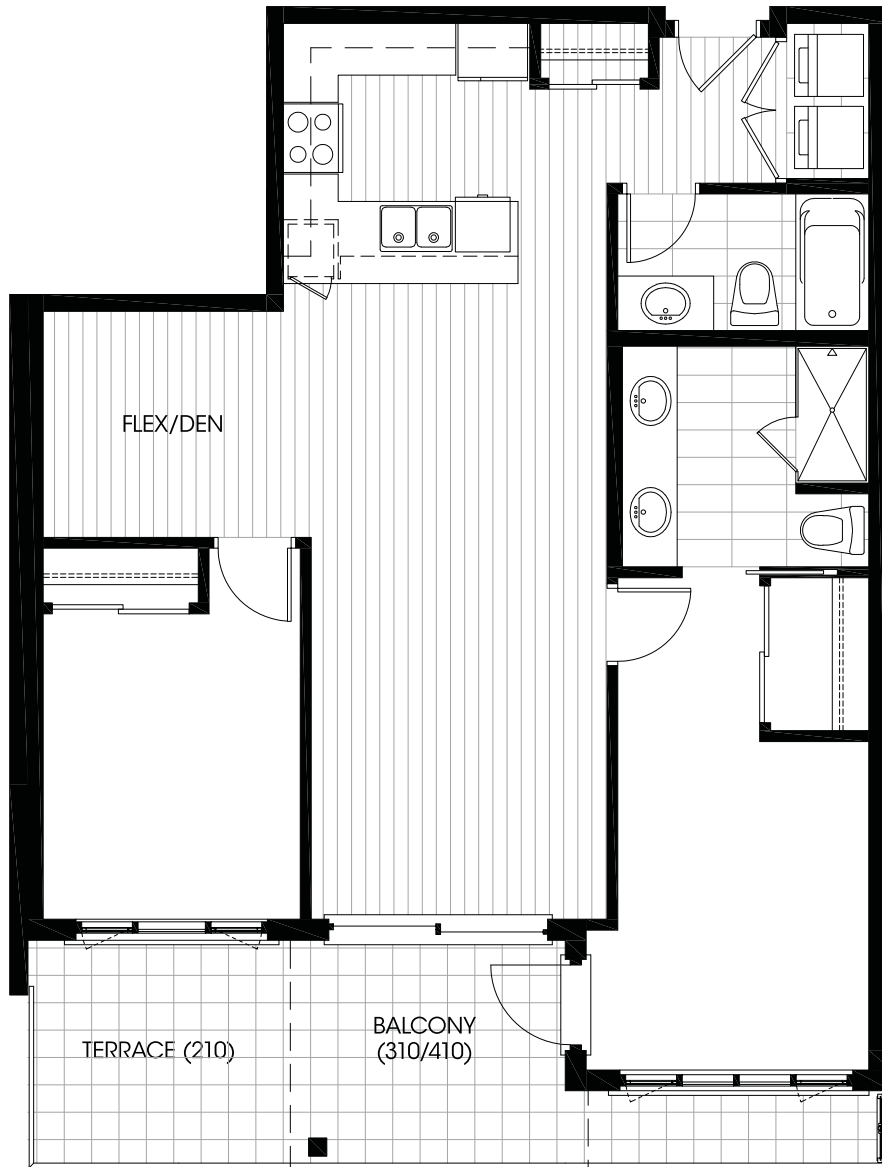
- Unit 209
- Unit 309
- Unit 409

Level 2 to 4



HASTINGS STREET

* ADAPTABLE UNIT IF NECESSARY
The builder reserves the right to change floorplans, elevations, specifications and prices without notice. Square footage as noted are approximations of each individual unit. The purchaser is responsible for verification of the unit layout and square footages. All renderings, floorplans, models and maps are artist's conceptions and not intended to be an actual depiction of buildings or landscaping. Floorplans may vary. Ask a salesperson for details. E.&G.L.



VERDI

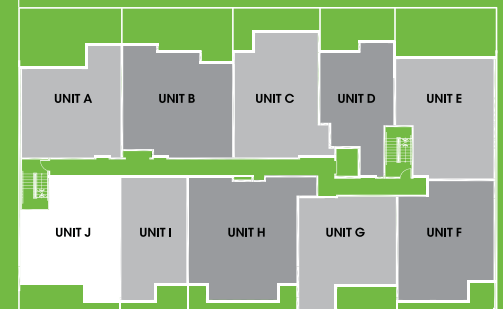
TYPE J

2 Bedroom + Den

Total Area 1032 sq ft

- Unit 210
- Unit 310
- Unit 410

Level 2 to 4



HASTINGS STREET

The builder reserves the right to change floorplans, elevations, specifications and prices without notice. Square footage as noted are approximations of each individual unit. The purchaser is responsible for verification of this unit layout and square footage. All renderings, floorplans, models and maps are artist's conceptions and not intended to be an actual depiction of buildings or landscaping. Floorplans may vary. Ask a salesperson for details. E.B.C.E.