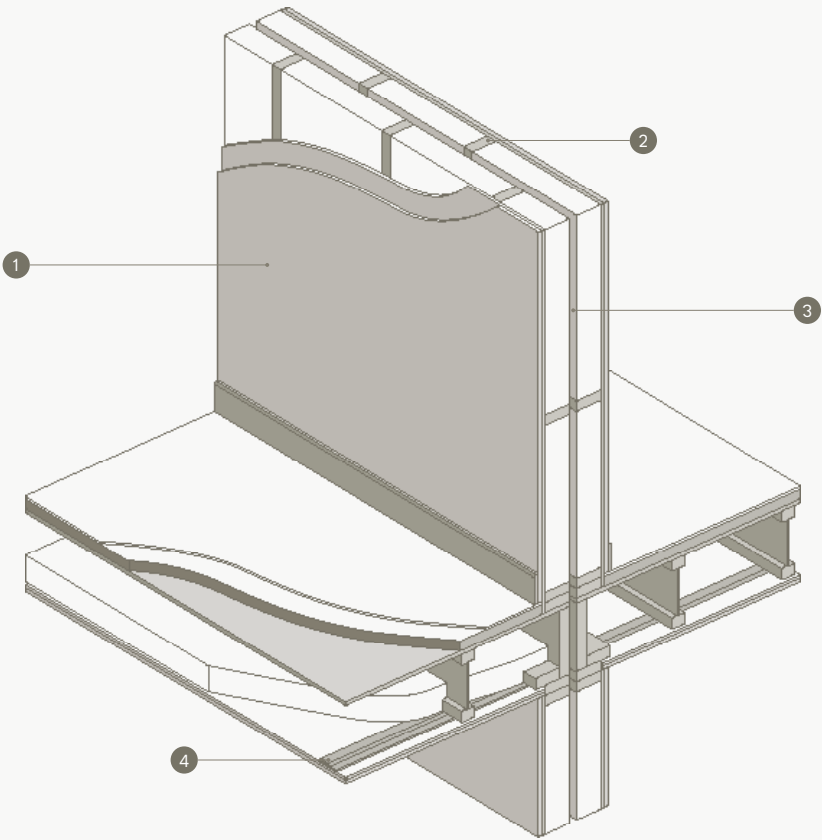




# Partition wall

By strategically incorporating innovative materials and design methods, we've enhanced our building's acoustic and thermal efficiency. This approach underscores our commitment to utilizing design for achieving superior environmental performance, energy efficiency, and resident comfort.



**1. Dual-layer gypsum wall boards**

Our walls feature two layers of gypsum wall board to reduce sound transfer, offering you the serenity and privacy you deserve.

**2. Offset studs**

The use of offset studs in our wall construction disrupts the path of sound, enhancing the quietness of your living environment.

**3. Engineered air space**

An air space designed between walls acts as a thermal and acoustic buffer, ensuring your home remains a comfortable retreat all year round.

**4. Ceiling resilient channel**

Mounting ceiling drywall to a resilient channel dampens sound transfer above, creating a peaceful ambiance throughout your home.