

The background features a repeating, symmetrical pattern of stylized leaves and scrolls in a light beige color. The pattern is dense and covers the entire page. In the center, there is a large, faint watermark of a crest or emblem, which appears to be a coat of arms with a crown on top and a shield below, surrounded by decorative elements.

# TRIOMPHE

VIP ADVANCED PREVIEW KIT



# A RESIDENTIAL MASTERPIECE

IN THE HEART OF BRENTWOOD

All illustrations and renderings reflect the artist's interpretation only and are not accurate representation of the actual project. Actual suite interiors, exteriors and views may be noticeably different than what is depicted in photographs and renderings. The developer reserves the right to make modifications, substitutions, change brands, sizes, colours, layouts, materials, ceiling heights, features, finishes and other specifications without prior notification. Such details are governed by the applicable offer to purchase and agreement for sale and disclosure statement.



# TRIOMPHE IS A GLORY TO BEHOLD.

THE TOWER FEATURES A STRONG CONTEMPORARY SILHOUETTE WITH STAGGERED LIGHTING THAT ADDS A DYNAMIC VISUAL APPEARANCE. DRAMATIC TAPERED ENTRY COLUMNS CREATE A SENSE OF ARRIVAL, AND THE BEAUTIFULLY PAVED MOTOR COURT WITH TERRACED GARDENS IS REMINISCENT OF AN UPSCALE HOTEL.



All illustrations and renderings reflect the artist's interpretation only and are not accurate representation of the actual project. Actual suite interiors, exteriors and views may be noticeably different than what is depicted in photographs and renderings. The developer reserves the right to make modifications, substitutions, change brands, sizes, colours, layouts, materials, ceiling heights, features, finishes and other specifications without prior notification. Such details are governed by the applicable offer to purchase and agreement for sale and disclosure statement.



# DYNAMIC URBAN ENCLAVE. CONNECTED TO EVERYTHING.

15 MIN DRIVE  
DOWNTOWN  
VANCOUVER

1 MIN DRIVE  
TO VANCOUVER

5 MIN DRIVE  
HASTINGS SUNRISE  
NEIGHBOURHOOD

3 MIN WALK  
WILLINGDON  
HEIGHTS PARK

3 MIN WALK  
GILMORE STATION

## TRIOMPHE

7 MIN WALK  
WHOLE FOODS

9 MIN WALK  
BRENTWOOD MALL

WALK SCORE 77  
BIKE SCORE 91  
TRANSIT SCORE 78

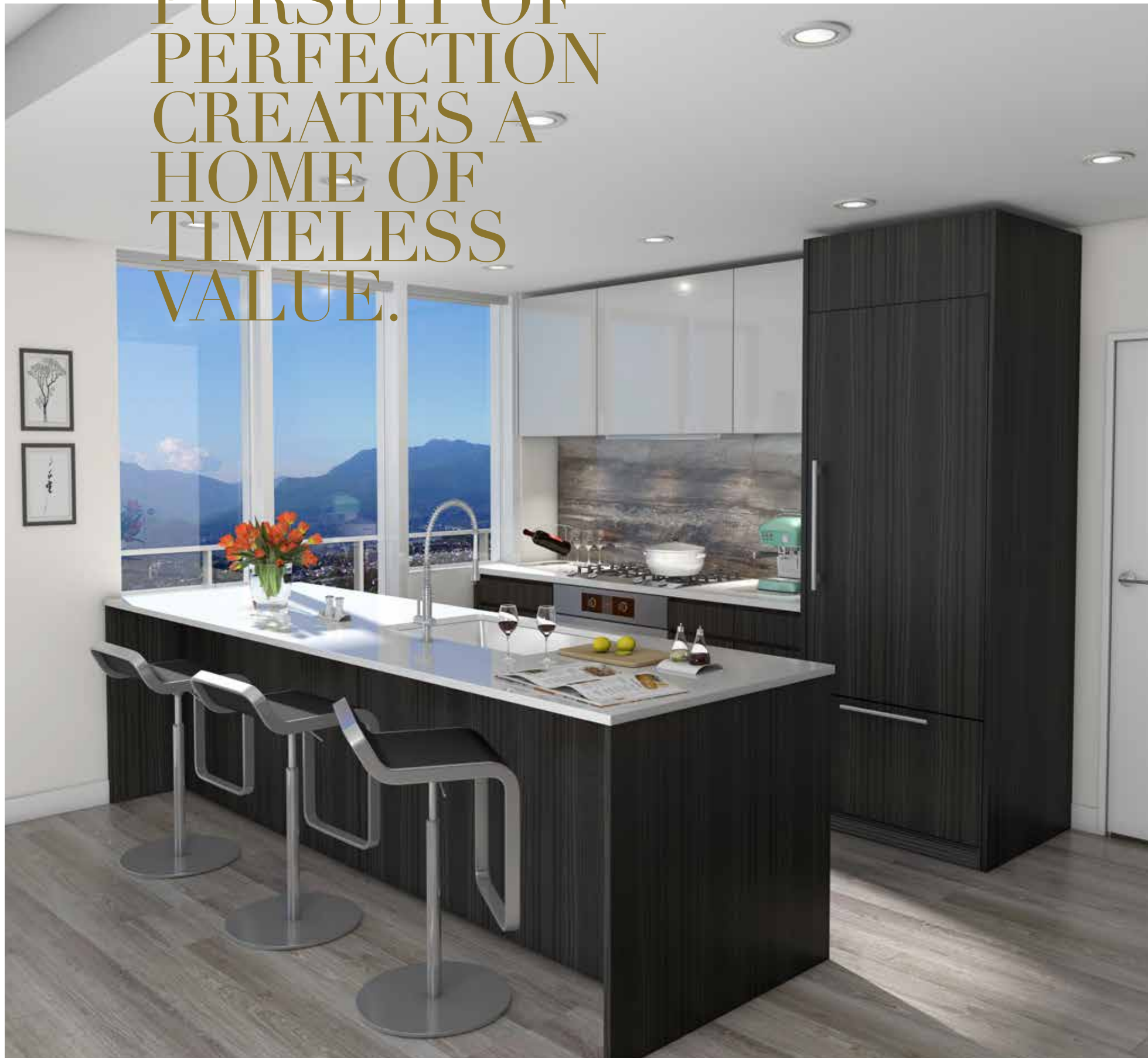
JOEY BURNABY  
CACTUS CLUB  
BROWN'S SOCIAL HOUSE  
SUSHI GARDEN  
THE KEG STEAKHOUSE  
BOSTON PIZZA  
TIM HORTONS  
STARBUCKS

BRENTWOOD TOWN CENTRE  
WHOLE FOODS  
SHOPPER'S DRUG MART  
WINNERS  
SAVE-ON-FOODS  
HOME DEPOT  
COSTCO  
GILMORE STATION  
BRENTWOOD STATION  
HOLDOM STATION

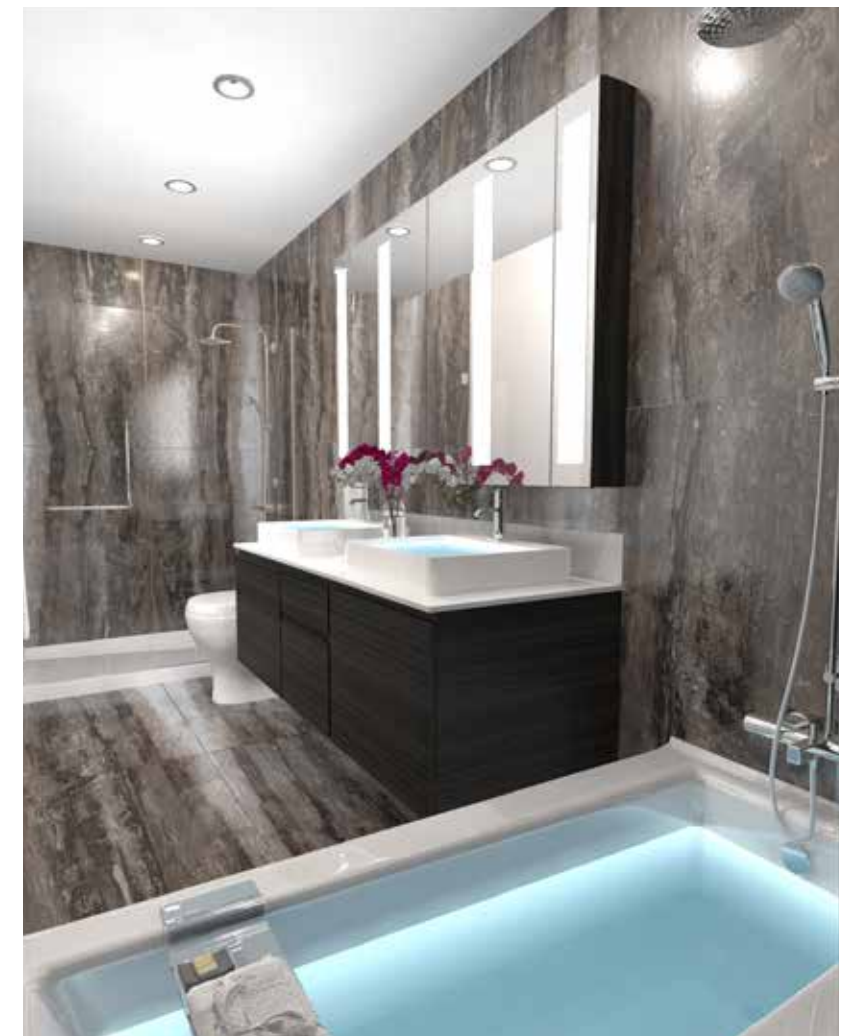
STEVE NASH FITNESS CLUB  
GOLD'S GYM  
OXYGEN FITNESS  
BIKE TRAILS  
WILLINGDON HEIGHTS PARK  
BURNABY LAKE



# PURSUIT OF PERFECTION CREATES A HOME OF TIMELESS VALUE.



SLEEK MODERN KITCHENS WITH POLISHED QUARTZ COUNTERTOPS AND HIGH-PERFORMANCE BOSCH APPLIANCES CULTIVATE CULINARY EXCELLENCE AND A SENSE OF REFINEMENT. BOTH THE DISHWASHER AND REFRIGERATOR ARE CUSTOM PANELED TO MATCH THE RICH WOOD GRAIN EUROPEAN-STYLE CABINETRY, AND THOUGHTFUL LIGHTING OPTIONS ALLOW YOU TO CREATE BRIGHT WORKSPACES AND SET THE MOOD FOR CASUAL ENTERTAINING. SUCH TIMELESS ELEGANCE IS ALWAYS IN GOOD TASTE.



Bathrooms feature oversized marble inspired porcelain tile floors and walls, modern vessel basins, and European-style vanity cabinetry. Every detail is thoughtfully designed to envelop body and mind in soothing style. Master ensembles are bathed in elegance with deluxe rain showers and handheld showers that make personal indulgence an everyday occurrence.

All illustrations and renderings reflect the artist's interpretation only and are not accurate representation of the actual project. Actual suite interiors, exteriors and views may be noticeably different than what is depicted in photographs and renderings. The developer reserves the right to make modifications, substitutions, change brands, sizes, colours, layouts, materials, ceiling heights, features, finishes and other specifications without prior notification. Such details are governed by the applicable offer to purchase and agreement for sale and disclosure statement.



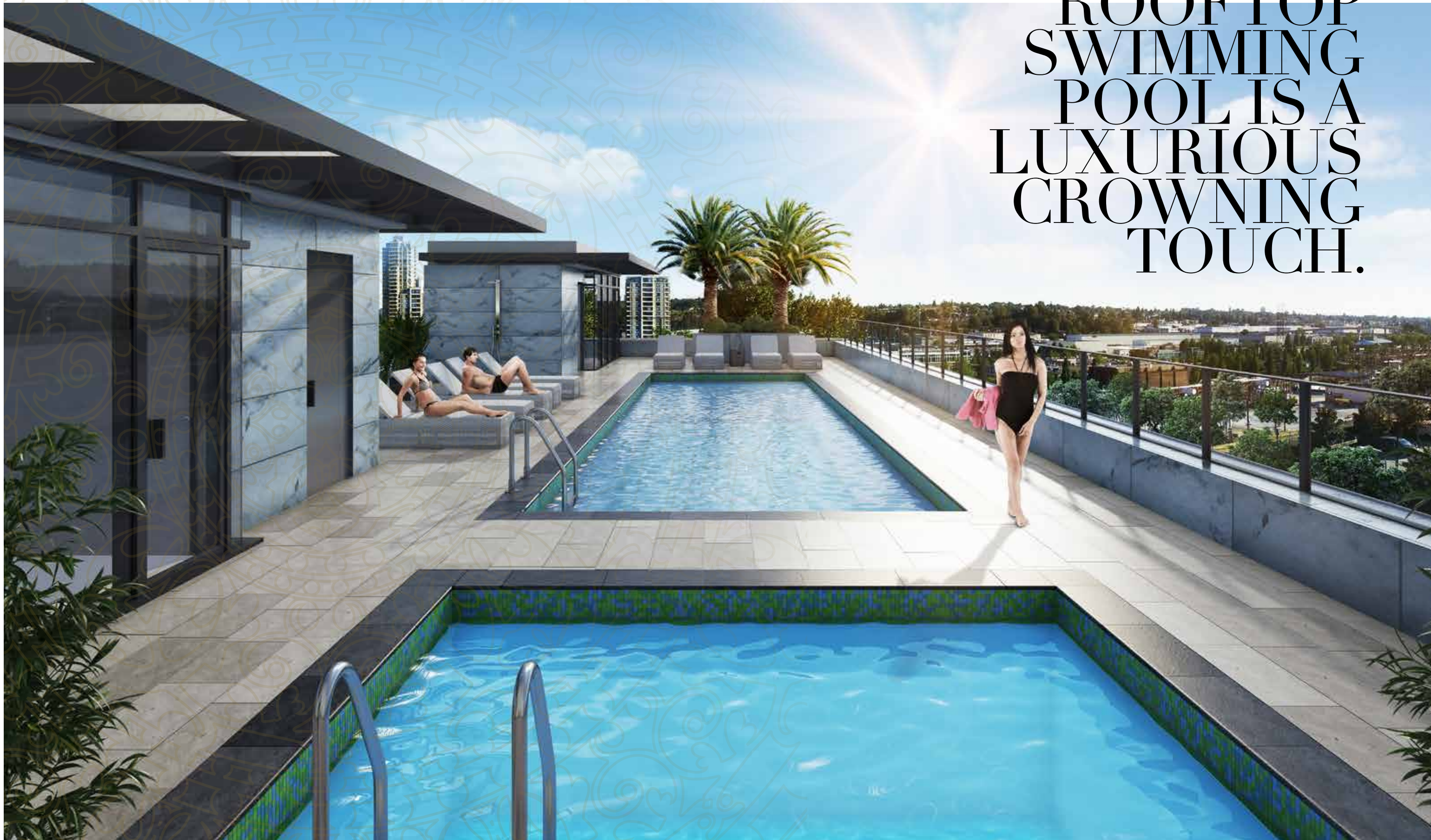


#### UPON ENTERING THE GRAND 40' HIGH LOBBY

ADORNED WITH TRAVERTINE MARBLE, BRONZE AND FRENCH-STYLE FURNISHINGS, YOU'LL FEEL COMPELLED TO TAKE A MOMENT AND FULLY ABSORB THE MAGNIFICENCE OF THE SPACE. HIGH-SPEED ELEVATORS WITH FLOOR-RESTRICTED ACCESS AND A CONCIERGE AT YOUR SERVICE WILL ENHANCE SECURITY AND PEACE OF MIND.



# ROOFTOP SWIMMING POOL IS A LUXURIOUS CROWNING TOUCH.



All illustrations and renderings reflect the artist's interpretation only and are not accurate representation of the actual project. Actual suite interiors, exteriors and views may be noticeably different than what is depicted in photographs and renderings. The developer reserves the right to make modifications, substitutions, change brands, sizes, colours, layouts, materials, ceiling heights, features, finishes and other specifications without prior notification. Such details are governed by the applicable offer to purchase and agreement for sale and disclosure statement.



# CLUB TRIOMPHE

## 3-STOREY AMENITY PAVILION



MUSIC ROOM/GAMES ROOM

SEPARATE STEAM ROOMS  
FOR MEN AND WOMEN

BUSINESS CENTRE/LIBRARY

FULLY EQUIPPED KITCHEN

SOCIAL LOUNGE WITH  
A BIG SCREEN TV

BBQ AREA

FIRE PIT

YOGA/DANCE STUDIO



HOT TUB

OUTDOOR  
ROOFTOP  
POOL

LOUNGE  
AREA





DRAFT

**Plan A1**  
2 Bedroom + Den/Sleep  
Living: 857 sq.ft.  
Balcony: 372 sq.ft.  
Total: 1229 sq.ft.

**Plan A2**  
2 Bedroom  
Living: 690 sq.ft.  
Balcony: 246 sq.ft.  
Total: 936 sq.ft.

**Plan A3**  
2 Bedroom + Den/Sleep  
Living: 882 sq.ft.  
Balcony: 371 sq.ft.  
Total: 1253 sq.ft.

**Plan B1**  
1 Bedroom + Den/Sleep  
Living: 635 sq.ft.  
Balcony: 118 sq.ft.  
Total: 753 sq.ft.

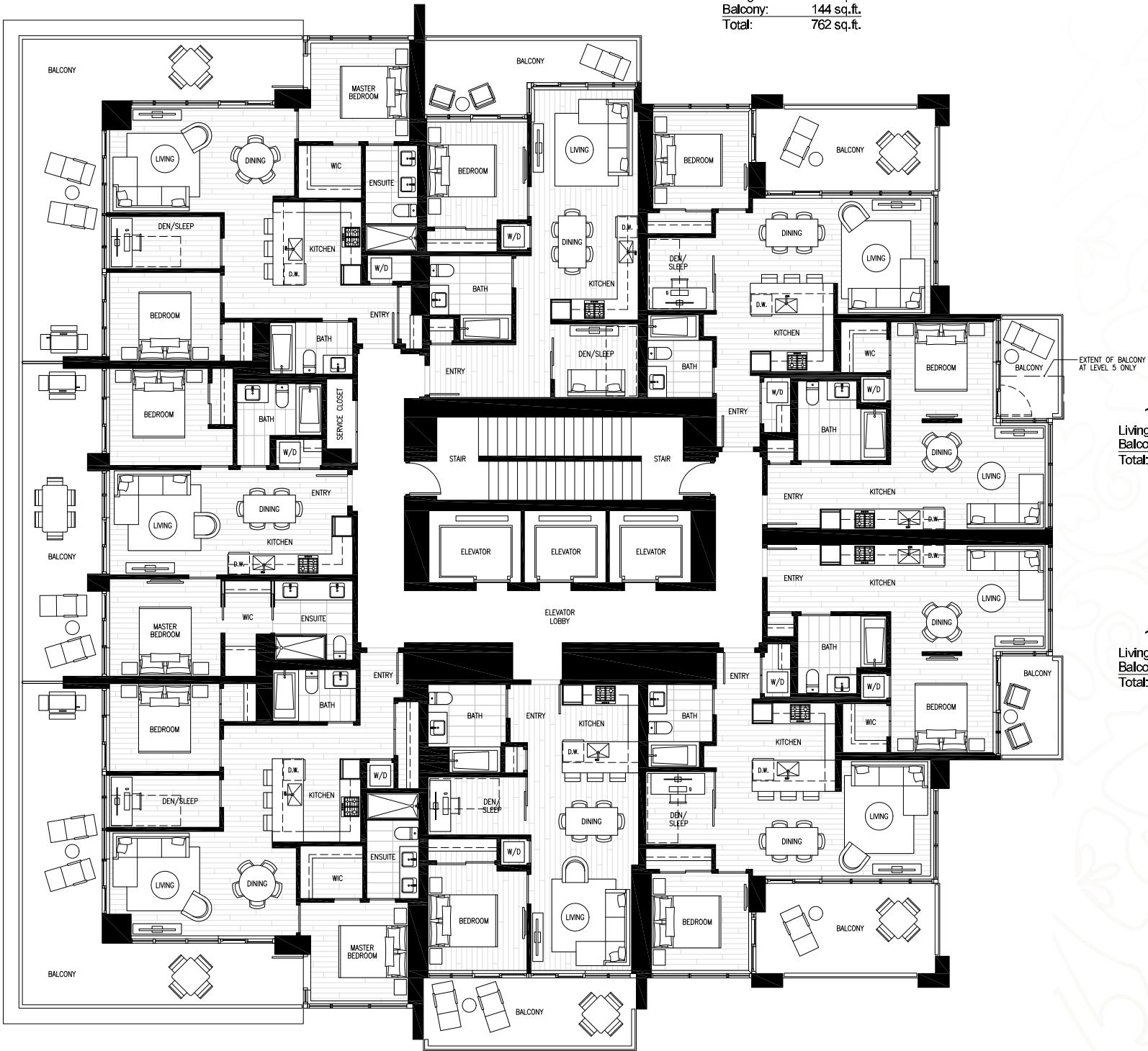
**Plan B2**  
1 Bedroom + Den/Sleep  
Living: 618 sq.ft.  
Balcony: 144 sq.ft.  
Total: 762 sq.ft.

**Plan C1**  
1 Bedroom  
Living: 482 sq.ft.  
Balcony: 23-58 sq.ft.  
Total: 505-540 sq.ft.

**Plan C2**  
1 Bedroom  
Living: 482 sq.ft.  
Balcony: 58 sq.ft.  
Total: 540 sq.ft.

**Plan B3**  
1 Bedroom + Den/Sleep  
Living: 613 sq.ft.  
Balcony: 149 sq.ft.  
Total: 762 sq.ft.

**Plan B4**  
1 bedroom + Den/Sleep  
Living: 619 sq.ft.  
Balcony: 137 sq.ft.  
Total: 756 sq.ft.



FLOORS 5-15



DRAFT

**Plan A1**  
2 Bedroom + Den/Sleep  
Living: 857 sq.ft.  
Balcony: 372 sq.ft.  
Total: 1229 sq.ft.

**Plan A2**  
2 Bedroom  
Living: 690 sq.ft.  
Balcony: 246 sq.ft.  
Total: 936 sq.ft.

**Plan A3**  
2 Bedroom + Den/Sleep  
Living: 882 sq.ft.  
Balcony: 371 sq.ft.  
Total: 1253 sq.ft.

**Plan B5**  
1 Bedroom + Den/Sleep  
Living: 635 sq.ft.  
Balcony: 118 sq.ft.  
Total: 753 sq.ft.

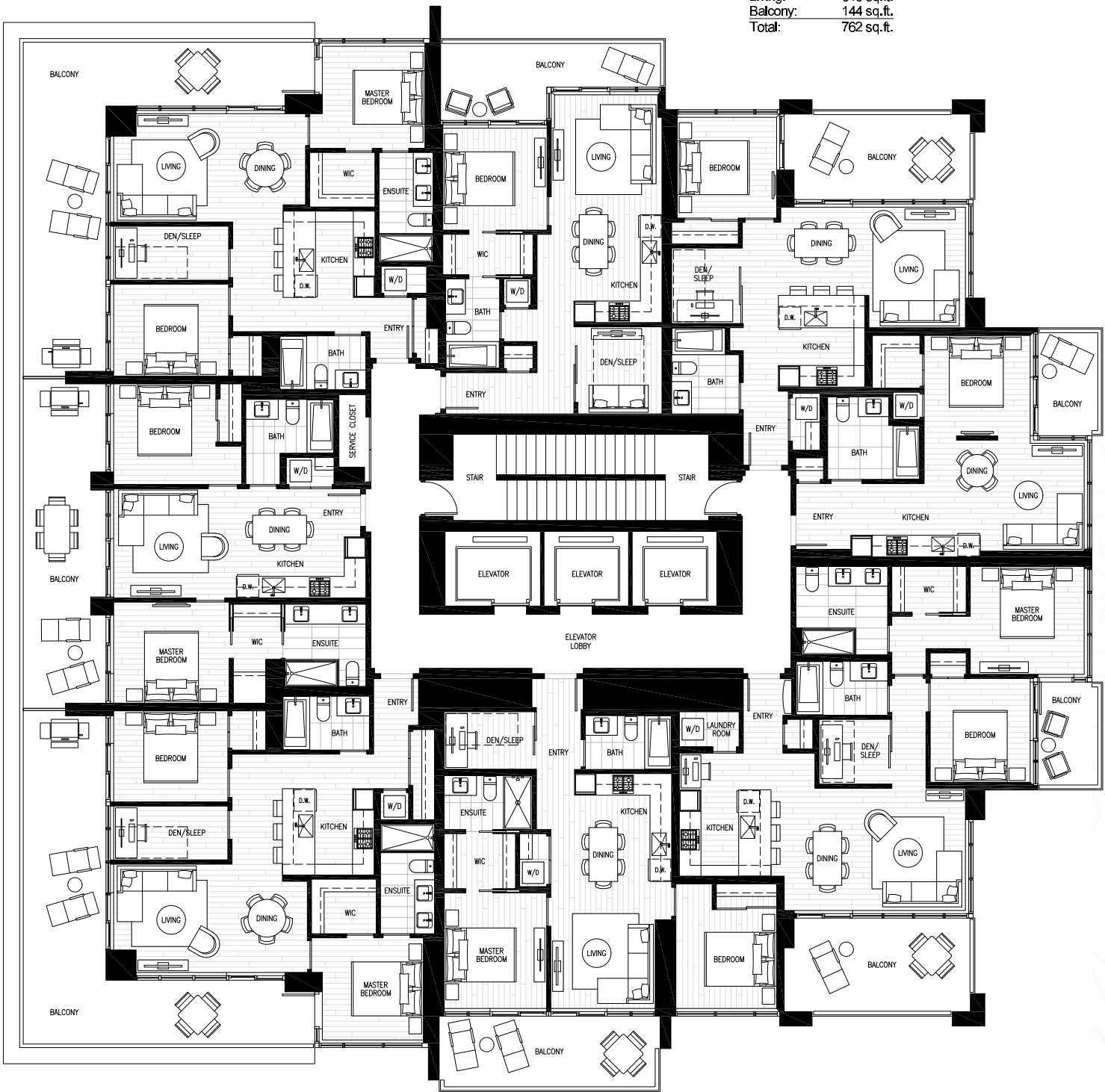
**Plan B2**  
1 Bedroom + Den/Sleep  
Living: 618 sq.ft.  
Balcony: 144 sq.ft.  
Total: 762 sq.ft.

**Plan C3**  
1 Bedroom  
Living: 486 sq.ft.  
Balcony: 58 sq.ft.  
Total: 544 sq.ft.

C3 (L 16 – 34)  
C4 (L 35 – 43)

**Plan A5**  
2 Bedroom + Den/Sleep  
Living: 942 sq.ft.  
Balcony: 215 sq.ft.  
Total: 1157 sq.ft.

**Plan A4**  
2 bedroom + Den/Sleep  
Living: 784 sq.ft.  
Balcony: 137 sq.ft.  
Total: 921 sq.ft.



FLOORS 16-43



# LUXURY FEATURES AND AMENITIES

## RESIDENTIAL MASTERPIECE

- Positioned at the architectural gateway to Brentwood, a vibrant urban neighbourhood
- Award-winning development team led by internationally renowned Millennium Development Group
- Iconic architecture by Chris Dikeakos Architects Inc. features staggered lighting on the tower's facade
- Grand port-cochère entry and two-storey lobby offers an impressive welcome
- Built to LEED sustainable standards
- Luxurious 1, 2, and 3 bedroom residences

## INSPIRING KITCHENS

- Polished white quartz countertops
- Two-tone, soft-close cabinetry
- White lacquer-finish upper cabinets
- Riobel chrome kitchen faucet with spray
- High performance appliances include:
  - Stainless steel 4-burner Bosch gas cooktop
  - Integrated stainless steel Bosch wall oven
  - Integrated Bosch refrigerator
  - Glide-out Bosch hood fan
  - Stainless steel Panasonic microwave

## CLUB TRIOMPHE

- Deluxe 3-storey amenity pavilion encompasses over 13,000 square feet of indoor and outdoor amenities
- Outdoor rooftop pool, hot tub, and lounge area
- Wellness centre with a gym, yoga/dance studio, and separate steam rooms
- Great room for socializing includes a fully equipped kitchen, dining area, and comfortable lounge with a big screen TV
- Business centre/library and games/music room
- Expansive outdoor entertaining area with a BBQ and fire pit
- Guest suite for visiting friends and family

## SPA-STYLE BATHROOMS

- Polished quartz countertops
- Modern above-counter vessel sink
- European-style vanity with soft-close hardware
- Floating mirror with medicine cabinet
- Large format porcelain floor tiles and tub/shower surround
- Grohe chrome fixtures

## ELEGANT INTERIORS

- Choice of two colour schemes by Mitchell Freedland Design: Clair (light) & Foncé (dark)
- Spacious open floor plans designed for entertaining and easy living
- Expansive 9' ceilings throughout; 10' 6" in penthouse suites
- Laminate wood flooring in all living areas
- Expansive balconies create a seamless connection between indoor and outdoor living
- Air-conditioning in all homes
- Blomberg front-loading washer and dryer

## SECURITY & PEACE OF MIND

- Solid concrete construction
- Secured gated underground parking
- Every home comes with parking
- Fob-controlled access to lobby, parkade and individual floors
- Car-charging station and 4 electric cars provided
- Comprehensive third party 2-5-10 year warranty
- Concierge at your service





L'HERMITAGE HOTEL



BELVEDERE



OLYMPIC VILLAGE



CITY IN-THE-PARK

## MILLENNIUM DEVELOPMENT



Millennium Development Group is in the business of building dreams and creating legacies through thoughtful design, high quality construction, and award-winning architecture that complements the natural beauty of the West Coast landscape. Their track record of success spans more than half a century and encompasses master-planned communities, mixed-use complexes, residential towers and buildings, shopping malls, office buildings, and commercial and industrial centres. Every project is born from meticulous research and site selection, and realized through construction management expertise, attention to detail, and financial solidity.

## MITCHELL FREEDLAND DESIGN

Mitchell Freedland Design is a world-class interior design firm and recipient of countless local and international accolades, including an elusive IIDA Global Excellence Award. Their forward-thinking designs are admired around the world, and now here in the community of Brentwood. With an eye for design and passion for innovation, the talented team of interior designers has succeeded in elevating both the value of the home and quality of life for residents of Triomphe.

## CHRIS DIKEAKOS ARCHITECTS INC.

The award-winning architectural firm boasts an impressive portfolio of landmark residential towers and is responsible for transforming skylines along North America's west coast. Highly respected for their innovative thinking, proven proficiency in all facets of the process, and commitment to service excellence, the architectural firm is once again pushing boundaries and making history with Triomphe in Brentwood.

## MAGNUM PROJECTS LTD.

Magnum Projects Ltd. sets the standard for success in real estate sales and marketing. Their experienced team of real estate professionals develops and implements unique and innovative marketing programs, and has contributed to the success of some of the most notable developments across Canada. These refined skills and knowledge are now being applied to marketing Triomphe in Brentwood.





OLYMPIC VILLAGE. EDGEWATER. LUMIÈRE. CITY IN-THE-PARK. L'HERMITAGE HOTEL. ALEXANDRA ENGLISH BAY. OMA.