

PLAN PH5 | 2 BEDROOM + DEN
UNIT 4305

TOTAL AREA 4,050 SQ FT

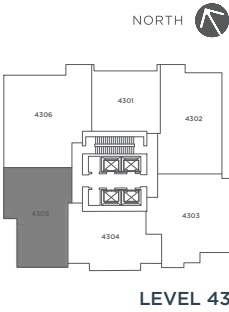
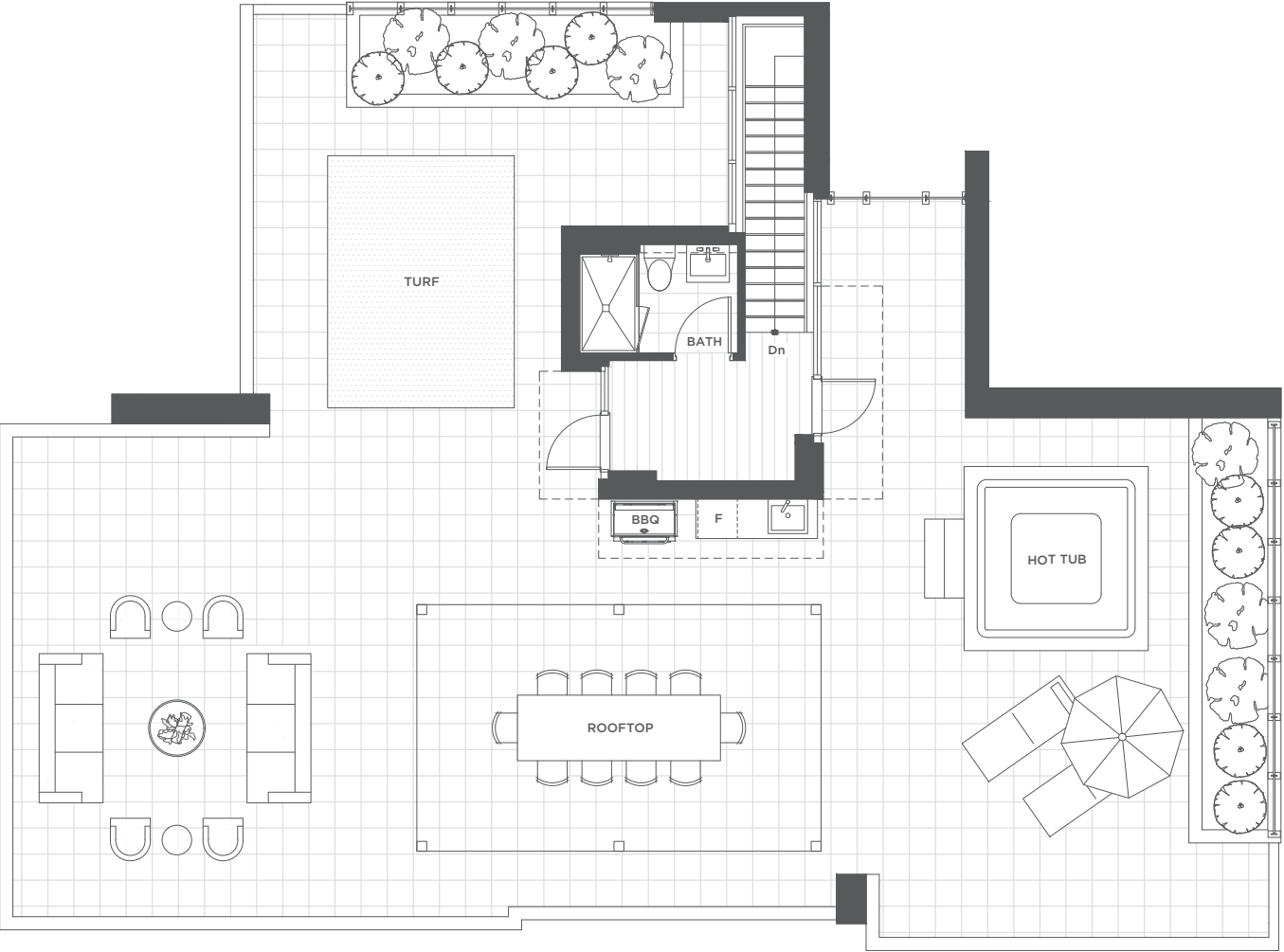
1,450 SQ FT
INDOOR AREA

2,600 SQ FT
OUTDOOR AREA



LIST OF APPLIANCES:

- 1. 36" Sub-Zero Integrated Fridge
- 2. 30" Wolf Wall Oven
- 3. 36" Wolf Gas Cooktop
- 4. 36" Faber Cristal Hoodfan
- 5. Panasonic Microwave
- 6. 24" Blomberg Integrated Dishwasher
- 7. 24" Undercounter Wine Fridge
- 8. Sink Disposal
- 9. Pantry
- 10. High Efficiency Full Size Samsung Washer and Dryer
- 11. Steam Shower



The floorplans, square footage, dimensions, design and configuration of the strata lots and project are approximate and/or artist's interpretation only and may differ from what is shown. Final dimensions, square footage, and configuration shall be determined by the final strata plans. Final floorplans may be the mirror image of the floorplans shown above. Refer to architectural drawings. The developer reserves the right to make changes without notice to the floorplans, ceiling heights, project design, landscaping plans, appliances, specifications, and features. E.&O.E.