

MILANO

HIGH LIVING • HIGH STYLE



PEOPLE WILL
STARE.
MAKE IT WORTH
THEIR WHILE

HARRY WINSTON

Work & Live Homes

solterra
(Milano) Limited Partnership

FEATURES

MILANO

WORK / LIVE HOMES

A BRENTWOOD LANDMARK

- Developed by award-winning Solterra — winner of over 70 development and builder awards
- Contemporary, yet timeless architecture by award-winning firm, GBL Architects
- State-of-the-art building technologies featuring engineered reinforced concrete construction
- Built to LEED Silver equivalent sustainability standards
- Dramatic, 3 storey lobby complete with designer furnishings and finishes, concierge, water feature and public art — creating an impressive grand entrance for homeowners and guests
- Vibrant Brentwood neighbourhood is a superb central location, with great access to a wide array of restaurants, boutiques, services, parks, schools, major transportation routes and transit; all within easy walking distance or minutes by car

A SIGNATURE HOME

- Work/Live Homes have the designated zoning which allows for small business use, including business signage opportunities
- Homes feature convenient street level access; 3 storeys of premium living; two bedrooms; and includes an amazing rooftop deck
- Two distinct designer colour schemes — *Paris or London* — inspired by the famous design capitals
- Rich, wide-plank laminate wood floors in kitchen, living area, and dining area
- Quality nylon carpeting in all bedrooms and upper floor hallways
- Elegant smooth ceilings**, ranging up to 8'6", add to the contemporary look and clean lines of the home
- Modern, overheight 7' flat slab interior doors throughout the home
- Contemporary roller window shades throughout the home
- Modern "square edge" baseboards and door moldings throughout the home
- Convenient pre-wiring for dining room light, kitchen pendant light, and living room light allow owners to customize their spaces at a later date with their own lighting selections
- Spacious, open air patios or roof decks for outdoor enjoyment and relaxation

GOURMET KITCHENS

- Sleek and luxurious dual tone, Italian-imported cabinetry in horizontal wood grain Italian melamine and high gloss acrylic finishes
- Rich, exquisite kitchen cabinetry features soft close mechanisms
- *Optional* convenient kitchen island with dining table extension provides additional storage, counter space, and multi-purpose uses *see sales team for exact detail*
- Elegant, quartz countertops with striking full-height backsplashes
- Sleek under cabinet lighting provides both ambient and task illumination, and highlights the gorgeous quartz counters
- Modern, undermount stainless steel sink with the added convenience of in-sink waste disposal unit makes kitchen clean up a pleasure
- Deluxe, European chrome faucet and spray add sparkle, beauty and convenience to this exemplary kitchen
- Premium, high quality appliance package, perfect for those who love to cook, includes:
 - 24" Fulgor Milano gas cooktop
 - Concealed stainless steel hood fan
 - 30" Liebherr integrated refrigerator with bottom mount freezer
 - 18" Blomberg integrated, energy efficient dishwasher
 - 24" Fulgor Milano stainless steel electric wall oven

SPA-INSPIRED BATHROOMS

Ensuite

- Sleek and luxurious dual tone, Italian-imported cabinetry in horizontal wood grain Italian melamine and high gloss acrylic finishes
- Rich, exquisite bathroom cabinetry features soft close mechanisms
- Custom medicine cabinet with adjacent mirror, all framed with narrow ledge — perfect for small bath accessories
- Elegant and durable quartz countertops
- Modern undermount sink(s) and 3 piece, wide spread chrome faucet(s) for a touch of luxury
- Stunning handset, porcelain tile surround and heated tile floor for added comfort

- Sleek frameless glass door for shower* for a clean, modern look
- Luxurious soaker tub* for a relaxing bathing experience
- Stylish rain head style showerhead with European polished chrome faucets
- Water-efficient, dual low-flush toilet

Main Bath

- Rich Italian-imported, high gloss acrylic cabinetry with soft close mechanisms
- Sleek, mirrored medicine cabinet
- Elegant and durable quartz countertops
- Modern vessel style sink with polished chrome single lever sink faucet
- Oversize wall tile and handset tile floor
- Sleek frameless glass door for shower* for a clean, modern look
- Luxurious soaker tub* for a relaxing bathing experience
- Stylish rain head style showerhead with European polished chrome faucets
- Water-efficient, dual low-flush toilet

Work/Live Lower Level Bath

- Wheelchair accessible, including required sink
- Handset tile surround and tile floor
- Frameless glass door for shower for a clean, modern look
- Stylish rain head style showerhead with European polished chrome faucets
- Water-efficient, dual low-flush toilet

COMFORT AND CONVENIENCE

- Air conditioning in all homes for summer comfort
- In-suite front loading washer and stacking dryer for convenient laundering needs
- Telephone/cable/data outlets and high-capacity CAT-5 wiring maximize internet and digital entertainment
- Convenient USB outlets in master bedroom and kitchen for charging electronic devices
- Out-of-suite storage for each home provides ample room for the storage of seasonal and occasional use items
- One car parking stall for every home
see sales team for details on two car parking for 2 bedroom homes
- Optional electric car charging stall
see sales team for exact details

PEACE OF MIND

- Secured garage and lobby entrances with controlled access for underground owner and separate visitor parking
- Homes are pre-wired for a security system
- Low volatile organic compound paints, sealants and adhesives for a more healthy indoor environment
- Third Party Warranty includes 10-year structural coverage; 5-year water penetration coverage; and 2 years materials and labour coverage

*In select homes as specified on architectural plans.

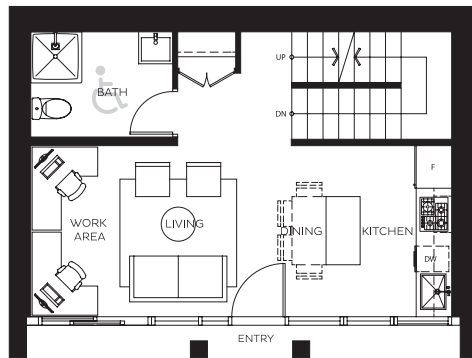
**Ceiling heights may vary on a per floor basis and change during the course of construction based on drop requirements for plumbing, mechanical and other necessary construction adjustments.

BOND STREET SERIES

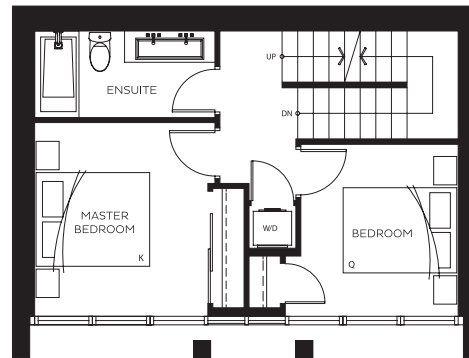
MILANO

2 BEDROOM, 2 BATH (WORK / LIVE B)

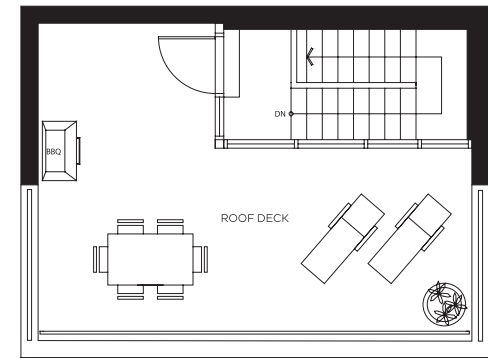
INDOOR 1,259 SQ FT
OUTDOOR 545 SQ FT
TOTAL 1,804 SQ FT



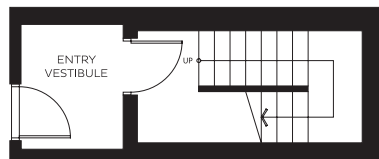
LEVEL 1



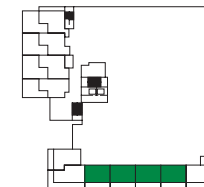
LEVEL 2



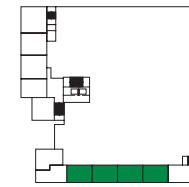
LEVEL 3



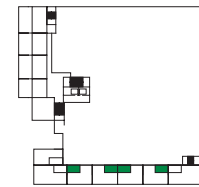
GARAGE LEVEL



LEVEL 1



LEVEL 2



LEVEL 3

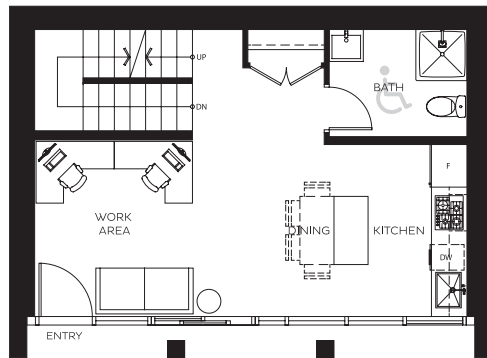
N

BOND STREET SERIES

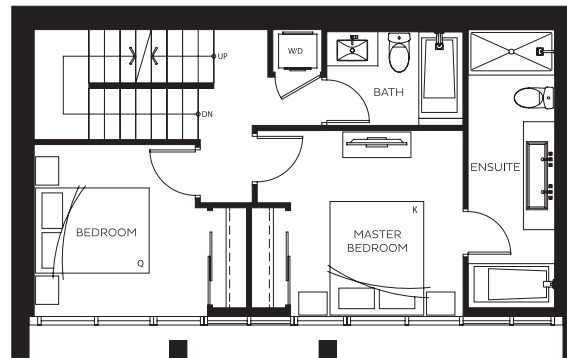
MILANO

2 BEDROOM, 3 BATH (WORK / LIVE B1)

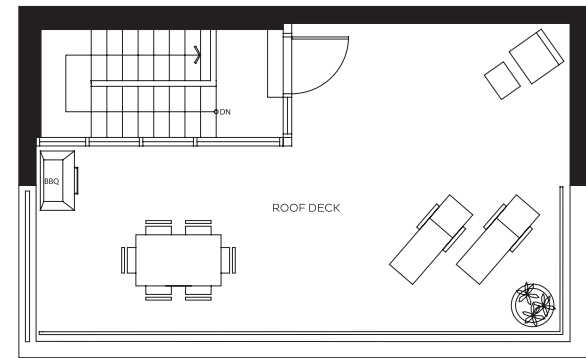
INDOOR 1,391 SQ FT
OUTDOOR 673 SQ FT
TOTAL 2,064 SQ FT



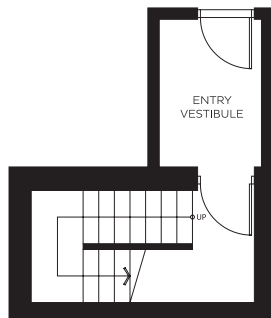
LEVEL 1



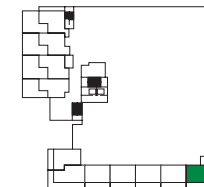
LEVEL 2



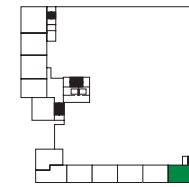
LEVEL 3



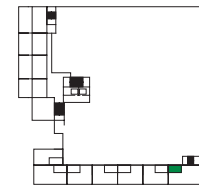
GARAGE LEVEL



LEVEL 1



LEVEL 2



LEVEL 3

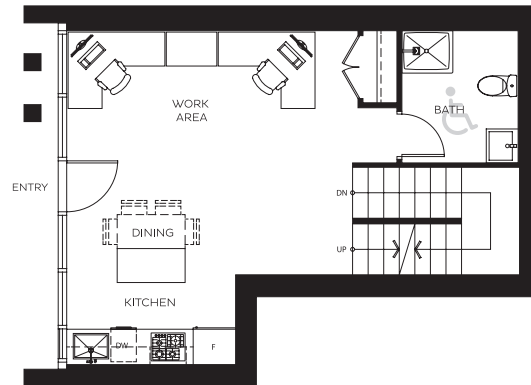
N

BOND STREET SERIES

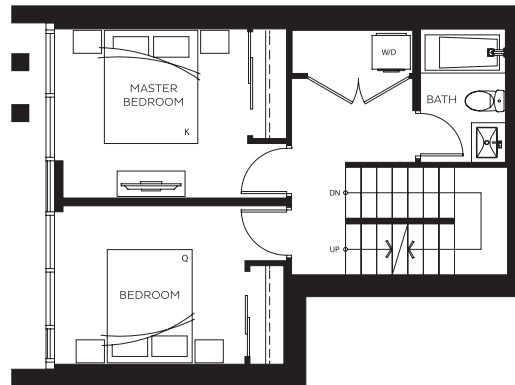
MILANO

2 BEDROOM, 2 BATH (WORK / LIVE B2)

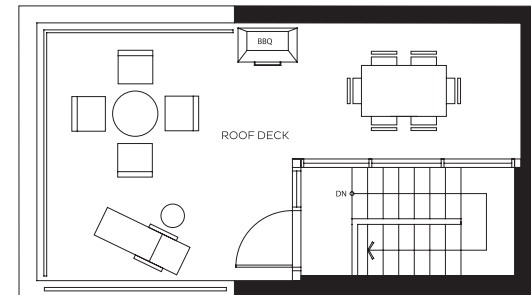
INDOOR 1,319 SQ FT
OUTDOOR 341 SQ FT
TOTAL 1,654 SQ FT



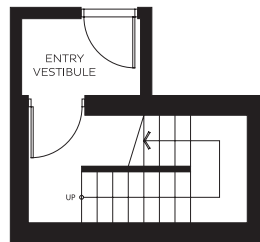
LEVEL 1



LEVEL 2

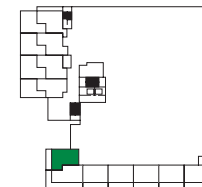


LEVEL 3

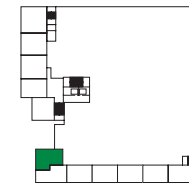


GARAGE LEVEL

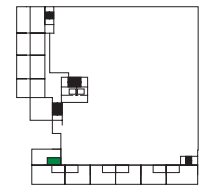
N



LEVEL 1



LEVEL 2



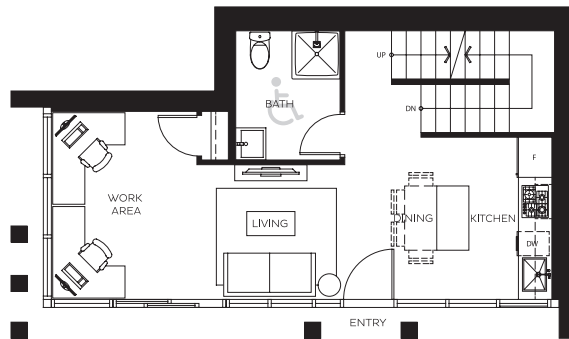
LEVEL 3

BOND STREET SERIES

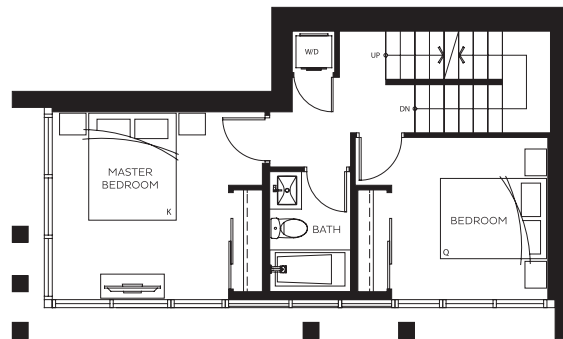
MILANO

2 BEDROOM, 2 BATH (WORK / LIVE B3)

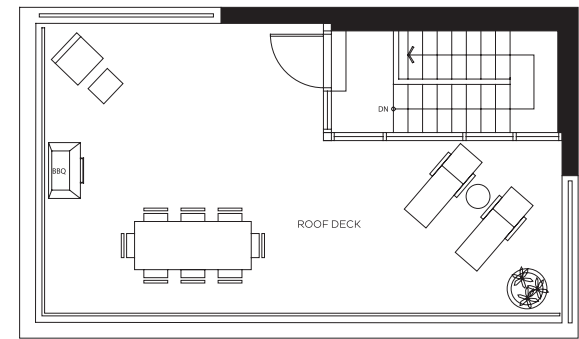
INDOOR 1,329 SQ FT
OUTDOOR 688 SQ FT
TOTAL 2,017 SQ FT



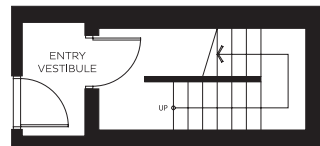
LEVEL 1



LEVEL 2

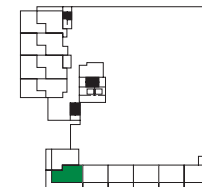


LEVEL 3

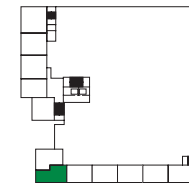


GARAGE LEVEL

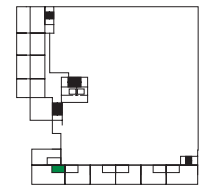
N



LEVEL 1



LEVEL 2



LEVEL 3