



LYNN LE DREW PREC*

LE DREW & GATWARD GROUP
OAKWYN REALTY LTD.
604-346-6801
LYNN@NESTPRESALES.COM
WWW.NESTPRESALES.COM

TOTAL INTERIOR: 654 SQ FT

TOTAL: 1 BEDROOM + 1 BATHROOM

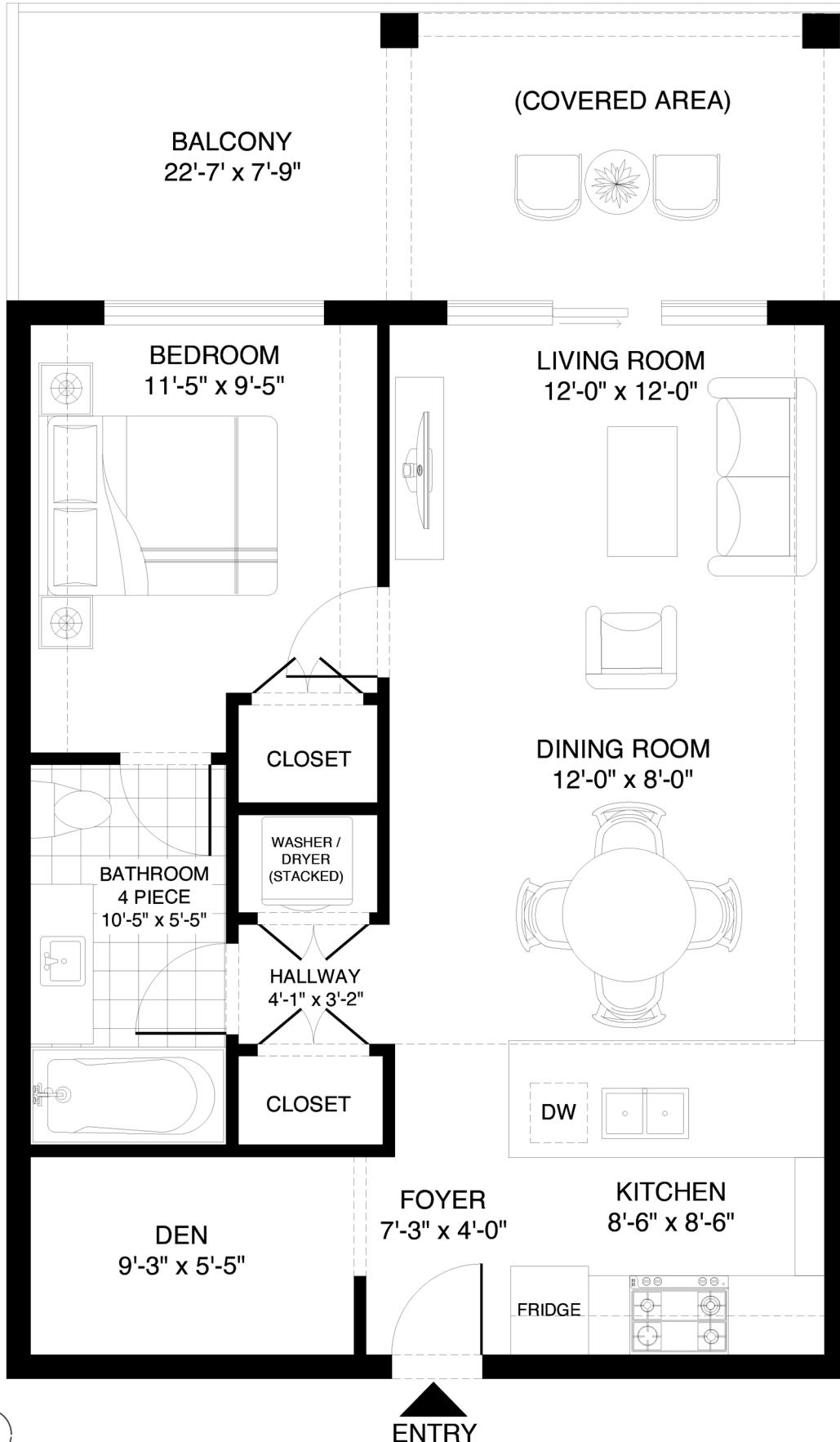
TOTAL EXTERIOR: 180 SQ FT

BALCONY: 180 SQ FT

Unit 206 - 23233 Gilley Road

Richmond, BC, V6V 1E6

Year Built: 2020



CEILING HEIGHT 7'-9" - 9'-0"

MAIN FLOOR
654 SQ FT



REALTY STUDIOS
RESIDENTIAL | COMMERCIAL | LUXURY
MARKETING | DESIGN | ANALYTICS



Developed On: February 6, 2025 - Valid Until: July 6, 2025

Le Drew & Gatward
GROUP
SCALE
0' 5'



OAKWYN REALTY