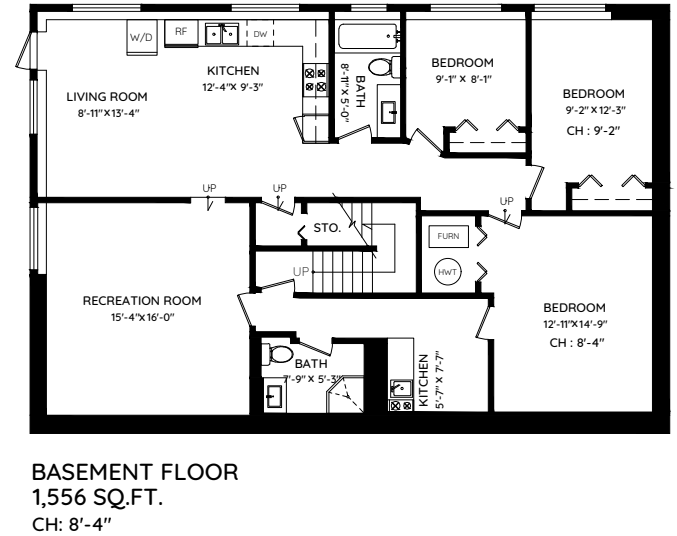
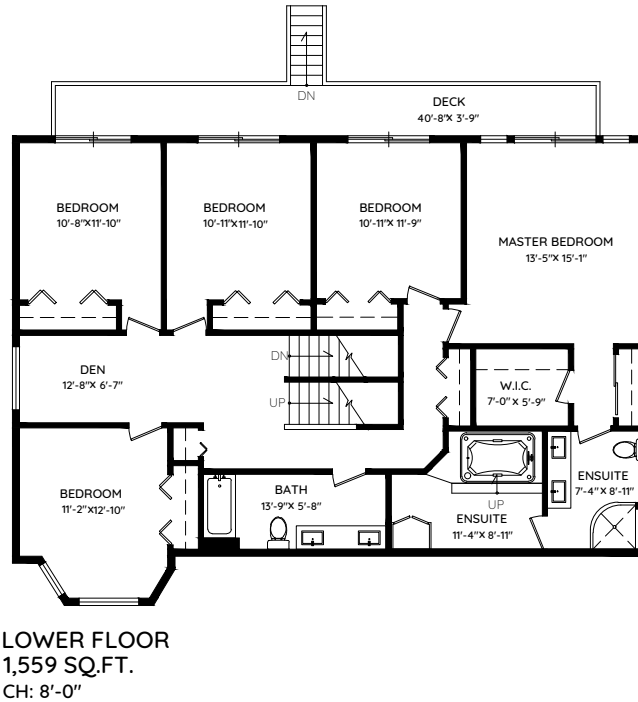
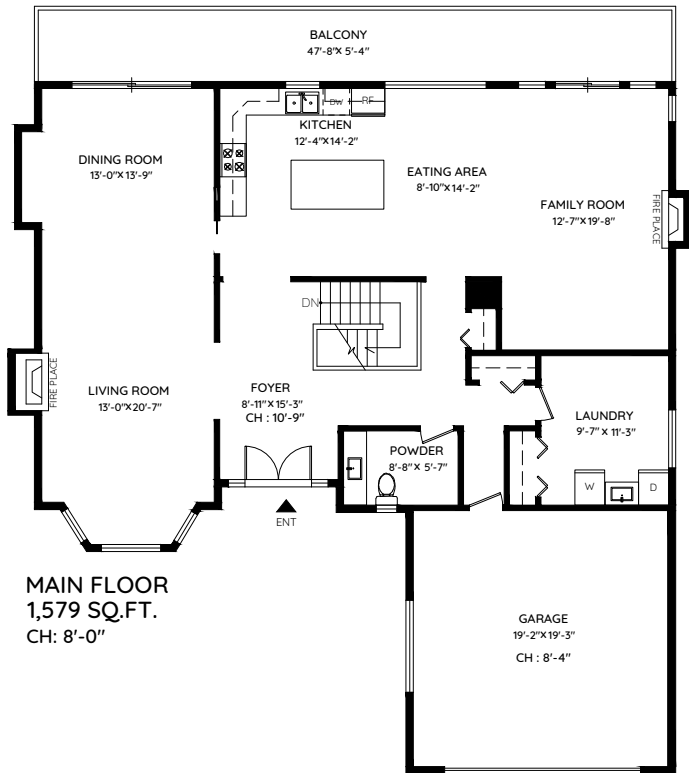


# 1245 DYCK ROAD

## NORTH VANCOUVER, BC



|              |                     |              |                   |
|--------------|---------------------|--------------|-------------------|
| MAIN         | 1,579 SQ.FT.        | GARAGE       | 406 SQ.FT.        |
| UPPER        | 1,556 SQ.FT.        | BALCONY      | 273 SQ.FT.        |
| BASEMENT     | 1,559 SQ.FT.        | DECK         | 169 SQ.FT.        |
| <b>TOTAL</b> | <b>4,694 SQ.FT.</b> | <b>TOTAL</b> | <b>848 SQ.FT.</b> |



The floor plan and the measurements are approximate and are to be used for advertising usage only. Not suitable for architectural or construction. E&OE. © 2019 KEYPLAN Measuring Inc.