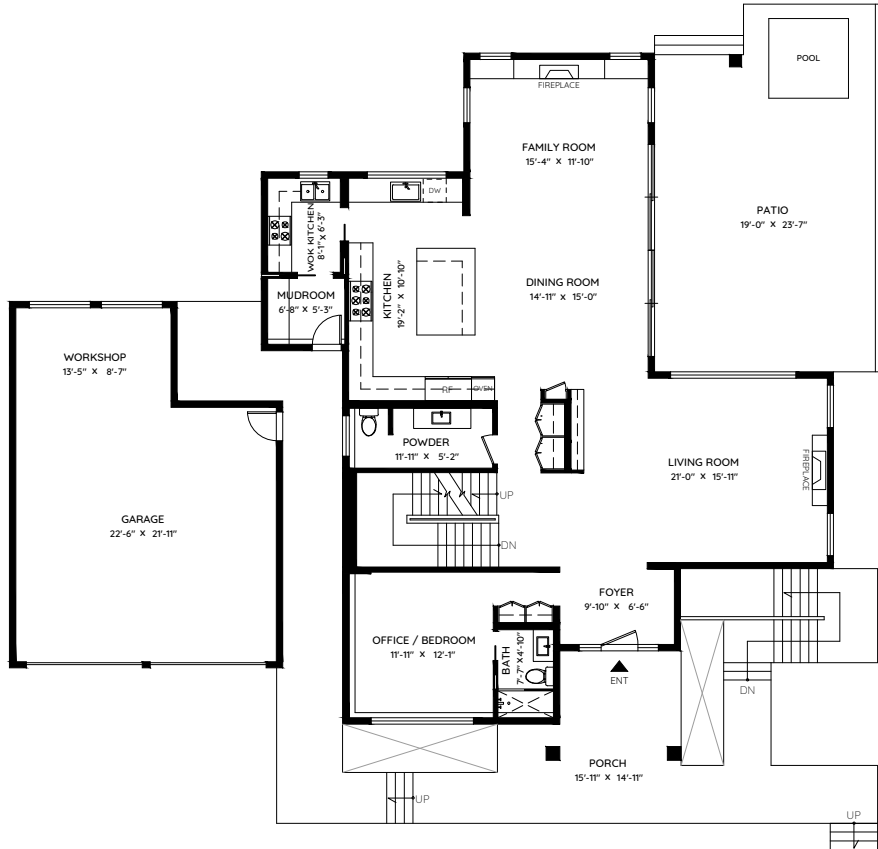


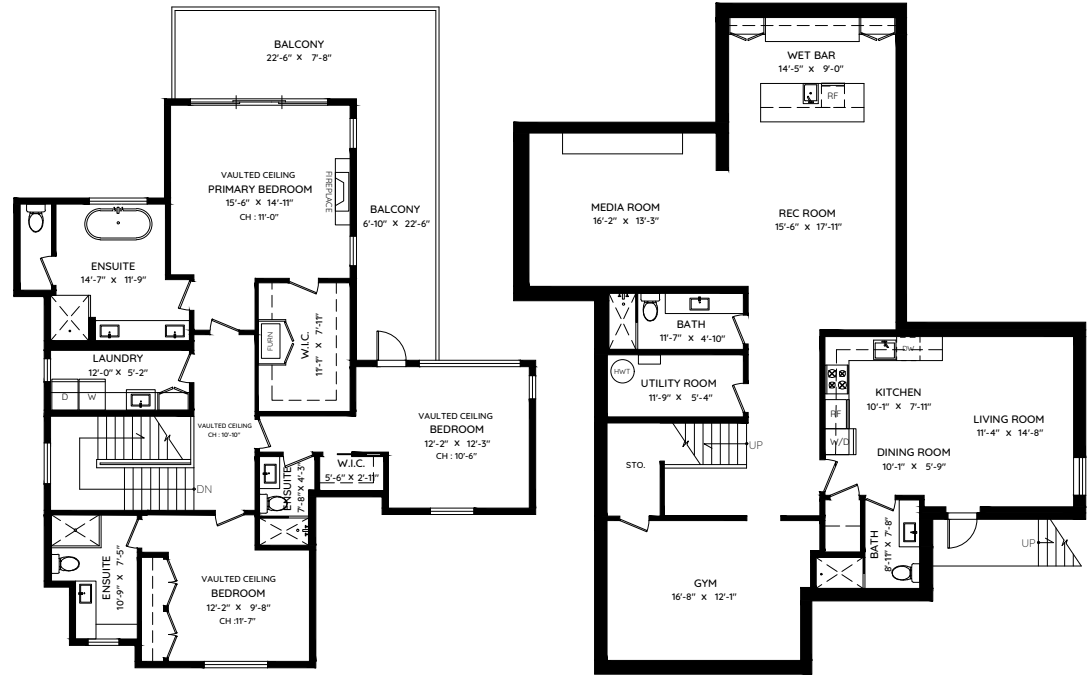
# 510 ROSLYN BOULEVARD

NORTH VANCOUVER, BC

MAIN	1,811 SQ.FT.	GARAGE	680 SQ.FT.
UPPER	1,403 SQ.FT.	PORCH	337 SQ.FT.
LOWER	1,811 SQ.FT.	PATIO	610 SQ.FT.
<b>TOTAL</b>	<b>5,025 SQ.FT.</b>	<b>BALCONY</b>	<b>344 SQ.FT.</b>
	<b>TOTAL</b>	<b>TOTAL</b>	<b>1,971 SQ.FT.</b>



**MAIN FLOOR**  
1,811 SQ.FT.  
CH: 9'-5"



**UPPER FLOOR**  
1,403 SQ.FT.  
CH: 8'-0"

**LOWER FLOOR**  
1,811 SQ.FT.  
CH: 8'-8"



0ft 3ft 5ft 10ft

The floor plan and the measurements are approximate within +/- 2% and are to be used for advertising usage only. May include unfinished area. Not suitable for architectural or construction. E&O Insured