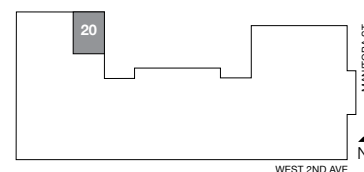
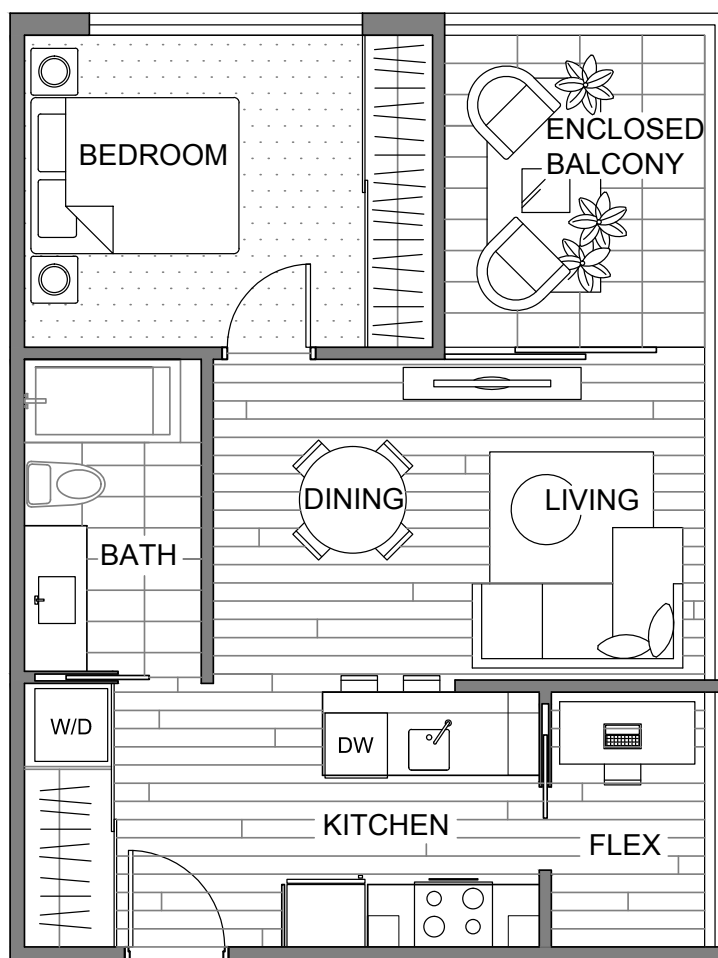




FLOORPLAN B

695 sq.ft. | 1 bedroom + den | 1 bath

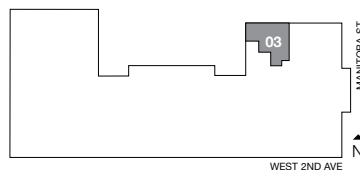
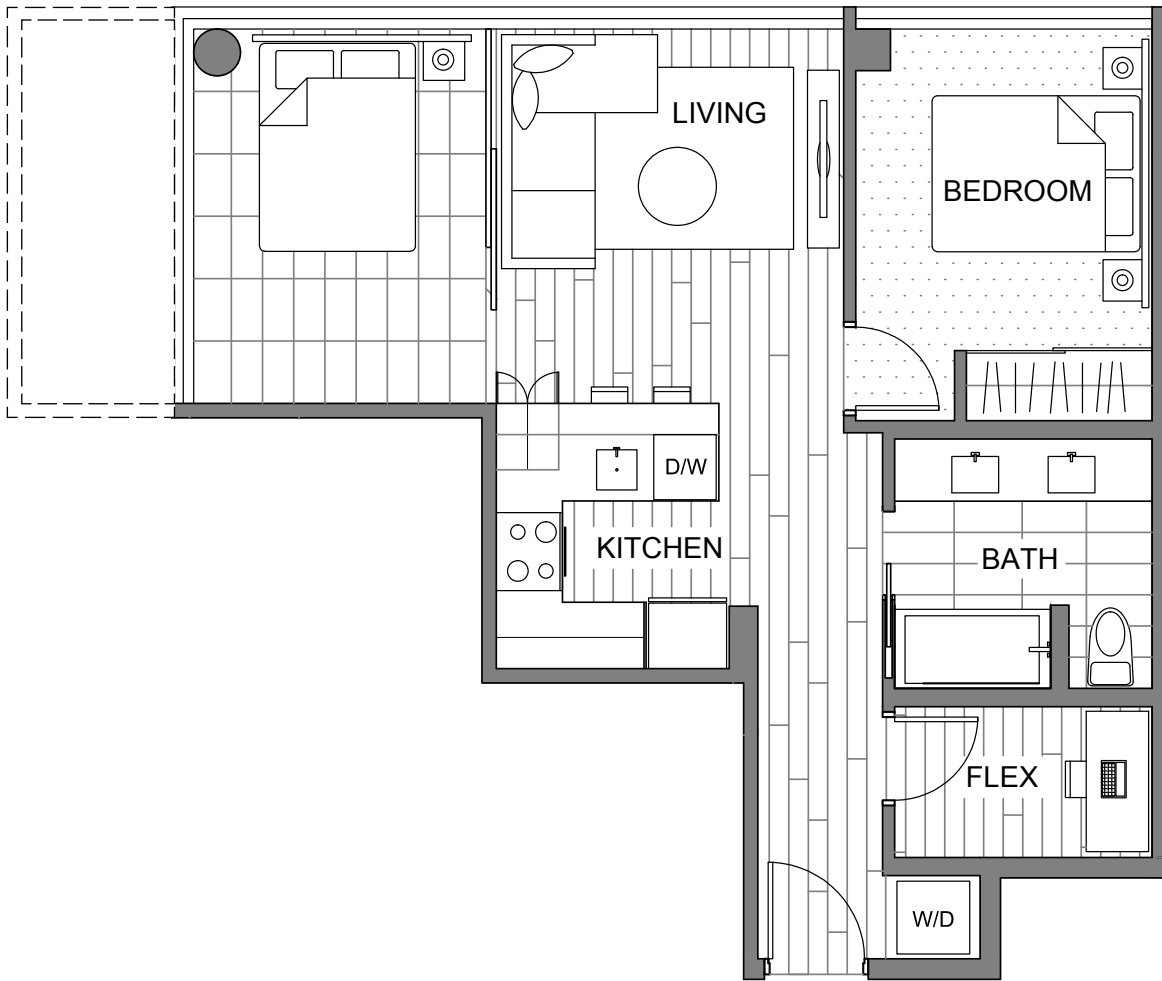


LEVEL 2

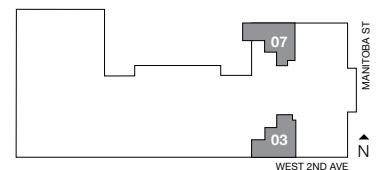


FLOORPLAN B2

712-724 sq.ft. | 1 bedroom + den | 1 bath | 65 sq.ft. balcony (07 homes only)



LEVEL 6

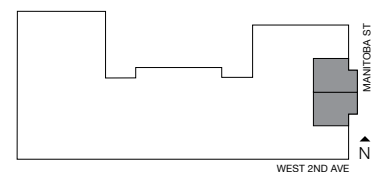
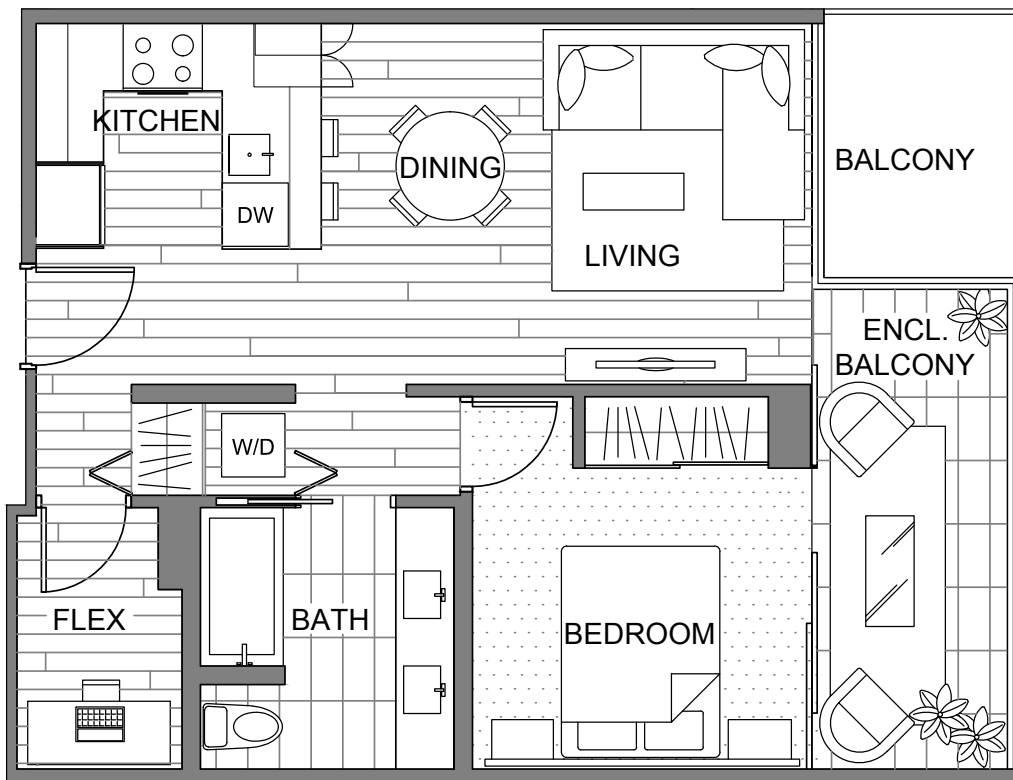


LEVELS 7-13



FLOORPLAN B3

721 sq.ft. | 1 bedroom + den | 1 bath | 47 sq.ft. balcony



LEVELS 2-15

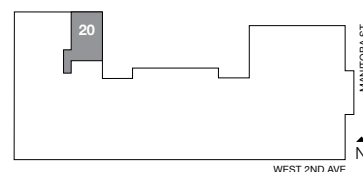
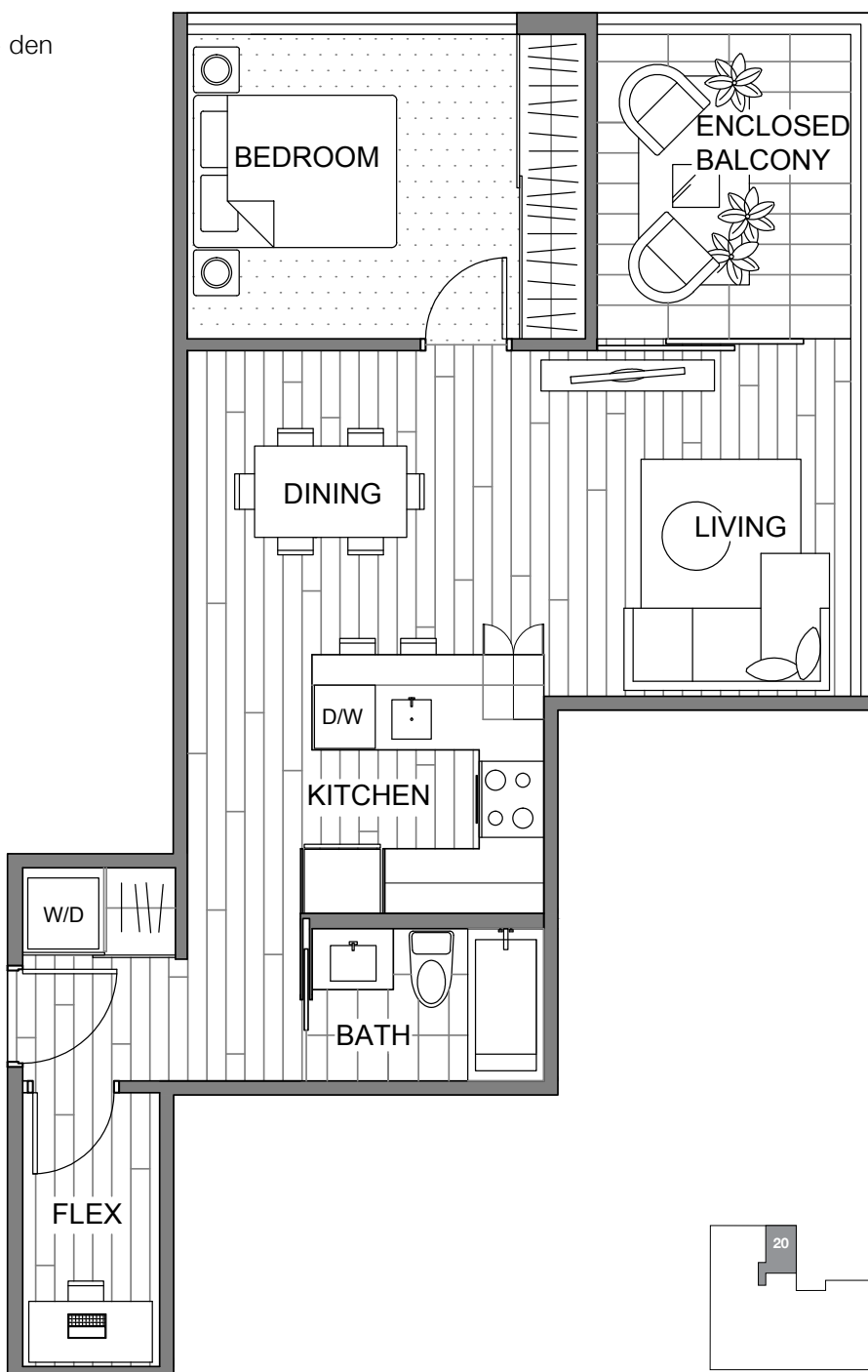


FLOORPLAN B4

776 sq.ft.

1 bedroom + den

1 bath



LEVELS 3-5