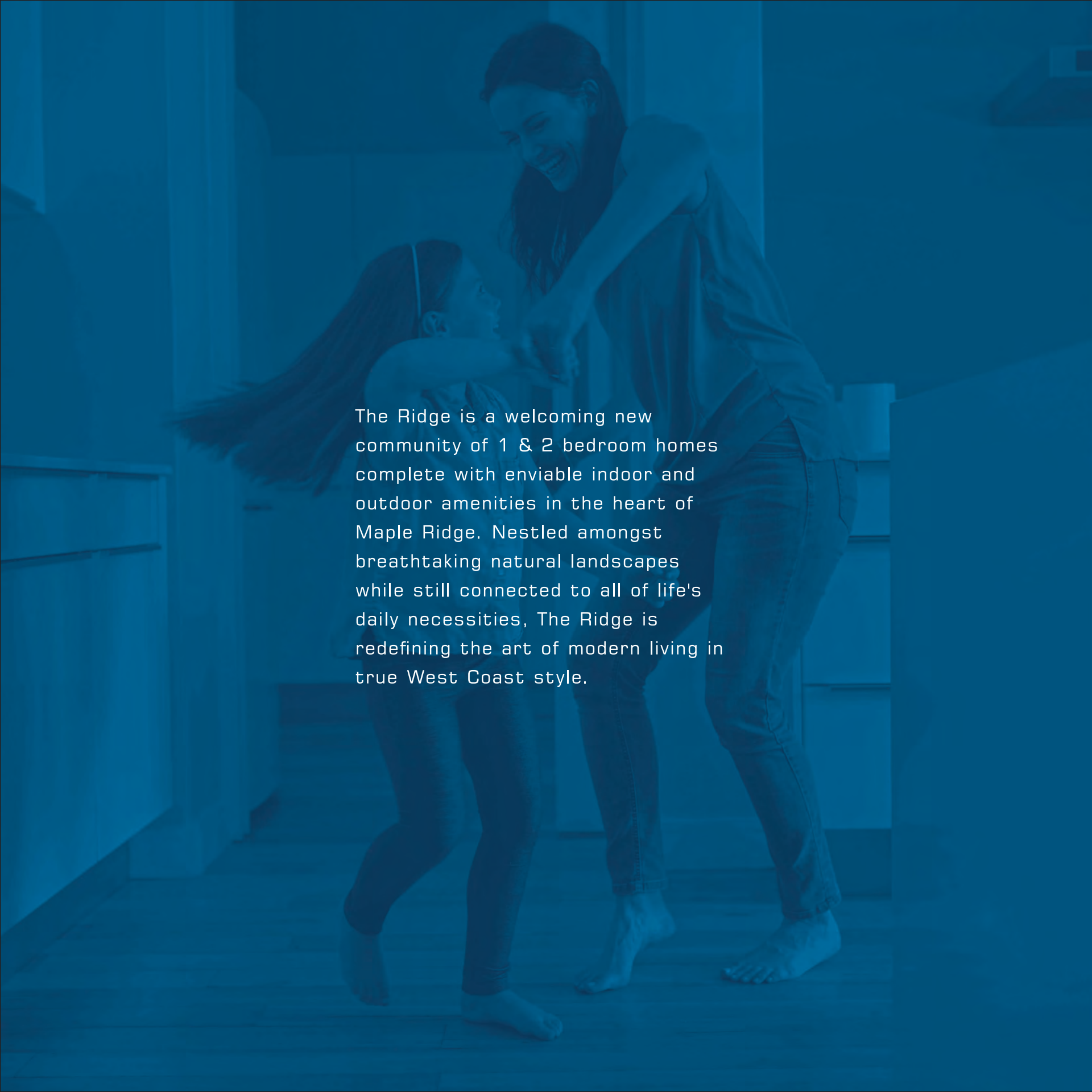




REDEFINED LIVING





The Ridge is a welcoming new community of 1 & 2 bedroom homes complete with enviable indoor and outdoor amenities in the heart of Maple Ridge. Nestled amongst breathtaking natural landscapes while still connected to all of life's daily necessities, The Ridge is redefining the art of modern living in true West Coast style.



REDEFINE LIVING IN THE HEART OF MAPLE RIDGE



WHERE CITY AND NATURE MEET



Bounded by the mighty Fraser River and the picturesque Coast Mountains, Maple Ridge is home to quintessential West Coast scenery and expansive outdoor wilderness just waiting to be explored. But don't let its natural appearance fool you, within this family-friendly community is a wide array of urban amenities and shops, a walkable town centre bursting with local flavour and a vibrant arts and culture scene. Plus, with the West Coast Express and major highway routes nearby, you are always connected to anywhere you need to be.





**ADVENTURE
WITHIN
REACH**





MAP LEGEND

RECREATION AND ENTERTAINMENT

- 1. Maple Ridge Leisure Centre
- 2. Greg Moore Youth Centre
- 3. Garibaldi Art Club
- 4. The ACT Arts Centre & Art Gallery
- 5. The Beast - Mechanical Horse Clock
- 6. Memorial Peace Park
- 7. Maple Ridge Public Library
- 8. Telosky Stadium & Thomas Haney Youth Action Park
- 9. Pioneer Park
- 10. Revs Maple Ridge
- 11. Chances Maple Ridge
- 12. Maple Ridge Museum & Community Archives
- 13. Port Haney Wharf
- 14. Maple Ridge Golf Course
- 15. Golden Ears Provincial Park

SHOPPING AND GROCERIES

- 1. Maple Ridge Square
- 2. Valley Fair Mall
- 3. Haney Place Mall
- 4. Lougheed Plaza

EDUCATION

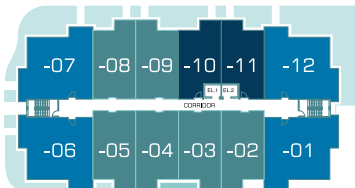
- 1. Laugh and Learn Daycare
- 2. Golden Ears Elementary
- 3. Thomas Haney Secondary
- 4. Garden Gate Preschool
- 5. St. Patrick's School
- 6. Maple Ridge Elementary (French Immersion K-3)
- 7. Eric Langton Elementary (French Immersion 4-7)
- 8. Maple Ridge Secondary (French Immersion 8-12)



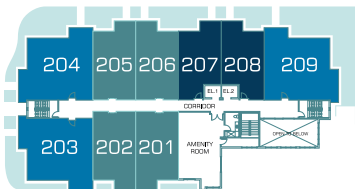
FLOOR PLANS

A HOME FOR EVERYONE

Choose from one of three different 1 & 2 bedroom layouts, ranging from 690 sq ft to over 1,000 sq ft in size. No matter which selection you make, at The Ridge, you'll come home to a thoughtfully designed space with an open concept floorplan and spacious decks that extend living from inside to out.



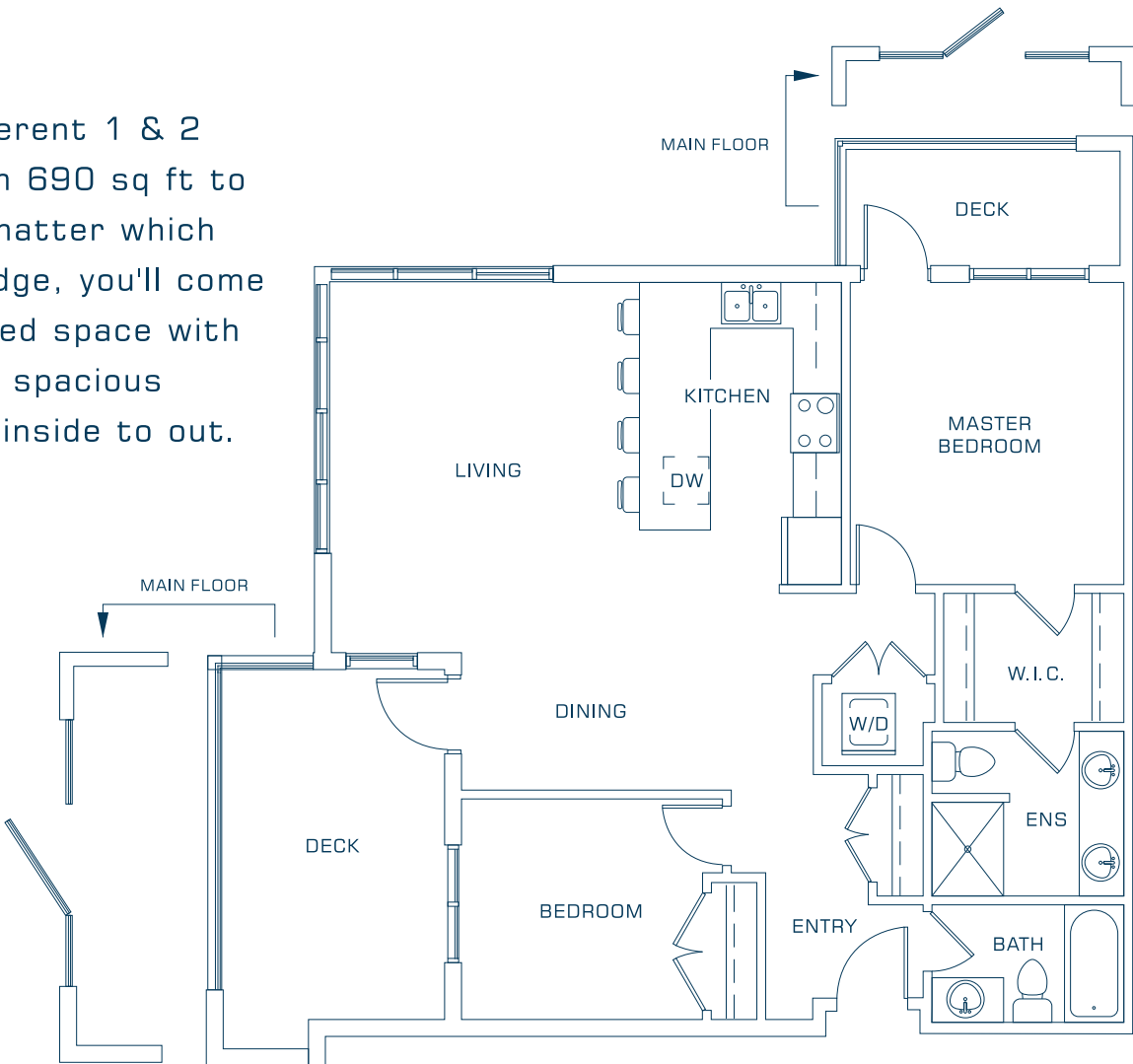
3 - 5 / F



2 / F

- PLAN A
- PLAN B
- PLAN C

In the continuing effort to improve our homes, the developer reserves the right to modify plans and specifications without notice. Dimensions, sizes, specifications, layouts and materials are approximate only and subject to change without notice. E.&O.E.

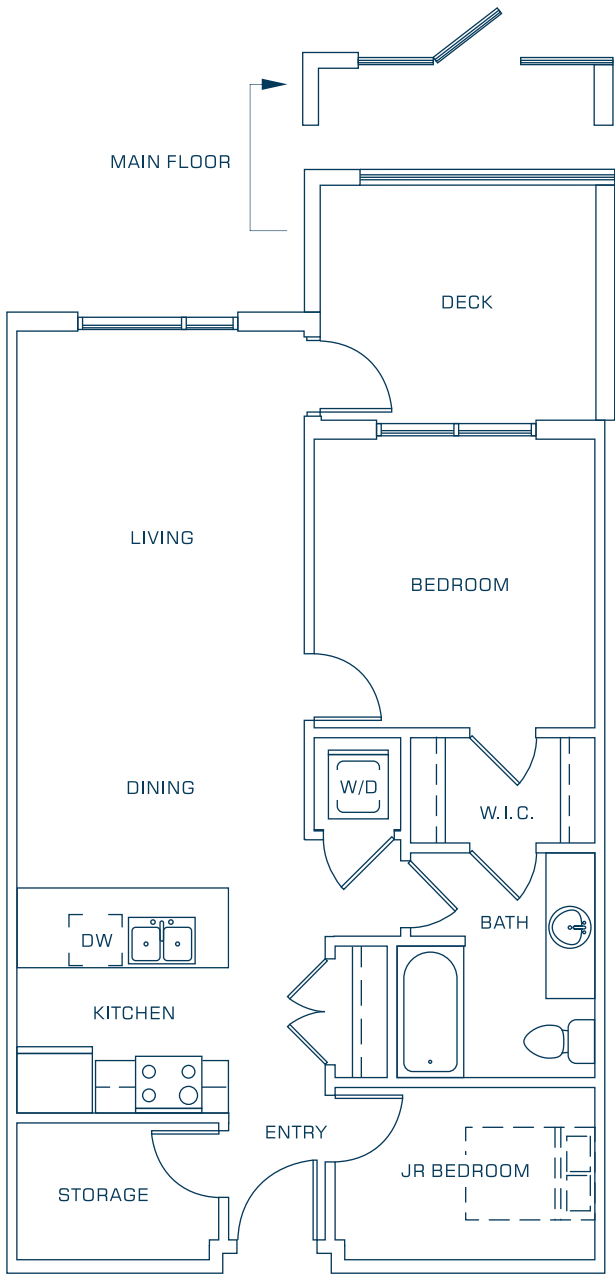


PLAN A
2 BEDROOM

1,026 SQ. FT.

- Living - 13'7" X 16'10"
- Dining - 11'9" X 7'11"
- Kitchen - 8'8" X 13'7"
- Master Bedroom - 11'7" X 12'5"

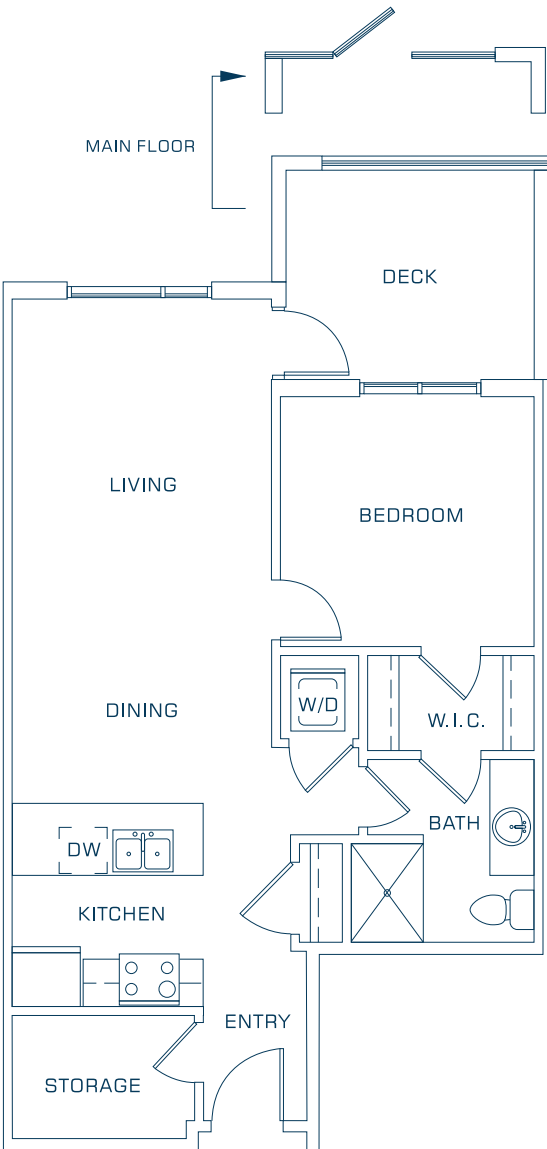
- Bedroom - 10' 11" X 10'2"
- Deck 1 - 10'1" X 15'6"
- Deck 2 - 9'0" X 7'0"



PLAN B
JR 2 BEDROOM

764 SQ. FT.

- Living / Dining - 11'6" X 21'6"
- Kitchen - 11'6" X 8'8"
- Bedroom - 11'0" X 10'8"
- JR Bedroom - 10'4" X 8'2"
- Storage - 8'2" X 5'10"
- Deck - 10'7" X 7'11"



PLAN C
1 BEDROOM

687 SQ. FT.

- Living / Dining - 11'4" X 21'6"
- Kitchen - 11'4" X 8'8"
- Bedroom - 11'2" X 11'1"
- Storage - 8'2" X 5'10"
- Deck - 11'2" X 9'5"

FORM & FUNCTION

Open and bright layouts and perfectly proportioned spaces make the homes at The Ridge suited for gathering with friends, as well as for your family's everyday comfort.

SPACES FOR GATHERING

Residents at The Ridge will find staying active a breeze thanks to an on-site playground and indoor fitness centre. When it comes to hosting, there's a spacious 2-level amenity room complete with a comfortable lounge that's perfect for any occasion.

EVERYDAY CONVENIENCE

The Ridge is equipped with high-efficiency counterweight elevators for a smoother and faster riding experience, meaning less time spent waiting while you go about your busy day.

EFFORTLESS STYLE

From premium porcelain tiling, to designer-selected colour schemes and artful exterior stonework, these homes embody an effortless style that's built to last, both inside and out.

ROOFTOP GARDEN TERRACE

Whether dining al fresco or simply taking a moment to escape and enjoy the view, The Ridge's rooftop garden terrace gives you all the space you need to relax and unwind, complete with communal gardens, lounge spaces and an outdoor firepit.

STYLISH BY DESIGN, THOUGHTFUL IN FUNCTION



REDEFINED LIVING

- 54 modern homes in Maple Ridge, surrounded by breathtaking natural landscapes while still connected to all of life's daily necessities
- Situated within minutes to major highway routes and the West Coast Express for quick and convenient access to downtown Vancouver
- Striking exteriors inspired by the West Coast and finished in stonework accents and hardie paneling
- A complete suite of building amenities provides social spaces for gathering with families or friends, and options to keep you active all year-round
- Equipped with high-efficiency counterweight elevators for a faster and smoother riding experience
- Each home comes complete with private balconies that extend living from indoors to out

SOUGHT-AFTER BUILDING AMENITIES

- Expansive two-level indoor amenity room featuring a comfortable lounge space for hosting any type of gathering and a professionally-equipped fitness centre
- On-site exterior playground surrounded by beautiful landscaping to welcome you home
- Expansive rooftop garden terrace complete with communal gardens, plenty of seating and outdoor firepit

FEATURES LIST

In the continuing effort to improve our homes, the Developer reserves the right to modify plans and specifications without notice. E.&O.E.

INVITING INTERIORS

- Choose from a selection of 1 & 2 bedroom layouts, ranging from 690 sq ft to over 1,000 sq ft in size
- Come home to an open and inviting space, with contemporary finishes and thoughtful touches
- Over-height 9 ft ceilings in the main living areas provide a bright and airy feel throughout
- Let the light in through the expansive windows
- Sought-after extras include a professionally designed living room fireplace
- A smart combination of premium flooring materials including resilient, yet stylish laminate wood plank and premium porcelain tile in bathrooms
- Choose from two designer-selected colour schemes to personalize your home: Cool & Warm

REJUVENATING BATHROOMS

- Relax and rejuvenate in spa-like bathrooms with high-quality finishes that are built to last like porcelain floor tiling and quartz countertops
- Luxurious master ensuite showers encased in glass, complete with porcelain tiling and an over-sized shower head with single-lever fixture
- Custom-built vanities composed of stylish cabinetry and accented by polished chrome pulls

GOURMET KITCHENS

- Form and function come together in the contemporary gourmet kitchens
- Dual-tone cabinetry with flat panel doors provide a multitude of stylish storage
- Sleek quartz countertops with complimenting backsplash
- Luxurious accents include chrome pulls, plus soft close drawers and doors
- A designer lighting package illuminate all the right areas
- Large stainless-steel under-mount sink with polished chrome kitchen faucet, extractable spray and in-sink waste disposal
- Stainless-steel appliance package, complete with a sleek fridge, electric range, dishwasher and built-in microwave. Select homes have a paneled fridge and dishwasher for a more unified look

COMFORT & SAFETY

- Carefully crafted by Mortise Group, a trusted developer with over 25 years of expertise building homes throughout the Lower Mainland
- Safety features in every home like secure fob entry systems, deadbolt locks and door viewers
- Energy-efficient windows and doors, as well as low-energy consumption appliances
- High-end front-loading washers and dryers
- Enjoy year-round comfort with Energy Star, Low-E windows
- Rough-in for central air conditioning (AC unit upgrade) to customize your space
- Backed by a comprehensive 2/5/10 new home warranty by WBI:
 - 2 years on materials and labour
 - 5 years on building envelope
 - 10 years on structure



**DELIVERING
RESULTS THAT
EXCEED
EXPECTATIONS.**

BALJIT JOHAL
President & CEO
Mortise Group

B. Johal

MORTISE

GROUP OF COMPANIES



A FAMILY TRADITION

Mortise Group of Companies is one of the leading developers in BC with a diverse portfolio spanning across metropolitan communities in the Lower Mainland, and is dedicated to developing flawless, high quality and sustainable homes.

WWW.MORTISEGROUP.COM

MORTISE

GROUP OF COMPANIES

11917 Burnett Street, Maple Ridge

info@theridgebymortise.com

www.TheRidgeByMortise.com | 604.720.7478

