

Colleen Almrud

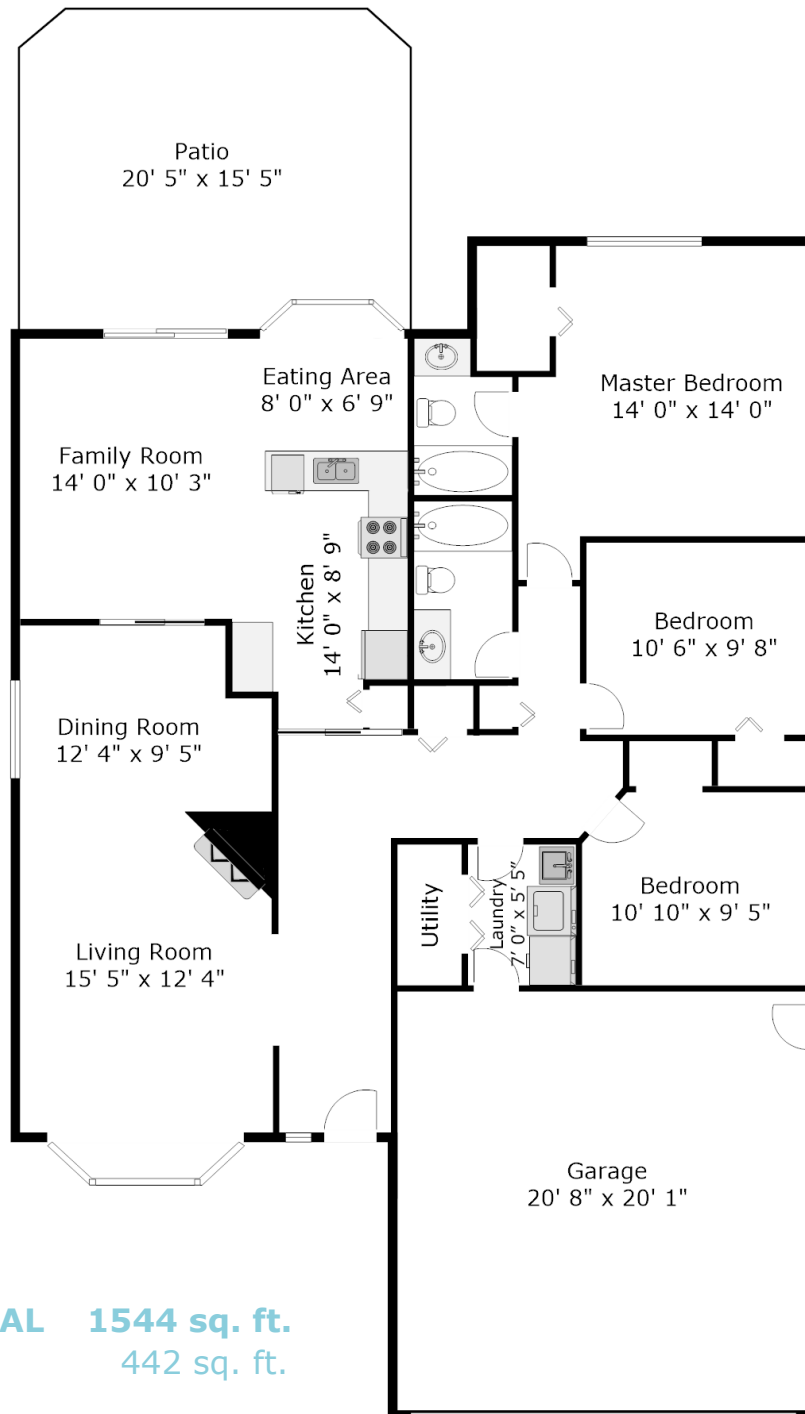
778.688.5972



Natalie Walker

604.868.0028
Personal Real Estate Corporation

5915 49 Ave.
Ladner, BC



GRAND TOTAL 1544 sq. ft.
Garage 442 sq. ft.

Measurements and floor plan are approximate and are to be used for advertising purposes only.
Not suitable for construction or architectural use.
Measured July 2017.