

FOR LEASE: 402 - 329 Railway St.



PARADIGM GROUP
Commercial Real Estate Services

Jordan Armstrong

Partner

778.899.2614

Jordan@paradigmvancouver.com

E. & O.E.: All information contained herein comes from sources we deem reliable. However, we make no guarantees as to the accuracy of any information contained herein and are not responsible for any discrepancies. All measurements herein should be considered approximate estimations. No information herein forms the basis of any contract. All information should be independently verified. Renderings are artist concept only. Information is subject to change without notice. Paradigm Group Commercial Real Estate Services, Vancouver, British Columbia



FOR LEASE:

402 - 329 Railway Street

Don't miss the opportunity to lease this beautifully renovated space in a fully upgraded building, designed to meet the needs of modern creative professionals. With a range of premium amenities and breathtaking water and mountain views, this space offers an inspiring and functional environment to elevate your work experience.

- Bright and versatile suite with a large open work area, conference room, 2 private offices (1 is a fully networked & sound-dampened editing suite), kitchenette (with dishwasher), and in-suite storage.
- Completely renovated modern suite with stunning water and mountain views, full-length glass glazed offices, exposed brick, original cedar beams, dedicated HVAC, operable windows, Cat6a connectivity, and designer furniture and lighting (available for purchase).
- Building amenities include a bike locker, shower, communal loading dock, and freight elevator.

Address :

402-329 Railway St.,
Vancouver, B.C.

Size:

1,922 sq/ft

Lease Type:

Sublease

Zoning:

I-4: creative industrial

Net Rate:

Contact Us

Additional Rent:

\$15.50PSF (est 2024)



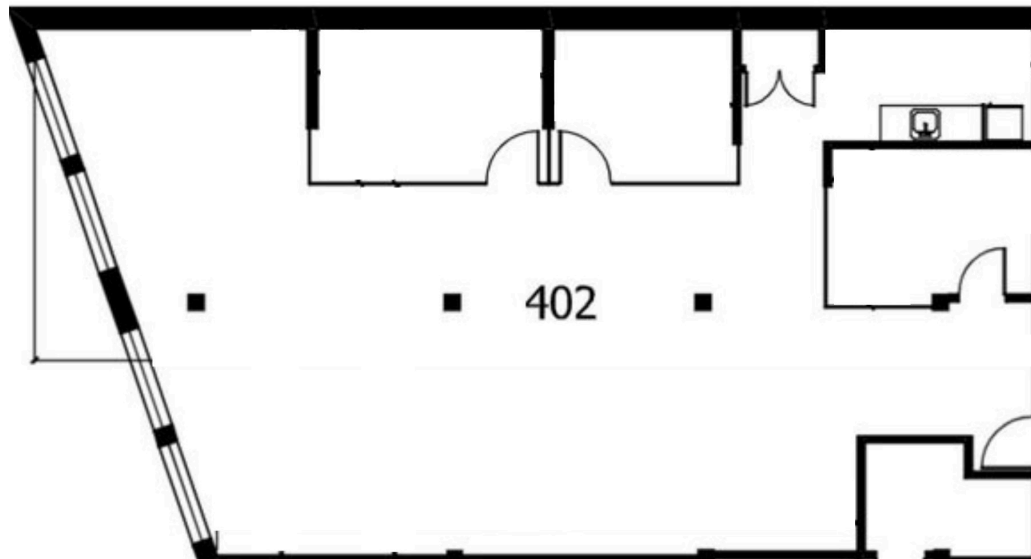
FOR LEASE: 402-329 RAILWAY ST

The Building

Experience the vibrant community of 329 Railway St, situated in the heart of Vancouver's trendiest neighborhood, Railtown. Join an esteemed creative community alongside industry leaders such as Aritzia, Bocci, Herschel, Bensen, and Inform. Indulge in the city's finest culinary delights at Railtown Cafe, Belgard Kitchen, Ask For Luigi, St. Lawrence, and Pallet Coffee.

Conveniently located just minutes away from Gastown, Downtown, and major transit routes, this location truly offers the perfect blend of accessibility and inspiration.

Floor Plan



PARADIGM GROUP - COMMERCIAL REAL ESTATE SERVICES



Location

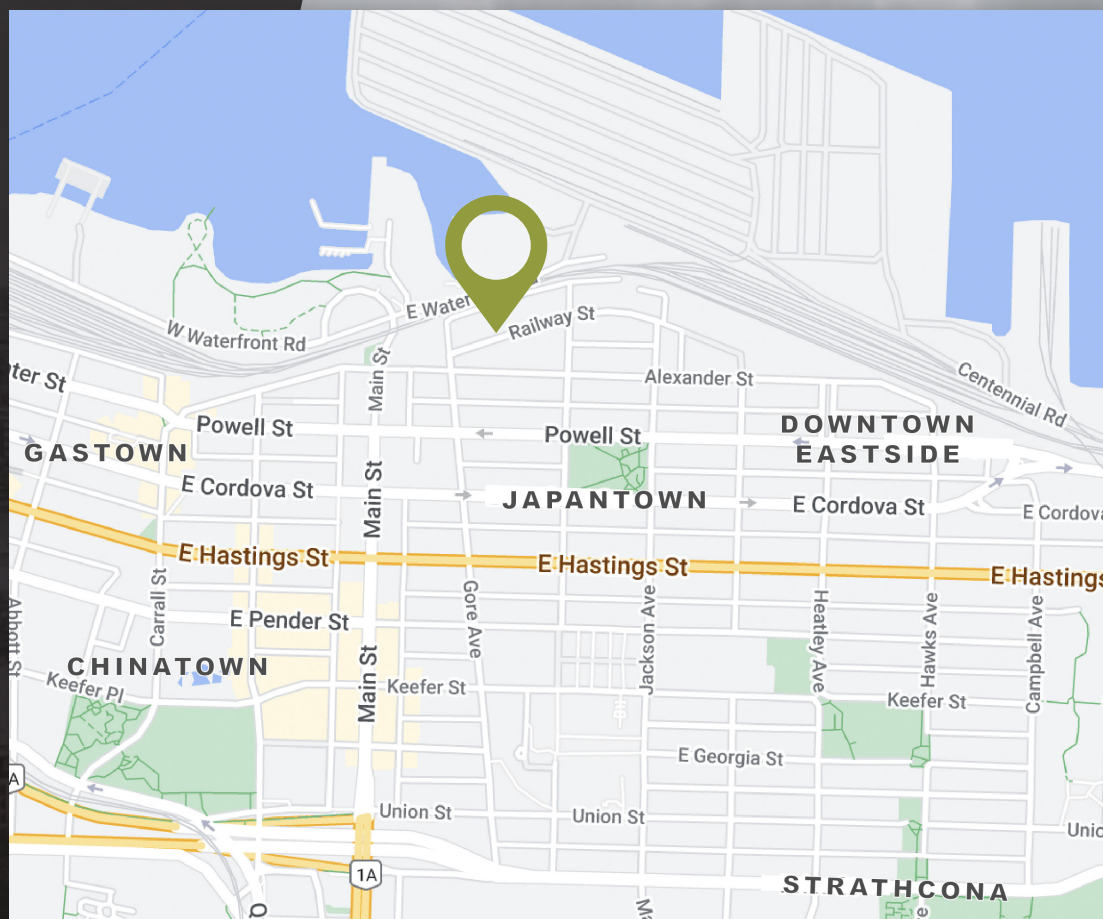
Discover the vibrant allure of Railtown, Vancouver's coveted creative neighbourhood. This dynamic district, nestled between Gastown and Strathcona, boasts a rich industrial heritage and a thriving creative scene. With its trendy eateries, stylish boutiques, and proximity to Downtown Vancouver, Railtown offers an ideal blend of urban charm and convenience. Embrace the opportunity to be part of a flourishing community that seamlessly combines historic character with modern innovation.

Join some of Vancouver's top businesses in making Railtown your headquarters:

- Bocci Manufacturing & Design
- Aritzia
- Inform Interiors & Bensen
- Herschel Supply & Co

Enjoy this city's top culinary fare such as:

- Pallet Coffee Roasters
- Railtown Cafe
- Belgard Kitchen
- Ask For Luigi



PARADIGM GROUP
Commercial Real Estate Services

Jordan Armstrong
778.899.2614
Jordan@paradigmvancouver.com



604.398.8836

203-2590 Granville St
Vancouver, B.C. V6H3G8

WWW.PARADIGMVANCOUVER.COM

E. & O.E.: All information contained herein comes from sources we deem reliable. However, we make no guarantees as to the accuracy of any information contained herein and are not responsible for any discrepancies. All measurements herein should be considered approximate estimations. No information herein forms the basis of any contract. All information should be independently verified. Renderings are artist concept only. Information is subject to change without notice. Paradigm Group Commercial Real Estate Services, Vancouver, British Columbia