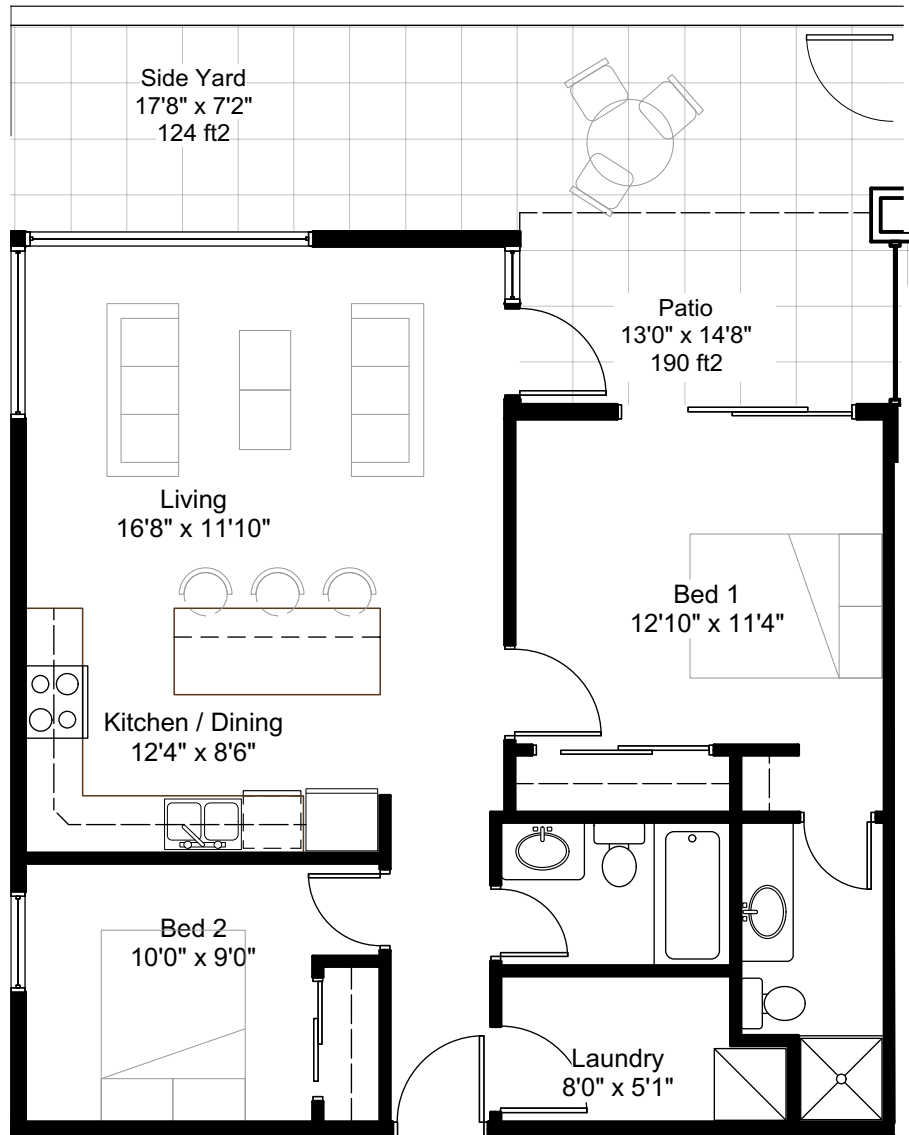


PROSPECT

AT HARBOURVIEW - NANAIMO



NORTH BUILDING

Unit Type: **C**

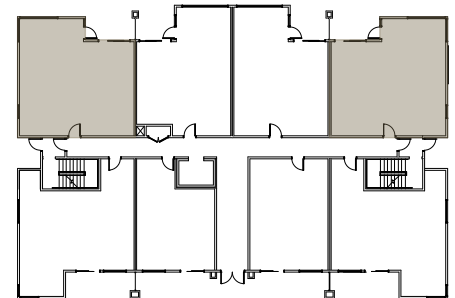
Floor Area: 886 ft²

Patio Area: 314 ft²

Bed: 2 Bed

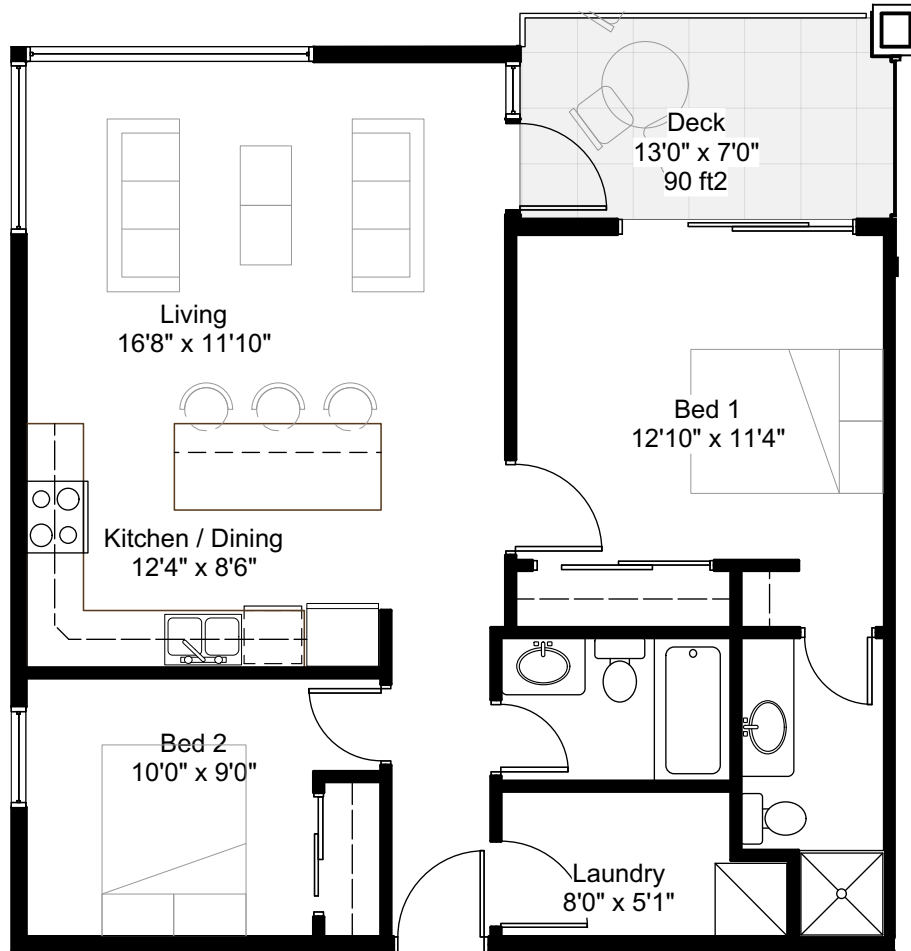
Bath: 2 Bath

Unit Number: 105, 108



PROSPECT

AT HARBOURVIEW - NANAIMO



NORTH BUILDING

Unit Type: **C**

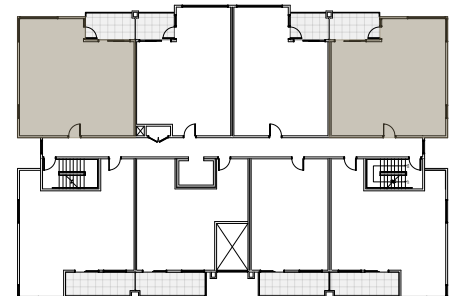
Floor Area: 886 ft²

Deck Area: 90 ft²

Bed: 2 Bed

Bath: 2 Bath

Unit Number: 205, 208, 305, 308, 405, 408, 503, 506
sold sold sold sold sold sold sold



Level: 2, 3, 4, 5

