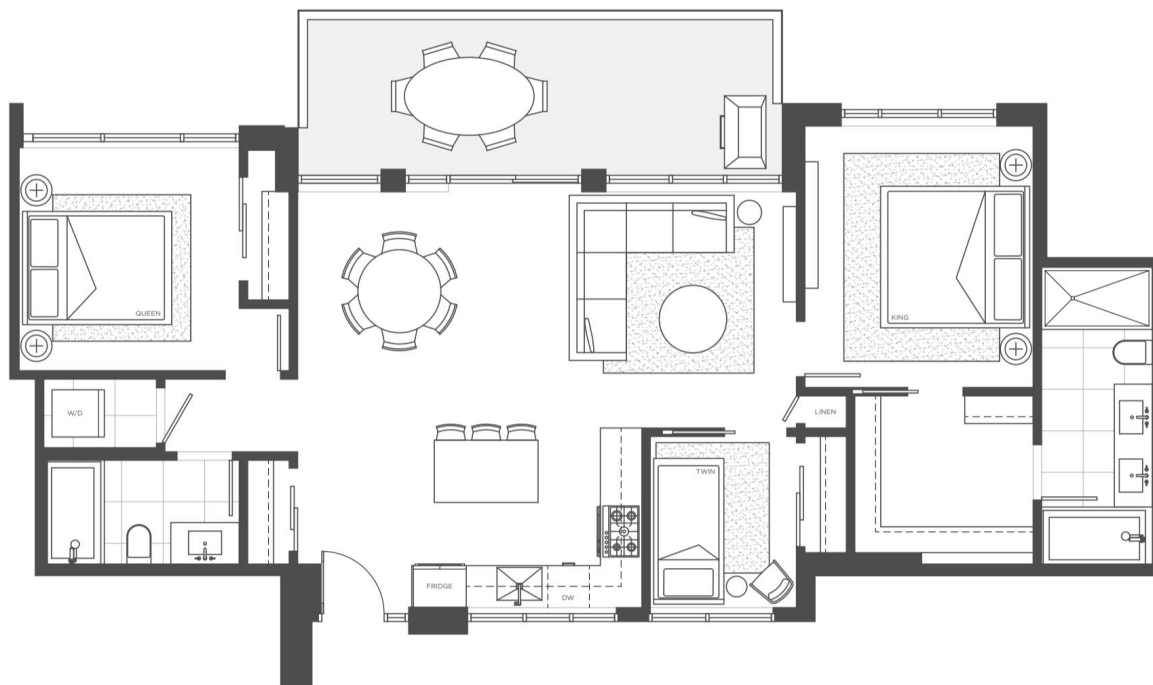


TOWNHOME PLAN M

3 BED
2 BATH

Indoor 1,158 sqft
Outdoor 308 sqft
Total 1,466 sqft

SMITH *E* farrow



DRAFT

LEVEL 2



LEVEL 1



In the interest of continuing product improvement, the Developer reserves the right to make modifications and changes to floorplans, project design, materials and specifications. This is not an offering for sale. Any such offering can only be made by way of Disclosure Statement. E&OE. 2021.01.11



TOWNHOME
PLAN
L

2 BED + DEN

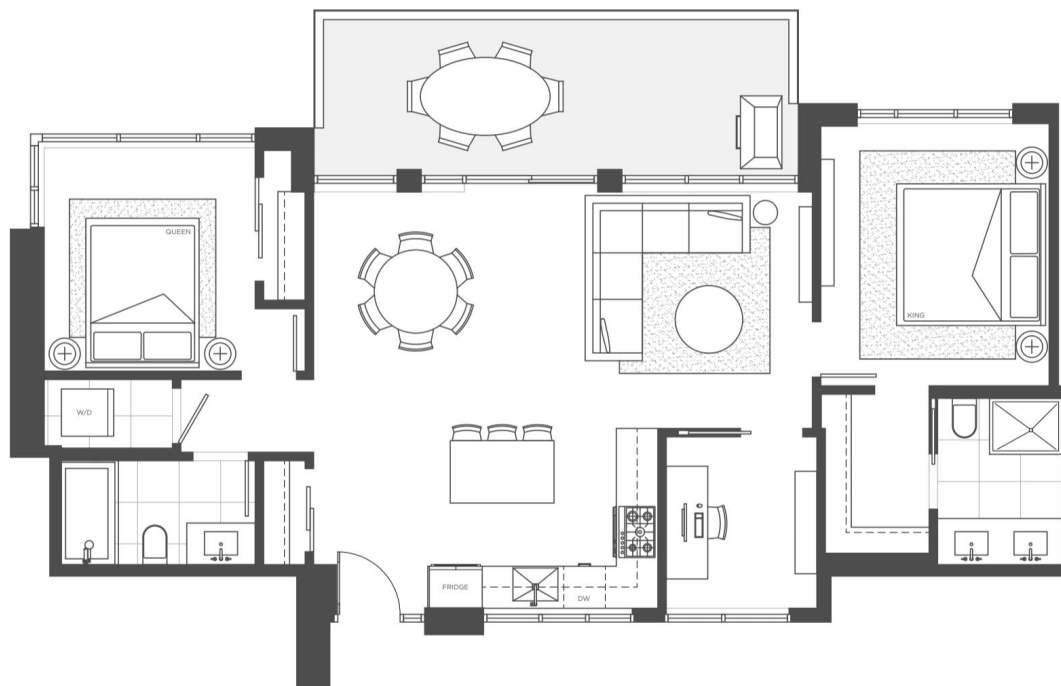
2 BATH

Indoor 1,076 - 1,085 sqft

Outdoor 305 - 307 sqft

Total 1,381 - 1,392 sqft

SMITH *E* farrow



LEVEL 2



LEVEL 1



DRAFT

In the interest of continuing product improvement, the Developer reserves the right to make modifications and changes to floorplans, project design, materials and specifications. This is not an offering for sale. Any such offering can only be made by way of Disclosure Statement. E&OE. 2021.01.11

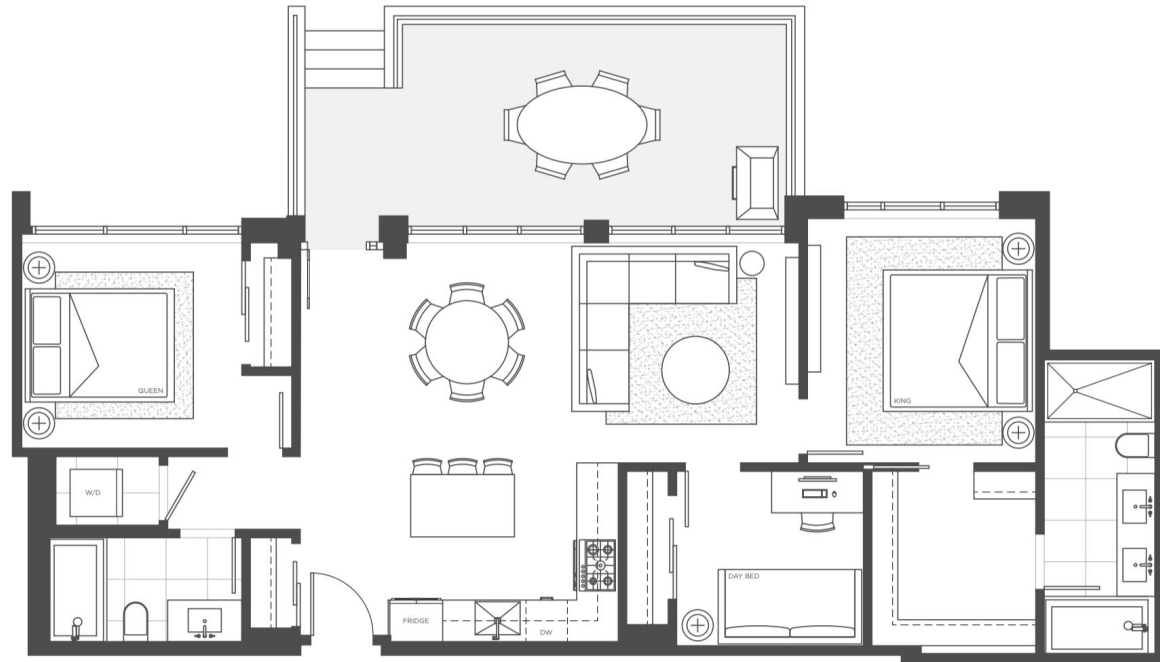


TOWNHOME
PLAN
K

2 BED + DEN
2 BATH

Indoor 1,116 sqft
Outdoor 274 sqft
Total 1,390 sqft

SMITH *E* farrow



LEVEL 2



LEVEL 1



DRAFT

In the interest of continuing product improvement, the Developer reserves the right to make modifications and changes to floorplans, project design, materials and specifications. This is not an offering for sale. Any such offering can only be made by way of Disclosure Statement. E&OE, 2021.01.11

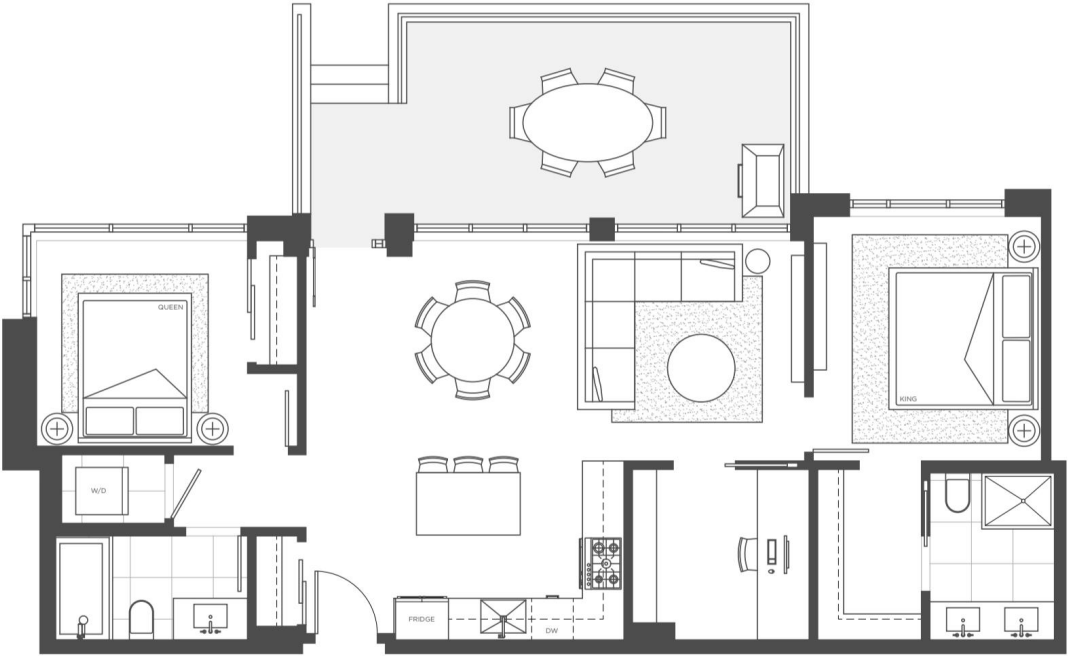


TOWNHOME
PLAN
J

2 BED + DEN
2 BATH

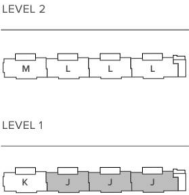
Indoor	1,033 - 1,038 sqft
Outdoor	273 - 276 sqft
Total	1,306 - 1,314 sqft

SMITH & farrow



DRAFT

In the interest of continuing product improvement, the Developer reserves the right to make modifications and changes to floorplans, project design, materials and specifications. This is not an offering for sale. Any such offering can only be made by way of Disclosure Statement. E&OE. 2021.01.11



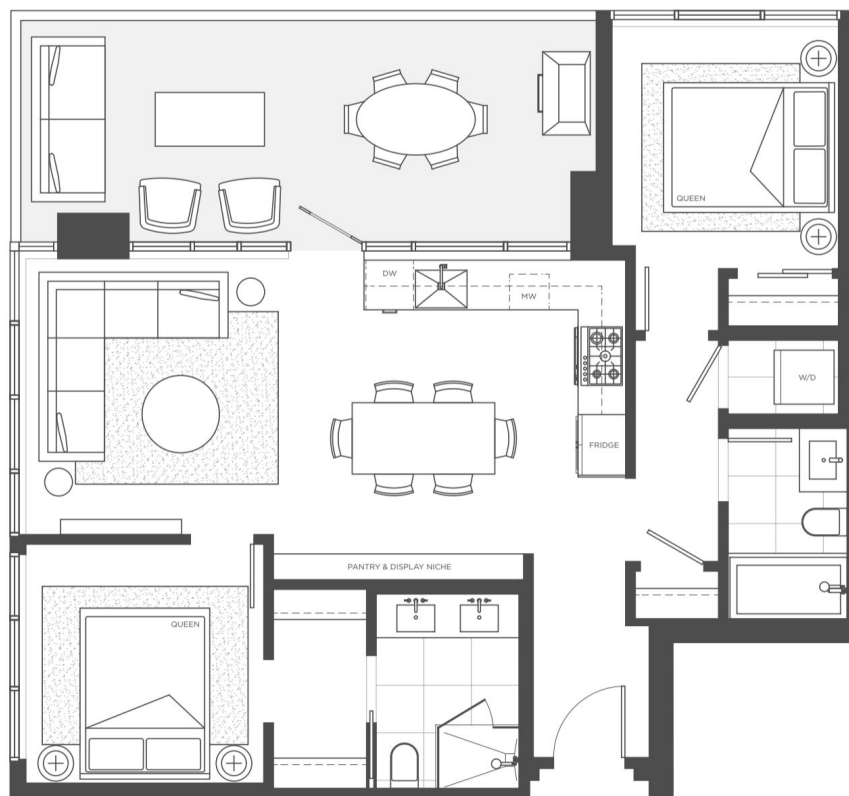
PLAN H

2 BED

2 BATH

Indoor living 875 sqft
Outdoor living 233 sqft
Total 1,108 sqft

SMITH & farrow



DRAFT

In the interest of continuing product improvement, the Developer reserves the right to make modifications and changes to floorplans, project design, materials and specifications. This is not an offering for sale. Any such offering can only be made by way of Disclosure Statement. E&OE. 2021.01.11

LEVEL 3-44

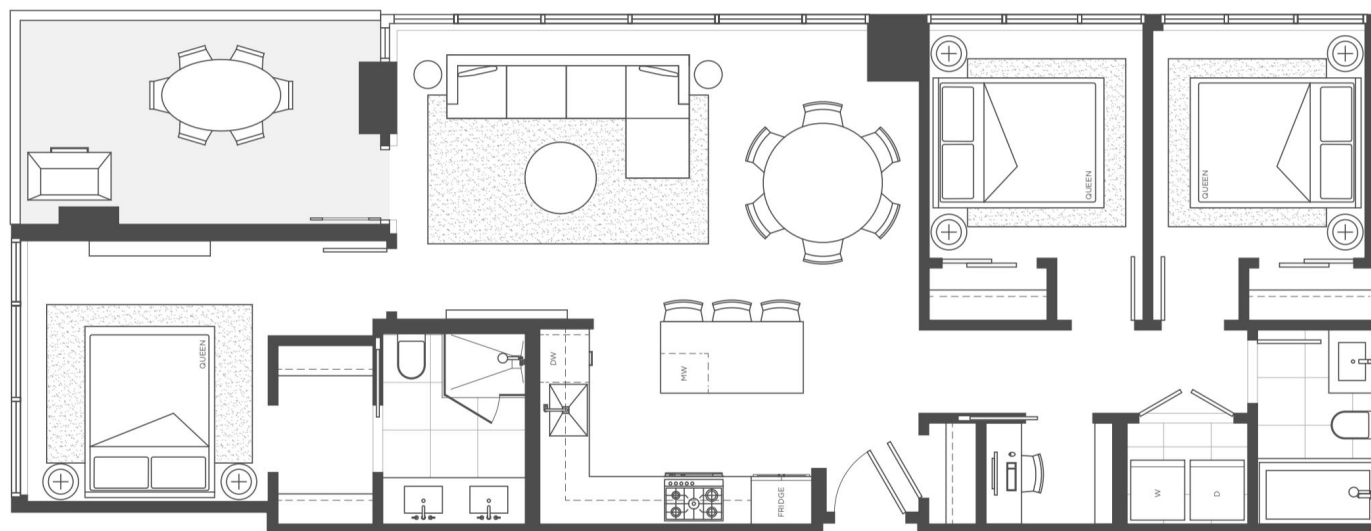


PLAN G3

3 BED + FLEX
2 BATH

Indoor living 1,105 sqft
Outdoor living 132 sqft
Total 1,237 sqft

SMITH & farrow



DRAFT

In the interest of continuing product improvement, the Developer reserves the right to make modifications and changes to floorplans, project design, materials and specifications. This is not an offering for sale. Any such offering can only be made by way of Disclosure Statement. E&OE. 2021.01.11

LEVEL 3-44

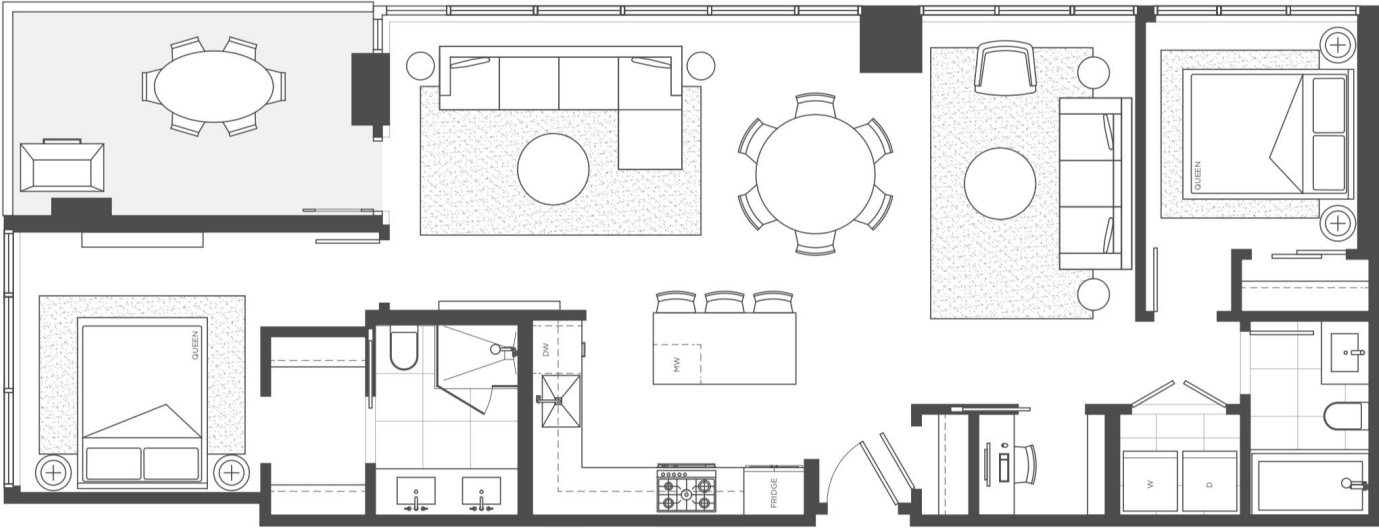


PLAN G

2 BED + FLEX
2 BATH

Indoor living	1,105 sqft
Outdoor living	132 sqft
Total	1,237 sqft

SMITH & farrow



DRAFT

In the interest of continuing product improvement, the Developer reserves the right to make modifications and changes to floorplans, project design, materials and specifications. This is not an offering for sale. Any such offering can only be made by way of Disclosure Statement. E&OE, 2021.01.11

LEVEL 3-44

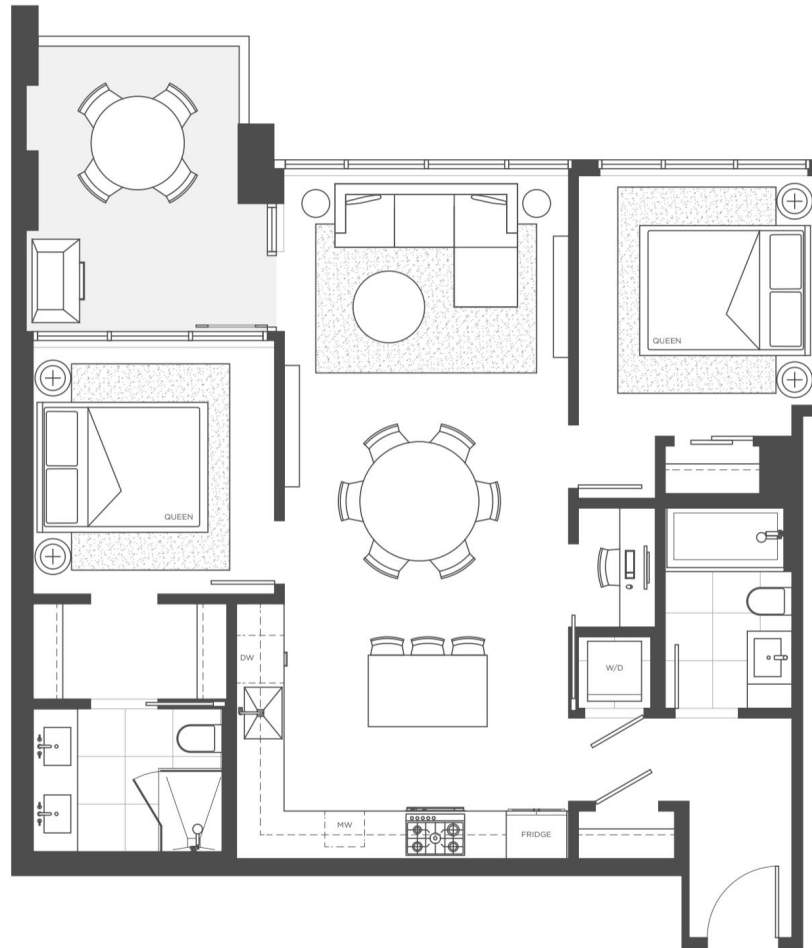


PLAN F

2 BED + FLEX
2 BATH

Indoor living	952 sqft
Outdoor living	126 sqft
Total	1,078 sqft

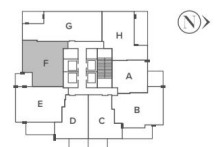
SMITH & farrow



DRAFT

In the interest of continuing product improvement, the Developer reserves the right to make modifications and changes to floorplans, project design, materials and specifications. This is not an offering for sale. Any such offering can only be made by way of Disclosure Statement, E&OE, 2021.01.11

LEVEL 3-44

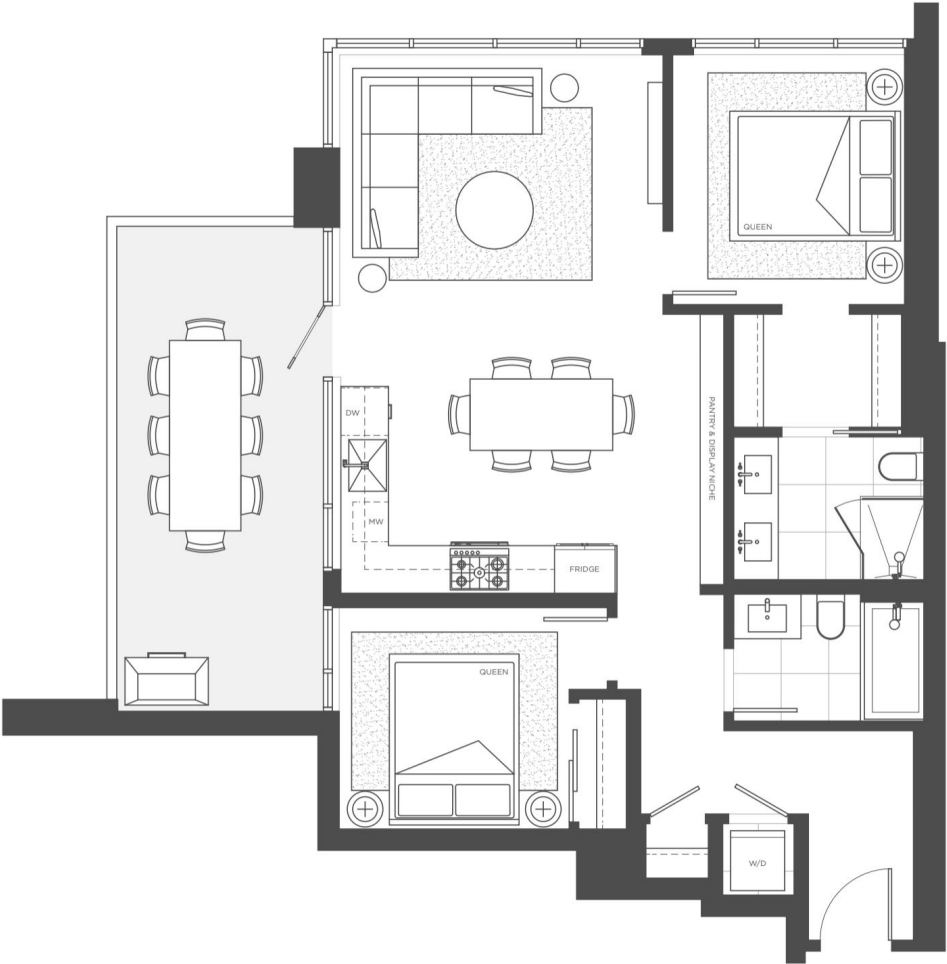


PLAN E

2 BED
2 BATH

Indoor living	908 sqft
Outdoor living	189 sqft
Total	1,097 sqft

SMITH & farrow



DRAFT

In the interest of continuing product improvement, the Developer reserves the right to make modifications and changes to floorplans, project design, materials and specifications. This is not an offering for sale. Any such offering can only be made by way of Disclosure Statement. E&OE. 2021.01.11

LEVEL 3-44

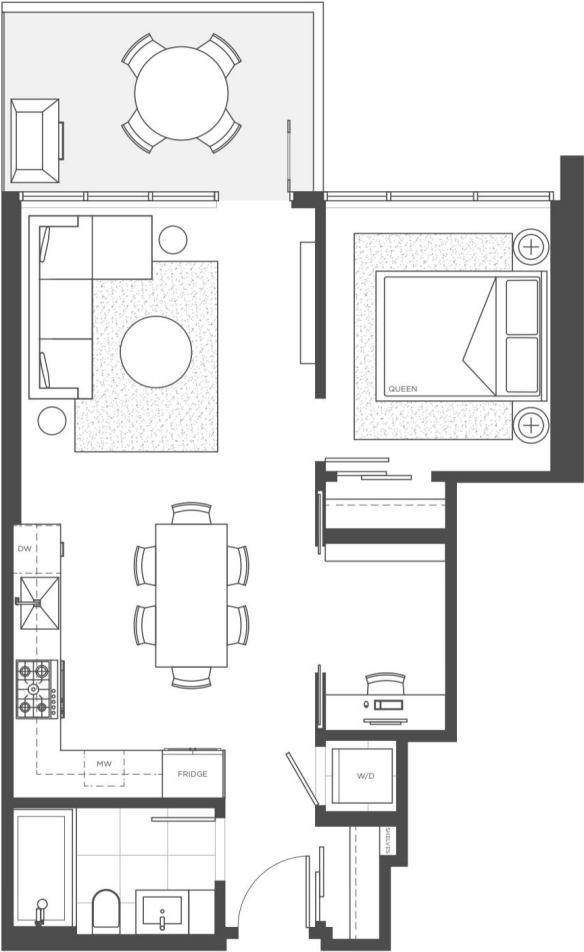


PLAN D

1 BED + DEN
1 BATH

Indoor living	650 sqft
Outdoor living	112 sqft
Total	762 sqft

SMITH *E* farrow



DRAFT

In the interest of continuing product improvement, the Developer reserves the right to make modifications and changes to floorplans, project design, materials and specifications.

LEVEL 3-44

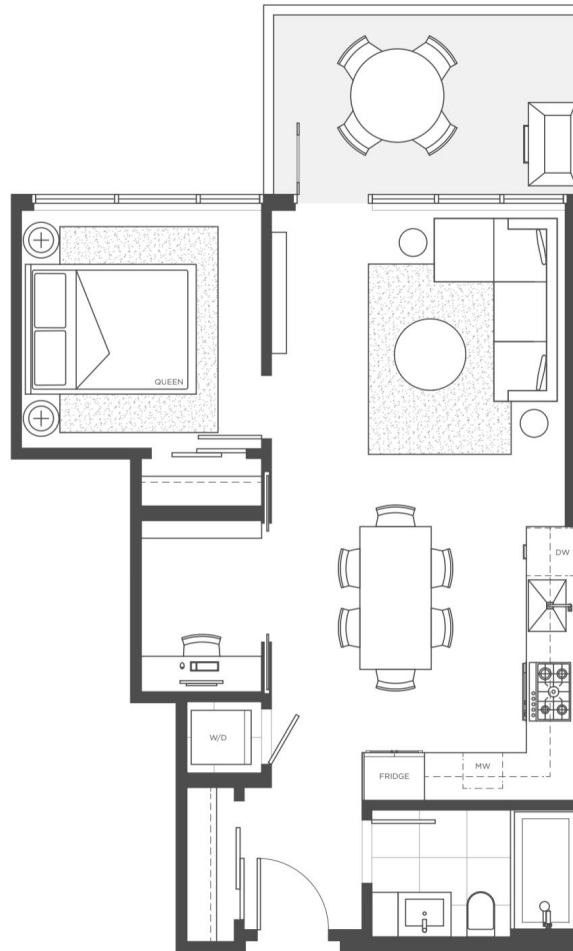


PLAN C

1 BED + DEN
1 BATH

Indoor living	644 sqft
Outdoor living	111 sqft
Total	755 sqft

SMITH & farrow



DRAFT

In the interest of continuing product improvement, the Developer reserves the right to make modifications and changes to floorplans, project design, materials and specifications. This is not an offering for sale. Any such offering can only be made by way of Disclosure Statement. E&OE, 2021.01.11

LEVEL 3-44

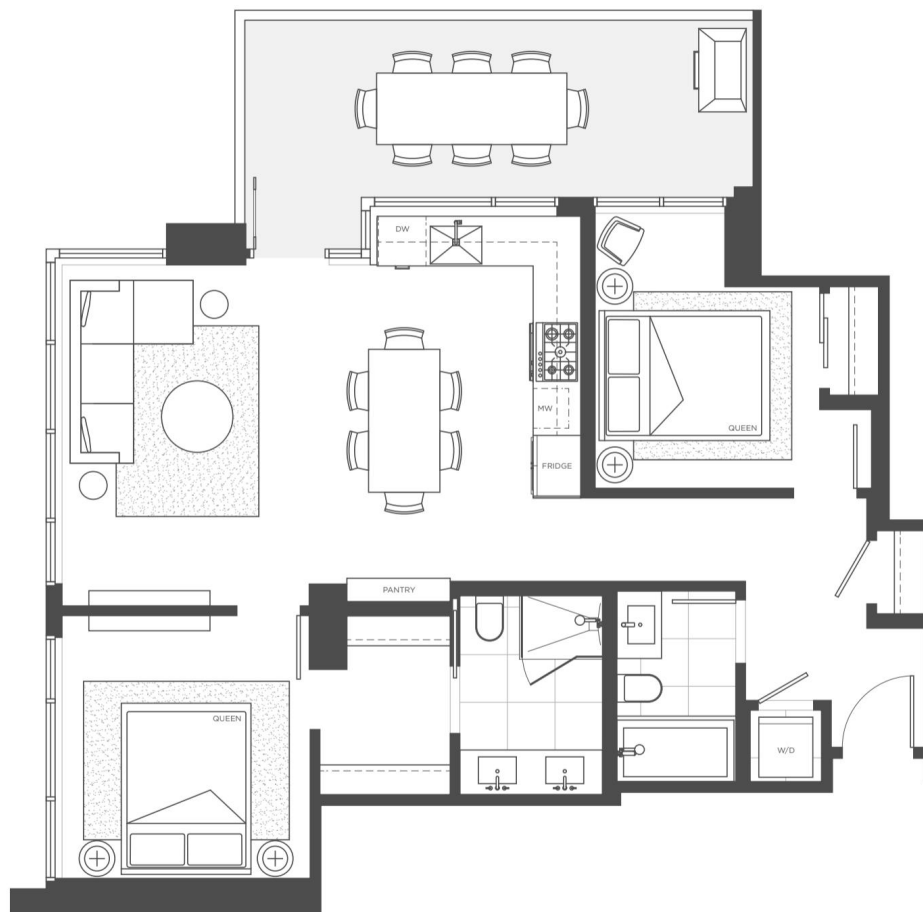


PLAN B

2 BED
2 BATH

Indoor living 914 sqft
Outdoor living 187 sqft
Total 1,101 sqft

SMITH & farrow



LEVEL 3-44



DRAFT

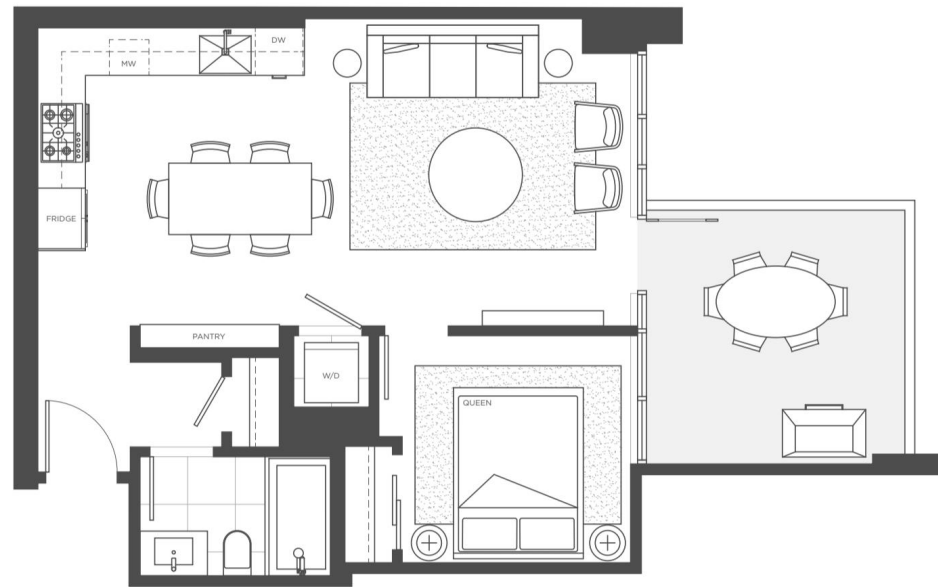
In the interest of continuing product improvement, the Developer reserves the right to make modifications and changes to floorplans, project design, materials and specifications. This is not an offering for sale. Any such offering can only be made by way of Disclosure Statement. E&OE. 2021.01.11

PLAN A

1 BED
1 BATH

Indoor living 614 sqft
Outdoor living 124 sqft
Total 738 sqft

SMITH & farrow



DRAFT

In the interest of continuing product improvement, the Developer reserves the right to make modifications and changes to floorplans, project design, materials and specifications. This is not an offering for sale. Any such offering can only be made by way of Disclosure Statement. E&OE, 2021.01.11

LEVEL 3-44

